

Product datasheet for **RC227400**

OTUD1 (NM_001145373) Human Tagged ORF Clone

Product data:

Product Type:	Expression Plasmids
Product Name:	OTUD1 (NM_001145373) Human Tagged ORF Clone
Tag:	Myc-DDK
Symbol:	OTUD1
Synonyms:	DUBA7; OTDC1
Mammalian Cell Selection:	Neomycin
Vector:	pCMV6-Entry (PS100001)
E. coli Selection:	Kanamycin (25 ug/mL)



[View online »](#)

ORF Nucleotide Sequence:

>RC227400 representing NM_001145373
 Red=Cloning site Blue=ORF Green=Tags(s)

CTATAGGGCGGCCGGGAATTCGTCTGACTGGATCCGGTACCGAGGAGATCTGCCGCCGCGATCGCCGGCGC
 GCC

ATGCAGCTCTACAGCAGCGTCTGCACCCACTACCCCGCCGGGCCCGGGTCCCACGGCCGCGCCCGCCCG
 CGCCACCCGCGCGCTACCCCTTCAAGGTCTGCTGACGCCCGGGAGCCGCGCGCGCCGCGCCGA
 GCCGAGACCGGTGAGTGCCAGCCCGCCGCGGCCGAGCACCAGGAAGCCGCGCTGTCCCGCGCCG
 AAGATGCCCGCTTCTCCTCTGCTTCCGAGGTGGTGTCCGGGGCCGCGCGCCGCGCTCCGCCGCGCCG
 GCCCGCCCGCGCGTCTGCAAGCCGCGCTGCCCGCGACTACACGTCCACCGCACAGATCACCGTGGC
 GGCCCTGGGGCCGACAGGCTCTGCTGCACGGGCCGATCCCGTTCCCGCGCGCGGGCTCCGCCGCT
 GCCCGCGCGCGCTGCCTCTGCTCGCCCGCGCCGCGAGCCCGGTCCCGCGCGCGGGGCTCT
 CGGCTGGCTCTGGAGGAGCTGCTGCGCCCGACTGCCCGAGCCCGGGCTTGACGCGACACGGGA
 GGGGCCGATCGAACTCCGACTGAGCGAGCACGCCAGGCCCTGGCCCGCCCAAGCACCGAGGCCCC
 GCGGCGACCCCGGGAGCCCGATCCCGCCCGCGTCCGTGGGGCGAAGAGCACTTGGCGGAGAGGGGCC
 CCAGGGGCTGGGAGAGGGGCGCGATCGTGCACGCGCCCGGTGGGGACGCGGCGCGGAGGCCGACCC
 AGAGGCCGAGGCACCCCGCGGGGAGCATCGAGGCCCGCCGAGTAGTGCGGCGAGCCGGTATCGTC
 TCCAGGTCCGATCCAGAGACGAGAAGCTGGCCCTATACCTGGCCGAGGTGGAGAAGCAGGACAAGTATC
 TGCGGCAGAGGAATAAGTACCGATTCCACATCATTCCAGACGGCAACTGCCTCTACCGAGCTGTACGAA
 GACGGTGTATGGGACCAGACCTGCACCGGGAGTTGAGGGAGCAGACGGTGCATACATCGCCGACCAT
 CTCGACCACTCAGCCCCCTGATTGAGGGCGACGTGGGGAGTTTATCATCGTGTGCCAAGACGGGG
 CATGGGCCGGGTACCCGAGTTGCTGGCCATGGGGCAGATGCTGAATGTGAATATCCATTTAACTACTGG
 AGGGAGGCTGGAGAGTCCACGGTGTCTACCATGATTATTATTGGGCCAGAGGATCCCTGAGGCT
 AGTATTTGGCTCAGTTGGCTCAGTAACGACACTATGATGCTGTATTTGATCACTCCTATCCTAACCCAG
 AGTACGACAACTGGTCAAAACAACTCAAGTGCAAAGAAACGCGACGAAGAAGTTCGCAATCTATGGC
 CATATCTTGTCTAAAATGTATATTGAACAAAATGCATGCTCT

ACGGTACGCGGCCGCTCGAGCAGAACTCATCTCAGAAGAGGATCTGGCAGCAATGATATCCTGGATT
 ACAAGGATGACGACGATAAGGTTTAA

Protein Sequence:

>RC227400 representing NM_001145373
 Red=Cloning site Green=Tags(s)

MQLYSSVCTHYPAGAPGPTAAAPAPPAATPFKVSLQPPGAAGAAPEPETGECQPAAAAEHREAAVPA
 KMPAFSSCFEVVSGAAAPASAAAGPPGASCKPPLPHYTSTAQITVRALGADRLLLHGPDPVPGAAGSAA
 APRGRCLLLAPAAPVPPRRGSSAWLLEELLRPDCPEPAGLDATREGPDRNFRLSEHRQALAAAKHRGP
 AATPGSPDPGPGWGEHLAERGRGWERGGDRCDAPGGDAARRPDPEAEAPPAGSIEAAPSSAAEPVIV
 SRSDPRDEKLALYLAIEVEKQDKYLRQRNKYRFHIIPDGNCLYRAVSKTVYGDQSLHRELREQTVHYIADH
 LDHFSPLIEGDVGEFIIAAAQDGAWAGYPELLAMQMLNVNIHLTTGGRLESPTVSTMIHYLGPEDSLRP
 SIWLSWLSNGHYDAVFDHSYPNPEYDNWCKQTQVQRKRDEELAKSMAISLSKMYIEQNACS

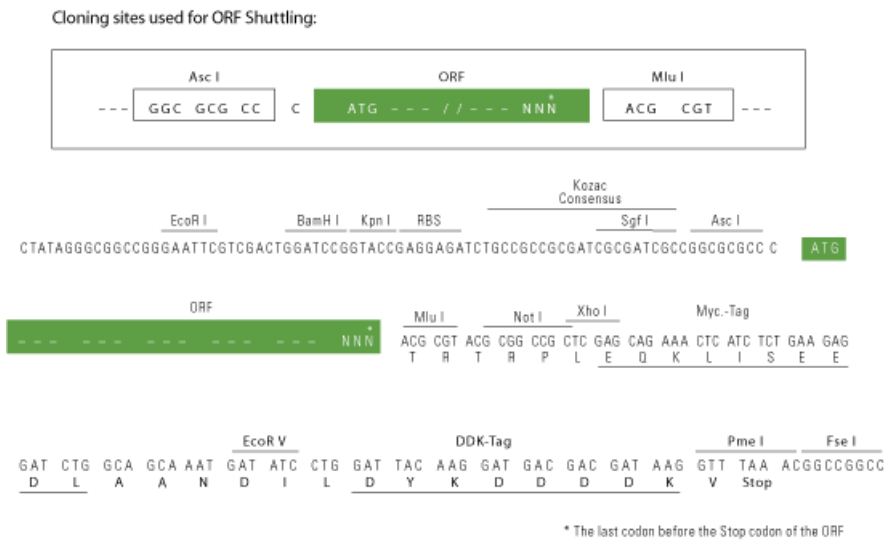
TRTRPLEQKLISEEDLAANDILDYKDDDDKV

Chromatograms:

https://cdn.origene.com/chromatograms/mk8034_h08.zip

Restriction Sites:

Ascl-MluI

Cloning Scheme:


ACCN: NM_001145373

ORF Size: 1443 bp

OTI Disclaimer: Due to the inherent nature of this plasmid, standard methods to replicate additional amounts of DNA in E. coli are highly likely to result in mutations and/or rearrangements. Therefore, OriGene does not guarantee the capability to replicate this plasmid DNA. Additional amounts of DNA can be purchased from OriGene with batch-specific, full-sequence verification at a reduced cost. Please contact our customer care team at custsupport@origene.com or by calling 301.340.3188 option 3 for pricing and delivery.

The molecular sequence of this clone aligns with the gene accession number as a point of reference only. However, individual transcript sequences of the same gene can differ through naturally occurring variations (e.g. polymorphisms), each with its own valid existence. This clone is substantially in agreement with the reference, but a complete review of all prevailing variants is recommended prior to use. [More info](#)

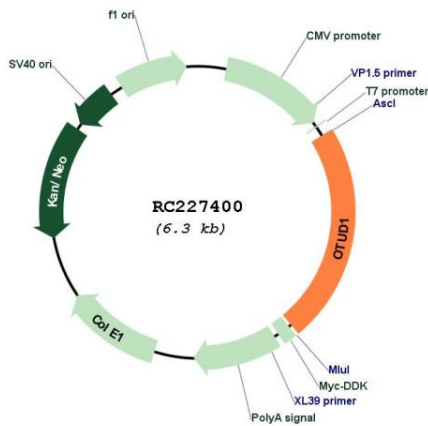
OTI Annotation: This clone was engineered to express the complete ORF with an expression tag. Expression varies depending on the nature of the gene.

Components: The ORF clone is ion-exchange column purified and shipped in a 2D barcoded Matrix tube containing 10ug of transfection-ready, dried plasmid DNA (reconstitute with 100 ul of water).

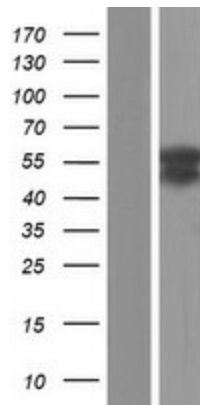
- Reconstitution Method:**
1. Centrifuge at 5,000xg for 5min.
 2. Carefully open the tube and add 100ul of sterile water to dissolve the DNA.
 3. Close the tube and incubate for 10 minutes at room temperature.
 4. Briefly vortex the tube and then do a quick spin (less than 5000xg) to concentrate the liquid at the bottom.
 5. Store the suspended plasmid at -20°C. The DNA is stable for at least one year from date of shipping when stored at -20°C.

RefSeq:	NM_001145373.3
RefSeq ORF:	1446 bp
Locus ID:	220213
UniProt ID:	Q5VV17
Cytogenetics:	10p12.2
MW:	50.9 kDa
Gene Summary:	Deubiquitinating enzymes (DUBs; see MIM 603478) are proteases that specifically cleave ubiquitin (MIM 191339) linkages, negating the action of ubiquitin ligases. DUBA7 belongs to a DUB subfamily characterized by an ovarian tumor (OTU) domain.[supplied by OMIM, May 2008]

Product images:



Circular map for RC227400



Western blot validation of overexpression lysate (Cat# [LY428852]) using anti-DDK antibody (Cat# [TA50011-100]). Left: Cell lysates from untransfected HEK293T cells; Right: Cell lysates from HEK293T cells transfected with RC227400 using transfection reagent MegaTran 2.0 (Cat# [TT210002]).