

## Product datasheet for **RC227399**

### **RBMXL3 (NM\_001145346) Human Tagged ORF Clone**

#### Product data:

Product Type:	Expression Plasmids
Product Name:	RBMXL3 (NM_001145346) Human Tagged ORF Clone
Tag:	Myc-DDK
Symbol:	RBMXL3
Synonyms:	CXorf55
Mammalian Cell Selection:	Neomycin
Vector:	pCMV6-Entry (PS100001)
E. coli Selection:	Kanamycin (25 ug/mL)
ORF Nucleotide Sequence:	>RC227399 ORF sequence, <b>codon optimized</b> . Due to the complexity of NM_001145346, the ORF clone is codon optimized for mammalian Expression. The nucleotide sequence differs from the reference sequence, yet the amino acid sequence remains identical.

Red=Cloning site Blue=ORF Green=Tags(s)

TTTTGTAATACGACTCACTATAGGGCGGCCGGAATTCGTCGACTGGATCCGGTACCGAGGAGATCTGCC  
GCC**CGATCGCC**

ATGATGGAGGCTGATAGACCAGAGAAGCTGTTCATTGGGGCCTCAATTTGAAAACCGATGAAAAGGCGC  
TGAAGGCTGAGTTCGGCAAGTATGGGCACATCATCAAGGTTTTTTTATGAAAGGATCGGAAGACGAACAA  
GTCCCAGGCTTTGCCTTCGTACATTTGAGAGCCCCGACAGCGCAAAGGCCGCTGCGCGGGATATGAAC  
GGCAAGTATCTCGATGGTAAAGCGATCATGGTGGCCAGACCAATAAGCCAGCCTTCAAGAGTTCCTCGCT  
GGTGCCCTCAACCCAGGGTCAGGCTCTCGGTCTAGATTTTCCCATAGAACCCGAGGAGGGGTAGTTC  
ACCCCAACGGCCCCCTTCCCAGGGCCGACCCGATGACGGCCGGGATATGCCGGTATTTTCGACCTGTGG  
CCCTACCGAGCTCCCATGCCAAGGAAAAGAGGACCACCCCGCCATTGGGCAAGCCCCCACAAAC  
GGGTACACCAAGTTCCTGGCAGCTCAGTGGGATGTGGTATGAGAGGAAAGGCTCCAACCGTGTGAGG  
GCAAGATGGCTATTCTGGTCTGCAGCCAGACGGTGGGCTGGCCCCACATAAGAGAGCGGTGCCACGC  
TCCTCCCTCGCCAGAATCGGAGGCTCAGGGATGCCCGCAAGGCCAGCCGTGTGGGGCAAGATGGGT  
ACTCTGGTCCACGGGTCAGAGAGCCTCTCCCTCCATGTAGGGATCCTGGAGATTTTGTCCCGGCACTCCG  
GGATTACAGTCGCGCTATTATGGGCATTCTAGCGTTCCTGACTACCGACCGCTGCGGGGCGACGGCAAT  
CAGAATGGATATAGGGGGCGGACCACGAATACACCGACCCCTCCAAGGGCAGTTACCGCGAGCCTC  
TTAAGTCTACGGTGGCCCTGTGGCGTCTCCTGTGTGGGCACTCCACCTCATATGGGGTGGCTG  
TAGGTATGAAGAGTACCGGCAATCCCCGACGCTGTAGTGAGGGCCGACGAGCGAGGCTCTCCCG  
GTCGTCCTCCCCGACGCTACAGTCGGGACCATTACCTAAGGCGTACAGTGGCGGCAAGTCTTCATCCA



[View online »](#)

GTAAACGGTTATTCTCGGAGTGATAGATATGGGGAAGAGGGTTGTTATGAAGAATACCGAGGCAGAAGTCC  
TGACGCCACAGTGGCGGTGGAAACAGCTCCAGCAATAGTTACGGACAGTCTCATCATTACGGTGGAGAA  
GGGCGGTATGAAGAATACAGAGGACGGAGCCATGAGGCACGCTCAGTGGCCGGTCAACAGACGCCCACT  
CTCGAGGTCGCTCAGACGATGCTTACAGTGGTGGACACGACTCATCTCATGGTCCGATTGCTGCGGGG  
AGGCGGCCGCTACGAGGAGTACCAGGGAAGTCTTTGGACGAAATTCAGGCGGTGTTCCCGGAGGCC  
TACTCCGAGGGCAGACAACCTCCAGCTGGAGCGACCGGTATGGCGTTGGTGGTCACTATGAGGAGAATC  
GCGGGCATTCTCTTGATGCAAAATAGTGGGGGGCGGAGTCCAGACACCCACTCCGGCGGACACAGCTCATC  
ATCCAACAGCTATGGCCAGTCCCACCGCTATGGAGGGGAGGGTAGATATGAGTACAGGGGGCGCTCACAC  
GACGCACACAGTGGAGGTTGTTCTGCAGACGCATACAGCGGGGGACATGACTCATCATCCCAGTCCAATA  
GGTACGGCGGAGGGGTTGCTACGAGGAATACAGGGGGAGGTCTTTGGATGCCAATTCAGGCGGGAGATC  
TCCTAACGCCTATTCCGGAGGACACGATAGCTCAAGCTGGAGCCACCGCTACGGGGCGGGGGAGATAT  
GAAGAGTACAGAGGACGGTCCCTGGATGCAAAATCTGGAGGACGGTCCCAGACGCCTACAGCGGAGGGC  
ACGATAGCTCTGGGCAGTCCAATGCTATGGCGGGGTGGCAGATACGAAGAATATCGAGGGAGGCTTCT  
GGACGCAAACCTCCGGCGGAAGGAGTCCGGATGCGTATTACGGGGTCCAGATTCCAGCAGTCAAAGCAAC  
CGATATGGCGGGCGGGACGGTACGAGGAATACCAGGTCCTCCCTCGACGCAAACCTCAGCGGAAGGA  
GCCTGACACCTATAGCCGGGGGATGATTCTAGCTCTCAGAGCGACCACTATGGGGGAGGCGGAAGATC  
TCTCGATGCTAACTCATCAGGAAGATTGCCGACGCATATAGCGCGGTATGACAGCTTCTCTCGATCA  
CACCGCTATGGCGGGCGGGCCGCTATGAGGAATACAGAGGACGAAGTCTCGACGCAAACCTGCGGGAC  
GGTCACTAATGCCTACAGTGGCGGCCACAACCTAGCTCCCAGAACGATCCTTGAGAGGGCGGGCGAG  
ATATGAAGAGAACCGGGTCACTCACTGGATGCCAATCTGGAGGCCACAGCCCCAACGCCTACTCTGGC  
GGGCGGGATTCAAGCTCTAATTCCTACGACCGGAGCCATCGGTACGGTGGAGGCGGGCACTATGAGGAGT  
ATAGAGGCCGATCCCATGACACTCACTCAGAGTCTGCTCTCCGACGCTCATTCTGGCGACCATTACAC  
CGAGGCTTATTCAAGAGCCGAGACAGTTCAGTAATTCCTACGGTAGATCAGATCATTACGGGAGAGGT  
GGTTGCTACGAAGAGTATCAGGGCCGAAGTCTAACGCTTACGGGGGGGACGGGGCCTGAACTCTTCCA  
ATAATTCTCATGGCGATCCCATAGATATGGCGGGGGGGCAGATACGAAGAGTATAGAGGACCTTCCCC  
TGACGCCCATTCAGGCGGACGGGACAGCTCAATTAATCCTACGGCTGTCTGACAGATACGGAGGCGGG  
GGGCACTATGAAGAATACCAGGGTTCCTCCAGATGCCTATAGTGGCGACCATGACAGTCCAGCAATT  
CTTACGGAAGGTCTGACCGTACTCTCGGGGGCGGACCGGGTCCGACGGCCGACCGGGGCTGCCTTT  
GCCTATGGAACAGGAAGCCACCCTGCATGACTCTTATTCCCGATCCGGCTGCCGGTCCACGGGGC  
GGCGGCCCCAGGAGGCGCTTTGAAAGGGGCGAGGGGCGCTCACGCTAC

ACGCGTACGCGGCCGCTCGAGCAGAACTCATCTCAGAAGAGGATCTGGCAGCAAATGATATCCTGGATT  
ACAAGGATGACGACGATAAGGTTTAA

**Protein Sequence:** >RC227399 representing NM\_001145346  
 Red=Cloning site Green=Tags(s)

```
MMEADRPEKLFIGGLNLKTDEKALKAIEFGKYGHIKIVFLMKDRKTNKSRGFVFTFESPADAKAAARDMN
GKYLDGKAIMVAQTIKPAFKSSRWVPTPGSGSRSRF SHRTRGGGSSPQRPPSQGRPDDGRGYAGYFDLW
PYRAMPKRKRPPPRHWASPPHKRATPSSLAHSVGCGRGKAPT VSGQDGYSLQPRRWAGPPHKRAVPR
SSLARIGGSGMPGKAPAVWGQDGYSGPRVREPLPPCRDPGDFVPALRDYSRRYYGHSSVPDYRPLRGDGN
QNGYRGRDHEYTDHPSKGSYREPLKSYGGPCGAAPVWGT PPSYGGGCRYEYEQGNSPDACSEGRSSEALP
VVL PDAYS RDHSPKAYS GGRSSSSNGYSRSDRYGEEGCYEEYRGRSPDAHSGGRNSSNSYQSHHYGGE
GRYEEYRGRSHEARSGGRSTDAHSRGRSDDAYSGGHDSSSWSDCCGGGGRYEEYQGRSLDANSGGCSPEA
YSGGHDNSWSDRYGVGGHYEENRGHSLDANSGGRSPDTHSGGHSNSNSYQSHRYGGEGRYEYRGRSH
DAHSGGCSADAYSGGHDSSSQSNRYGGGGCYEEYRGRSLDANSGGRSPNAYSGGHDSSSWSHRYGGGGRY
EEYRGRSLDANSGGRSPDAYSGGHDSSGQSNCYGGGGRYEEYRGRLLDANSGGRSPDAYSGGHDSSSQSN
RYGGGGRYEEYRGHSLDANSGGRSPDYSRGHDSQSQSDHYGGGGRSLDANSSGRLPDAYSGGHDSSRS
HRYGGGGRYEEYRGRSLDANSGGRSPNAYSGGHNSSRNDPCRGGGRYEEENRGHSLDANSGHSPNAYSG
GRDSSNSYDRSHRYGGGGHYEEYRGRSHDTHSRGRSPDAHSGDHYTEAYSRGRDSSFNSYGRSDHYGRG
GCYEEYQGRSPNAYGGGRGLNSSNNSHGRSHRYGGGGRYEEYRGPSPDAHSGGRDSSIKSYGLSDRYGGG
GHYEEYQGLSPDAYSGDHRSSNSYGRSDRYSRGRDRVGRPDRGLPLMETGSPPLHDSYSRSGCRVPRG
GGRQGGRFEREGERSRY
```

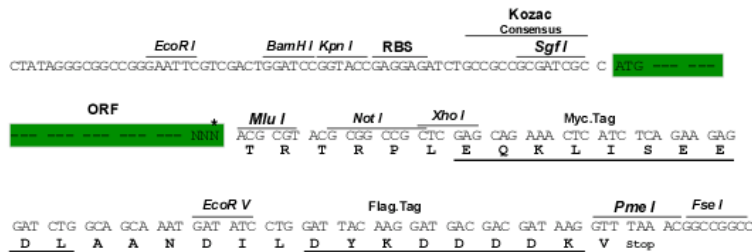
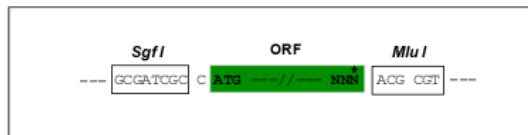
TRTRPLEQKLI SEEDLAANDILDYKDDDDKV

**Restriction Sites:**

SgfI-MluI

**Cloning Scheme:**

Cloning sites used for ORF Shuttling:



\* The last codon before the Stop codon of the ORF

**ACCN:** NM\_001145346

**ORF Size:** 3201 bp

**OTI Disclaimer:** The molecular sequence of this clone aligns with the gene accession number as a point of reference only. However, individual transcript sequences of the same gene can differ through naturally occurring variations (e.g. polymorphisms), each with its own valid existence. This clone is substantially in agreement with the reference, but a complete review of all prevailing variants is recommended prior to use. [More info](#)

**OTI Annotation:** This clone was engineered to express the complete ORF with an expression tag. Expression varies depending on the nature of the gene.

**Components:** The ORF clone is ion-exchange column purified and shipped in a 2D barcoded Matrix tube containing 10ug of transfection-ready, dried plasmid DNA (reconstitute with 100 ul of water).

**Reconstitution Method:**

1. Centrifuge at 5,000xg for 5min.
2. Carefully open the tube and add 100ul of sterile water to dissolve the DNA.
3. Close the tube and incubate for 10 minutes at room temperature.
4. Briefly vortex the tube and then do a quick spin (less than 5000xg) to concentrate the liquid at the bottom.
5. Store the suspended plasmid at -20°C. The DNA is stable for at least one year from date of shipping when stored at -20°C.

**RefSeq:** [NM\\_001145346.1](#), [NP\\_001138818.1](#)

**RefSeq Size:** 3469 bp

**RefSeq ORF:** 3204 bp

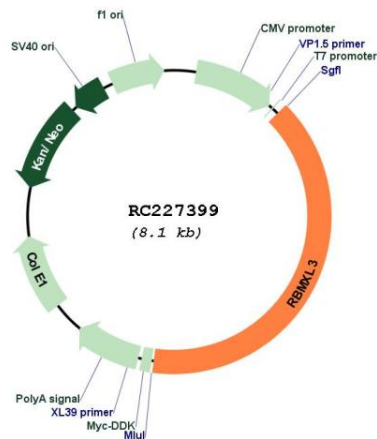
**Locus ID:** 139804

**UniProt ID:** [Q8N7X1](#)

**Cytogenetics:** Xq23

**MW:** 114.9 kDa

**Product images:**



Circular map for RC227399