

Product datasheet for RC227396

Protocadherin 23 (DCHS2) (NM_001142552) Human Tagged ORF Clone

Product data:

Product Type:	Expression Plasmids
Product Name:	Protocadherin 23 (DCHS2) (NM_001142552) Human Tagged ORF Clone
Tag:	Myc-DDK
Symbol:	DCHS2
Synonyms:	CDH27; CDHJ; CDHR7; PCDH23; PCDHJ
Vector:	pCMV6-Entry (PS100001)
E. coli Selection:	Kanamycin (25 ug/mL)
Cell Selection:	Neomycin
ORF Nucleotide Sequence:	>RC227396 representing NM_001142552 Red=Cloning site Blue=ORF Green=Tags(s)

TTTTGTAATACGACTCACTATAGGGCGGCCGGAATTCGTCGACTGGATCCGGTACCGAGGAGATCTGCC
GCCCGATCGCC

ATGAGCCCTTGTGGCGGAAGATGGGCGAAGGGCGTCAGCAGCGGGCTCCGGTCCGGAAGCTCCTTC
TGCTCCCCGGGAGGAGAGATACACCCATGGGCGGTGAGCAGCAGCGGCCAGGACGCAGCGCTCCCT
GCTCTGGCTCTTGGTGCACGTGTGGCTGTGGGCGGCTCGGGCTCCTCTGCCAGTTGTCAACCTCACC
CTTCCGTAGATGAGGGCTTCCCCGGACACGCTGGTAGGTGACATCCGCGCCGGGCTGCCGGCCGCGC
AGCAGCAGGAGGGGAGCGGCTTCTTCTGTGCGAGGACTCCGATGACTCCCCGCTGCTGGACGACTTCCA
CGTGCACCCGGACACCGGCATCATCCGACTGCGCGGCGCTGGACCGGAGCGGGGACCCTACAGC
TTCGTCGCGCCACGCTGCTGGGCGCTGTGGTGCAGGTGGAGATTCGCGTCAACGACGTGAATGACCACT
CGCCCCGCTTCCCCTCGACTCCCTGCAACTCGACGTCTCCGAGCTCAGCCCGCCAGGGACCGCCTCCG
CCTGCCAGTTGCCACGATCCGGACCGCGACTGTTGAGCACTCAGGGCTACACCCTGGTGAACCGTCC
GACCTGCCAAGGACCCCGCAGGCCGTTCTTCCAGTTGCGCTACCGACTCCGGGGCCACTACCGTAC
CGTTTTTCCAGGCTCCTCGTCAACCCTGGAGCCTTAGATCTGGTGTGCTGCGGCGCTTGGACCGAGA
GGAGCGCGGCGCACCGGCTGCAGATCGAGGCATGGGACGGCGGCCACCCCGGCGCACCGGCCTCCTG
AGCGTGGAGCTGCGCGTCTGGATGAGAACGACAACCCGCGGCTTTGAGCAGGACGAGTACCGCGCCG
CGGTGCGCGAGGACGCCAGCCGGGCGCCGAGGTCTGTCGCGTGCAGCCACCGCGACCTGGGGCC
CAATGGCTTCGTGCGCTACAGCCTCCGCGCCCGCAAGTGCCTGGGGCGGTAAGCGCGCGGGGACTG
GGCAGCGCGGCTACTTCGCGGTGGAGGAGCTGAGCGGCGTGGTGCAGTGTGGAGACCTCTGGACCGG
AGGCACAGGCTGGCACCAGTTGGTGGTGGAGGCCGCGATGGAGGCGCCGAGCCTGAGGTTGCCACGCT
GCGCGTGTCCATCGCGTCTGGACGTGAATGACAACCGGCCAGCAATTCAGTGTCTTTCTCACAGAG
GGAGGCGTCCCGTGTCTCTGAAGGCGCCGACCGGGCGACTACGTGGCTCGCGTCTCGGTGTCTGACG
CGGACGCTGACTGGGAGAAGGAAGATGAGGCCACAGGGGAGCTTGGTGTGGGTCTTGAGACGGGAGCAT
CTCTGTCTTGAAGGCGGAGAGGGAGACTTCGCGTGTCTACCGGGCGGCCCCAGGGGATTTTTTC
CTTTGCGTGGAGGGGCCCTGGACAGAGAGAGCCGATCTGTATGAGTTACTACTGGTGGCCACGGACG



[View online »](#)

CGGGGTCCCCGCGCTGAGCACGGAGGAGACGCTGCTACTCCGGGTGCGTGACCTCAATGACCAACCACC
TCTCTTAGCCAAACAGCATTACAAGGCCTCAGTGTCCGAGGCCGCGGCCCTGGCACTGTAGTCATGTGG
GTCAGCGCCTCCGATGCCGACGAGGCGAGGCAGTGATCACGCCCTGGCTGCGCTACACTGTAGTCCAACCTCT
CGGCTCCCTGCAATCTCGGCTCCCTGCAATCAAAGATGGTCCACACCCGACAGGTGGGACCATCTTTTGC
CATTGATCCGAAAGCGGTGCGATCAGCACTATCCGGACTCTAGACCGAGAGGTCCAGGAGGCGGTGGAG
ATGATGTGAATGACAATGAGCCCATCTTCTGGAGGCAGGTGACAATGCCACCATTGCAGAGCATGCCCC
GGTTGGCACTGCTTTCTGCAGGTGACAGCCTCTGATGCAGATTAGGACTCTATGGCTTTATTGAATAT
TCTCTTTATGATGGATTCTGAGCTATGAAGCACCTCAGGCATTCCGGATCGACCCTCATGATGGGCAAA
TCTGTGTTTCTCAAGATATCGACAGGAAAGGGATCCAGCTACCTATGATCTCCTGGTGGAGCTAAGGA
TGGGGGTGGGCTAAGTGCCCAAGCCTTTGTTCTGTGGACCTGGAGGACGTGAATGATAATCATCTGTG
TTAAACCCATCAACCTATGTGACGAGCATCAGTGTGAGACCCAGCCAGGCACCGAGATCATCAATGTTT
TTGCCACTGACCAGGACTCTGGGATATATGGGACAGTGGCTTATGAGCTTATTCCAGGAAACGTGTCGTC
CCTTTTTACCATTGACTCCACCACAGGAATTTTACTTAACATTACCTCTTAGTCATTTGGAATCTACC
ACACTTTGCTTGTGTTCTGTCTCAAGACGGTGGTGGGCTCACAGCTGCATTAATGCCGATGTCACCA
TACACATTTTCCAGACAACCTCTGGCACCTGCTGAGTTTGAAGGCCTAAGTACACTTTCTTAGTTTATGA
AGATGTGCTGAAGATAGTCCCATTGGAACAGTGAAGCAAGAGAGCCCTTGAACCTCAGAACCAATC
TTTTACAGGATTTCTTCTGGTGTCTCGGCGGAAAGTTCTCCATTACCCGCGGCTGGGCACTATTGCGA
CCCAGGAGCCCTGGATCACGAGACGCAGCCCGTGGTGTGCTCACGGTGCAGGCCGAGCTCGGCAGCGC
CCCAGCCTGCAGCAGCACCGAGGTCAACATAACAGTCAATGGATGTCAATGACAACCCAGCGTTCCTC
AGGACCTCGGATGAGATTAGAATATCCCAGACCAGCCCCCTGGCACAGCCTGTACCTCGCACGTGCGG
AAGACAGAGACAGTGGGCGGAACGGACTCATCCGGTACTCCATCGCCAGCCCGAGCCAGGCGTCTTTGC
CATCGACAGAGCCCTGGGGTGTCTTCTCAACGGCAGCCTGGGCGCGGCGAGCAGCGGGAGCTCACG
CTGACTCTCAGGCGGAGGACCAAGGCCTGATCCTCAGGCAGCCCTGCTGGTGTGACAGTCGTTATCG
AGAAACGCGAACACAGCCATCCTGGACTTTTGAACATTTGGTCTATCAAGTGGAAGTCAGTGAAGTCTCT
CTCACCGATGACACAAATGCTGCAAAACACAGGCGCACCCACTTGGCCCCAGCGTGCAGCCTCGCCTCTT
AGGTAAGTGTGGAACCCAGCGTAGACTCTGCTATGTTTGGAAATCCGCCCTTACACGGGCTGGATTTATT
TGCGGCGACAGTTTACTATGAATCCACCCAAACATAAATTTAGAGTGTGTTGCTTGGATCCCCGAGGA
CGGATTTTGC AAAATGTGAGCACTACAGTCATTGTTCTGTCTGGGATGAGAATGACAATCCCCCACC
TTCTTGCATGATGTGTTGTTTTGAAAGTGAAGAGAGCCCTGTTCCCAAGGGTAATAGGCAAAATTA
CAGCTATTGACATGGACTCTGGAAGAATGGACAGCTATTATATTTCTTTTGTCTGATGGAATAATCTT
CAAGATGAATCCTAATACAGGAGAGTAAATCAATTGGGTGGCACTGGATCGTGAAGCAGCCGGGGCACCAT
GAGATGACTGTGCTAGTACAGACCGCGGCTCCCCACCACGAAACGCCACCATGGCGTTTACGTCTCAG
TACTGACATCAATGATAACAGGCCCTTCTCCCCAGTGTCTCCCTGGAAGGAGTTACAGTGAAGGT
TCTGGAAGGTCAACAGTAAATATGTTGGTTAAACTGTGTTGCAAAGGATCCTGATGAAGGAAATAAT
GCAGAAGTTACATACTCAGTATCTTCAGCTAGACCTATGCCTCTGAAGGGAAAAACAGCATTTGGGAAGC
AGTCGTGCAAAAAACAACAACAACAACAACAACAACAATCTTGACC

ACGCGTACGCGGCGCTCGAGCAGAACTCATCTCAGAAGAGGATCTGGCAGCAAATGATATCCTGGATT
ACAAGGATGACGACGATAAGGTTTAA

Protein Sequence: >RC227396 representing NM_001142552
 Red=Cloning site Green=Tags(s)

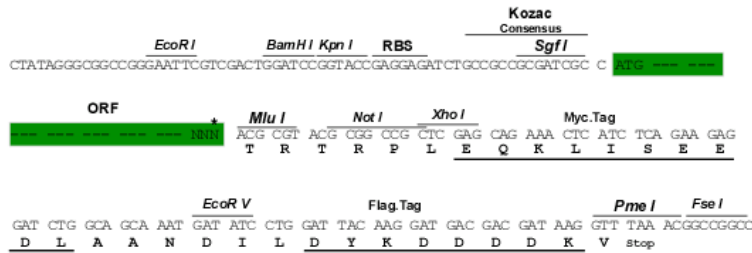
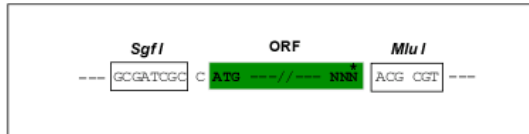
MSPCGRKMGEGRQRRAPVVGKLLLLPGRRDTPHGRSGSSGARTQRSLLWLLVHVWLWAASGSSAQLFNLT
 LSVDEGLPPDTLVGDIRAGLPAAQQQEGSGFFLSESDSDSPLDDDFHVHPDTGIIRTARRLDRRRDHYS
 FVAATLLGAVVQVEIRVNDVNDHSPRFLDSLQLDVSELSPPGTAFRLPVAHDPDAGLFSTQGYTLVQPS
 DLPKDPAGPFFQLRYRTPGPLPSPLPGSSSPLLEPLDLVLLRRLDREAAAHLQIEAWDGGRRPRRTGLL
 SVELRVLDENDNPPVFEQDEYRAAVREDAQPGAECVCRVRATDRDLGPNGFVRYSVRARQVPGAGSGGGAL
 GDAAYFAVEELSGVVRVWRPLDREAQAWHQLVVEARDGGAPEVATVRVSI AVL DVNDNRPAIHVLF L TE
 GGVARVSEGARPGDYVARVSVSDADGDWEKEDEATGELGVGLGDGSI SL SLEGGE GDFALLPGGPPGVFF
 LCVEGPLDRESRDLYELLLVATDAGSPLSTEETLLL RVADLNDQPPLFSQQHYKASVSEAAAPGTVVMW
 VSASDADEAGSDHAWLR YTVVQLSAPCNL GSLQSKMVHTAECGPSFAIDSESGAISTIRTL DREVQEAVE
 LKVV AQDLGEPPLSATCLV SITVDDVNDNEP I FWRQVYNATIAEHAPVGHCF LQVTASDADSGLYGFI EY
 SLYDGF LSYEAPQAFRIDPHDGQICVSQDIDRERDPATYDLLVEAKDGGGLSAQAFVRVLEEDVNDNHPV
 FNPSTYVTSISDETQPGTEIINVLATDQDSGIYGTVA YELIPGNVSSLFTIDSTTGIIYLTPLSHLEST
 TLSLMVSAQDGGGLTAVINADVTIHIFQTTLAPAEFERPKYTF L VYEDVPEDSPIGTVKAREPLNSSEPI
 FYRISSGDLGGKFSIHPRLGTIRTRKPLDHETQPVVVLTVQAQLGSAPACSSTEVNITVMDVNDNHPAFL
 RTSDEIRISQTTPPGTALYLARAEDRDSGRNGLIRYSIASPPGVFAIDRALGVLFLNGSLGAGEQRELT
 LTLRAEDQGVHPQAALLVLTV VIEKREHSPSWTFEHLVYQVEVSESLSPMTQMLQTQAHPLGPQRAASPL
 RYSLEPSVDSAMFGIRPYTGWIYLR RQFDYESTQTYNFRVFAWIPEDGFLQNVSTTVIVRVWDENDNSPT
 FLHDVLF LKVEESPVPQGVIGKITAIDMSGKNGQLLYL L SDGKFFKMPNPTGELINWVALDREHRGH
 EMTVLVTD RGSPPRNATMAVYVSVTDINDNRPF FPOCLPGKELHVKVLEGQPVNMLVTTVF AKDPDEGNN
 AEVTVSVSSARPMPLKGTAFGKQSCCKQTNKQTNKILT

TRTRPLEQKLISEEDLAANDILDYKDDDDKV

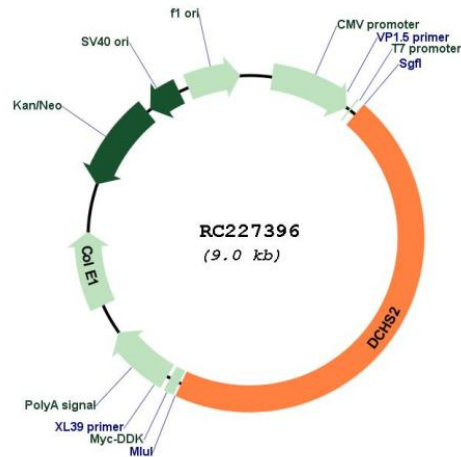
Restriction Sites:
Cloning Scheme:

SgfI-MluI

Cloning sites used for ORF Shuttling:



* The last codon before the Stop codon of the ORF

Plasmid Map:


ACCN: NM_001142552

ORF Size: 4107 bp

OTI Disclaimer: The molecular sequence of this clone aligns with the gene accession number as a point of reference only. However, individual transcript sequences of the same gene can differ through naturally occurring variations (e.g. polymorphisms), each with its own valid existence. This clone is substantially in agreement with the reference, but a complete review of all prevailing variants is recommended prior to use. [More info](#)

OTI Annotation: This clone was engineered to express the complete ORF with an expression tag. Expression varies depending on the nature of the gene.

Components: The ORF clone is ion-exchange column purified and shipped in a 2D barcoded Matrix tube containing 10ug of transfection-ready, dried plasmid DNA (reconstitute with 100 ul of water).

Reconstitution Method:

1. Centrifuge at 5,000xg for 5min.
2. Carefully open the tube and add 100ul of sterile water to dissolve the DNA.
3. Close the tube and incubate for 10 minutes at room temperature.
4. Briefly vortex the tube and then do a quick spin (less than 5000xg) to concentrate the liquid at the bottom.
5. Store the suspended plasmid at -20°C. The DNA is stable for at least one year from date of shipping when stored at -20°C.

RefSeq: [NM_001142552.2](#)

RefSeq ORF: 4110 bp

Locus ID: 54798

UniProt ID: [Q6V1P9](#)

Cytogenetics: 4q31.3

Protein Families: Druggable Genome, Transmembrane

MW: 149.1 kDa

Gene Summary: This gene encodes a large protein that contains many cadherin domains and likely functions in cell adhesion. Genome-wide association studies suggest that this gene may be important in Alzheimer's disease, compressive strength index, and appendicular lean mass. [provided by RefSeq, May 2017]