

Product datasheet for RC227394

SLC35C1 (NM_001145266) Human Tagged ORF Clone

Product data:

Product Type:	Expression Plasmids
Product Name:	SLC35C1 (NM_001145266) Human Tagged ORF Clone
Tag:	Myc-DDK
Symbol:	SLC35C1
Synonyms:	CDG2C; FUCT1
Mammalian Cell Selection:	Neomycin
Vector:	pCMV6-Entry (PS100001)
E. coli Selection:	Kanamycin (25 ug/mL)
ORF Nucleotide Sequence:	>RC227394 representing NM_001145266 Red=Cloning site Blue=ORF Green=Tags(s)

TTTTGTAATACGACTCACTATAGGGCGGCCGGAATTCGTCGACTGGATCCGGTACCGAGGAGATCTGCC
GCC**CGATCGCC**

ATGGCGCTGACCGGGCCCTCAGACCCCTCTGCAGAGGCAGAGGCCAACGGGGAGAAGCCCTTTCTGCTGC
GGGCATTGCAGATCGCGCTGGTGGTCTCCCTCTACTGGGTCACTCCATCTCCATGGTGTCTTAATAA
GTACCTGTGGACAGCCCTCCCTGCGGTGGACACCCCATCTTCGTCACCTTCTACCAGTGCCTGGTG
ACCACGCTGCTGTCAAAGGCCTCAGCGCTCTGGCCGCTGCTGCCCTGGTGCCGTGGACTTCCCCAGT
TGGCCTGGACCTCAGGGTGGCCCGCAGCGTCTGCCCTGTGCGTGGTCTTCATCGGCATGATCACCTT
CAATAACCTCTGCCTCAAGTACGTGCGTGGCCTTCTACAATGTGGGCCGCTCACTCACCACCGTCTTC
AACGTGCTGCTCTCTACCTGCTGCTCAAGCAGACCACCTCCTTCTATGCCCTGCTCACCTGCGGTATCA
TCATCGGGGGCTTCTGGCTTGGTGTGGACCAGGAGGGGGCAGAAGGCACCCCTGTGCTGGCTGGGCACCGT
CTTCGGCGTGTGGCTAGCCTCTGTGCTCGCTCAACGCCATCTACACCAGAAGGTGCTCCCGCGGGTG
GACGGCAGCATCTGGCGCTGACTTTCTACAACAACGTCAACGCCTGCATCCTCTTCTGCCCTGCTCC
TGCTGCTCGGGAGCTTCAGGCCCTGCGTGACTTTGCCAGCTGGGCAGTGCCCACTTCTGGGGATGAT
GACGCTGGGCGGCTGTTTGGCTTTGCCATCGGCTACGTGACAGGACTGCAGATCAAGTTCACCAGTCCG
CTGACCCACAATGTGTCGGGCACGGCCAAGCCCTGTGCCAGACAGTGTGGCCGCTCTACTACGAGG
AGACCAAGAGCTTCTCTGTTGGACGAGCAACATGATGGTGTGGCGGCTCCTCCGCTACACCTGGGT
CAGGGGCTGGGAGATGAAGAAGACTCCGGAGGAGCCAGCCCAAGACAGCGAGAAGAGCGCCATGGGG
GTG

ACGCGTACGCGGCCGCTCGAGCAGAACTCATCTCAGAAGAGGATCTGGCAGCAATGATATCCTGGATT
ACAAGGATGACGACGATAAGGTTAA



[View online »](#)

Protein Sequence: >RC227394 representing NM_001145266
Red=Cloning site Green=Tags(s)

MALTGASDPSAEAEANGEKPFLLRALQIALVVSLYWVTSISMVFLNKYLLDPSLRLDTPIFVTFYQCLV
 TTLLCKGLSALAACCPGAVDFPSLRLDLRVARSVLPLSVVFIGMITFNNLCLKYVGVAFYVNGRSLTTVF
 NVLLSYLLLKQTTSFYALLTCGIIIGGFWLVDQEGAETLSWLGTVFVGLASLVCVSLNAIYTTKVLPAV
 DGSIWRLTFYNNVNACILFLPLLLLLGELQALRDFACLGSAHFWMMLTGLGFGFAIGYVTGLQIKFTSP
 LTHNVSGTAKACAQTVLAVLYEETKSLFWWTSNMMVLGGSSAYTWVRGWEMKKTPEEPSPKDSEKSAMG
 V

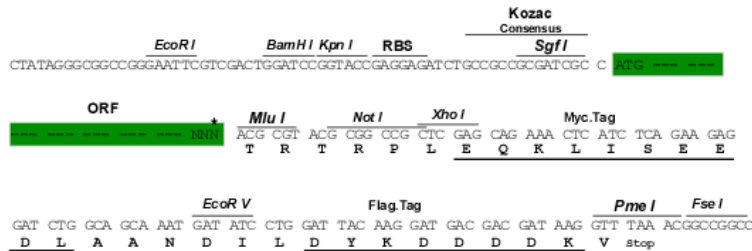
TRTRPLEQKLISEEDLAANDILDYKDDDDKV

Chromatograms: https://cdn.origene.com/chromatograms/ja1525_f02.zip

Restriction Sites: SgfI-MluI

Cloning Scheme:

Cloning sites used for ORF Shuttling:



* The last codon before the Stop codon of the ORF

ACCN: NM_001145266

ORF Size: 1053 bp

OTI Disclaimer: The molecular sequence of this clone aligns with the gene accession number as a point of reference only. However, individual transcript sequences of the same gene can differ through naturally occurring variations (e.g. polymorphisms), each with its own valid existence. This clone is substantially in agreement with the reference, but a complete review of all prevailing variants is recommended prior to use. [More info](#)

OTI Annotation: This clone was engineered to express the complete ORF with an expression tag. Expression varies depending on the nature of the gene.

Components: The ORF clone is ion-exchange column purified and shipped in a 2D barcoded Matrix tube containing 10ug of transfection-ready, dried plasmid DNA (reconstitute with 100 ul of water).

Reconstitution Method:

1. Centrifuge at 5,000xg for 5min.
2. Carefully open the tube and add 100ul of sterile water to dissolve the DNA.
3. Close the tube and incubate for 10 minutes at room temperature.
4. Briefly vortex the tube and then do a quick spin (less than 5000xg) to concentrate the liquid at the bottom.
5. Store the suspended plasmid at -20°C. The DNA is stable for at least one year from date of shipping when stored at -20°C.

RefSeq: [NM_001145266.1](#), [NP_001138738.1](#)

RefSeq Size: 3160 bp

RefSeq ORF: 1056 bp

Locus ID: 55343

UniProt ID: [Q96A29](#)

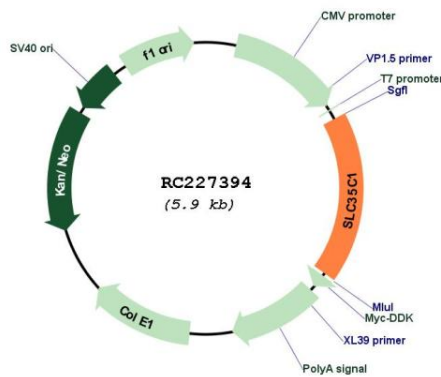
Cytogenetics: 11p11.2

Protein Families: Transmembrane

MW: 38.2 kDa

Gene Summary: This gene encodes a GDP-fucose transporter that is found in the Golgi apparatus. Mutations in this gene result in congenital disorder of glycosylation type IIc. Multiple transcript variants encoding different isoforms have been found for this gene. [provided by RefSeq, Feb 2009]

Product images:



Circular map for RC227394