

Product datasheet for **RC227391**

USP27X (NM_001145073) Human Tagged ORF Clone

Product data:

Product Type:	Expression Plasmids
Product Name:	USP27X (NM_001145073) Human Tagged ORF Clone
Tag:	Myc-DDK
Symbol:	USP27X
Synonyms:	MRX105; USP22L; USP27
Mammalian Cell Selection:	Neomycin
Vector:	pCMV6-Entry (PS100001)
E. coli Selection:	Kanamycin (25 ug/mL)



[View online »](#)

ORF Nucleotide Sequence:

>RC227391 representing NM_001145073
 Red=Cloning site Blue=ORF Green=Tags(s)

TTTTGTAATACGACTCACTATAGGGCGGCCGGAATTCGTCGACTGGATCCGGTACCGAGGAGATCTGCC
 GCC**GCGATCGCC**

ATGTGTAAGGACTATGTATATGACAAAGACATTGAGCAAATTGCCAAAGAAGAGCAAGGAGAAGCTTTGA
 AATTACAAGCCTCCACCTCAACAGAGGTTTCTCACCAGCAGTGTTCAAGTCCAGGCCTTGGTGAGAAATT
 CCCAACCTGGGAAACAACCAACAGAATTAGAACTGCTGGGGCACAACCCGAGGAGAAGAAGAATCACC
 TCCAGCTTTACGATCGGTTAAGAGGACTCATCAATCTTGGCAACACGTGCTTTATGAACTGCATTGTCC
 AGGCCCTCACCCACGCGGATACTGAGAGATTTCTTTCTCTGACAGGCACCGATGTGAGATGCCGAG
 TCCCGAGTTGTGCTGGTCTGTGAGATGTCGTCGCTGTTTCGGGAGTTGTATTCTGGAAACCCGTCCTCT
 CATGTGCCCTATAAGTTACTGCACCTGGTGTGGATACATGCCCGCCATTTAGCAGGGTACAGGCAACAGG
 ATGCCACGAGTTCCTCATTGCAGCGTTAGATGTCCTGCACAGGCACTGCAAAGGTGATGATGTCGGGAA
 GCGGCCAACAAATCCCAACCACTGTAATGCATCATAGACCAAACTTTCACAGGTGGCCTGCAGTCTGAT
 GTACCTGTCAAGCCTGCCATGGCGTCTCCACCAGATAGACCCATGCTGGGACATTAGTTTGGACTTGC
 CTGGCTCTTGACCTCCTTCTGGCCATGAGCCAGGGAGGAGAGCAGTGTGAACGGGGAAAGCCACAT
 ACCAGGAATCACACCCTCACGGACTGCTTGGGAGGTTTACGAGGCCAGAGCACTTAGGAAGCAGTGCC
 AAAATCAAATGTGGTAGTTGCCAAAGCTACCAGGAATCTACCAAACAGCTCACAATGAATAAATTACCTG
 TCGTTGCCTGTTTTCAATTAACCGGTTTGAACATTACAGCAAACAGAGGCGCAAGATCACTACATACAT
 TTCCTTCTCTGGAGCTGGATATGACGCCGTTTATGGCTCAAGTAAAGAGAGCAGAATGAATGGACAA
 TTGCAGCTGCCAACCAATAGTGGAAACAACGAAAATAAGTATTCCTTGTGGTGTGTTAATCACCAAG
 GAACCTTGAGAGTGGCCACTATACCAGTTCATCCGGCACCACAAGGACCAGTGGTTCAAGTGTGATGA
 TGCCGTCACTAAGGCCAGTATTAAGGACGTACTGGACAGTGAAGGGTATTTACTGTTCTATCACAAA
 CAGGTGCTAGAACATGAGTCAGAAAAAGTGAAGAAATGAACACACAAGCCTAC

ACGCGTACGCGGCCGCTCGAGCAGAACTCATCTCAGAAGAGGATCTGGCAGCAAATGATATCCTGGATT
 ACAAGGATGACGACGATAAGGTTTAA

Protein Sequence:

>RC227391 representing NM_001145073
 Red=Cloning site Green=Tags(s)

MCKDYVYDKDIEQIAKEEQGEALKLQASTSTEVSHQQCSVPGLGEKFPTWETTKPELELLGHNPRRRRIT
 SSFTIGLRGLINLGNTCFMNCIVQALHTPILRDFFLSDRHRCEMPSPELCLVCEMSSLFREL YSGNPSP
 HVPYKLLHLVWIHARHLAGYRQDAHEFLIAALDVLHRHCKGDDVGKAANNPNHCNCIIDQIFTGGLQSD
 VTCQACHGVSTTIDPCWDISLDLPGSCTSFWPMSPGRESSVNGESHIPGITTLTDCLRRFTRPEHLGSSA
 KIKCGSCQSYQESTKQLTMNKLPVVACFHFKRFEHSAKQRRKITYISFPLELDMTPFMASKESRMNGQ
 LQLPTNSGNNENKYSLFAVNVHQGTLESGHYTSFIRHHKDQWFKCDDAVITKASIKDVL DSEG YLLFYHK
 QVLEHESEKVKEMNTQAY

TRTRPLEQKLISEEDLAANDILDYKDDDDKV

Chromatograms:

https://cdn.origene.com/chromatograms/mk8035_h08.zip

Restriction Sites:

Sgfl-Mlul

Cloning Scheme:


ACCN: NM_001145073

ORF Size: 1314 bp

OTI Disclaimer: The molecular sequence of this clone aligns with the gene accession number as a point of reference only. However, individual transcript sequences of the same gene can differ through naturally occurring variations (e.g. polymorphisms), each with its own valid existence. This clone is substantially in agreement with the reference, but a complete review of all prevailing variants is recommended prior to use. [More info](#)

OTI Annotation: This clone was engineered to express the complete ORF with an expression tag. Expression varies depending on the nature of the gene.

Components: The ORF clone is ion-exchange column purified and shipped in a 2D barcoded Matrix tube containing 10ug of transfection-ready, dried plasmid DNA (reconstitute with 100 ul of water).

Reconstitution Method:

1. Centrifuge at 5,000xg for 5min.
2. Carefully open the tube and add 100ul of sterile water to dissolve the DNA.
3. Close the tube and incubate for 10 minutes at room temperature.
4. Briefly vortex the tube and then do a quick spin (less than 5000xg) to concentrate the liquid at the bottom.
5. Store the suspended plasmid at -20°C. The DNA is stable for at least one year from date of shipping when stored at -20°C.

RefSeq: [NM_001145073.3](#)

RefSeq ORF: 1317 bp

Locus ID: 389856

UniProt ID: [A6NNY8](#)

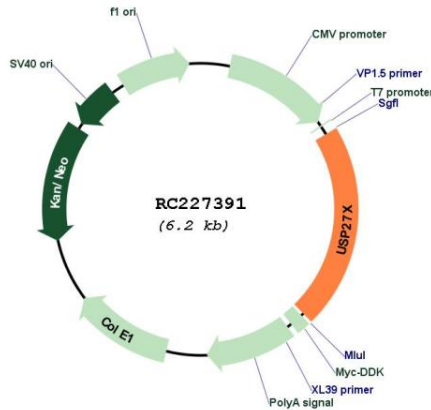
Cytogenetics: Xp11.23

MW: 49.5 kDa

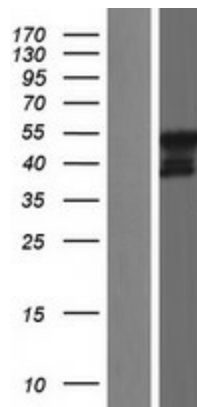
Gene Summary:

This gene encodes a member of the peptidase protein family. The encoded protein functions as a deubiquitinase that is involved in upregulation of the pro-apoptotic Bim protein. This protein may act as a tumor suppressor by increasing levels of Bim to counteract anti-apoptotic signals in cancer cells. Mutations in this gene have been associated with X-linked cognitive disability. [provided by RefSeq, Dec 2016]

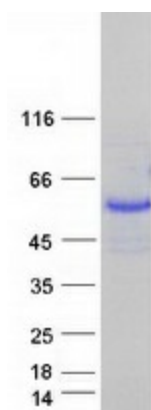
Product images:



Circular map for RC227391



Western blot validation of overexpression lysate (Cat# [LY428674]) using anti-DDK antibody (Cat# [TA50011-100]). Left: Cell lysates from untransfected HEK293T cells; Right: Cell lysates from HEK293T cells transfected with RC227391 using transfection reagent MegaTran 2.0 (Cat# [TT210002]).



Coomassie blue staining of purified USP27X protein (Cat# [TP327391]). The protein was produced from HEK293T cells transfected with USP27X cDNA clone (Cat# RC227391) using MegaTran 2.0 (Cat# [TT210002]).