

Product datasheet for RC227383

CITED1 (NM_001144887) Human Tagged ORF Clone

Product data:

Product Type: Expression Plasmids
Product Name: CITED1 (NM_001144887) Human Tagged ORF Clone
Tag: Myc-DDK
Symbol: CITED1
Synonyms: MSG1
Mammalian Cell Selection: Neomycin
Vector: pCMV6-Entry (PS100001)
E. coli Selection: Kanamycin (25 ug/mL)
ORF Nucleotide Sequence: >RC227383 ORF sequence
 Red=Cloning site Blue=ORF Green=Tags(s)

TTTTGTAATACGACTCACTATAGGGCGGCCGGAATTCGTCGACTGGATCCGGTACCGAGGAGATCTGCC
 GCC**CGATCGCC**

ATGCCAACACGTGAGGCTGCACTTGTGTCAAGGGTGGCACCTCACCTGCGAAGGAGGATGCCAAC
 AAGAGATGAGCTCCGTGGCCTACTCCAACCTTGCAGTAAAGATCGCAAAGCAGTGGCCATTCTGCACTA
 CCCTGGGGTAGCCTCAAATGGAACCAAGGCCAGTGGGGCTCCACTAGTTCCTCGGGATCTCCAATAGGC
 TCTCTACAACCCCTCCCACTAAACCCCATCTTCAACCTGCACCCGCCCTCCTTGTCTGGCTA
 GTATGCAGCTGCAGAACTTAATAGCCAGTATCAGGGGATGGCTGCTGCCACTCCAGGCCAACCCGGGA
 GGCAGGACCCCTGCAAACTGGGACTTTGGGGCCAGGCGGGAGGGGCAGAACTACTCTCTCTTCTGCT
 GGTGCCAGAGCCCTGCTATCATCGATTTCGACCCAGTGGATGAGGAAGTCTGATGTCGCTGGTGGTG
 AACTGGGGTTGGACCGAGCCAATGAGCTTCGGGAGCTGTGGCTGGGGCAGAAATGAGTTTGACTTCACTGC
 GGACTTTCATCTAGCTGC

ACGCGTACGCGGCCGCTCGAGCAGAACTCATCTCAGAAGAGGATCTGGCAGCAATGATATCCTGGATT
 ACAAGGATGACGACGATAAGGTTTAA

Protein Sequence: >RC227383 protein sequence
 Red=Cloning site Green=Tags(s)

MPTTSRPALDVKGGTSPAKEDANQEMSSVAYSNLAVKDRKAVAILHYPGVASNGTKASGAPTSSSGSPIG
 SPTTTPPTKPPSFLHPAPHLASMLQLKLSQYQGMMAATPGQPGEAGPLQNWDFGAQAGGAESLSPSA
 GAQSPAIDSDPVDEEVLMSELVLEGLDRANELPELWLGQNEFDFTADFPSSC

TRTRPLEQKLISEEDLAANDILDYKDDDDKV

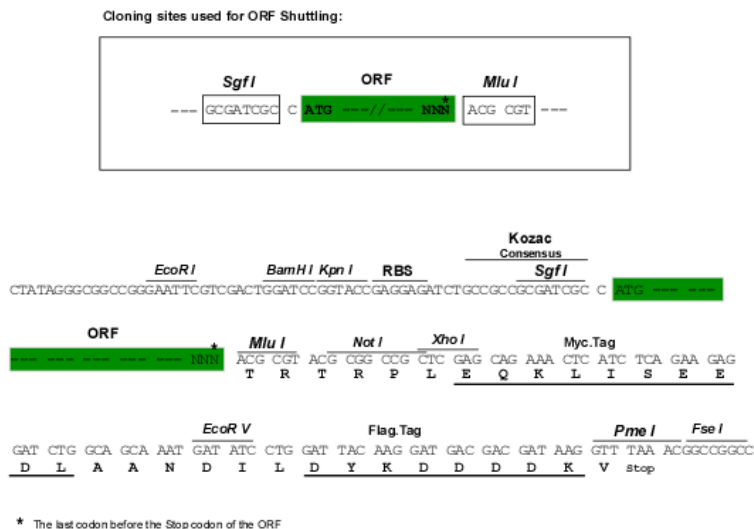


[View online »](#)

Chromatograms: https://cdn.origene.com/chromatograms/mk6213_e09.zip

Restriction Sites: Sgfl-MluI

Cloning Scheme:



ACCN: NM_001144887

ORF Size: 579 bp

OTI Disclaimer: The molecular sequence of this clone aligns with the gene accession number as a point of reference only. However, individual transcript sequences of the same gene can differ through naturally occurring variations (e.g. polymorphisms), each with its own valid existence. This clone is substantially in agreement with the reference, but a complete review of all prevailing variants is recommended prior to use. [More info](#)

OTI Annotation: This clone was engineered to express the complete ORF with an expression tag. Expression varies depending on the nature of the gene.

Components: The ORF clone is ion-exchange column purified and shipped in a 2D barcoded Matrix tube containing 10ug of transfection-ready, dried plasmid DNA (reconstitute with 100 ul of water).

Reconstitution Method:

1. Centrifuge at 5,000xg for 5min.
2. Carefully open the tube and add 100ul of sterile water to dissolve the DNA.
3. Close the tube and incubate for 10 minutes at room temperature.
4. Briefly vortex the tube and then do a quick spin (less than 5000xg) to concentrate the liquid at the bottom.
5. Store the suspended plasmid at -20°C. The DNA is stable for at least one year from date of shipping when stored at -20°C.

RefSeq: [NM_001144887.1](#), [NP_001138359.1](#)

RefSeq Size: 830 bp

RefSeq ORF: 582 bp

Locus ID: 4435

UniProt ID: [Q99966](#)

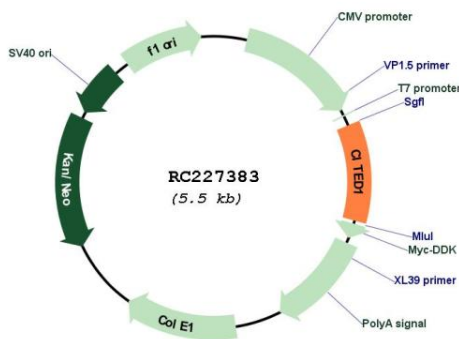
Cytogenetics: Xq13.1

Protein Families: Transcription Factors

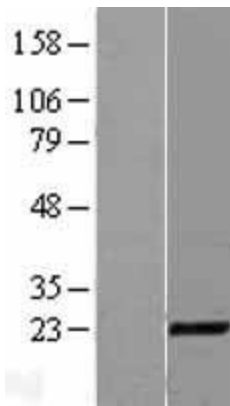
MW: 19.9 kDa

Gene Summary: This gene encodes a member of the CREB-binding protein/p300-interacting transactivator with Asp/Glu-rich C-terminal domain (CITED) family of proteins. The encoded protein, also known as melanocyte-specific gene 1, may function as a transcriptional coactivator and may play a role in pigmentation of melanocytes. Alternatively spliced transcript variants have been described. [provided by RefSeq, Jan 2009]

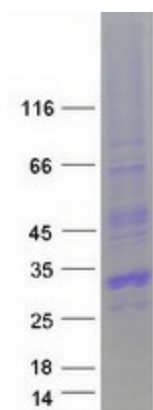
Product images:



Circular map for RC227383



Western blot validation of overexpression lysate (Cat# [LY428547]) using anti-DDK antibody (Cat# [TA50011-100]). Left: Cell lysates from untransfected HEK293T cells; Right: Cell lysates from HEK293T cells transfected with RC227383 using transfection reagent MegaTran 2.0 (Cat# [TT210002]).



Coomassie blue staining of purified CITED1 protein (Cat# [TP327383]). The protein was produced from HEK293T cells transfected with CITED1 cDNA clone (Cat# RC227383) using MegaTran 2.0 (Cat# [TT210002]).