

Product datasheet for RC227379

TPRA1 (NM_001136053) Human Tagged ORF Clone

Product data:

Product Type:	Expression Plasmids
Product Name:	TPRA1 (NM_001136053) Human Tagged ORF Clone
Tag:	Myc-DDK
Symbol:	TPRA1
Synonyms:	GPR175; TMEM227; TPRA40
Mammalian Cell Selection:	Neomycin
Vector:	pCMV6-Entry (PS100001)
E. coli Selection:	Kanamycin (25 ug/mL)
ORF Nucleotide Sequence:	>RC227379 ORF sequence Red=Cloning site Blue=ORF Green=Tags(s)

TTTTGTAATACGACTCACTATAGGGCGGCCGGAATTCGTCGACTGGATCCGGTACCGAGGAGATCTGCCGCCCGATCGCC

ATGGACACCTGGAGGAGGTGACTTGGGCAATGGGAGCACAGCGCTACCCACCCCTGGCACAAACA
TCAGTGTGCCTCATCGCTGCCTGCTGCTCTACGAAGACATTGGCACCTCCAGGGTCCGGTACTGGGA
CCTTTGTGCTCATCCCAATGTGCTCTTCTCATCTTCTGCTCTGGAAGCTTCCATCTGCTCGGGCG
AAGATCCGCATCACCTCCAGCCCATTTTATCACCTTCTACATCCTGGTGTGGTGGCGCTGGTGG
GCATTGCCGGGCGGTGGTATCCATGACGGTGAGCACCTCGAACGCTGCAACTGTTGCTGATAAGATCCT
GTGGGAGATCACCGCTTCTTCTGCTGGCCATCGAGCTGAGTGTGATCATCCTGGGCTGGCCTTTGGC
CACCTGGAGAGTAAGTCCAGCATCAAGCGGGTGTGGCCATCACACAGTGTGTCCCTGGCCTACTCTG
TACCCAGGGGACCTGGAGATCCTGTACCCTGATGCCCATCTCTCAGCTGAGGACTTTAATATCTATGG
CCATGGGGGCGCCAGTTCTGGCTGGTCAGCTCCTGCTTCTTCTTCTGCTACTCTCTGGTGGTCATC
CTTCCAAGACCCCGTGAAGGAGCGCATCTCCCTGCCTTCTCGGAGGAGCTTCTACGTGTATGCGGGCA
TCCTGGCACTGCTCAACCTACTGCAGGGGCTGGGAGTGTGCTGCTGTGCTTTCGACATCATCGAGGGCT
CTGCTGTGTAGATGCCACAACCTTCTGTACTTACGCTTCTTTCGCTCCGCTCATCTACGTGGCTTTCCTC
CGGGCTTCTTTCGGCTCGGAGCCCAAGATCCTTCTCCTACAAATGCCAAGTGGACGAGACAGAGGAGC
CAGATGTACACCTACCCAGCCCTACGCTGTGGCCCGGGAGGCGCTGGAGGCTGCAGGGGCTGCTGG
GGCCTCAGCTGCCAGCTACTCGAGCAGCGAGTTCGACTCTGCCGGCGGGGTGGCCTACCTGGATGACATC
GCTTCCATGCCCTGCCACTGGCAGCATCAACAGCACAGACAGCGAGCGCTGGAAGGCCATCAATGCC

ACGCGTACGCGGCCGCTCGAGCAGAACTCATCTCAGAAGAGGATCTGGCAGCAAATGATATCCTGGATT
ACAAGGATGACGACGATAAGGTTAA



[View online »](#)

Protein Sequence: >RC227379 protein sequence
 Red=Cloning site Green=Tags(s)

MDTLEEVWANGSTALPPPLAPNISVPHRCLLLLIEDIGTSRVRYWLLLLIPNVLFLLWKLPSARA
 KIRITSSPFIITFYILVFVVALVGIARAVVSMVSTVSTNAATVADKILWEITRFFLLAIELSVIILGLAFG
 HLESKSSIKRVLAITTVLSLAYSVTQGTLEILYPDAHLSAEDFNIYHGGRQFWLVSSCFFFLVYSLVVI
 LPKTPKLERISLPSRRSFVYVYAGILALLNLLQGLGVLCCFDIIIEGLCCVDATTFLYFSFFAPLIYVAF
 RGFFGSEPKILFSYKCQVDETEEPDVHLPPQYAVARREGLEAAGAAGASAASYSSSTQFDSAGGVAYLDDI
 ASMPCHTGSINSTDSERWKAINA

TRTRPLEQKLISEEDLAANDILDYKDDDDKV

Chromatograms: https://cdn.origene.com/chromatograms/mk6093_d10.zip

Restriction Sites: SgfI-MluI

Cloning Scheme:



ACCN: NM_001136053

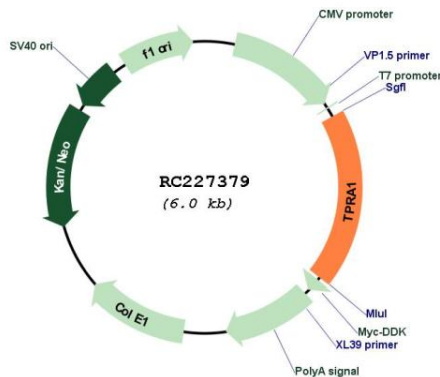
ORF Size: 1119 bp

OTI Disclaimer: Due to the inherent nature of this plasmid, standard methods to replicate additional amounts of DNA in E. coli are highly likely to result in mutations and/or rearrangements. Therefore, OriGene does not guarantee the capability to replicate this plasmid DNA. Additional amounts of DNA can be purchased from OriGene with batch-specific, full-sequence verification at a reduced cost. Please contact our customer care team at custsupport@origene.com or by calling 301.340.3188 option 3 for pricing and delivery.

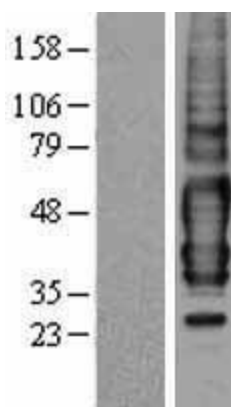
The molecular sequence of this clone aligns with the gene accession number as a point of reference only. However, individual transcript sequences of the same gene can differ through naturally occurring variations (e.g. polymorphisms), each with its own valid existence. This clone is substantially in agreement with the reference, but a complete review of all prevailing variants is recommended prior to use. [More info](#)

- OTI Annotation:** This clone was engineered to express the complete ORF with an expression tag. Expression varies depending on the nature of the gene.
- Components:** The ORF clone is ion-exchange column purified and shipped in a 2D barcoded Matrix tube containing 10ug of transfection-ready, dried plasmid DNA (reconstitute with 100 ul of water).
- Reconstitution Method:**
1. Centrifuge at 5,000xg for 5min.
 2. Carefully open the tube and add 100ul of sterile water to dissolve the DNA.
 3. Close the tube and incubate for 10 minutes at room temperature.
 4. Briefly vortex the tube and then do a quick spin (less than 5000xg) to concentrate the liquid at the bottom.
 5. Store the suspended plasmid at -20°C. The DNA is stable for at least one year from date of shipping when stored at -20°C.
- RefSeq:** [NM_001136053.4](#)
- RefSeq Size:** 1964 bp
- RefSeq ORF:** 1122 bp
- Locus ID:** 131601
- UniProt ID:** [Q86W33](#)
- Cytogenetics:** 3q21.3
- Protein Families:** Druggable Genome, Transmembrane
- MW:** 41.1 kDa

Product images:



Circular map for RC227379



Western blot validation of overexpression lysate (Cat# [LY427797]) using anti-DDK antibody (Cat# [TA50011-100]). Left: Cell lysates from untransfected HEK293T cells; Right: Cell lysates from HEK293T cells transfected with RC227379 using transfection reagent MegaTran 2.0 (Cat# [TT210002]).