

Product datasheet for RC227378

CITED1 (NM_001144886) Human Tagged ORF Clone

Product data:

Product Type: Expression Plasmids
Product Name: CITED1 (NM_001144886) Human Tagged ORF Clone
Tag: Myc-DDK
Symbol: CITED1
Synonyms: MSG1
Mammalian Cell Selection: Neomycin
Vector: pCMV6-Entry (PS100001)
E. coli Selection: Kanamycin (25 ug/mL)
ORF Nucleotide Sequence: >RC227378 ORF sequence
 Red=Cloning site Blue=ORF Green=Tags(s)

TTTTGTAATACGACTCACTATAGGGCGGCCGGAATTCGTCGACTGGATCCGGTACCGAGGAGATCTGCC
 GCC**CGATCGCC**

ATGCCAACACGTGAGGCTGCACTTGTGTCAAGGGTGGCACCTCACCTGCGAAGGAGGATGCCAAC
 AAGAGATGAGCTCCGTGGCTACTCCAACCTTGGCGTAAAGATCGCAAAGCAGTGGCCATTCTGCACTA
 CCCTGGGGTAGCCTCAAATGGAACCAAGGCCAGTGGGGCTCCACTAGTTCCTCGGGATCTCCAATAGGC
 TCTCTACAACCCCTCCCACTAAACCCCATCTTCAACCTGCACCCGCCCTCCTTGTCTGGCTA
 GTATGCAGCTGCAGAACTTAATAGCCAGTATCAGGGGATGGCTGCTGCCACTCCAGGCCAACCCGGGA
 GGCAGGACCCCTGCAAACTGGGACTTTGGGGCCAGGCGGGAGGGGCAGAACTACTCTCTCTTCTGCT
 GGTGCCAGAGCCCTGCTATCATCGATTTCGACCCAGTGGATGAGGAAGTGTGATGTCGCTGGTGGTG
 AACTGGGGTTGGACCGAGCCAATGAGCTTCGGGAGCTGTGGCTGGGGCAGAAATGAGTTTGACTTCACTGC
 GGACTTTCATCTAGCTGC

ACGCGTACGCGGCCGCTCGAGCAGAACTCATCTCAGAAGAGGATCTGGCAGCAATGATATCCTGGATT
 ACAAGGATGACGACGATAAGGTTTAA

Protein Sequence: >RC227378 protein sequence
 Red=Cloning site Green=Tags(s)

MPTTSRPALDVKGGTSPAKEDANQEMSSVAYSNLAVKDRKAVAILHYPGVASNGTKASGAPTSSSGSPIG
 SPTTTPPTKPPSFNLHPAPHLASMLQLKLSQYQGMAAATPGQPGEAGPLQNWDFGAQAGGAESLSPSA
 GAQSPAIDSDPVDEEVLMSELVVELGLDRANELPELWLGQNEFDFTADFPSSC

TRTRPLEQKLISEEDLAANDILDYKDDDDKV



[View online »](#)

UniProt ID: [Q99966](#)

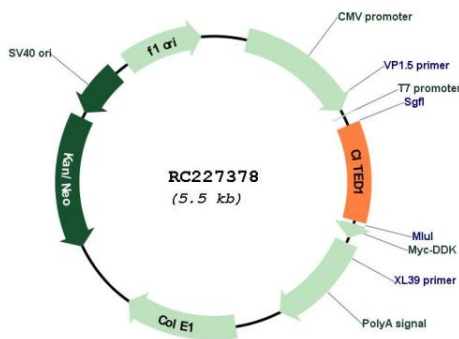
Cytogenetics: Xq13.1

Protein Families: Transcription Factors

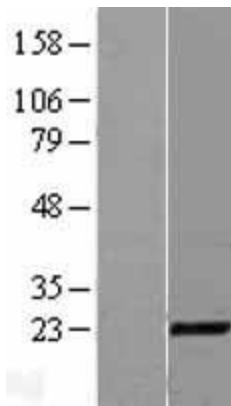
MW: 19.9 kDa

Gene Summary: This gene encodes a member of the CREB-binding protein/p300-interacting transactivator with Asp/Glu-rich C-terminal domain (CITED) family of proteins. The encoded protein, also known as melanocyte-specific gene 1, may function as a transcriptional coactivator and may play a role in pigmentation of melanocytes. Alternatively spliced transcript variants have been described. [provided by RefSeq, Jan 2009]

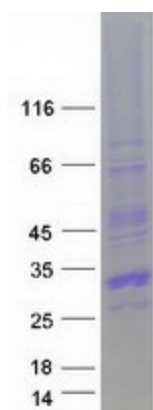
Product images:



Circular map for RC227378



Western blot validation of overexpression lysate (Cat# [LY428547]) using anti-DDK antibody (Cat# [TA50011-100]). Left: Cell lysates from untransfected HEK293T cells; Right: Cell lysates from HEK293T cells transfected with [RC227383] using transfection reagent MegaTran 2.0 (Cat# [TT210002]).



Coomassie blue staining of purified CITED1 protein (Cat# [TP327378]). The protein was produced from HEK293T cells transfected with CITED1 cDNA clone (Cat# RC227378) using MegaTran 2.0 (Cat# [TT210002]).