

## Product datasheet for RC227367

### HEAB (CLP1) (NM\_001142597) Human Tagged ORF Clone

#### Product data:

Product Type:	Expression Plasmids
Product Name:	HEAB (CLP1) (NM_001142597) Human Tagged ORF Clone
Tag:	Myc-DDK
Symbol:	HEAB
Synonyms:	hClp1; HEAB
Mammalian Cell Selection:	Neomycin
Vector:	pCMV6-Entry (PS100001)
E. coli Selection:	Kanamycin (25 ug/mL)
ORF Nucleotide Sequence:	>RC227367 representing NM_001142597 Red=Cloning site Blue=ORF Green=Tags(s)

TTTTGTAATACGACTCACTATAGGGCGCCGGGAATTCGTCGACTGGATCCGGTACCGAGGAGATCTGCC  
GCC**CGATCGCC**

ATGGGAGAAGAGGCTAATGATGACAAGAAGCCAACCACTAAATTTGAACTAGAGCGAGAAACAGAACTTC  
GCTTTGAGGTGGAGGCATCTCAGTCAGTTCAGTTGGAGTTGTTGACTGGCATGGCAGAGATCTTTGGCAC  
AGAGCTGACCCGAAACAAGAAATTCACCTTTGATGCTGGTCCAAAGGTGGCTGTTTTCACTTGGCATGGC  
TGTTCTGTGCAACTGAGCGGCCGCACTGAGGTGGCTTATGTCTCCAAGGACACTCCTATGTTGCTTTACC  
TCAACTCACACAGCCTTGAACAGATGCGGAGGCAAGCGAAAAGGAAGAAGCGAGGTCCCGGAGT  
GATGGTAGTGGGCCCCACTGATGTGGGCAAGTCTACAGTGTGTCGCTTCTGCTCAACTACGCAATTACA  
TCTCGTTTAGCAGATGTGTTCAACCAAAGTGTGAGGTGAACCGAAGGGCATCTGTGAGTGGCTGTGTCA  
TTAACACCTGTGGCTGGGTCAAGGGCTCTGGTTACCAGGCTCTGGTGCATGCAGCCTCAGCTTTTGGGT  
GGATGTCGTTGTTGTTCTGGATCAAGAACGACTGTACAATGAACTGAAACGGGACCTCCCCACTTTGTA  
CGCACTGTGCTGCTCCATAATCTGGGGTGTGGTGGAGCGCTCCAAGGACTTCCGGCGGGAATGTAGGG  
ATGAGCGTATCCGTGAGTATTTTATGGATTCCGAGGCTGTTTCTATCCCATGCCTTCAATGTCAAATT  
TTCAGATGTGAAAATCTACAAAGTTGGGCACCCACCATCCAGACTCCTGTTTACCTTTGGGCATGTCT  
CAAGAGGATAATCAGCTCAAGCTAGTACCTGTCACTCCTGGCGAGATATGGTGCACCACCTACTGAGTG  
TTAGCACTGCCGAGGGTACAGAGGAGAACCTGTCCGAGACAAGTGTAGCTGGCTTCATTGTGGTGACCAG  
TGTGGACCTGGAGCATCAGGTGTTTACTGTTCTGTCTCCAGCCCTCGCCCACTGCCTAAGAACTTCCTT  
CTCATCATGGATATCCGGTTCATGGATCTGAAG

**ACGCGT**ACGCGGCCGCTCGAGCAGAAACTCATCTCAGAAGAGGATCTGGCAGCAAATGATATCCTGGATT  
ACAAGGATGACGACGATAAGGTTTAA



[View online »](#)

**Protein Sequence:** >RC227367 representing NM\_001142597  
Red=Cloning site Green=Tags(s)

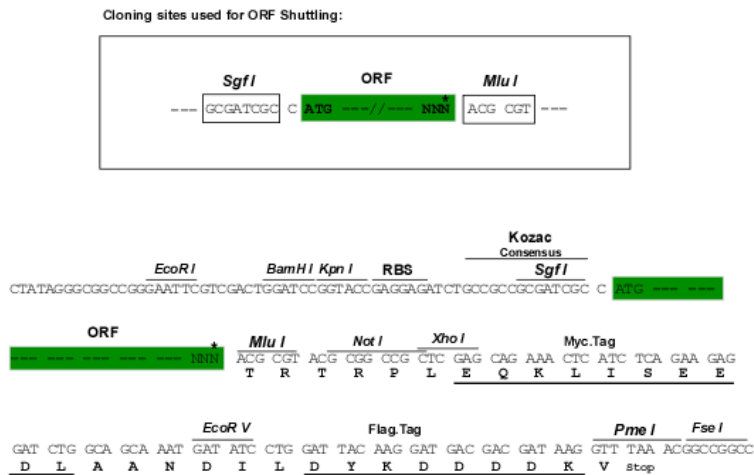
MGEEANDDKPPTTKFELERETELRFEVEASQSVQLELLTGMAEIFGTELTRNKKFTFDAGAKVAVFTWHG  
 CSVQLSGRTEVAYVSKDTPMLLYLNTHTALEQMRRQAEKEEERGPRVMVVGPTDVGKSTVCRLLLNYAIT  
 SRLADVFNQRCEVNRASVSGCVINTCGWVKSGGYQALVHAASAFEVDVVVLDQERLYNELKRDLPHFV  
 RTVLLPKSGGVVERSKDFRRECRDERIREYFYGFRGCFYPHAFNVKFSVKIYKVGAPTIPDSCLPLGMS  
 QEDNQLKLVPTPGRDMVHLLSVSTAEGTEENLSETSVAGFIVVTSVDLEHQVFTVLSAPRPLPKNFL  
 LIMDIRFMDLK

TRTRPLEQKLISEEDLAANDILDYKDDDDKV

**Chromatograms:** [https://cdn.origene.com/chromatograms/mk8054\\_g07.zip](https://cdn.origene.com/chromatograms/mk8054_g07.zip)

**Restriction Sites:** SgfI-MluI

**Cloning Scheme:**



\* The last codon before the Stop codon of the ORF

**ACCN:** NM\_001142597

**ORF Size:** 1083 bp

**OTI Disclaimer:** The molecular sequence of this clone aligns with the gene accession number as a point of reference only. However, individual transcript sequences of the same gene can differ through naturally occurring variations (e.g. polymorphisms), each with its own valid existence. This clone is substantially in agreement with the reference, but a complete review of all prevailing variants is recommended prior to use. [More info](#)

**OTI Annotation:** This clone was engineered to express the complete ORF with an expression tag. Expression varies depending on the nature of the gene.

**Components:** The ORF clone is ion-exchange column purified and shipped in a 2D barcoded Matrix tube containing 10ug of transfection-ready, dried plasmid DNA (reconstitute with 100 ul of water).

**Reconstitution Method:**

1. Centrifuge at 5,000xg for 5min.
2. Carefully open the tube and add 100ul of sterile water to dissolve the DNA.
3. Close the tube and incubate for 10 minutes at room temperature.
4. Briefly vortex the tube and then do a quick spin (less than 5000xg) to concentrate the liquid at the bottom.
5. Store the suspended plasmid at -20°C. The DNA is stable for at least one year from date of shipping when stored at -20°C.

**RefSeq:** [NM\\_001142597.1](#), [NP\\_001136069.1](#)

**RefSeq ORF:** 1086 bp

**Locus ID:** 10978

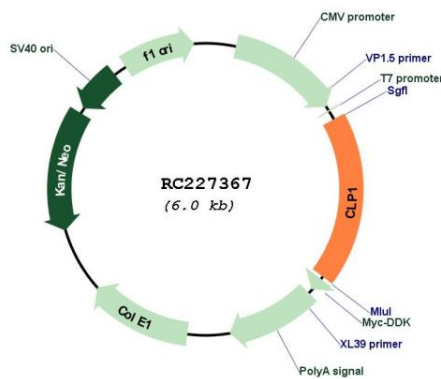
**UniProt ID:** [Q92989](#)

**Cytogenetics:** 11q12.1

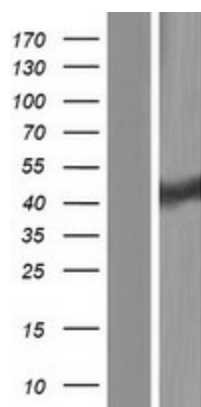
**MW:** 40.5 kDa

**Gene Summary:** This gene encodes a member of the Clp1 family. The encoded protein is a multifunctional kinase which is a component of the tRNA splicing endonuclease complex and a component of the pre-mRNA cleavage complex II. This protein is implicated in tRNA, mRNA, and siRNA maturation. Mutations in this gene are associated with pontocerebellar hypoplasia type 10 (PCH10). Alternatively splice transcript variants encoding different isoforms have been found for this gene. [provided by RefSeq, Sep 2014]

## Product images:



Circular map for RC227367



Western blot validation of overexpression lysate (Cat# [LY428198]) using anti-DDK antibody (Cat# [TA50011-100]). Left: Cell lysates from untransfected HEK293T cells; Right: Cell lysates from HEK293T cells transfected with RC227367 using transfection reagent MegaTran 2.0 (Cat# [TT210002]).