

Product datasheet for **RC227366**

RNF156 (MGRN1) (NM_001142290) Human Tagged ORF Clone

Product data:

Product Type:	Expression Plasmids
Product Name:	RNF156 (MGRN1) (NM_001142290) Human Tagged ORF Clone
Tag:	Myc-DDK
Symbol:	RNF156
Synonyms:	RNF156
Mammalian Cell Selection:	Neomycin
Vector:	pCMV6-Entry (PS100001)
E. coli Selection:	Kanamycin (25 ug/mL)



[View online »](#)

ORF Nucleotide Sequence:

>RC227366 representing NM_001142290
 Red=Cloning site Blue=ORF Green=Tags(s)

TTTTGTAATACGACTCACTATAGGGCGGCCGGAATTCGTCGACTGGATCCGGTACCGAGGAGATCTGCC
 GCC**GCGATCGCC**

ATGGGCTCCATTCTCAGCCGCCGATCGCGGGGTGGAGGACATCGACATCCAGGCGAACTCGGCCATC
 GCTACCCCTCCGAAGTCCGAAACTACTTTGCTTCGCACATTTTTCATGGGAGGAGAGAAATTCGACACCCC
 CCACCCTGAAGGTTACCTCTTTGGAGAGAACATGGATCTGAACCTCCTGGGCAGCCGCCCGTCCAGTTT
 CCCTACGTCACCTGCCCCCACGAGCCCGTGAAGACGCTGCGGAGCCTGGTGAACATCCGCAAAGACT
 CCCTGCGGCTGGTGAAGTACAAAGACGATGCCGACAGCCACCAGGACGGCGACAAGCCCGGGTGTCT
 CTACAGCCTGGAGTTCACCTTCGACGCCGATGCCCGCTGGCCATCACCATCTACTGCCAGGCATCGGAG
 GAGTTCCTGAACGGCAGGCGAGTACAGCCCCAAGAGCCCTCGCTACAGTCCGAGACCGTCCACTACA
 AGAGAGGGGTGAGCCAGCAGTTCCCTGCCCTCCTTCAAGATTGACTTCTCGGAATGGAAGGATGACGA
 GCTGAACCTTGGACCGGGGCGTGTTCAGTAGTCATCCAGGCTGTGGTGGACGAAGGAGATGTG
 GTGGAAGTGACTGCCACGCCACGTGCTTGGCTGCCTTTGAAAAGCAGATGGACGGCAGCTTCTCTG
 TGAAGCCTTTAAAGCAGAAGCAAATTTGGACCGGTCAGCTACCTCCTGCAGGAGATCTATGGCATTGA
 GAACAAGAACAACCAGGAGACCAAGCCCTCGGACGACGAGAACAGCGACAACAGCAACGAGTGTGTGGT
 TGCCGTGTCGACCTGCGGGACACGCTGATCCTGCCCTGCCGCCACCTGTGCCTCTGTACCTCCTGCGCC
 ACACGCTGCGCTACCAGGCCAACAACTGCCCATCTGCCGGTGCCTTTCGGGCCCTCCTGCAGATCCG
 GGCGGTGCGGAAGAAGCCAGGAGCCCTGTCCCGGTGTCTTCAGCCCCGCTGCCCCAGAGCCTGGAG
 CATGATGAGCACTTTGTCCCTTTAAAAAATCAAAGCCGACCCCGCCTCCTGGCCAGCAAGAAACCTA
 AAAGGAAACAACAACTCTGACAGCGTCCCACCTGGCTACGAGCCCATCTCGCTGCTCGAGCGCTCAACGG
 CCTCCGGGTGTCTCCCGGCCATCCCTCGGCCCTCTTATGAAGAAATCACCTATTCAGGCATCTCG
 GACGGCTGTCCAGGCCAGCTGTCCCTCGCGGCTATCGACCACATCCTGGACAGCAGCCGCCAGAAGG
 GCAGGCCGAGCAAGGCCCGGACAGCACCTACGGTCCCGTCTTCCCCATCCACGAAGAGGATGA
 GGAGAAGCTCTCCGAGGACGTGGACGCCCTCCCCACTGGGTGGCGCAGAGCTGGCCCTGCGGAAAGC
 AGCTCCCTGAGAGTTTCATAACAGAAGAGTTGATGAGTCGTCGTCACCACAGCAAGGGACCCGAGCAG
 CTTCCATTGAGAATGCTCAGGACAGCAGCCCCGAGCACTGTGGCCGAGGCCACCTGCTGACATCTA
 CCTGCCAGCCCTGGGGCCGACTCCTGCTGTGGTATAGACGAG

ACGCGTACGCGGCCGCTCGAGCAGAAACTCATCTCAGAAGAGGATCTGGCAGCAAATGATATCCTGGATT
 ACAAGGATGACGACGATAAGGTTTAA

Protein Sequence:

>RC227366 representing NM_001142290
 Red=Cloning site Green=Tags(s)

MGSILSRRIAGVEDIDIQANSAYRYPKSGNYFASHFFMGGEKFDTPHEGYLFGENMDLNLGSRPVQF
 PYVTPAPHEPVKTLRSLVNIRKDSLRLVRYKDDADSPTEGDGKPRVLYSLEFTFDADARVAITICYQASE
 EFLNGRAVYSPKSPSLQSETVHYKRGVSQQFSLPSFKIDFSEWKDDELNFDLDRGVFPVVIQAVVDEGDV
 VEVTGHAHVLLAAFEKHMDSFSVKPLKQKQIVDRVSYLLQEIYGIENKNNQETKPSDDENSNSNECVV
 CLSDLRDTLILPCRHLCLCTSCADTLRYQANNCPICRLPFRALLQIRAVRKKPGALSPVFSPLVAQSLE
 HDEHSCPFFKSKPHPASLASKPKRETNSDSVPPGYEPIISLLEALNGLRAVSPAIPSAPLYEEITYSGIS
 DGLSQASCPLAAIDHILDSRQKGRPQSKAPDSTLRSPSSIHEEDEEKLSEDVDAPPPLGGAELALRES
 SSPESFITEEVDESSPQQTAAASIEENVLQDSSPEHCGRGPPADIYLPALGPDSCSVGIDE

TRTRPLEQKLISEEDLAANDILDYKDDDDKV

Chromatograms:

https://cdn.origene.com/chromatograms/mk8066_h08.zip

Restriction Sites:

Sgfl-Mlul

Cloning Scheme:


ACCN: NM_001142290

ORF Size: 1656 bp

OTI Disclaimer: The molecular sequence of this clone aligns with the gene accession number as a point of reference only. However, individual transcript sequences of the same gene can differ through naturally occurring variations (e.g. polymorphisms), each with its own valid existence. This clone is substantially in agreement with the reference, but a complete review of all prevailing variants is recommended prior to use. [More info](#)

OTI Annotation: This clone was engineered to express the complete ORF with an expression tag. Expression varies depending on the nature of the gene.

Components: The ORF clone is ion-exchange column purified and shipped in a 2D barcoded Matrix tube containing 10ug of transfection-ready, dried plasmid DNA (reconstitute with 100 ul of water).

Reconstitution Method:

1. Centrifuge at 5,000xg for 5min.
2. Carefully open the tube and add 100ul of sterile water to dissolve the DNA.
3. Close the tube and incubate for 10 minutes at room temperature.
4. Briefly vortex the tube and then do a quick spin (less than 5000xg) to concentrate the liquid at the bottom.
5. Store the suspended plasmid at -20°C. The DNA is stable for at least one year from date of shipping when stored at -20°C.

RefSeq: [NM_001142290.2](#), [NP_001135762.1](#)

RefSeq ORF: 1659 bp

Locus ID: 23295

UniProt ID: [O60291](#)

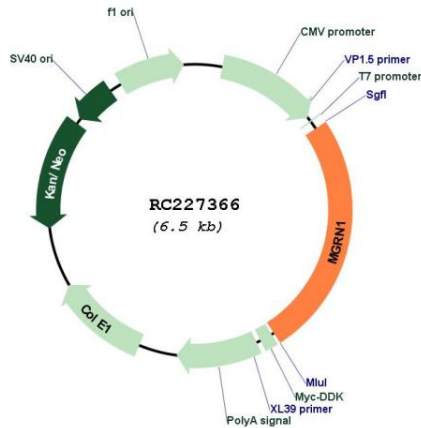
Cytogenetics: 16p13.3

Protein Pathways: Ubiquitin mediated proteolysis

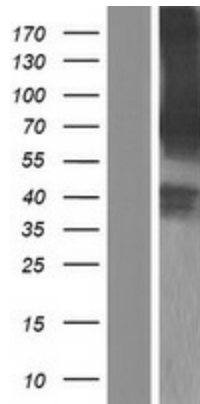
MW: 60.6 kDa

Gene Summary: Mahogunin (MGRN1) is a C3HC4 RING-containing protein with E3 ubiquitin ligase activity in vitro.[supplied by OMIM, Apr 2004]

Product images:



Circular map for RC227366



Western blot validation of overexpression lysate (Cat# [LY428013]) using anti-DDK antibody (Cat# [TA50011-100]). Left: Cell lysates from untransfected HEK293T cells; Right: Cell lysates from HEK293T cells transfected with RC227366 using transfection reagent MegaTran 2.0 (Cat# [TT210002]).