

## Product datasheet for **RC227356**

### **CITED1 (NM\_001144885) Human Tagged ORF Clone**

#### Product data:

**Product Type:** Expression Plasmids  
**Product Name:** CITED1 (NM\_001144885) Human Tagged ORF Clone  
**Tag:** Myc-DDK  
**Symbol:** CITED1  
**Synonyms:** MSG1  
**Mammalian Cell Selection:** Neomycin  
**Vector:** pCMV6-Entry (PS100001)  
**E. coli Selection:** Kanamycin (25 ug/mL)  
**ORF Nucleotide Sequence:** >RC227356 representing NM\_001144885  
**Red=Cloning site Blue=ORF Green=Tags(s)**

TTTTGTAATACGACTCACTATAGGGCGGCCGGAATTCGTCGACTGGATCCGGTACCGAGGAGATCTGCC  
GCC**CGATCGCC**

ATGGAACCATCCGCACAACAGCTCCAGCTGGCAGCATCACTTCCCGCAATTTATCCAATTCTGCCAAG  
GCTCTGAAATGCCAACACGTCGAGGCCTGCACCTGATGTCAAGGGTGGCACCTCACCTGCGAAGGAGGA  
TGCCAACCAAGAGATGAGCTCCGTGGCCTACTCCAACCTTGGCGTGAAAGATCGCAAAGCAGTGGCCATT  
CTGCACTACCCTGGGTAGCCTCAAATGGAACCAAGCCAGTGGGGCTCCCACTAGTTCTCTCGGGATCTC  
CAATAGGCTCTCCTACAACCACCCTCCCACTAAACCCCATCCTCAACCTGCACCCCGCCCTCACTT  
GCTGGCTAGTATGCACCTGCAGAACTTAATAGCCAGTATCAGGGGATGGCTGCTGCCACTCCAGGCCAA  
CCCGGGGAGGCAGGACCCCTGCAAACTGGGACTTTGGGGCCAGCGGGGAGGGGCAGAATCACTCTCTC  
CTTCTGCTGGTGCCAGAGCCCTGCTATCATCGATTCCGACCCAGTGGATGAGGAAGTGCTGATGTCGCT  
GGTGGTGGAACTGGGTTGGACCGAGCCAATGAGCTTCCGGAGCTGTGGCTGGGGCAGAATGAGTTTGAC  
TCACTGCGGACTTCCATCTAGCTGC

**ACGCGT**ACGCGGCGCTCGAGCAGAACTCATCTCAGAAGAGGATCTGGCAGCAATGATATCTGGATT  
ACAAGGATGACGACGATAAGGTTTAA



[View online »](#)

**Protein Sequence:** >RC227356 representing NM\_001144885  
 Red=Cloning site Green=Tags(s)

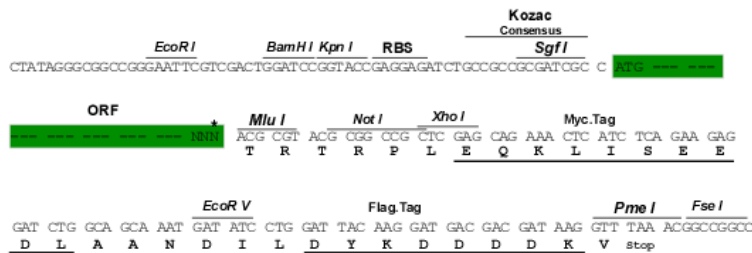
MEPSAQQQLAASLPANLSNFCQGSEMP TTSRPALDVKGGTSPA KEDANQEMSSVAYSNLAVKDRKAVAI  
 LHYPGVASNGTKASGAPTSSSGSPIGSP TTTPTTKPPSFNLHPAPHLLASMLHLQKLSQYQGMAAATPGQ  
 PGEAGPLQNWDFGAQAGGAESLSPSAGA QSPAIDS DPVDEEVLSLVLVGLDRANELPELWLQGNFEFD  
 FTADFPSSC

TRTRPLEQKLISEEDLAANDILDYKDDDDKV

**Restriction Sites:** SgfI-MluI

**Cloning Scheme:**

Cloning sites used for ORF Shuttling:



\* The last codon before the Stop codon of the ORF

**ACCN:** NM\_001144885

**ORF Size:** 657 bp

**OTI Disclaimer:** The molecular sequence of this clone aligns with the gene accession number as a point of reference only. However, individual transcript sequences of the same gene can differ through naturally occurring variations (e.g. polymorphisms), each with its own valid existence. This clone is substantially in agreement with the reference, but a complete review of all prevailing variants is recommended prior to use. [More info](#)

**OTI Annotation:** This clone was engineered to express the complete ORF with an expression tag. Expression varies depending on the nature of the gene.

**Components:** The ORF clone is ion-exchange column purified and shipped in a 2D barcoded Matrix tube containing 10ug of transfection-ready, dried plasmid DNA (reconstitute with 100 ul of water).

**Reconstitution Method:**

1. Centrifuge at 5,000xg for 5min.
2. Carefully open the tube and add 100ul of sterile water to dissolve the DNA.
3. Close the tube and incubate for 10 minutes at room temperature.
4. Briefly vortex the tube and then do a quick spin (less than 5000xg) to concentrate the liquid at the bottom.
5. Store the suspended plasmid at -20°C. The DNA is stable for at least one year from date of shipping when stored at -20°C.

**RefSeq:** [NM\\_001144885.1](#), [NP\\_001138357.1](#)

**RefSeq ORF:** 660 bp

**Locus ID:** 4435

**UniProt ID:** [Q99966](#)

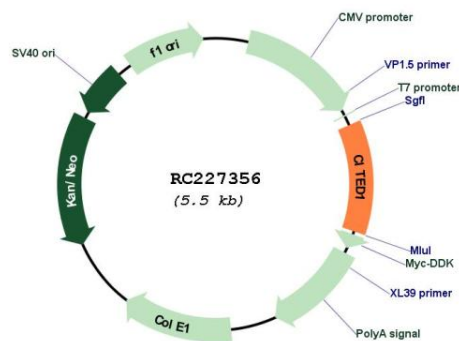
**Cytogenetics:** Xq13.1

**Protein Families:** Transcription Factors

**MW:** 22.4 kDa

**Gene Summary:** This gene encodes a member of the CREB-binding protein/p300-interacting transactivator with Asp/Glu-rich C-terminal domain (CITED) family of proteins. The encoded protein, also known as melanocyte-specific gene 1, may function as a transcriptional coactivator and may play a role in pigmentation of melanocytes. Alternatively spliced transcript variants have been described. [provided by RefSeq, Jan 2009]

## Product images:



Circular map for RC227356