

Product datasheet for **RC227351**

EGR2 (NM_001136178) Human Tagged ORF Clone

Product data:

Product Type:	Expression Plasmids
Product Name:	EGR2 (NM_001136178) Human Tagged ORF Clone
Tag:	Myc-DDK
Symbol:	EGR2
Synonyms:	AT591; CHN1; CMT1D; CMT4E; KROX20
Mammalian Cell Selection:	Neomycin
Vector:	pCMV6-Entry (PS100001)
E. coli Selection:	Kanamycin (25 ug/mL)



[View online »](#)

ORF Nucleotide Sequence:

>RC227351 representing NM_001136178
 Red=Cloning site Blue=ORF Green=Tags(s)

TTTTGTAATACGACTCACTATAGGGCGGCCGGAATTCGTCGACTGGATCCGGTACCGAGGAGATCTGCC
 GCC**CGCATCGCC**

ATGATGACCGCCAAGGCCGTAGACAAAATCCCAGTAACTCTCAGTGGTTTTGTGCACCAGCTGTCTGACA
 ACATCTACCCGGTGGAGGACCTCGCCGCCACGTGGTGACCATCTTTCCCAATGCCGAACCTGGGAGGCC
 CTTTGACCAGATGAACGGAGTGGCCGGAGATGGCATGATCAACATTGACATGACTGGAGAGAAGAGGTCCG
 TTGGATCTCCCATATCCAGCAGCTTTGCTCCCGTCTCTGCACCTAGAAACCAGACCTTCACTTACATGG
 GCAAGTTCTCCATTGACCCTCAGTACCCTGGTGCCAGCTGCTACCCAGAAGGCATAATCAATATTGTGAG
 TGCAGGCATCTTGAAGGGGTCACTTCCCAGCTTCAACCACAGCCTCATCCAGCGTCACCTCTGCCTCC
 CCCAACCCACTGGCCACAGGACCCCTGGGTGTGTGCACCATGTCCAGACCCAGCCTGACCTGGACCACC
 TGTACTCTCGCCACCGCTCCTCCTTATTCTGGCTGTGCAGGAGACCTCTACCAGGACCCCTCTGC
 GTTCTGTGACGACCCACCTCCACCTTCTCCTCTCTGGCCTACCCACCACCTCCTTCTATCCATCC
 CCCAAGCCAGCCAGGACCCAGGTCTTCCCAATGATCCAGACTATCCTGGATTCTTTCCATCTCAGT
 GCCAGAGAGACCTACATGGTACAGCTGGCCAGACCGTAAGCCCTTTCCCTGCCACTGGACACCCTGCG
 GGTGCCCCCTCCACTCACTCCACTCTCTACAATCCGTAACCTTTACCCTGGGGGGCCCAAGTCTGGGGTG
 ACCGGACCCAGGGCCAGTGGAGGACGAGGGACCCCGGCTGCCTGGTAGCAGCTCAGCAGCAGCAGCAG
 CCGCCGCCCGCCGCTATAACCCACACCACCTGCCACTGCGGCCCATCTGAGGCTCGCAAGTACCC
 CAACAGACCCAGCAAGACGCCGGTGCACGAGAGGCCCTACCCGTGCCAGCAGAAGGCTGCGACCCGGCGG
 TTCTCCCGCTCTGACGAGCTGACACGGCACATCCGAATCCACACTGGGCATAAGCCCTCCAGTGTGCGA
 TCTGCATGCGCAACTTCAGCCGCACTGACCACCTCACCACCCATATCCGCACCCACACCCGTGAGAACC
 CTTGCGCTGTGACTACTGTGGCCGAAAGTTTGCCCGGAGTGATGAGAGGAAGCCACACCAAGATCCAC
 CTGAGACAGAAAGAGCGGAAAAGCAGTGCCTCTGCATCGGTGCCAGCCCTCTACAGCCTCTGCT
 CTGGGGCGTGCAGCCTGGGGTACCCTGTGCAGCAGTAAACAGCAGCAGTCTTGGCGGAGGGCCGCTCG
 CCCTTGTCTCTCGGACCCGGACACT

ACGCGTACGCGGCCGCTCGAGCAGAAACTCATCTCAGAAGAGGATCTGGCAGCAATGATATCCTGGATT
 ACAAGGATGACGACGATAAGGTTTAA

Protein Sequence:

>RC227351 representing NM_001136178
 Red=Cloning site Green=Tags(s)

MMTAKAVDKIPVTLSGFVHQLSDNIYPVEDLAATSVTIFPNAELGGPFDQMNGVAGDGMINIDMTGEKRS
 LDLPYSSSFAPVSAPRNQFTTYMGKFSIDPQYPGASCYPEGIINIIVSAGILQGVTSASTTASSSVTSAS
 PNPLATGPLGVCTMSQTQPDLDHLYSPPPPPPPYSGCAGDLYQDPSAFLSAATTSTSSSLAYPPPPSYPS
 PKPATDPLGPFMIPDYPGFFPSQCQDRLHGTAGPDRKPFPCPLDTRLVPPPLTPLSTIRNFTLGGPSAGV
 TGPAGSGGSEGPRLPGSSSAAAAAAAAAYNPHHLPLRPILRPKYPNRPSKTPVHERPYPCPAEGCDRR
 FSRSDDELTRHIRIHTGHKPFQCRICMRNFSRSDHLTTHIRHTGKPFACDYCGRKFARSDERKRHTKIH
 LRQKERKSSAPSASVPAPSTASCSGGVQPGGTLCSNSSLGGGLAPCSSRTRTP

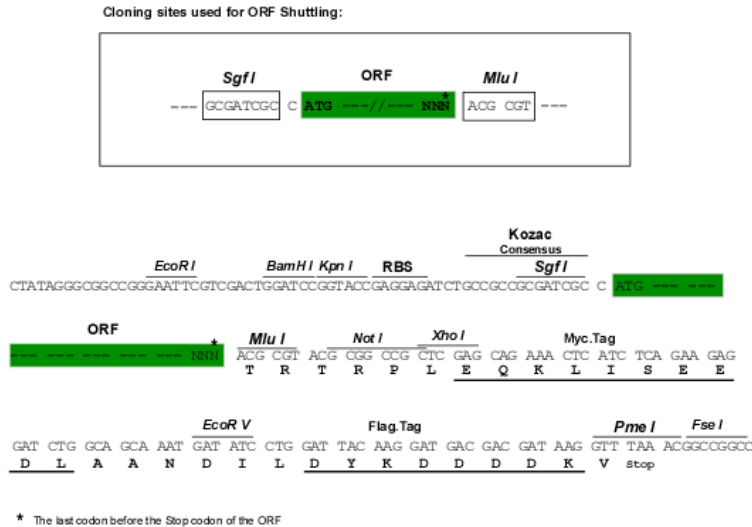
TRTRPLEQKLISEEDLAANDILDYKDDDDKV

Chromatograms:

https://cdn.origene.com/chromatograms/mk6484_e08.zip

Restriction Sites:

Sgfl-Mlul

Cloning Scheme:


ACCN: NM_001136178

ORF Size: 1428 bp

OTI Disclaimer: The molecular sequence of this clone aligns with the gene accession number as a point of reference only. However, individual transcript sequences of the same gene can differ through naturally occurring variations (e.g. polymorphisms), each with its own valid existence. This clone is substantially in agreement with the reference, but a complete review of all prevailing variants is recommended prior to use. [More info](#)

OTI Annotation: This clone was engineered to express the complete ORF with an expression tag. Expression varies depending on the nature of the gene.

Components: The ORF clone is ion-exchange column purified and shipped in a 2D barcoded Matrix tube containing 10ug of transfection-ready, dried plasmid DNA (reconstitute with 100 ul of water).

Reconstitution Method:

1. Centrifuge at 5,000xg for 5min.
2. Carefully open the tube and add 100ul of sterile water to dissolve the DNA.
3. Close the tube and incubate for 10 minutes at room temperature.
4. Briefly vortex the tube and then do a quick spin (less than 5000xg) to concentrate the liquid at the bottom.
5. Store the suspended plasmid at -20°C. The DNA is stable for at least one year from date of shipping when stored at -20°C.

RefSeq: [NM_001136178.1](#), [NP_001129650.1](#)

RefSeq ORF: 1431 bp

Locus ID: 1959

UniProt ID: [P11161](#)

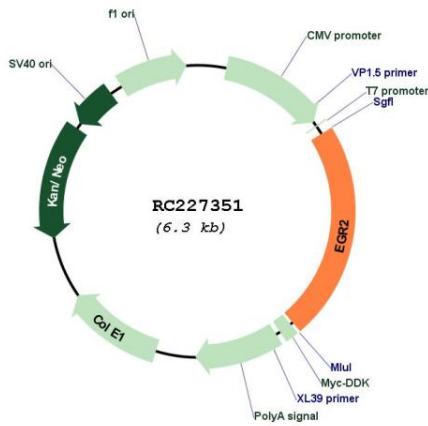
Cytogenetics: 10q21.3

Protein Families: Druggable Genome, Transcription Factors

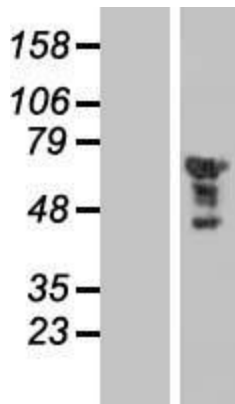
MW: 50.1 kDa

Gene Summary: The protein encoded by this gene is a transcription factor with three tandem C2H2-type zinc fingers. Defects in this gene are associated with Charcot-Marie-Tooth disease type 1D (CMT1D), Charcot-Marie-Tooth disease type 4E (CMT4E), and with Dejerine-Sottas syndrome (DSS). Multiple transcript variants encoding two different isoforms have been found for this gene. [provided by RefSeq, Oct 2008]

Product images:



Circular map for RC227351



Western blot validation of overexpression lysate (Cat# [LY427836]) using anti-DDK antibody (Cat# [TA50011-100]). Left: Cell lysates from untransfected HEK293T cells; Right: Cell lysates from HEK293T cells transfected with RC227351 using transfection reagent MegaTran 2.0 (Cat# [TT210002]).