

Product datasheet for **RC227342**

TMEM229A (NM_001136002) Human Tagged ORF Clone

Product data:

Product Type:	Expression Plasmids
Product Name:	TMEM229A (NM_001136002) Human Tagged ORF Clone
Tag:	Myc-DDK
Symbol:	TMEM229A
Mammalian Cell Selection:	Neomycin
Vector:	pCMV6-Entry (PS100001)
E. coli Selection:	Kanamycin (25 ug/mL)
ORF Nucleotide Sequence:	>RC227342 representing NM_001136002 Red=Cloning site Blue=ORF Green=Tags(s)

TTTTGTAATACGACTCACTATAGGGCGGCCGGAATTCGTCGACTGGATCCGGTACCGAGGAGATCTGCC
GCC**CGATCGCC**

ATGGCGGGGAGCGACGTGGACAGCGAGGGCCCCGCACGGAGGGGCGCGGGCGGGCGTCCGGGGGCC
CTGGCGGGCCAGGAAGCGAGGCGGCAGCCGGCTGCCCGGAGCCGCTGTCCACTGCTGAAGCGCCGGCTGA
GAGCGCCACGCTGCCCGCTGGATGCGCCTCTACTTCTACGGGATGCACGGGATCACCTGGACGTGCTG
GTGTCTCGGCCCGCGCTTCGCCCGCAGCCCGGACCTGCGGATGCTAGGCTTCTCTCGCCCTACCGCT
GCCTGCTGCACCTCGTCACCCATTTCCGCTGGAGAAGGTGTACCTGCAGCAGCGGCGCTGTCCCAACGC
CTTCGTCTTCAATTTCTCCTCTACCCCTCGGCCACGTGGGGCTGCAGACCCTAGCGGGCCAGGCGCTA
CTACTCAGCCTGGGCGGGGGCGGGGTGCGGTTGGCGCCAGGGGCGCTGGACCTGGCGCTGCAGTACG
TGCTGGCGCTCTACCACTGCCAAGTGTTCCTGAAGCGCTTCTGCGCTTGCGGTACGGGCGACAGAGGCG
GCGGCAGCAGCAACAGCAGCAGCAGCAGCAGCAGCAGCAGCAGCAGCGGAGGGGCGCGCTCCCGTCCCTCCCGC
GCCCGGTCCCTACTGCGGCCGAGCCCGCGGCGACGACCCCGTGGCCCGAGGGGCGCCGGGGAGCC
CCAGCCAGGGGCTGCCGACCTACCCCGCTTTCTTTCTCGGAATGCACGGCTTTCTGGATGAGATCTT
CTTCACTTTCTTCAACGTAAGTGGGACAGGGGACGGGACAACCAGCGGCCACACGTGCTGCTGTTCC
TTCTTTATGTACGCGAGCTGCAGTTTCGTGGTGGAAAAGCTCTACTTCCACCTCCACTACAGCCGCGTT
GGGCACTTGGAAAGCGGGTGCCATCTACGTGATCTTATCTACGTGTGGGAGCTGTCTGGGGTCTGGG
ACTCCGCAGTGCGGGGCTTGTTCCTGGGACTATTCTCACTACCCGCTCAATTTATGGGCTCATCACC
CTGATGATTTACCTGGCTGGATATTCCTAGTGTGTACCAGGACCTAATTTCCAACGTGTTGTGGAGGG
TGCAGTACGTACCAGCTAAC

ACGCGTACGCGGCCGCTCGAGCAGAACTCATCTCAGAAGAGGATCTGGCAGCAAATGATATCCTGGATT
ACAAGGATGACGACGATAAGGTTTAA



[View online »](#)

Protein Sequence: >RC227342 representing NM_001136002
 Red=Cloning site Green=Tags(s)

MAGSDVDSEGPARRGGAARRPGAPGGPGSEAAAGCPEPLSTAEAPAESATLPAWMRLYFYGMHGITLDVL
 VSSARRFARSPDLRMLGFSSPYRCLLHSLTHFALEKVVYLQRRCPNAFVFNLLYPSAHVGLQTLAQAL
 LLSLGGGAGVAVAPGALDLALQYVLALYHCQVFLKRFLRLRYGRQRRRQQQQQQQQQQRRRGGALPVPPG
 ARVPTAAGARRRRPRGPRGAGGAPSQGLPDLPRFLFFGMHGFLDEIFFTFFFNVLQGDGTTSGHTSLWS
 FFMYGSCSFVVEKLYFHLLHYSRGWGTWKRVIYVIFIIYWELSWGLGLRTCACSWDYSHYPLNFMGLIT
 LMYLPGWIFLSVYQDLISNVLWRVQYVPAN

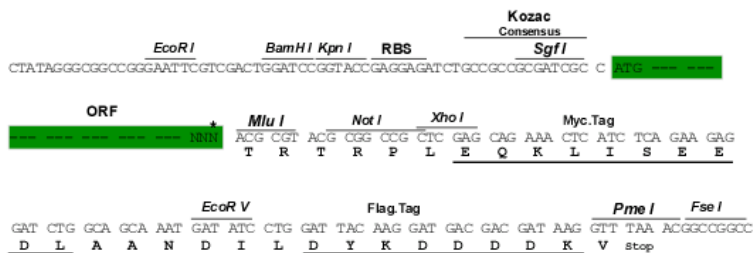
TRTRPLEQKLISEEDLAANDILDYKDDDDKV

Chromatograms: https://cdn.origene.com/chromatograms/mk8104_b01.zip

Restriction Sites: SgfI-MluI

Cloning Scheme:

Cloning sites used for ORF Shuttling:



* The last codon before the Stop codon of the ORF

ACCN: NM_001136002

ORF Size: 1140 bp

OTI Disclaimer: The molecular sequence of this clone aligns with the gene accession number as a point of reference only. However, individual transcript sequences of the same gene can differ through naturally occurring variations (e.g. polymorphisms), each with its own valid existence. This clone is substantially in agreement with the reference, but a complete review of all prevailing variants is recommended prior to use. [More info](#)

OTI Annotation: This clone was engineered to express the complete ORF with an expression tag. Expression varies depending on the nature of the gene.

Components: The ORF clone is ion-exchange column purified and shipped in a 2D barcoded Matrix tube containing 10ug of transfection-ready, dried plasmid DNA (reconstitute with 100 ul of water).

- Reconstitution Method:**
1. Centrifuge at 5,000xg for 5min.
 2. Carefully open the tube and add 100ul of sterile water to dissolve the DNA.
 3. Close the tube and incubate for 10 minutes at room temperature.
 4. Briefly vortex the tube and then do a quick spin (less than 5000xg) to concentrate the liquid at the bottom.
 5. Store the suspended plasmid at -20°C. The DNA is stable for at least one year from date of shipping when stored at -20°C.

RefSeq: [NM_001136002.2](#)

RefSeq Size: 2569 bp

RefSeq ORF: 1143 bp

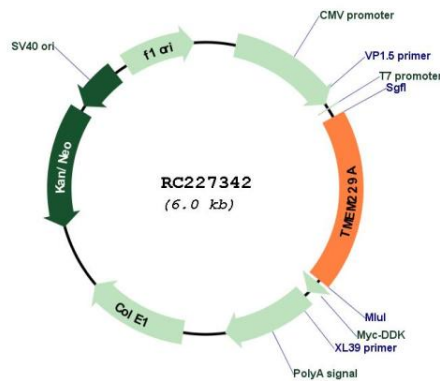
Locus ID: 730130

UniProt ID: [B2RXF0](#)

Cytogenetics: 7q31.32

MW: 42.4 kDa

Product images:



Circular map for RC227342