

## Product datasheet for RC227339

### GRID2IP (NM\_001145118) Human Tagged ORF Clone

#### Product data:

Product Type:	Expression Plasmids
Product Name:	GRID2IP (NM_001145118) Human Tagged ORF Clone
Tag:	Myc-DDK
Symbol:	GRID2IP
Synonyms:	DELPHILIN
Mammalian Cell Selection:	Neomycin
Vector:	pCMV6-Entry (PS100001)
E. coli Selection:	Kanamycin (25 ug/mL)
ORF Nucleotide Sequence:	>RC227339 representing NM_001145118 Red=Cloning site Blue=ORF Green=Tags(s)

TTTTGTAATACGACTCACTATAGGGCGGCCGGAATTCGTCGACTGGATCCGGTACCGAGGAGATCTGCC  
GCC**CGATCGCC**

ATGGCCACCCTGCCACGCCGGCCACGAACCAGGGCTGGCCAGAGGACTTTGGCTCCGGCTAGGTGGCT  
CTGGCCCTGCTTCGTCCTGGAGGTGGCAAGGGGAGCAGCGCGCATGCCGGAGGACTGCGGCCAGGAGA  
CCAGATCTGGAGGTGGAGGGGCTGGCGGTGGCGGTCTGAGCCGCGAGCGCCTCGTGCCCTGGCACGG  
CGCTGCCACGTGTGCCCCAGTCTGGCGGTGCTCCCGCTCCCGACGGTGGCCCGGCCAGGATCCG  
GCCCGCGGCCCGACACAGTCTTGGCGGCCCGCGGTGCGGCCGCGGCTAGCTCTGGCCGTGAGCT  
GCTTCGCCTGGCCGGCCGAAGCGCCGGACGCGGTGCACCGAGAGCGCAGGCGCAAGGCCAAGAGTTC  
AGCCGCAAGGTGGATGAAATCTTGGGGGACCAGCAACTGCCAAGGAGCAGGTGTTTCGCTGCACTGAAGC  
AGTTTGCAGCTGAGCAGCGGGTGGATGATCTGGTGTGGACTCTCACCTGGCGCTGCCCGAGAGGCTG  
CGGGCCACTCCTGGACAACCTCAGGATCTTCATCCCAAGAAGCACCGGGCGCGCTTCGACGAGGTGGT  
TCTCAGGGCTCCTGGCAAGCTGTGCCGCGCACGCCGGGCCAGGGCGCGCAGGACTGCGCCGGAGCC  
GCAGCGAGGAGCGGCCGGAGCGCCTCCTGGTGTCCACGCGCGCCAGCGCCCGCGCGCCCGCCGATGA  
GCCGCCCGCGCAGGGCTCCTTGGTGGTGGCGGCTCGCCGGCCCGGGGGCGCGCAGGACTGTC  
CGAGTCTACAAAGGCAACAAGAGCTTCGGCTTACACTTCGCGGCCACGGGCTGTCTGGATCGAGTCTG  
TCCTGCCTGGGAGCCAGCTGACAATGCTGCCCTCAAGTCAGGTGACCGATCCTCTTCTCAATGGACT  
GGACATGAGGAACTGCTCCACGACAAGGTGGTGTCCATGCTGCAGGGCAGTGGTCCATGCCACGCTG  
GTGGTGGAGGAAGGGCTCGTCCATTTGCCAGTACTCCGATTCTCTGGACTCACCAACCCGCTCGTGG  
CGCTCACCTCCCTGCACTGGGTGGCGGAGATCCTGCCGTCCAGCATCCGGGTCCAAGGGAGGACCTCAG  
CCAGCAGCTGGAGCACCTACTCACCTCCTGAGCGCTATGGGTCTGCCGGCCCTCGAGAGCTTCTTC  
CAGCACAGGAACATCGACACCTCATCGTTGACGTCTACCCTGTGCTGGACACCCCTGCCAAGCAGGTCC  
TGTGGCAGTTCATCTACCAGCTGCTGACCTATGAGGAGCAGGAGCTCTGTGAGGAGAAAATCGCATGCTT  
CCTGGGCTACACGCCATGACAGCAGAGCCGGAGCCTGAGCTGGACTGGAGTCCGAGCCACGCTGAG



CCCCAGCCGCGGAGCTCCCTGCGGGCTTCTCCATGTGCCGCGCAGCCTCCGGTCCCAGGGCCTGGAGG  
CCGGCCTCAGCTGCGGTCCCAGCGAGTGCCTGAGATGCCTTTCCCCTGATCCCAGGCGAGCGCCAGGC  
AGGCGACGGCACGTCCCTCCCTGAGACCCCAACCCCAAGATGATGTCAGCCGTCTATGCAGAGCTTGAG  
TCTCGACTGAACAGCAGCTTCAAAGGGAAGATGGGGACCGTGTCCAAATCCCAGGGCTTCCCCTCCAGGCC  
CCAGCCCAGCAGTACCACAGGGCCAGGACCTGTCCGGCGTCTCATGGCCAGCGAGCAGCTTTGCC  
CTCCCCCTGTACCACCCGCTGTGTTCCGGGGGTCTGGCTCCCCCAGCAGCTCTGAGTCCCACCCCTAC  
GCCAGCTGGACAGCAGAGGGCACCTCCCCACAGCCAGGCCCGGGCCCATCTGCCCCGACAGCCCCC  
CAAGCCCGGACCCACCCGCCCGCCAGCCGAGGAAGCTTTACCTTCTCCCACCTGTGCGAAGCCG  
CGATACTGACCGTTCCTGGACGTGCTGAGCGAGCAGCTGGGCCCGGGTCACCATCGTGGATGATTTT  
CTGACCCCGGAGAACGACTACGAGGAGATGAGCTTCCATGATGACCAGGGCAGCTTCGTAACCAATGAGC  
GGAGCAGCGCCAGCGACTGCATCAGCAGCAGTGAAGAAGGCAGCTCCCTGACCTACTCTCCATCTCTGA  
CCACATCCCCCACCCTGCTCAGCCCCCACCACCGCCACCCCTGCCTTTCATGACGTAAGCCACG  
TCCCGCAGCTCTGATGGTCCCAGGGCCCTGCTCAGGCGCTGGCAAGCCCTCACCAACTCAGCCACC  
CAGTCCCTCCACCACCCACCGCCCTGCCCCACCCGTGCCCTGTGCACCCCCATGCTGTCCGGGG  
CCTGGGCCACCGCGCAGTGAGACCAGCCACATGAGCGTCAAGCGCTTGGGTGGGAACAGTGGAGAAC  
TCAGAAGGCACCATCTGGGGTACGCTCGGGGAAGACTCTGACTACGATAAGCTGAGTGACATGGTGAAT  
ACCTCGACCTGGAGTCCACTTCGGCACCCAGAACTGCTAAACCGGTGCCGGGGCCGGAGCCCTCCG  
GAAGAAGGAGGTGGTGGAGATCCTGTCCATAAGAAGGCCTACAACACCTCCATCCTTTGGCACACCTG  
AAGCTGAGCCCGCGGAGCTGCGCCAGGTGCTGATGAGCATGGAGCCCGGCGCCTGGAGCCCGCACATC  
TCGCGCAGCTGCTGCTTTCGCGCCCGACGCGGACGAGGAGCAGCGCTACCAGGCCTTCGCGAGGCGCC  
CGGCCGCTCAGCGAGCCGACAGTTCGTCCTGCAGATGCTGTCAGTTCGGAATAACAAGACACGCTG  
CGCAGCCTCCACTTCCAGGCCACCCTCCAGGAGAAGACAGAGGAGATCCGAGGCAGCCTTGAATGCTTGC  
GCCAGGCCTCCCTGGAGCTCAAAAACAGTCGGAAGCTCGCCAAGATCCTGGAGTTTGTGTTGCCATGGG  
CAACTATCTCAACGATGGACAGCCAAAACCAACAAGACTACGGGCTTCAAGATCAACTTTCTGACAGAG  
CTGAACCTCCACCAAGACAGTGGATGGGAAGTCCACCTTCTGCACATCCTTGCCAAATCGCTGAGCCAGC  
ACTTCCCTGAACTCCTGGGCTTTGCTCAGGACCTGCCACCGTGCCCTGGCTGCCAAAGTGAACCAACG  
GGCCCTGACCAGTGACCTGGCTGACCTCCATGGCACTATCAGCGAGATACAGGATGCCTGCCAGAGCATT  
TCCCCCTTAGCGAGGACAAGTTTGAATGGTCAATGTCGTCCTTCTGGAGACGGCCAGCCAGCACTTC  
GGGCGCTCGACGGGCTGCAGCGGAGGCCATGGAGGAGCTGGCAAGGCGCTGGCCTTCTTTGGGGAGGA  
TTCCAAGGCCACCACCTCTGAGGCTTTCTCGGCATCTTTCAGAGTTTCATGAGCAAATTCGAGCGAGCG  
CTGAGTGACCTGCAGGCCGGGAGGGCCTGCGCAGCTCCGGGATGGTTTACCCCTGGCCTGG

ACGCGTACGCGGCGCTCGAGCAGAACTCATCTCAGAAGAGGATCTGGCAGCAAATGATATCCTGGATT  
ACAAGGATGACGACGATAAGGTTTAA

**Protein Sequence:** >RC227339 representing NM\_001145118  
 Red=Cloning site Green=Tags(s)

MATTATPATNQWPEDFGFRLLGGSGPCFVLEVAKGSSAHAGGLRPGDQILEVEGLAVGGLSRERLVRLAR  
 RCPRVPPSLGVLPA PDGGPGPGSGPAAPTTLVLRAPRCRGLALGRELLRLAGRKRPAVHRERRRKAQEF  
 SRKVDEILGDQPTAKEQVFAALKQFAAEQQRVDDLWVTLTLALPREACGPLLDNLRIFIPKKHRARFDEVV  
 SQGLLGKLCRRARQAQRLRRSRSEERPERLLVSTRASAPRRPDEPPRRASLLVGGLAGPGGARRTV  
 RYKGNKSGFGLTRGHGPVWIESVLPSPADNAALKSGDRILFLNGLDMRNC SHDKVVSMLQSGAMPTL  
 VVEEGLVPFASDSLSLSPNPSSALTSLQVVAEILPSSIRVQGRFTSQQLEHLLTPPERYGVCRALLESFF  
 QHRNIDTLIVDVYPVLDTPAKQVLWQFIYQLLTYEEQELCQEKIACFLGYTAMTAEPEPELDLESEPTPE  
 PQPRSSLRASSMCRRLRSQGLEAGLSCGPSECEMPLPLIPGERQAGDGTSLPETPNPKMMSAVYAELE  
 SRLNSSFKGKMGTVSKSRASPPGSPAVTTGPRTL SGVSWPSERLLPSPCYHPLCSGGLASPSSESHPY  
 ASLDSSRAPSPQPGGPICPDPPSPDPTRPPSRKLF TFSHPVRSRDTDRFLDVLSEQLGPRVTIVDDF  
 LTPENDYEEMSFHDDQGSFVTNERSSASDCISSSEEGSSLTYSSI SDHIPPPPLSPPPPPPLPFHDAKPS  
 SRSSDGSRGAQALAKPLTQLSHPVPPPPPPPLPPVPCAPPMLSRGLGHRSETSHMSVKRLRWEQVEN  
 SEGTIWGQLGEDSDYDKLSDMVKYLDLELHFGTQKPAKVPVGPPEFRKKEVVEILSHKKAYNTSILLAHL  
 KLSPAELRQVLMSEPRLEPAHLAQLLLFAPDADEEQRYQAFREAPGR LSEPQFVLQMLSVPEYKTRL  
 RSLHFQATLQEKTEEIRGSLECLRQASLELKNRKLAKILEFVLMGNLNDGQPKTNKTTGFKINFLTE  
 LNSTKTVDGKSTFLHILAKLSQHFPELLGFAQDLPTVPLAAKVNQRAL TSDLADLHGTISEIQDACQSI  
 SPSEEDKFAMVMSSFLETAQPALRALDGLQREAMEELGKALAFFGEDSKATTSEAFFGIFAEFMSKFERA  
 LSDLQAGEGLRSSGMVSPLAW

TRTRPLEQKLISEEDLAANDILDYKDDDDKV

**Chromatograms:** [https://cdn.origene.com/chromatograms/mk8032\\_e11.zip](https://cdn.origene.com/chromatograms/mk8032_e11.zip)

**Restriction Sites:** SgfI-MluI

**Cloning Scheme:**

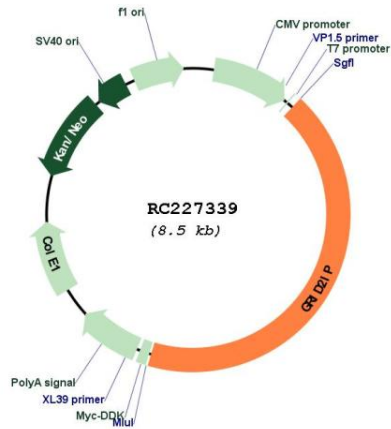


**ACCN:** NM\_001145118

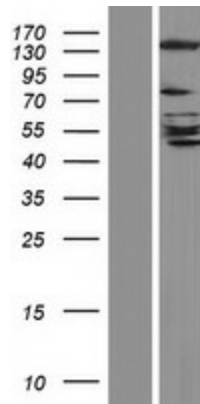
**ORF Size:** 3633 bp

<b>OTI Disclaimer:</b>	The molecular sequence of this clone aligns with the gene accession number as a point of reference only. However, individual transcript sequences of the same gene can differ through naturally occurring variations (e.g. polymorphisms), each with its own valid existence. This clone is substantially in agreement with the reference, but a complete review of all prevailing variants is recommended prior to use. <a href="#">More info</a>
<b>OTI Annotation:</b>	This clone was engineered to express the complete ORF with an expression tag. Expression varies depending on the nature of the gene.
<b>Components:</b>	The ORF clone is ion-exchange column purified and shipped in a 2D barcoded Matrix tube containing 10ug of transfection-ready, dried plasmid DNA (reconstitute with 100 ul of water).
<b>Reconstitution Method:</b>	<ol style="list-style-type: none"><li>1. Centrifuge at 5,000xg for 5min.</li><li>2. Carefully open the tube and add 100ul of sterile water to dissolve the DNA.</li><li>3. Close the tube and incubate for 10 minutes at room temperature.</li><li>4. Briefly vortex the tube and then do a quick spin (less than 5000xg) to concentrate the liquid at the bottom.</li><li>5. Store the suspended plasmid at -20°C. The DNA is stable for at least one year from date of shipping when stored at -20°C.</li></ol>
<b>RefSeq:</b>	<a href="#">NM_001145118.1</a> , <a href="#">NP_001138590.1</a>
<b>RefSeq ORF:</b>	3636 bp
<b>Locus ID:</b>	392862
<b>UniProt ID:</b>	<a href="#">A4D2P6</a>
<b>Cytogenetics:</b>	7p22.1
<b>MW:</b>	132.1 kDa
<b>Gene Summary:</b>	Glutamate receptor delta-2 (GRID2; MIM 602368) is predominantly expressed at parallel fiber-Purkinje cell postsynapses and plays crucial roles in synaptogenesis and synaptic plasticity. GRID2IP1 interacts with GRID2 and may control GRID2 signaling in Purkinje cells (Matsuda et al., 2006 [PubMed 16835239]).[supplied by OMIM, Mar 2008]

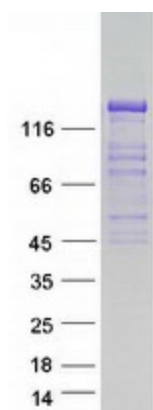
Product images:



Circular map for RC227339



Western blot validation of overexpression lysate (Cat# [LY428702]) using anti-DDK antibody (Cat# [TA50011-100]). Left: Cell lysates from untransfected HEK293T cells; Right: Cell lysates from HEK293T cells transfected with RC227339 using transfection reagent MegaTran 2.0 (Cat# [TT210002]).



Coomassie blue staining of purified GRID2IP protein (Cat# [TP327339]). The protein was produced from HEK293T cells transfected with GRID2IP cDNA clone (Cat# RC227339) using MegaTran 2.0 (Cat# [TT210002]).