

## Product datasheet for **RC227329**

### FCGRT (NM\_001136019) Human Tagged ORF Clone

#### Product data:

**Product Type:** Expression Plasmids  
**Product Name:** FCGRT (NM\_001136019) Human Tagged ORF Clone  
**Tag:** Myc-DDK  
**Symbol:** FCGRT  
**Synonyms:** alpha-chain; FCRN  
**Mammalian Cell Selection:** Neomycin  
**Vector:** pCMV6-Entry (PS100001)  
**E. coli Selection:** Kanamycin (25 ug/mL)  
**ORF Nucleotide Sequence:** >RC227329 representing NM\_001136019  
**Red=Cloning site Blue=ORF Green=Tags(s)**

TTTTGTAATACGACTCACTATAGGGCGGCCGGAATTCGTCGACTGGATCCGGTACCGAGGAGATCTGCC  
GCC**CGATCGCC**

ATGGGGTCCCAGCCCTCAGCCCTGGGCGCTGGGGCTCCTGCTCTTTCTCCTTCTGGGAGCCTGGGCG  
CAGAAAGCCACCTCTCCCTCCTGTACCACCTTACCGGGTGTCTCGCCTGCCCGGGGACTCCTGCCTT  
CTGGGTGCCGGCTGGCTGGGCCCGCAGCAGTACCTGAGCTACAATAGCCTGCGGGGCGAGGCGGAGCCC  
TGTGGAGCTTGGGTCTGGGAAAACCAGGTGTCTGGTATTGGGAGAAAGAGACCACAGATCTGAGGATCA  
AGGAGAAGCTCTTCTGGAAGCTTCAAAGCTTTGGGGGAAAAGTCCCTACACTCTGCAGGGCCTGCT  
GGGCTGTGAAGTGGGCCCTGACAACACCTCGGTGCCACCAGCAAGTTCGCCCTGAACGGCGAGGAGTTC  
ATGAATTCGACCTCAAGCAGGGCACCTGGGGTGGGACTGGCCCAGGGCCCTGGCTATCAGTCAGCGGT  
GGCAGCAGCAGGACAAGGCGGCCAAAGGAGCTCACCTTCTGCTATTCTCCTGCCCGCACCGCCTGCG  
GGAGCACCTGGAGAGGGCCGCGAAACCTGGAGTGGAAGGAGCCCCCTCCATGCGCCTGAAGGCCGA  
CCCAGCAGCCCTGGCTTTTCCGTGCTTACCTGCAGCGCTTCTCCTTCTACCTCCGGAGCTGCAACTTC  
GGTTCCTGCGAATGGGCTGGCCGCTGGCACCGGCCAGGGTACTTCGGCCCCAAGTACCGGATCCTT  
CCACGCCCTCGTCGCTCACTAACAGTCAAAGTGGCGATGAGCACCCTACTGCTGCATTGTGCAGCACGG  
GGCTGGCGCAGCCCCCAGGGTGGAGCTGGAATCTCCAGCAAGTCTCCGTCGTCGTTGGGAATCG  
TCATCGGTGCTTGTACTACTCACGGCAGCGGCTGTAGGAGGACTCTGTTGTGGAGAAGGATGAGGAGTGG  
GCTGCCAGCCCCCTGGATCTCCCTTCGTGGAGACGACCCGGGGTCTCCTGCCACCCAGGGGAGGCC  
CAGGATGCTGATTTGAAGGATGTAATGTGATTCCAGCCACCGCC

**ACGCGT**ACGCGGCCGCTCGAGCAGAACTCATCTCAGAAGAGGATCTGGCAGCAATGATATCCTGGATT  
ACAAGGATGACGACGATAAGGTTAA



[View online »](#)

**Protein Sequence:** >RC227329 representing NM\_001136019  
Red=Cloning site Green=Tags(s)

MGVPRQPWALGLLLFLLPGLGAESHL SLL YHL TAVSSPAPGTPAFWVSGWLGPPQYLSYNSLRGEAEP  
 CGAWVWENQVSWYWEKETTDLR I KEKL FLEAFKALGGKGPYTLQGLLGCELGPDNTSVPTAKFALNGEEF  
 MNFDLKQGTWGGDWPEALAI SQRWQQQDKAANKELTFLLLFSCPHRLREHLERGRGNLEWKEPPSMRLKAR  
 PSSPGFSVLTCSAF SFYPPELQLRFLRNLGAAGTGQDFGPNSDGSFHASSSLTVKSGDEHHYCCIVQHA  
 GLAQLRVELESPAKSSVLVVGIVIGVLLLLTAAAVGGALLWRRMRSGLPAPWISLRGDDTGVL LPTPGEA  
 QDADLKDVNVIPATA

TRTRPLEQKLISEEDLAANDILDYKDDDDKV

**Chromatograms:** [https://cdn.origene.com/chromatograms/mg2565\\_g01.zip](https://cdn.origene.com/chromatograms/mg2565_g01.zip)

**Restriction Sites:** SgfI-MluI

**Cloning Scheme:**



**ACCN:** NM\_001136019

**ORF Size:** 1095 bp

**OTI Disclaimer:** The molecular sequence of this clone aligns with the gene accession number as a point of reference only. However, individual transcript sequences of the same gene can differ through naturally occurring variations (e.g. polymorphisms), each with its own valid existence. This clone is substantially in agreement with the reference, but a complete review of all prevailing variants is recommended prior to use. [More info](#)

**OTI Annotation:** This clone was engineered to express the complete ORF with an expression tag. Expression varies depending on the nature of the gene.

**Components:** The ORF clone is ion-exchange column purified and shipped in a 2D barcoded Matrix tube containing 10ug of transfection-ready, dried plasmid DNA (reconstitute with 100 ul of water).

**Reconstitution Method:**

1. Centrifuge at 5,000xg for 5min.
2. Carefully open the tube and add 100ul of sterile water to dissolve the DNA.
3. Close the tube and incubate for 10 minutes at room temperature.
4. Briefly vortex the tube and then do a quick spin (less than 5000xg) to concentrate the liquid at the bottom.
5. Store the suspended plasmid at -20°C. The DNA is stable for at least one year from date of shipping when stored at -20°C.

**Note:** Plasmids are not sterile. For experiments where strict sterility is required, filtration with 0.22um filter is required.

**RefSeq:** [NM\\_001136019.3](#)

**RefSeq ORF:** 1098 bp

**Locus ID:** 2217

**UniProt ID:** [P55899](#)

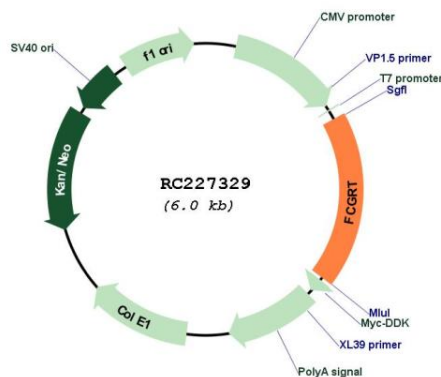
**Cytogenetics:** 19q13.33

**Protein Families:** Transmembrane

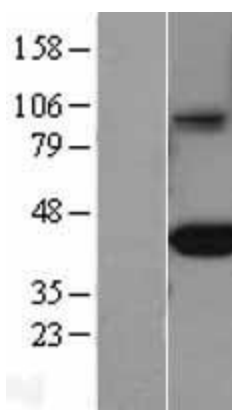
**MW:** 39.6 kDa

**Gene Summary:** This gene encodes a receptor that binds the Fc region of monomeric immunoglobulin G. The encoded protein transfers immunoglobulin G antibodies from mother to fetus across the placenta. This protein also binds immunoglobulin G to protect the antibody from degradation. Alternative splicing results in multiple transcript variants. [provided by RefSeq, Apr 2009]

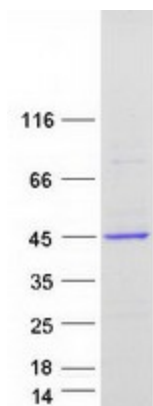
## Product images:



Circular map for RC227329



Western blot validation of overexpression lysate (Cat# [LY427768]) using anti-DDK antibody (Cat# [TA50011-100]). Left: Cell lysates from untransfected HEK293T cells; Right: Cell lysates from HEK293T cells transfected with RC227329 using transfection reagent MegaTran 2.0 (Cat# [TT210002]).



Coomassie blue staining of purified FCGRT protein (Cat# [TP327329]). The protein was produced from HEK293T cells transfected with FCGRT cDNA clone (Cat# RC227329) using MegaTran 2.0 (Cat# [TT210002]).