

Product datasheet for **RC227325**

SORBS2 (NM_001145675) Human Tagged ORF Clone

Product data:

Product Type:	Expression Plasmids
Product Name:	SORBS2 (NM_001145675) Human Tagged ORF Clone
Tag:	Myc-DDK
Symbol:	SORBS2
Synonyms:	ARGBP2; PRO0618
Mammalian Cell Selection:	Neomycin
Vector:	pCMV6-Entry (PS100001)
E. coli Selection:	Kanamycin (25 ug/mL)



[View online »](#)

ORF Nucleotide Sequence:

>RC227325 representing NM_001145675
 Red=Cloning site Blue=ORF Green=Tags(s)

TTTTGTAATACGACTCACTATAGGGCGGCCGGAATTCGTCGACTGGATCCGGTACCGAGGAGATCTGCC
 GCC**CGGATCGCC**

ATGAAAGCAACAACACCTTTGCAGACAGTCGACCGGCCAAGGACTGGTACAAGACGATGTTTAAGCAAA
 TTCACATGGTGCACAAGCCGGATGATGACACAGACATGTATAACTCCTTATACATACAATGCAGGTCT
 GTACAACCCACCCTACAGTGCTCAGTCACACCCTGCTGCAAAGACCCAAACCTACAGACCTCTTTCCAAA
 AGCCACTCCGACAACAGCCCAATGCCTTTAAGGATGCGTCTCCCCAGTGCCTCCCCACATGTTCCAC
 CTCCAGTCCCAGCGCTTCGACCAAGAGATCGGTCTTCAACAGAAAAGCATGACTGGGATCTCCAGACAG
 AAAAGTGGACACAAGAAAATTCGGTCTGAGCCAAGGAGTATTTTGAATATGAACCTGGCAAGTCATCA
 ATTCTTCAGCATGAAAGACCAGCCTCCTGTATCAGTCTCTATAGACAGAAGCCTGAAAGACCCATGA
 GTTCTGCAAGCATGGCCAGTGACTTCAGGAAGCGGAGGAAGAGCGAGCCTGCAGTGGTCCACCACGGGG
 CTTGGGAGATCAAAGTGCAGCAGGACTAGCCCAGGCCGAGTGGACCTCCAGGATCAAGCACCCTCTT
 ACAAAAGTCTTCACTAGCTCTTCTCCTTCTCCCATCAAGAGCAAAAGACCGTGAGTCCCTTAGAAGTT
 ACTCATCCACTTTGACTGACATGGGGAGAAGTGCACCAAGGGAAAAGAGGAACTCCAGAAAAAGAGAA
 ATTGCTGCAAAAAGCTGTTTATGATTTTAAAGGCTCAGACATCTAAGGAGTTGTCATTTAAGAAAAGGAGAT
 ACTGTCTACATCCTCAGGAAAATGATCAAAAATGGTATGAGGGAGAACCACCGGGAGAGTGGGCATCT
 TCCCGATCTACGTAGAGAACTCACACCTCCTGAGAAAGCACAGCCTGCAAGACCACCTCCGCCAGC
 CCAGCCCGGAGAAATCGGAGAAGCTATAGCCAAATACAACCTCAACGCAGACACAATGTGGAGCTGTCA
 CTGAGAAAAGGAGATAGAGTTATTCTTCTTAAAAGAGTTGATCAAACTGGTATGAAGGTAATCCCGAG
 GAACCAACAGACAAGGCATCTTCCCTGTTTCTATGTGGAGTCGTCAAGAAGAACAACAAAAGGTGCTGA
 GGACTACCCTGACCCTCCAATACCCACAGCTATTCTAGTGATAGGATTACAGCTTGAGCTCAAATAAG
 CCACAGCGTCTGTGTTTACTCATGAAAATATTCAAGGTGGGGGGAACCGTTTCAGGCTCTGTAACT
 ATACTCCAGGAATGAAGATGAGCTGGAGCTCAGAGAAAGTGATGTCATTGATGTCATGGAAGGTGTA
 TGACGGCTGGTTGTGGGACCTCAAGAAGAACCAAAATCTTTGGTACTTTCCCGGAACTACGTCAAG
 AGGCTG

ACGCGTACGCGGCCGCTCGAGCAGAAACTCATCTCAGAAGAGGATCTGGCAGCAAATGATATCCTGGATT
 ACAAGGATGACGACGATAAGGTTTAA

Protein Sequence:

>RC227325 representing NM_001145675
 Red=Cloning site Green=Tags(s)

MKATTPQLTVDRPKDWMFKQIHMVHKPDDDDTDMYNTPTYTYNAGLYNPPYSAQSHPAAKTQTYRPLSK
 SHSDNSPNAFKDASSPVPPPHVPPVPLRPRDRSSTEKHDWPPDRKVDTRKFRSEPRSI FEYEPGKSS
 ILQHERPASLYQSSIDRSLERPMSASMSDFRKRKSEPAVGPPRGLGDSASRTSPGRVDLPGSSTTL
 TKSF TSSSPSSRAKDRESRYSSTL TDMGRSAPRERRGTPEKEKLPKAVYDFKAQTSKELSFKKGD
 TVYILRKIDQNWYEGEHHRVGFIPISYVEKLTPEKAQPARPPPAQGEIGEIAKYNFNADTNVELS
 LRKGDRVILLKRVDQNWYEGKIPGTNRQGFIPVSYVEVVKNTKGAEDYDPPIPHSYSSDRIHLSNKK
 PQRPFV THENIQGGGEPFQALYNYTPRNEDELELRESDVIDVMEKCDDGWVFGTSRRTKFFGTFPGNYVK
 RL

TRTRPLEQKLISEEDLAANDILDYKDDDDKV

Chromatograms:

https://cdn.origene.com/chromatograms/mk8063_c02.zip

Restriction Sites:

SgfI-MluI

Cloning Scheme:


ACCN: NM_001145675

ORF Size: 1476 bp

OTI Disclaimer: The molecular sequence of this clone aligns with the gene accession number as a point of reference only. However, individual transcript sequences of the same gene can differ through naturally occurring variations (e.g. polymorphisms), each with its own valid existence. This clone is substantially in agreement with the reference, but a complete review of all prevailing variants is recommended prior to use. [More info](#)

OTI Annotation: This clone was engineered to express the complete ORF with an expression tag. Expression varies depending on the nature of the gene.

Components: The ORF clone is ion-exchange column purified and shipped in a 2D barcoded Matrix tube containing 10ug of transfection-ready, dried plasmid DNA (reconstitute with 100 ul of water).

Reconstitution Method:

1. Centrifuge at 5,000xg for 5min.
2. Carefully open the tube and add 100ul of sterile water to dissolve the DNA.
3. Close the tube and incubate for 10 minutes at room temperature.
4. Briefly vortex the tube and then do a quick spin (less than 5000xg) to concentrate the liquid at the bottom.
5. Store the suspended plasmid at -20°C. The DNA is stable for at least one year from date of shipping when stored at -20°C.

Note: Plasmids are not sterile. For experiments where strict sterility is required, filtration with 0.22um filter is required.

RefSeq: [NM_001145675.2](#)

RefSeq ORF: 1479 bp

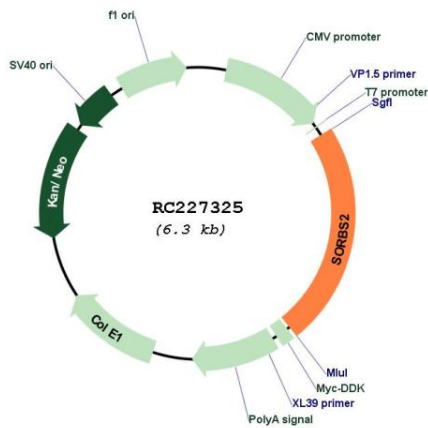
Locus ID: 8470

Cytogenetics: 4q35.1

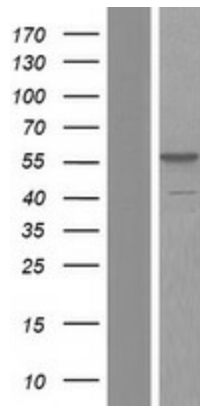
MW: 55.4 kDa

Gene Summary: Arg and c-Abl represent the mammalian members of the Abelson family of non-receptor protein-tyrosine kinases. They interact with the Arg/Abl binding proteins via the SH3 domains present in the carboxy end of the latter group of proteins. This gene encodes the sorbin and SH3 domain containing 2 protein. It has three C-terminal SH3 domains and an N-terminal sorbin homology (SoHo) domain that interacts with lipid raft proteins. The subcellular localization of this protein in epithelial and cardiac muscle cells suggests that it functions as an adapter protein to assemble signaling complexes in stress fibers, and that it is a potential link between Abl family kinases and the actin cytoskeleton. Alternative splicing results in multiple transcript variants encoding different isoforms. [provided by RefSeq, Jul 2008]

Product images:



Circular map for RC227325



Western blot validation of overexpression lysate (Cat# [LY428972]) using anti-DDK antibody (Cat# [TA50011-100]). Left: Cell lysates from untransfected HEK293T cells; Right: Cell lysates from HEK293T cells transfected with RC227325 using transfection reagent MegaTran 2.0 (Cat# [TT210002]).