

Product datasheet for RC227321

GSTM2 (NM_001142368) Human Tagged ORF Clone

Product data:

Product Type: Expression Plasmids
Product Name: GSTM2 (NM_001142368) Human Tagged ORF Clone
Tag: Myc-DDK
Symbol: GSTM2
Synonyms: GST4; GSTM; GSTM2-2; GTHMUS
Mammalian Cell Selection: Neomycin
Vector: pCMV6-Entry (PS100001)
E. coli Selection: Kanamycin (25 ug/mL)
ORF Nucleotide Sequence: >RC227321 representing NM_001142368
 Red=Cloning site Blue=ORF Green=Tags(s)

TTTTGTAATACGACTCACTATAGGGCGGCCGGAATTCGTCGACTGGATCCGGTACCGAGGAGATCTGCC
 GCCCGGATCGCC

ATGCCCATGACTGGGGTACTGGAACATCCGCGGGCTGGCCATTCCATCCGCCTGCTCCTGGAATACA
 CAGACTCAAGCTACGAGGAAAAGAAGTACACGATGGGGGACGCTCCTGATTATGACAGAAGCCAGTGGCT
 GAATGAAAATTCAAGCTGGCCTGGACTTTCCCAATCTGCCCTACTTGATTGATGGGACTACAAGATC
 ACCCAGAGCAACGCCATCTGCGGTACATTGCCGCAAGCACAACCTGTGCGGGGATCAGAAAAGGAGC
 AGATTCGCGAAGACATTTGGAGAACCAGTTTATGGACAGCCGTATGCAGCTGGCCAACTCTGCTATGA
 CCCAGATTTTGGAACTGAAACCAGAATACCTGCAGGCACTCCCTGAAATGCTGAAGCTCTACTCACAG
 TTTCTGGGGAAGCAGCCATGTTTCTTGGGACAAGATCACCTTTGTGGATTTTCATCGCTTATGATGTCC
 TTGAGAGAAACCAAGTATTTGAGCCAGCTGCCTGGATGCCTTCCCAAACCTGAAGGACTTCATCTCCC
 ATTTGAGCATTCC

ACGCGTACGCGGCCGCTCGAGCAGAACTCATCTCAGAAGAGGATCTGGCAGCAAATGATATCCTGGATT
 ACAAGGATGACGACGATAAGGTTTAA

Protein Sequence: >RC227321 representing NM_001142368
 Red=Cloning site Green=Tags(s)

MPMTLGYWNIRGLAHSIRLLLEYTDSSYEEKKYTMGDAPDYDRSQWLNEKFKLGLDFPNLPYLIDGTHKI
 TQSNAILRYIARKHNLGSESEKEQIREIDLENQFMDSRMLAKLCYDPDFEKLKPEYLQALPEMLKLYSQ
 FLGKQPFVLDGKITFVDFIAYDVLERNQVFEPSCLDAPNLKDFISRFEHS

TRTRPLEQKLISEEDLAANDILDYKDDDDKV



[View online »](#)

Chromatograms: https://cdn.origene.com/chromatograms/ja1449_c01.zip

Restriction Sites: SgfI-MluI

Cloning Scheme:



ACCN: NM_001142368

ORF Size: 573 bp

OTI Disclaimer: The molecular sequence of this clone aligns with the gene accession number as a point of reference only. However, individual transcript sequences of the same gene can differ through naturally occurring variations (e.g. polymorphisms), each with its own valid existence. This clone is substantially in agreement with the reference, but a complete review of all prevailing variants is recommended prior to use. [More info](#)

OTI Annotation: This clone was engineered to express the complete ORF with an expression tag. Expression varies depending on the nature of the gene.

Components: The ORF clone is ion-exchange column purified and shipped in a 2D barcoded Matrix tube containing 10ug of transfection-ready, dried plasmid DNA (reconstitute with 100 ul of water).

Reconstitution Method:

1. Centrifuge at 5,000xg for 5min.
2. Carefully open the tube and add 100ul of sterile water to dissolve the DNA.
3. Close the tube and incubate for 10 minutes at room temperature.
4. Briefly vortex the tube and then do a quick spin (less than 5000xg) to concentrate the liquid at the bottom.
5. Store the suspended plasmid at -20°C. The DNA is stable for at least one year from date of shipping when stored at -20°C.

RefSeq: [NM_001142368.1](#), [NP_001135840.1](#)

RefSeq ORF: 576 bp

Locus ID: 2946

UniProt ID: [P28161](#)

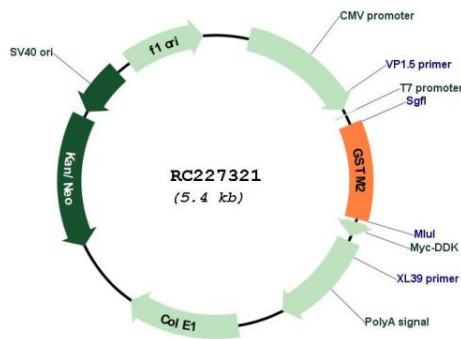
Cytogenetics: 1p13.3

Protein Pathways: Drug metabolism - cytochrome P450, Glutathione metabolism, Metabolism of xenobiotics by cytochrome P450

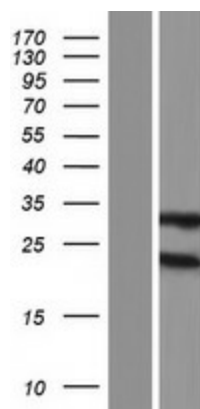
MW: 22.5 kDa

Gene Summary: Cytosolic and membrane-bound forms of glutathione S-transferase are encoded by two distinct supergene families. At present, eight distinct classes of the soluble cytoplasmic mammalian glutathione S-transferases have been identified: alpha, kappa, mu, omega, pi, sigma, theta and zeta. This gene encodes a glutathione S-transferase that belongs to the mu class. The mu class of enzymes functions in the detoxification of electrophilic compounds, including carcinogens, therapeutic drugs, environmental toxins and products of oxidative stress, by conjugation with glutathione. The genes encoding the mu class of enzymes are organized in a gene cluster on chromosome 1p13.3 and are known to be highly polymorphic. These genetic variations can change an individual's susceptibility to carcinogens and toxins as well as affect the toxicity and efficacy of certain drugs. [provided by RefSeq, Jul 2008]

Product images:



Circular map for RC227321



Western blot validation of overexpression lysate (Cat# [LY428058]) using anti-DDK antibody (Cat# [TA50011-100]). Left: Cell lysates from untransfected HEK293T cells; Right: Cell lysates from HEK293T cells transfected with RC227321 using transfection reagent MegaTran 2.0 (Cat# [TT210002]).