

## Product datasheet for **RC227319**

### **TTC39A (NM\_001144832) Human Tagged ORF Clone**

#### **Product data:**

Product Type:	Expression Plasmids
Product Name:	TTC39A (NM_001144832) Human Tagged ORF Clone
Tag:	Myc-DDK
Symbol:	TTC39A
Synonyms:	C1orf34; DEME-6
Mammalian Cell Selection:	Neomycin
Vector:	pCMV6-Entry (PS100001)
E. coli Selection:	Kanamycin (25 ug/mL)



[View online »](#)

**ORF Nucleotide Sequence:**

>RC227319 representing NM\_001144832  
 Red=Cloning site Blue=ORF Green=Tags(s)

TTTTGTAATACGACTCACTATAGGGCGGCCGGAATTCGTCGACTGGATCCGGTACCGAGGAGATCTGCC  
 GCC**CGCATCGCC**

ATGGCCTTCTGACCACCTGGAAGGAGGCGGCCTCCGGAAAAGCGACCGCAGGACTCCTGAGAGCAGCC  
 TCCATGAGGCCCTGGACCAGTGCATGACCGCCCTGGACCTCTCCTCACCAACCAGTTCTCAGAAGCACT  
 CAGCTACCTCAAGCCCAGAACCAAGGAAAGCATGTACCACTCACTGACATATGCCACCATCCTGGAGATG  
 CAGGCCATGATGACCTTTGACCCTCAGGACATCCTGCTTGCCGGCAACATGATGAAGGAGGCACAGATGC  
 TGTGTCAGAGGCACCGGAGGAAGTCTTCTGTAACAGATTCTTCAGCAGCCTGGTGAACCGCCCCACGCT  
 GGGCCAATTCACTGAAGAGGAAATCCACGCTGAGGTCTGCTATGCAGAGTGCCTGCTGCAGCGAGCAGCC  
 CTGACCTTCTGCAGGACGAGAATGGTGAAGTTCATCAAAGGCGGCATCAAAGTTCGAAACAGCTACC  
 AGACCTACAAGGAGCTGGACAGCCTTGTTCAGTCTCACAACTGCAAGGGTGAAGAACCCCGCACTT  
 TGAAGGAGGAGTGAAGCTTGGTGTAGGGCCTTCAACCTGACACTGTCCATGCTTCTACTAGGATCCTG  
 AGGCTGTTGGAGTTTGTGGGGTTTTTCAGGAAACAAGACTATGGGCTGCTGCAGCTGGAGGAGGGAGCGT  
 CAGGGCACAGCTTCCGCTCTGTGCTCTGTGTCATGCTCCTGCTGTGCTACCAACACCTTCTCACCTTCGT  
 GCTCGGTACTGGGAACGTCAACATCGAGGAGGCCGAGAAGCTCTTGAAGCCCTACCTGAACCGGTACCTT  
 AAGGGTGCCATCTTCTGTTCTTTGACAGGGAGGATTGAAGTCATTAAGGCAACATTGATGCAGCCATCC  
 GCGTTCGAGGAGTGTGTGAGGCCACGACGACTGGAAGCAGTTCCACCACATGTGCTACTGGGAGCT  
 GATGTGGTGTTCACCTACAAGGCCAGTGAAGATGTCTACTTCTACGCCGACTGCTCAGCAAGGAG  
 AACTGCTGGTCCAAGGCCACCTACATTTACATGAAGGCCGCTACCTCAGCATGTTTGGGAAGGAGGACC  
 ACAAGCCGTTCCGGGACGACGAAGTGAATTATTTGAGCTGTGCCAGGCCTGAAGCTCAAGATTGCTGG  
 GAAATCTCTACCCACAGAGAAGTTTGCCATCCGGAAGTCCCGGCGCTACTTCTCCTCCAACCTATCTCG  
 CTGCCAGTGCCTGCTCTGAAATGATGTACATCTGGAACGGCTACGCCGTGATTGGGAAGCAGCCGAAAC  
 TCACGGATGGGATACTTGAGATTACTAAGGCTGAAGAGATGCTGGAGAAAGGCCAGAGAACGAGTA  
 CTCAGTGGATGACGAGTCTTGGTGAATTGTTGAAAGGCTGTGCTGAAATACCTGGGCCGTGCCAG  
 GAGGCCGAGGAGAAATTTAGGAGCATCTGCCAATGAAAGAAGATTAATATGACCACTACTTGATCC  
 CAAACGCCCTGCTGGAGCTGGCCCTGCTGCTTATGGAGCAAGACAGAAACGAAGAGGCCATCAAATTTT  
 GGAATCTGCCAAGCAAACACTACAAGAATTACTCCATGGAGTCAAGGACACACTTTCGAATCCAGGCAGCC  
 AACTCCAAGCCAAGTCTTCCCTAGAGAACAGCAGCAGATCCATGGTCTCATCAGTGCCTTG

**ACGCGT**ACGCGGCCGCTCGAGCAGAAACTCATCTCAGAAGAGGATCTGGCAGCAAATGATATCCTGGATT  
 ACAAGGATGACGACGATAAGGTTTAA

**Protein Sequence:**

>RC227319 representing NM\_001144832  
 Red=Cloning site Green=Tags(s)

MAFLTTWKEAASGKSDRRTPESSLHEALDQCMTALDLFLTNQFSEALSYLKPRTKESMYHSLTYATILEM  
 QAMMTFDPQDILLAGNMKEAQLCQRHRRKSSVTDSSFSLVNRPTLGQFTEEEIHAIEVCYAECLLQRAA  
 LTFLQDENMVSFIKGGIKVRNSYQTYKELDSLQSSQYCKGENHPHFEGGVKLGVGAFNLSMLPTRIL  
 RLLEFVGFSGNKDYGLLQLEEGASGHSFRSVLCVMLLLCYHTFLTFVLGTGNVNIIEAEKLLKPYLNRY  
 KGAIFFAGRIEVIKGNIDAAIRRFEECEAQQHWKQFHMCYWELMWCFTYKQWKMSYFYADLLSKE  
 NCWSKATYIYMKAAYLSMFGKEDHKPFGDDEVELFRAVPLKLLIAGKSLPTEKFAIRKSRRYFSSNPIS  
 LPVPALEMMYIWNKYAVIGKQPKLTDGILEIITKAEEMLEKGPENEYSVDDECLVKLLKGLCLKYLGRVQ  
 EAEENFRSISANEKKIKYDHYLIPNALLELALLLMEQDRNEEAIKLLLESKQNYKNYSMESRTHFRIQAA  
 TLQAKSSLENSRSMVSSVSL

**TR**TRPLEQKLISEEDLAANDILDYKDDDDKV

**Chromatograms:**

[https://cdn.origene.com/chromatograms/mk8032\\_e02.zip](https://cdn.origene.com/chromatograms/mk8032_e02.zip)

**Restriction Sites:**

Sgfl-Mlul

**Cloning Scheme:**


**ACCN:** NM\_001144832

**ORF Size:** 1743 bp

**OTI Disclaimer:** The molecular sequence of this clone aligns with the gene accession number as a point of reference only. However, individual transcript sequences of the same gene can differ through naturally occurring variations (e.g. polymorphisms), each with its own valid existence. This clone is substantially in agreement with the reference, but a complete review of all prevailing variants is recommended prior to use. [More info](#)

**OTI Annotation:** This clone was engineered to express the complete ORF with an expression tag. Expression varies depending on the nature of the gene.

**Components:** The ORF clone is ion-exchange column purified and shipped in a 2D barcoded Matrix tube containing 10ug of transfection-ready, dried plasmid DNA (reconstitute with 100 ul of water).

- Reconstitution Method:**
1. Centrifuge at 5,000xg for 5min.
  2. Carefully open the tube and add 100ul of sterile water to dissolve the DNA.
  3. Close the tube and incubate for 10 minutes at room temperature.
  4. Briefly vortex the tube and then do a quick spin (less than 5000xg) to concentrate the liquid at the bottom.
  5. Store the suspended plasmid at -20°C. The DNA is stable for at least one year from date of shipping when stored at -20°C.

**RefSeq:** [NM\\_001144832.2](#), [NP\\_001138304.1](#)

**RefSeq ORF:** 1746 bp

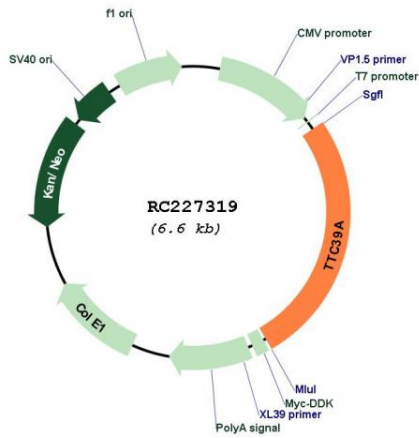
**Locus ID:** 22996

**UniProt ID:** [Q5SRH9](#)

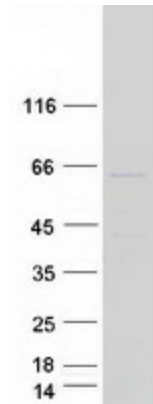
**Cytogenetics:** 1p32.3

**MW:** 66.4 kDa

Product images:



Circular map for RC227319



Coomassie blue staining of purified TTC39A protein (Cat# [TP327319]). The protein was produced from HEK293T cells transfected with TTC39A cDNA clone (Cat# RC227319) using MegaTran 2.0 (Cat# [TT210002]).