

Product datasheet for **RC227312**

ZBTB22 (NM_001145338) Human Tagged ORF Clone

Product data:

Product Type:	Expression Plasmids
Product Name:	ZBTB22 (NM_001145338) Human Tagged ORF Clone
Tag:	Myc-DDK
Symbol:	ZBTB22
Synonyms:	BING1; fru; fruitless; ZBTB22A; ZNF297; ZNF297A
Mammalian Cell Selection:	Neomycin
Vector:	pCMV6-Entry (PS100001)
E. coli Selection:	Kanamycin (25 ug/mL)



[View online »](#)

ORF Nucleotide Sequence:

>RC227312 ORF sequence
 Red=Cloning site Blue=ORF Green=Tags(s)

TTTTGTAATACGACTCACTATAGGGCGGCCGGAATTCGTCGACTGGATCCGGTACCGAGGAGATCTGCC
 GCCGCGATCGCC

ATGGAGCCATCTCCTCTGTCTCCAGTGGGGCAGCACTTCCCCTGCCGCTGTCGCTGGCTCCGCCCCAC
 TACCCCTGCCAGCAGCTGCAGTGGTACATGTGTCTTCCCTGAGGTGACCAGTGCCCTCTTGAGTCCCT
 CAATCAGCAGCGTCTGCAGGGCCAGCTCTGCGATGTATCTATCAGAGTGCAGGGCCGGGAGTTCCGGGT
 CATCGGGCTGTCTGGCTGCCTCTCCCCTTACTTCCATGATCAGGTCTACTCAAAGGCATGACCTCCA
 TCTCGTGTCCAGTGTATGGACCCAGGCGCCTTTGAGACTGTCTAGCCTCCGTTACTGCGCCCT
 CAGCATGGCTGTCTGACATTGTCAACTTCTTACAGTGGGTCTGTGCTCCAAATGTGGCACATTGTG
 GACAAGTGCAGTAACTACTCCGAGAAGGCCGGGCTCAGCTACCACCACCATCACTACTGCTGCAGCCA
 CCTCTGCACTGTCCCTGGTGTGGGGTCCATCCGGGAGTGGGGCACTGTGGCCCTGTACCATGGG
 CTCTGCGCGCTCCATGCCTCCAGCCGGCCAGTGAAGAATCAATCTCCAGCAGCAGCAACTACTTCAGC
 CCCAGGGAGTCCACTGATTTCTCATCTTCTCCCAAGAGGCATTTGCAGCTTCTGCAGTGGGCAGTGGGG
 AGCGTCGAGGAGGTGGCCCTGTATCCAGCCCTGTCTGTTGGCAGTGGAGGGGCCACATCTGAAAGCT
 GCTGCTGGAGGCAGATGAGCTGTGCGATGATGGTGGGGATGGGAGGGGGCAGTGGTTCTGGGGCTGGG
 CTCCGGAGACCCACCTACACACCCCTAGCATCATGCCACAGAAACACTGGGTATACGTGAAGCGAGGTG
 GTAATTGCCAGCGCCAGCACCCCTGGTCCCCAAGACCAGATCTGGAGGAGGAAGAGGAGGAGGAAGA
 TCTGGTGTGACCTGTGAGGATGATGAAGATGAAGAACTAGGGGTAGCTCCAGGGTCCAGTGGGGGA
 GGGCTGAGGCTACCCTCAGCATAAGTGTGTCCTACCCTGAGTGAAGCCAGACAAGGGGGAGGAGC
 AGGTCAACTTCTGTGAGTCTCCAATGACTTTGGCCATATGAGGGTGGGGTCTGTGGCAGTCTTGA
 TGAATCAGGGGGCCAACTCCCTTCTTCTATGCCCCCTCCACCCCTCCTGACCGCTCCTTCCCTTGGAC
 ATGCAGGGCAACCAGATCCTGGTCTTCCCGTCGTCGTTCTCATCTCATCCTCACAGGCTCCTGGCCAAC
 CACCAGGGAACCAAGCAGAACACGGGGCAGTGACCGTGGGGGGCACGTCGGTGGGGAGCCTGGGTGTGCC
 GGGTAGCGTTGGTGGGGTCCCTGGAGGGACTGGCAGTGGGGACGGGAATAAGATCTTCTGTGCCATTGT
 GGGAAAGCCTTCTCCACAAGAGCATGCGGGACCGGCACGTGAACATGCACCTCAATCTGCGGCCGTTTG
 ACTGCCCCGTGTGCAACAAAAGTTCAAGATGAAGCACCATCTGACTGAGCAGATGAAGACGCACACAGG
 TCTCAAGCCCTACGAGTGCAGGAGTCTGCGCCAAGAAGTTCATGTGGCGAGACAGTTCATGCGCCACCGA
 GGACACTGTGAGCGCCGGCACCCCTGGGCGGGTTCGGGGCCGTACCTGGGCCTGGGACTCCACGGGGC
 CATCCTTGCCGTCCAAGAGAGAGTCTCCCGGAGTGGGCGGGGGCAGCGGGCAGCAAGCGAGTGCAGCCAC
 GCCCCCGTCCAGCAGACGTGTCTGGTCCCACCCAGAGTCCACAAGTGGAGATGGGCTTCGGTGGAGGT
 GGAGGAGCAAAC

ACGCGTACGCGGCCGCTCGAGCAGAACTCATCTCAGAAGAGGATCTGGCAGCAAATGATATCCTGGATT
 ACAAGGATGACGACGATAAGGTTTAA

Protein Sequence: >RC227312 protein sequence
Red=Cloning site Green=Tags(s)

MEPSPLSPSGAALPLPLSLAPPLPLPAAAVVHVSFPEVTSALLESLNQQRLQGQLCDVSIQVQGREFRA
 HRAVLAASSPYFHDQVLLKGMTSISLPSVMDPGAFETVLASAYTGRLSMAAADIVNFLTVGSVLQMWIIV
 DKCTELLREGRASATTTITAAAATSVTVPGAGVPSGGTVPATMGSARSHASSRAENQSPSSSNYFS
 PRESTDFSSSSQEAFSAASAVGSGERRGGPVFPAPVVGSGGATSGKLLLEADELCDDGGDGRGAVVPGAG
 LRRPTYTPPSIMPQKHVVYVYKRGNCPPAPLVPQDPDLEEEEEEDLVLTCEDEDEELGGSSRPVGG
 GPEATLSISDVRTLSEPPDKGEEQVNFCESSNDFGPYEGGGPVAGLDDSGGPTPSSYAPSHPPRLLPLD
 MQGNQILVFPSSSSSSSQAPGQPPGNQAEHGAVTVGGTSVGS LGVPGSVGGVPGGTGSGDGNKIFLCHC
 GKAFSHKSMRDRHVNMLNLRPFDPCVCKKFKMKHHLTEHMKHTHTGLKPYECGCAKFMWRDSFMRHR
 GHCERRHRLGGVGAVPGPTPTGPSLPSKRESPGVGGSGDEASAATPPSSRRVWSPRVHVKVEMGFGGG
 GGAN

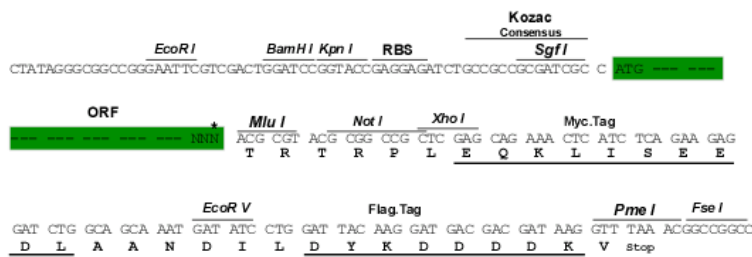
TRTRPLEQKLISEEDLANDILDYKDDDDKV

Chromatograms: https://cdn.origene.com/chromatograms/mk6310_g08.zip

Restriction Sites: SgfI-MluI

Cloning Scheme:

Cloning sites used for ORF Shuttling:



* The last codon before the Stop codon of the ORF

ACCN: NM_001145338

ORF Size: 1902 bp

OTI Disclaimer: The molecular sequence of this clone aligns with the gene accession number as a point of reference only. However, individual transcript sequences of the same gene can differ through naturally occurring variations (e.g. polymorphisms), each with its own valid existence. This clone is substantially in agreement with the reference, but a complete review of all prevailing variants is recommended prior to use. [More info](#)

OTI Annotation: This clone was engineered to express the complete ORF with an expression tag. Expression varies depending on the nature of the gene.

Components: The ORF clone is ion-exchange column purified and shipped in a 2D barcoded Matrix tube containing 10ug of transfection-ready, dried plasmid DNA (reconstitute with 100 ul of water).

Reconstitution Method:

1. Centrifuge at 5,000xg for 5min.
2. Carefully open the tube and add 100ul of sterile water to dissolve the DNA.
3. Close the tube and incubate for 10 minutes at room temperature.
4. Briefly vortex the tube and then do a quick spin (less than 5000xg) to concentrate the liquid at the bottom.
5. Store the suspended plasmid at -20°C. The DNA is stable for at least one year from date of shipping when stored at -20°C.

RefSeq: [NM_001145338.1](#), [NP_001138810.1](#)

RefSeq Size: 2663 bp

RefSeq ORF: 1905 bp

Locus ID: 9278

UniProt ID: [O15209](#)

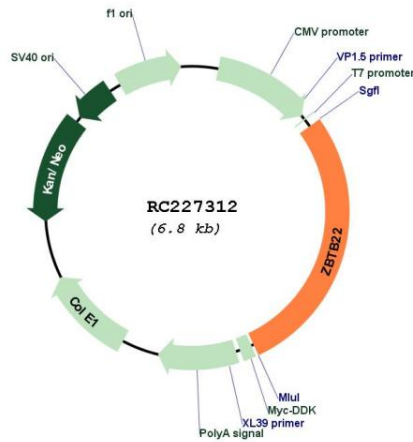
Cytogenetics: 6p21.32

Protein Families: Transcription Factors

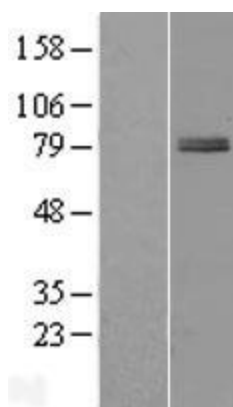
MW: 65.6 kDa

Gene Summary: May be involved in transcriptional regulation.[UniProtKB/Swiss-Prot Function]

Product images:



Circular map for RC227312



Western blot validation of overexpression lysate (Cat# [LY428827]) using anti-DDK antibody (Cat# [TA50011-100]). Left: Cell lysates from untransfected HEK293T cells; Right: Cell lysates from HEK293T cells transfected with RC227312 using transfection reagent MegaTran 2.0 (Cat# [TT210002]).