

## Product datasheet for **RC227291**

### TCHP (NM\_001143852) Human Tagged ORF Clone

#### Product data:

Product Type:	Expression Plasmids
Product Name:	TCHP (NM_001143852) Human Tagged ORF Clone
Tag:	Myc-DDK
Symbol:	TCHP
Synonyms:	TpMs
Mammalian Cell Selection:	Neomycin
Vector:	pCMV6-Entry (PS100001)
E. coli Selection:	Kanamycin (25 ug/mL)



[View online »](#)

**ORF Nucleotide Sequence:**

>RC227291 ORF sequence  
 Red=Cloning site Blue=ORF Green=Tags(s)

TTTTGTAATACGACTCACTATAGGGCGGCCGGAATTCGTCGACTGGATCCGGTACCGAGGAGATCTGCC  
 GCC**GCGATCGCC**

ATGGCGCTCCCGACGCTGCCGTCTACTGGTGCAGCCAGCAGCGCCTGAATCAGCAGCTAGCAGCAGCAGC  
 GAGAGCAGGAGGCCGGCTTCGGCAGCAGTGGGAGCAGAACAGCCGTTACTTCAGGATGTCTGACATCTG  
 CAGCTCCAAACAGGCAGAAATGGAGCTCTAAAACCTCTACCAGCGGAGCATGCATGCCTATCAGCGGGAG  
 AAGATGAAGGAGGAGAAGAGGAGGAGTCTGGAGGCCGACGGGAAAAGCTCAGGCAGCTCATGCAGGAGG  
 AGCAGGACCTGTGGCCAGAGAAGTGGAGGAGCTGAGGCTGAGCATGAACTTGCAGGAAAAGAAGAATCCG  
 GGAGCAGCAGGGAAAGCTGAAATCAGCCAAAGAAGAGCAGAGGAAACTGATTGCTGAACAACTTTGTAC  
 GAACACTGGAAAAGAACAACCCGAACTTCGAGAGATGGAGCTGGACCTTACCAGAAGCATGTCGTAA  
 ACTTTGGGAAATGCAGAAAAGAAGAAAAAACAGCAAGAAGCCACCGCAGAGCAAGAGAACAACCGGTA  
 TGAATGAATATGAAAGGGCCGAAGGGAGGCGCTAGAAAGGATGAAAGCTGAAGAGGAGAGGAGGCGAG  
 CTGGAGGACAAGCTCCAGGCCGAGGCACTGCTGCAACAGATGGAGGAGCTGAAGCTGAAGGAGGTGGAGG  
 CGACAAACTAAAGAAGGAGCAGGAGAATCTGTTGAAGCAGCGGTGGGAGCTAGAGAGGCTGGAGGAAGA  
 GCGAAAGCAGATGGAAGCCTTCCGGCAGAAGGCAGAGCTGGGCGCTTTCTTGAGACATCAGTATAACGCT  
 CAACTCAGCAGACGCACACAGCAGATCCAAGAGGAGCTGGAGGCAGACAGGCGGATCCTGCAGGCCCTCC  
 TCGAGAAGGAGGACGAGAGCCAGCGCTCCACCTGGCCAGGCGGGAGCAGGTGATGGCCGATGTGGCCTG  
 GATGAAGCAGGCCATTGAGGAGCAGCTGCAGCTGGAGCGGGCGGGAGGAGCTGCAGATGCTGCTG  
 AGGGAGGAGGCCAAGGAGATGTGGAAAAGAGAGAGGAGGAGTGGGCCGAGAGCGCAGCGCACGGGACA  
 GACTGATGAGCGAGGTTCTGACAGGGAGACAACAGCAAAATACAAGAGAAGATTGAGCAGAACCAGGGGACA  
 ACAAGGAAATCCCTGAAACACAGGGAGCAACTTATTGAAATCTTGAAGGAGTGAAGAGATTGGCTCGT  
 CCGCAGAAAAGAGGAGTGAAGAGCTGAAATCGGCCAGGAAGCAGGAGCTGGAAGCCAGGTTGCAGAGC  
 GCCGGCTGCAGGCATGGGAAGCAGACCAGCAGGAGGAGGAAGAGGAGGAGGCCCGCGGGTTCGAGCA  
 GCTCTCAGATGCCCTGCTGCAGCAGGAGGCGGAGACTATGGTGAGCAGGGCTACCGGCCTAAGCCTTAC  
 GGACATCCAAAATTGCTTGAAC

**ACGCGT**ACGCGGCCGCTCGAGCAGAACTCATCTCAGAAGAGGATCTGGCAGCAATGATATCCTGGATT  
 ACAAGGATGACGACGATAAGGTTTAA

**Protein Sequence:**

>RC227291 protein sequence  
 Red=Cloning site Green=Tags(s)

MALPTLPSYWCSQQLRNQQLARQREQEARLRQQWEQNSRYFRMSDICSSKQAEWSSKTSYQRSMHAYQRE  
 KMKEEKRRSLEARREKLRLMQEEQDLLARELEELRLSMNLQERRIREQHGLKLSAKEEQRKLIAEQLLY  
 EHWKKNPKLREMELDLHQKHVNSWEMQKEEKQEQEATAEQENKRYENEYERARREALERMKAEEERRQ  
 LEDKLQAEALLQMEELKLKEVEATKLKKEQENLLKQRWELERLEEERKQMEAFRQKAEGRFLRHQYNA  
 QLSRRTQQIQEELADRILQALLEKEDESQRLHLARREQVMADVAVMKQAIIEQLQLERAREAELQMLL  
 REEAKEMWEKREAEWARERSARDRLMSEVL TGRQQIQEKIEQNRRAQEE SLKHREQLIRNLEEVELAR  
 REKEESEKLSARKQELEAQAERRLQAWEDQQEEEEEEARRVEQLSDALLQEQEATMAEQGYRPKPY  
 GHPKIAWN

**TR**TRPLEQKLI SEEDLAANDILDYKDDDDKV

**Chromatograms:**

[https://cdn.origene.com/chromatograms/mk6675\\_d03.zip](https://cdn.origene.com/chromatograms/mk6675_d03.zip)

**Restriction Sites:**

SgfI-MluI

**Cloning Scheme:**


**ACCN:** NM\_001143852

**ORF Size:** 1494 bp

**OTI Disclaimer:** The molecular sequence of this clone aligns with the gene accession number as a point of reference only. However, individual transcript sequences of the same gene can differ through naturally occurring variations (e.g. polymorphisms), each with its own valid existence. This clone is substantially in agreement with the reference, but a complete review of all prevailing variants is recommended prior to use. [More info](#)

**OTI Annotation:** This clone was engineered to express the complete ORF with an expression tag. Expression varies depending on the nature of the gene.

**Components:** The ORF clone is ion-exchange column purified and shipped in a 2D barcoded Matrix tube containing 10ug of transfection-ready, dried plasmid DNA (reconstitute with 100 ul of water).

- Reconstitution Method:**
1. Centrifuge at 5,000xg for 5min.
  2. Carefully open the tube and add 100ul of sterile water to dissolve the DNA.
  3. Close the tube and incubate for 10 minutes at room temperature.
  4. Briefly vortex the tube and then do a quick spin (less than 5000xg) to concentrate the liquid at the bottom.
  5. Store the suspended plasmid at -20°C. The DNA is stable for at least one year from date of shipping when stored at -20°C.

**RefSeq:** [NM\\_001143852.2](#)

**RefSeq Size:** 3111 bp

**RefSeq ORF:** 1497 bp

**Locus ID:** 84260

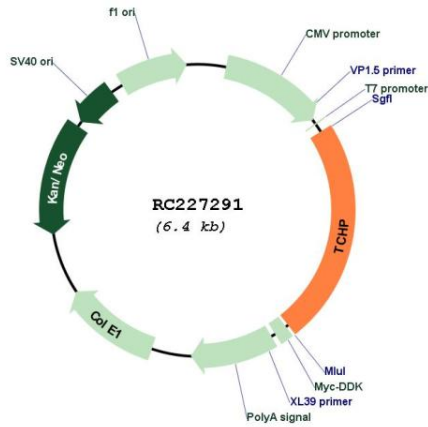
**UniProt ID:** [Q9BT92](#)

**Cytogenetics:** 12q24.11

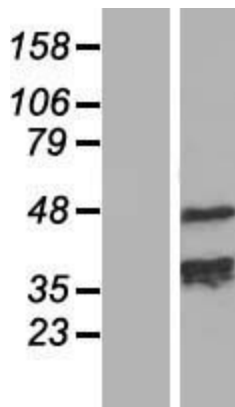
MW: 61.1 kDa

Gene Summary: Tumor suppressor which has the ability to inhibit cell growth and be pro-apoptotic during cell stress. Inhibits cell growth in bladder and prostate cancer cells by a down-regulation of HSPB1 by inhibiting its phosphorylation. May act as a 'capping' or 'branching' protein for keratin filaments in the cell periphery. May regulate K8/K18 filament and desmosome organization mainly at the apical or peripheral regions of simple epithelial cells (PubMed:15731013, PubMed:18931701). Is a negative regulator of ciliogenesis (PubMed:25270598).[UniProtKB/Swiss-Prot Function]

Product images:



Circular map for RC227291



Western blot validation of overexpression lysate (Cat# [LY428388]) using anti-DDK antibody (Cat# [TA50011-100]). Left: Cell lysates from untransfected HEK293T cells; Right: Cell lysates from HEK293T cells transfected with RC227291 using transfection reagent MegaTran 2.0 (Cat# [TT210002]).