

Product datasheet for RC227286

PPT1 (NM_001142604) Human Tagged ORF Clone

Product data:

Product Type: Expression Plasmids
Product Name: PPT1 (NM_001142604) Human Tagged ORF Clone
Tag: Myc-DDK
Symbol: PPT1
Synonyms: CLN1; INCL; PPT
Mammalian Cell Selection: Neomycin
Vector: pCMV6-Entry (PS100001)
E. coli Selection: Kanamycin (25 ug/mL)
ORF Nucleotide Sequence: >RC227286 representing NM_001142604
 Red=Cloning site Blue=ORF Green=Tags(s)

TTTTGTAATACGACTCACTATAGGGCGCCGGGAATTCGTCGACTGGATCCGGTACCGAGGAGATCTGCC
 GCC**CGATCGCC**

ATGGCGTCGCCCGGCTGCCTGTGGCTCTTGGCTGTGGCTCTCCTGCCATGGACCTGCGCTTCTCGGGCGC
 TGCAGCATCTGGACCCGCGCGCCGCTGCCGTTGGTGATCTGGCATGGGATGGGTGTTTTGGACTCCC
 TCGATGCCAGGAGAGACTCTCACATCTGTGACTTCATCGAAAAACTGAATGCTGGGGCGTACTCC
 AAAGTTGTCAGGAACGCCTCGTCAAGCCGAATACTGGCATGACCCATAAAGGAGGATGTGTATCGA
 ACCACAGCATCTTCTTGGCAGATATAAATCAGGAGCGGGTATCAATGAGTCCTACAAGAAAACCTGAT
 GGCCCTGAAGAAGTTTGTGATGGTAAAATTCCTCAATGATTCCATTGTGGACCCTGTAGATTCGGAGTGG
 TTTGGATTTTACAGAAGTGGCAAGCAAGGAAACCATTCCCTTACAGGAGACCTCCCTGTACACACAGG
 ACCGCCTGGGGCTAAAGGAAATGGACAATGCAGGACAGCTAGTGTCTGGCTACAGAAGGGGACCATCT
 TCAGTTGTCTGAAGAATGGTTTTATGCCACATCATACCATTCTTGGGA

ACGCGTACGCGGCGCTCGAGCAGAACTCATCTCAGAAGAGGATCTGGCAGCAATGATATCCTGGATT
 ACAAGGATGACGACGATAAGGTTTAA

Protein Sequence: >RC227286 representing NM_001142604
 Red=Cloning site Green=Tags(s)

MASPGCLWLLAVALLPWTCASRALQHLDPAPLPLVIWHGMGVFGLPRCPGESSHICDFIRKTLNAGAYS
 KVVQERLVQAEYWHDPKEDVYRNHSIFLADINQERGINESYKKNLMALKKFVMVKFLNDSIVDPVNSEW
 FGFYRSGQAKETIPLQETSLYTQDRLGLKEMDNAGQLVFLATEGDHLQLSEEFYAHIIIFLG

TRTRPLEQKLISEEDLAANDILDYKDDDDKV

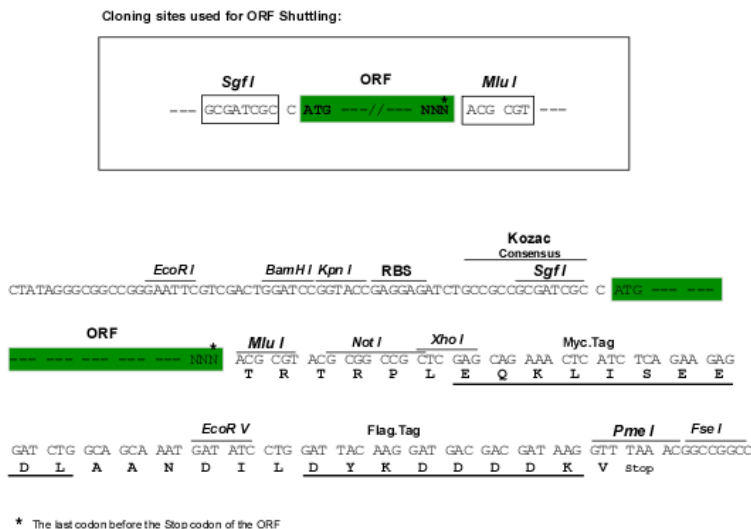


[View online »](#)

Chromatograms: https://cdn.origene.com/chromatograms/ja1460_c11.zip

Restriction Sites: SgfI-MluI

Cloning Scheme:



ACCN: NM_001142604

ORF Size: 609 bp

OTI Disclaimer: The molecular sequence of this clone aligns with the gene accession number as a point of reference only. However, individual transcript sequences of the same gene can differ through naturally occurring variations (e.g. polymorphisms), each with its own valid existence. This clone is substantially in agreement with the reference, but a complete review of all prevailing variants is recommended prior to use. [More info](#)

OTI Annotation: This clone was engineered to express the complete ORF with an expression tag. Expression varies depending on the nature of the gene.

Components: The ORF clone is ion-exchange column purified and shipped in a 2D barcoded Matrix tube containing 10ug of transfection-ready, dried plasmid DNA (reconstitute with 100 ul of water).

Reconstitution Method:

1. Centrifuge at 5,000xg for 5min.
2. Carefully open the tube and add 100ul of sterile water to dissolve the DNA.
3. Close the tube and incubate for 10 minutes at room temperature.
4. Briefly vortex the tube and then do a quick spin (less than 5000xg) to concentrate the liquid at the bottom.
5. Store the suspended plasmid at -20°C. The DNA is stable for at least one year from date of shipping when stored at -20°C.

RefSeq: [NM_001142604.2](#)

RefSeq ORF: 612 bp

Locus ID: 5538

UniProt ID: [P50897](#)

Cytogenetics: 1p34.2

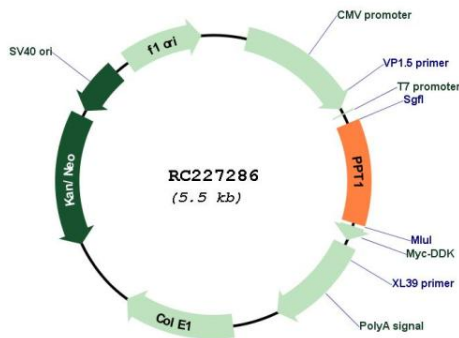
Protein Families: Druggable Genome

Protein Pathways: Fatty acid elongation in mitochondria, Lysosome, Metabolic pathways

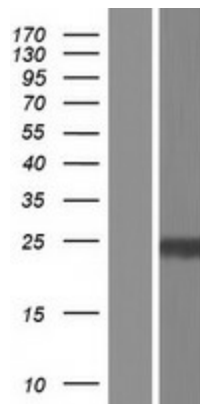
MW: 23.09 kDa

Gene Summary: The protein encoded by this gene is a small glycoprotein involved in the catabolism of lipid-modified proteins during lysosomal degradation. The encoded enzyme removes thioester-linked fatty acyl groups such as palmitate from cysteine residues. Defects in this gene are a cause of infantile neuronal ceroid lipofuscinosis 1 (CLN1, or INCL) and neuronal ceroid lipofuscinosis 4 (CLN4). Two transcript variants encoding different isoforms have been found for this gene.[provided by RefSeq, Dec 2008]

Product images:



Circular map for RC227286



Western blot validation of overexpression lysate (Cat# [LY428205]) using anti-DDK antibody (Cat# [TA50011-100]). Left: Cell lysates from untransfected HEK293T cells; Right: Cell lysates from HEK293T cells transfected with RC227286 using transfection reagent MegaTran 2.0 (Cat# [TT210002]).