

Product datasheet for RC227277

ELAPOR2 (NM_001142749) Human Tagged ORF Clone

Product data:

Product Type:	Expression Plasmids
Product Name:	ELAPOR2 (NM_001142749) Human Tagged ORF Clone
Tag:	Myc-DDK
Symbol:	ELAPOR2
Synonyms:	EIG121L; KIAA1324L
Mammalian Cell Selection:	Neomycin
Vector:	pCMV6-Entry (PS100001)
E. coli Selection:	Kanamycin (25 ug/mL)
ORF Nucleotide Sequence:	>RC227277 representing NM_001142749 Red=Cloning site Blue=ORF Green=Tags(s)

TTTTGTAATACGACTCACTATAGGGCGGCCGGGAATTCGTCGACTGGATCCGGTACCGAGGAGATCTGCC
GCC**CGATCGCC**

ATGCTGTTCCGCGCCCGGGGCCGGTACGGGCGAGGGCTGGGGCGGCCGGCGGAGGCTCCCCGCCGCG
GGCGCTCGCCGCCCTGGAGCCCCGCCTGGATTTGCTGCTGGGCGCTCGCCGGCTGCCAGGCGGCCTGGC
TGGGGACCTGCCCTCCTCCTCCAGCCGCCGCTTCTCCTTCCAGGAGAAAAGATTACTTTGAATAT
ACGGAATGTGATAGCAGTGGCTCCAGGTGGAGAGTTGCCATTCCAATTCTGCAGTGGACTGCTCTGGCC
TGCTGACCCAGTGAGAGGCAAAGAATGCACTTCTCCTGTGCTTCTGGAGAGTATCTAGAAATGAAGAA
CCAGGTATGCAGTAAGTGTGGTGAAGGCACCTATTCTTGGGCAGTGGCATCAAATTTGATGAATGGGAT
GAATTGCCGCGCAGGATTTCTAACATCGCAACATTCATGGACACTGTGGTGGGCCCTTCTGACAGCAGGC
CAGACGGCTGTAACAACCTTTCTTGGATCCCTCGTGGAACTACATAGAACTAACTCGTGATGACTGCAC
GGTGTCTTTGATCTATGCTGTGCACCTAAGAAGTCAGGCTATGTCTTCTTTGAGTACCAGTATGTGCGAC
ACAACATCTTCTTTGAGTCTTTATTCAAATGATCAGTGCCAGGAGATGGACACCACCACTGACAAGT
GGGTAACCTTACAGACAATGGAGAATGGGGCTCCTATTCTGTAATGCTGAAATCAGGCACAACATACT
CTACTGGAGAACTACAGGCATCCTTATGGGTTCTAAGGCGGTCAAGCCTGTGCTGGTAAAAAATATCACA
ATTGAAGGGTGGCGTACACATCAGAATGTTTTCTTGAAGCCAGGCACATTGCAACAACAAACCCAGGTT
CATTCAACTGCCAGGTGTGTCAGAAACACCTATTCTGAGAAAGGAGCCAAAGAATGTATAAGGTGTA
AGACGACTCTCAATTTTTCAGAGGAAGGATCCAGTGTGACAGAGCGCCCTCCCTGTACCACAAAAGAC
TATTTCCAGATCCATACTCCATGTGATGAAGAAGGAAAGACACAGATAATGTACAAGTGGATAGAGCCCA
AAATCTGCCGGGAGGATCTCACAGATGCTATTAGATTGCCCTTCTGGAGAGAAGAAGGATTGTCCGCC
TTGCAACCCTGGATTTTATAACAATGGATCATCTTCTTGGCATCCCTGTCTCCTGGAACATTTTCAGAT
GGAACCAAGAATGTAGACCATGTCCAGCAGGAACGGAGCCTGCCTTGGCTTTGAAATAAATGGTGA
ATGTCCTTCTGGCAACATGAAACTTCTGCTCAATGTTGGGAATCAAAGTGCAGTGAATGAATGG
TTGGGAGTGGCTGGAGATCATATCCAGAGTGGGCTGGAGTCTGACAATGATTACCTGATCTTAAAC



[View online >](#)

TTGCATATCCCAGGATTTAAACCACCAACATCTATGACTGGAGCCACGGGTTCTGAACTAGGAAGAATAA
 CATTGTCTTTGAGACCCCTCTGTTACAGTCTGACTGTGTTTTGACTTCATGGTGGATTAATAGAAAAAG
 TACAAATGTGGTAGAATCGTGGGGTGAACCAAGAAAAACAAGCTTACACCCATATCATCTTCAAGAA
 GCAACTTTTACATTTACATGGGCATTCCAGAGAACTAATCAGGGTCAAGATAATAGACGGTTCATCAATG
 ACATGGTGAAGATTTATTCTATCACAGCCACTAATGCAGTTGATGGGGTGGCGTCTCATGCCGTGCCTG
 TGCCCTCGGTTCTGAACAGTCCGGTTCATCGTGTGTCCCCTGCCCTCCAGGCCACTACATTGAGAAAAGAA
 ACCAACCAAGTCAAGGAATGTCCACCTGACACCTACCTGTCCATACATCAGGTCTATGGCAAAGAGGCTT
 GTATTCCATGCGGGCCTGGGAGTAAAAACAATCAGGACCATTTCGGTTTGCATATAGTGACTGCTTTTTCTA
 CCATGAAAAAGAAAAATCAGAGTTTGCACTATGACTTTAGCAACCTCAGCAGTGTGGGCTCATTAAATGAAT
 GGCCCCAGCTTACCTCCAAAGGAACAAAACTTCCATTTCTTCAATATCAGTTTATGTGGCATGAGG
 GGAAGAAGATGGCTCTCTGTACCAACAATAACAGACTTTACAGTAAAAGAAATAGTGGCAGGGTCAGA
 TGATTACACAAATTTGGTAGGGCATTGTATGCCAGTCAACAATTATTCCTTCTGAAAGTAAGGGTTTC
 CGAGCAGCCTTATCATCACAATCCATCATTCTGGCAGATACATTCATAGGAGTACAGTTGAAACCAT
 TGAATAATATAAAAAGAAGATATGTTCCAGTTCACCAAGCCAAATACCAGATGTGCATTTCTT
 TTATAAGTCTTACAGCAACAACATCTTGTATTAATGGCCGATCAACTGCTGTGAAAATGAGGTGTAAT
 CCTACTAAATCTGGAGCAGGAGTATTCAGTCCCAGCAAGTGCCAGCAGGTACTGTGATGGGTGTA
 CGTTCTATTTCTGTGGGAGAGTGTGAAGCTTGCCCTCTGTGTACGGAGCATGACTTCCATGAGATTGA
 GGGAGCCTGCAAGAGAGGATTTACAGAAACCTGTATGTGTGGAATGAACCTAAATGGTGCATTAAGGA
 ATTTCTTTGCCTGAGAAAAAGTTGGCAACCTGTGAAACGGTTGACTTTTGGCTGAAGGTGGGAGCCGGTG
 TGGGAGCTTTTACTGCCGTTTGTCTGGTGGCTCTGACCTGCTACTTCTGGAAAAAGAAATCAAAAAGTGA
 ATACAAATATTCAGTTAGTAATGACGACTAACTCAAAAGAGTGTGAACTCCCGCTGCAGACAGTTGT
 GCTATCATGGAAGGAGAAGATAATGAAGAGGAAGTTGTATTTCCAATAAACAGTCACTACTAGGAAAAC
 TCAAATCTTTGGCAACCAAGGAAAAAGAAGACCATTTGAATCTGTTCAACTGAAAACCTCAAGATCCCC
 AAATATA

ACGCGTACGCGGCCGCTCGAGCAGAACTCATCTCAGAAGAGGATCTGGCAGCAATGATATCCTGGATT
 ACAAGGATGACGACGATAAGGTTTAA

Protein Sequence:

>RC227277 representing NM_001142749
 Red=Cloning site Green=Tags(s)

MLFRARGPVRGRGWGRPAEAPRRGRSPPWSPAWI CCWALAGCQAAWAGDLPSSSRPLPPCQEKDYHFEY
 TECDSSGSRWRVAIPNSAVDCSGLPDPVRGKECTFSCASGEYLEMKNQVCSKCGEGTYSLSGSIKDFEWD
 ELPAGFSNIATFMDTVVGPSPDRPDGCNNSWIPRGNIESNRDDCTVSLIYAVHLKKSQYVFFQYQYVD
 NNIFFEFFIQNDQCQEMDTTDDKWKLDNNGEWGSHSVMLKSGTNILYWRRTTGILMGSKAVKPVLVKNIT
 IEGVAYTSECFCKPGTFSNKPGSFNCQVCPRNTYSEKGAKECIRCKDDSQFSEEGSSECTERPPCTTKD
 YFQIHTPCDEEGKTQIMYKWIIEPKICREDLTDAILRPPSGEKKDCPPCNPFGFYNNGSSSCHPCPPGTFSD
 GTKECRPCPAGTEPALGFEYKWWNVLPGNMKTSCFNVGNSKCDGMNGWEVAGDHIQSGAGGSDNDYLILN
 LHIPGFKPPTSMTGATGSELGRITFVFETLCSADCVLYFMVDINRKSTNVVSWGGTKEKQAYTHIIFKN
 ATFTFTWAFQRTNQDNRFFINDMVKIYSITATNAV DGVASSCRACALGSEQSGSSCVP PPGHYIEKE
 TNQCKECPD TYLSIHQVYGKEACIPCGPGSKNNQDHSVCSYDCFFYHEKENQSLHYDFS NLSSVGLSMN
 GPSFTSKGTYFHHFNISLCGHEGKKMALCTNNITDFTVKEIVAGSDDYTNLVGAFVCQSTIIPSESKGF
 RAALSSQSIILADTFIGVTVETLKNINIKEDMFPVPTSQIPDVHFFYKSSATTSCINGRSTAVKMRCN
 PTKSGAGVISVPSKCPAGTCDGCTFYFLWESAEACPLCTEHDFHEIEGACKRGFQETLYVWNEPKWCIKG
 ISLPEKCLATCETVDFWLKVGAGVGAFTAVLLVALTCYFWKKNQKLEYKYSKLVMTTNSKECELPAADSC
 AIMEGEDNEEVVYSNKQSLLGKLSLATKEKEDHFESVQLKTSRSPNI

TRTRPLEQKLI SEEDLAANDILDYKDDDDKV

Chromatograms:

https://cdn.origene.com/chromatograms/mk8006_f04.zip

Restriction Sites:

Sgfl-Mlul

Cloning Scheme:


ACCN: NM_001142749

ORF Size: 3087 bp

OTI Disclaimer: The molecular sequence of this clone aligns with the gene accession number as a point of reference only. However, individual transcript sequences of the same gene can differ through naturally occurring variations (e.g. polymorphisms), each with its own valid existence. This clone is substantially in agreement with the reference, but a complete review of all prevailing variants is recommended prior to use. [More info](#)

OTI Annotation: This clone was engineered to express the complete ORF with an expression tag. Expression varies depending on the nature of the gene.

Components: The ORF clone is ion-exchange column purified and shipped in a 2D barcoded Matrix tube containing 10ug of transfection-ready, dried plasmid DNA (reconstitute with 100 ul of water).

- Reconstitution Method:**
1. Centrifuge at 5,000xg for 5min.
 2. Carefully open the tube and add 100ul of sterile water to dissolve the DNA.
 3. Close the tube and incubate for 10 minutes at room temperature.
 4. Briefly vortex the tube and then do a quick spin (less than 5000xg) to concentrate the liquid at the bottom.
 5. Store the suspended plasmid at -20°C. The DNA is stable for at least one year from date of shipping when stored at -20°C.

RefSeq: [NM_001142749.3](#)

RefSeq ORF: 3090 bp

Locus ID: 222223

UniProt ID: [A8MWY0](#)

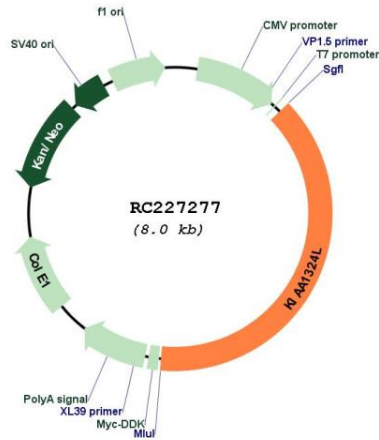
Cytogenetics: 7q21.12

Protein Families: Transmembrane

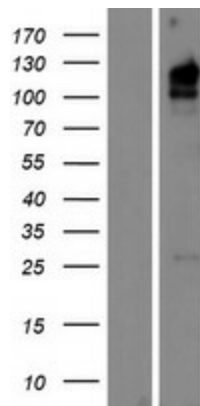
MW: 113.7 kDa

Gene Summary: Functions as a regulator of the BMP signaling pathway and may be involved in epidermal differentiation.[UniProtKB/Swiss-Prot Function]

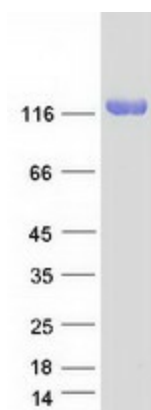
Product images:



Circular map for RC227277



Western blot validation of overexpression lysate (Cat# [LY428259]) using anti-DDK antibody (Cat# [TA50011-100]). Left: Cell lysates from untransfected HEK293T cells; Right: Cell lysates from HEK293T cells transfected with RC227277 using transfection reagent MegaTran 2.0 (Cat# [TT210002]).



Coomassie blue staining of purified KIAA1324L protein (Cat# [TP327277]). The protein was produced from HEK293T cells transfected with KIAA1324L cDNA clone (Cat# RC227277) using MegaTran 2.0 (Cat# [TT210002]).