

Product datasheet for **RC227274**

CBWD1 (NM_001145355) Human Tagged ORF Clone

Product data:

Product Type:	Expression Plasmids
Product Name:	CBWD1 (NM_001145355) Human Tagged ORF Clone
Tag:	Myc-DDK
Symbol:	CBWD1
Synonyms:	COBP
Mammalian Cell Selection:	Neomycin
Vector:	pCMV6-Entry (PS100001)
E. coli Selection:	Kanamycin (25 ug/mL)
ORF Nucleotide Sequence:	>RC227274 representing NM_001145355 Red=Cloning site Blue=ORF Green=Tags(s)

TTTTGTAATACGACTCACTATAGGGCGGCCGGAATTCGTCGACTGGATCCGGTACCGAGGAGATCTGCC
GCC**CGATCGC**C

ATGTATTTCAAACGTGCCGCTCGGGCCTTTCCCGTATTGCTCACTGGTGCTGGGAAGACAACACTTCTGA
ACTATATTTTGACAGAGCAACATAGTAAAAGAGTAGCGGTCATTTTAAATGAATTTGGGGAAGGAAGTGC
GCTGGAGAAATCCTTAGCTGTGAGCAAGGTGGAGAGCTCTATGAAGAGTGGCTGGAACCTAGAAACGGT
TGCCCTGCTGTTGAGTGAAGGACAGTGGCCTTAGAGCTATTGAGAATTTGATGCAAAAGAAGGGGAAAT
TTGATTACATACTGTTAGAGACCACTGGATTAGCAGACCCTGGTGCAGTGGCTTCTATGTTTTGGGTTGA
TGCTGAATTAGGGAGTGATATTTATCTTGATGGTATCATAACTATTGTGGATTCAAATATGGATTA
CATTTAACAGAAGAGAAACCTGATGGCCTTATCAATGAAGCTACTAGACAAGTTGCTTTGGCAGATGCCA
TTCTCATTAAATAAACAGACCTGGTTCCAGAAGAAGATGTAAAGAAATTAAGAACGACAATTAGATCCAT
AAATGGACTAGGACAAATCTTAGAAACAAAGATCAAGAGTTGATCTCTCTAATGTATTAGATCTTCAT
GCCTTTGATAGTCTCTGGAATAAGTTTGCAGAAAAAATTCAGCATGTGCCAGGAACACAACCTCACC
TTGATCAGAGTATTGTTACAATCACATTTGAAGTACCAGGAAATGCAAAGGAAGAATCTTAATATGTT
TATTCAGAATCTCCTGTGGGAAAAGAATGTGAGAAACAAGGACAATCACTGCATGGAGGTCATAAGGCTG
AAGGGATTGGTGTCAATCAAAGCAAATCACAACAAGTATTGTCCAGGGTGTCCATGAGCTCTATGATC
TGGAGGACTCCAGTGAAGTGGAGGATGACTGAGAGAAACAATCGATTGGTCTCCTTGGCAGAAA
TTAGATAAGGATATCCTTAAACAGCTGTTTATAGCTACTGTGACAGAAACAGAAAAGCAGTGGACAACA
CGTTTCCAAGAAGATCAAGTTTGTACA

ACGCGTACGCGGCCGCTCGAGCAGAAACTCATCTCAGAAGAGGATCTGGCAGCAAATGATATCCTGGATT
ACAAGGATGACGACGATAAGGTTTAA



[View online »](#)

Protein Sequence: >RC227274 representing NM_001145355
Red=Cloning site Green=Tags(s)

MYFKRAARAFPVLLTGAGKTTLLNYILTEQHSKRVAVILNEFGECSALEKSLAVSQGGELYEEWLELRNG
 CLCCSVKDSGLRAIENLMQKKGKFDYILLETGLADPGAVASMFVDAELGSDIYLDGIIITVDSKYGLK
 HLTEEKPDGLINEATRQVALADAILINKTDLVPEEDVKKLRTTIRSINGLGQILETQSRVDLSNVLDLH
 AFDSLSGISLQKKLQHVPGTQPHLDQSIVTITFEVPGNAKEEHLNMFIQNLLWEKNVVRNKDNHCMEVIRL
 KGLVSIKDKSQQVIVQGVHELYDLEETPVSWKDDTERTNRLVLLGRNLDKDILKQLFIATVTETEKQWTT
 RFQEDQVCT

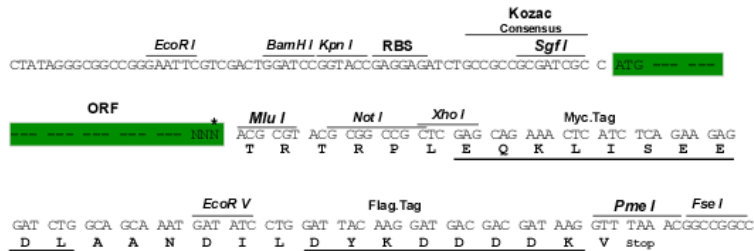
TRTRPLEQKLISEEDLAANDILDYKDDDDKV

Chromatograms: https://cdn.origene.com/chromatograms/ja1551_a05.zip

Restriction Sites: SgfI-MluI

Cloning Scheme:

Cloning sites used for ORF Shuttling:



* The last codon before the Stop codon of the ORF

ACCN: NM_001145355

ORF Size: 1077 bp

OTI Disclaimer: The molecular sequence of this clone aligns with the gene accession number as a point of reference only. However, individual transcript sequences of the same gene can differ through naturally occurring variations (e.g. polymorphisms), each with its own valid existence. This clone is substantially in agreement with the reference, but a complete review of all prevailing variants is recommended prior to use. [More info](#)

OTI Annotation: This clone was engineered to express the complete ORF with an expression tag. Expression varies depending on the nature of the gene.

Components: The ORF clone is ion-exchange column purified and shipped in a 2D barcoded Matrix tube containing 10ug of transfection-ready, dried plasmid DNA (reconstitute with 100 ul of water).

- Reconstitution Method:**
1. Centrifuge at 5,000xg for 5min.
 2. Carefully open the tube and add 100ul of sterile water to dissolve the DNA.
 3. Close the tube and incubate for 10 minutes at room temperature.
 4. Briefly vortex the tube and then do a quick spin (less than 5000xg) to concentrate the liquid at the bottom.
 5. Store the suspended plasmid at -20°C. The DNA is stable for at least one year from date of shipping when stored at -20°C.

RefSeq: [NM_001145355.1](#), [NP_001138827.1](#)

RefSeq ORF: 1080 bp

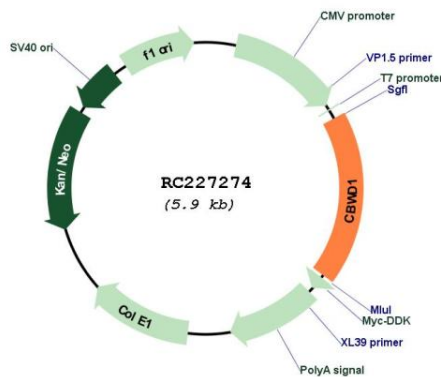
Locus ID: 55871

UniProt ID: [Q9BRT8](#)

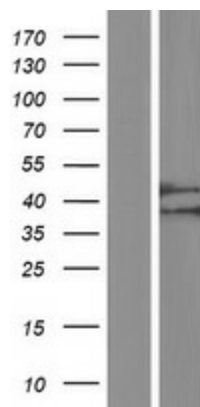
Cytogenetics: 9p24.3

MW: 40.2 kDa

Product images:



Circular map for RC227274



Western blot validation of overexpression lysate (Cat# [LY428840]) using anti-DDK antibody (Cat# [TA50011-100]). Left: Cell lysates from untransfected HEK293T cells; Right: Cell lysates from HEK293T cells transfected with RC227274 using transfection reagent MegaTran 2.0 (Cat# [TT210002]).