

Product datasheet for RC227268

HES4 (NM_001142467) Human Tagged ORF Clone

Product data:

Product Type:	Expression Plasmids
Product Name:	HES4 (NM_001142467) Human Tagged ORF Clone
Tag:	Myc-DDK
Symbol:	HES4
Synonyms:	bHLHb42
Mammalian Cell Selection:	Neomycin
Vector:	pCMV6-Entry (PS100001)
E. coli Selection:	Kanamycin (25 ug/mL)
ORF Nucleotide Sequence:	>RC227268 representing NM_001142467 Red=Cloning site Blue=ORF Green=Tags(s)

TTTTGTAATACGACTCACTATAGGGCGGCCGGAATTCGTCGACTGGATCCGGTACCGAGGAGATCTGCC
GCC**CGATCGCC**

ATGGCCGCAGACACGCCGGGAAACCGAGCGCCTCGCCGATGGCAGGAGCGCCGGCCAGCGCCAGCCGGA
CCCCAGACAAGCCCCGGAGCGCGGCCGAGCACCACAAGGTGGGGTCCCGGCCGGCGTGAGGGGGCGAC
CGGGGGCGGGAGGGACCGGGACTCAGCCGGTGCCCGACCCGAGTCTCCAAGCCGGTATGGAGAAG
CGGCGCCGAGCGGTATTAACGAGAGCCTCGCTCAGCTCAAACCCTCATCCTGGACGCCCTCAGAAAAG
AGAGCTCCCGCCACTCGAAGCTGGAGAAGCGGACATCCTGGAGATGACCGTGAGACACCTGCGGAGCCT
GGTTCGGTGCAGGTGACGGCCGCGTACGCGCCGACCCGCGTCTGGCAAGTACCGCGCCGGCTTC
CACGAGTGTCTGGCGGAGGTGAACCGCTTCTGGCCGGCTGCGAGGGCGTCCCGGCCGACGTGCGCTCCC
GCCTGCTGGGCCACCTGGCAGCCTGCCTGCGCCAGCTGGGACCCTCCCGCCGCCGGCCTCGCTGTCCCC
GGCTGCCCCCGCAGAGGCCCCAGCGCCCGAGGTCTACGCGGGCCGCCGCTGCTGCCATCGCTCGGGCGC
CCCTTCCCTCTGCTCGCGCCCGCTGCTGCGGGTCTGACCCGGGCGCTGCCCGCCGCCCCAGGGCGG
GGCCGAGGGCCCGGGTGGGCCCTGGAGGCCGTGGCTGCGC

ACGCGTACGCGGCCGCTCGAGCAGAACTCATCTCAGAAGAGGATCTGGCAGCAAATGATATCCTGGATT
ACAAGGATGACGACGATAAGGTTTAA



[View online »](#)

Protein Sequence: >RC227268 representing NM_001142467
Red=Cloning site Green=Tags(s)

MAADTPGKPSASPMAGAPASASRTPDKPRSAEHRKVGSRPGVVRGATGGREGRGTQVPDPQSSKPVMEK
 RRRRINESLAQLKTLILDALRKESRHSKLEKADILEMTVRLRSLRRVQVTAALSADPAVLGKYRAGF
 HECLAENVNRFAGCEGVPADVRSRLLGHLAACLRQLGPSRRPASLSPAAPAEAPAEVYAGRLLPSLGG
 PFPLLAPPLLGLTRALPAAPRAGPQGGPGRPWLRL

TRTRPLEQKLI SEEDLAANDILDYKDDDDKV

Chromatograms: https://cdn.origene.com/chromatograms/mk8032_e09.zip

Restriction Sites: SgfI-MluI

Cloning Scheme:

Cloning sites used for ORF Shuttling:



* The last codon before the Stop codon of the ORF

ACCN: NM_001142467

ORF Size: 741 bp

OTI Disclaimer: The molecular sequence of this clone aligns with the gene accession number as a point of reference only. However, individual transcript sequences of the same gene can differ through naturally occurring variations (e.g. polymorphisms), each with its own valid existence. This clone is substantially in agreement with the reference, but a complete review of all prevailing variants is recommended prior to use. [More info](#)

OTI Annotation: This clone was engineered to express the complete ORF with an expression tag. Expression varies depending on the nature of the gene.

Components: The ORF clone is ion-exchange column purified and shipped in a 2D barcoded Matrix tube containing 10ug of transfection-ready, dried plasmid DNA (reconstitute with 100 ul of water).

Reconstitution Method:

1. Centrifuge at 5,000xg for 5min.
2. Carefully open the tube and add 100ul of sterile water to dissolve the DNA.
3. Close the tube and incubate for 10 minutes at room temperature.
4. Briefly vortex the tube and then do a quick spin (less than 5000xg) to concentrate the liquid at the bottom.
5. Store the suspended plasmid at -20°C. The DNA is stable for at least one year from date of shipping when stored at -20°C.

RefSeq: [NM_001142467.2](#)

RefSeq ORF: 744 bp

Locus ID: 57801

UniProt ID: [Q9HCC6](#)

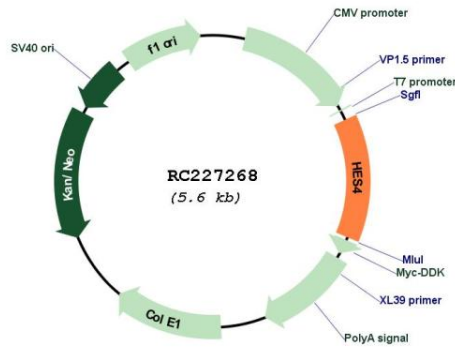
Cytogenetics: 1p36.33

Protein Families: Druggable Genome, Transcription Factors

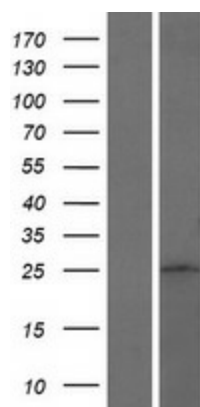
MW: 25.9 kDa

Gene Summary: Transcriptional repressor. Binds DNA on N-box motifs: 5'-CACNAG-3' (By similarity).
[UniProtKB/Swiss-Prot Function]

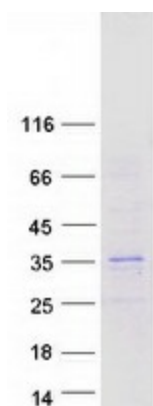
Product images:



Circular map for RC227268



Western blot validation of overexpression lysate (Cat# [LY428113]) using anti-DDK antibody (Cat# [TA50011-100]). Left: Cell lysates from untransfected HEK293T cells; Right: Cell lysates from HEK293T cells transfected with RC227268 using transfection reagent MegaTran 2.0 (Cat# [TT210002]).



Coomassie blue staining of purified HES4 protein (Cat# [TP327268]). The protein was produced from HEK293T cells transfected with HES4 cDNA clone (Cat# RC227268) using MegaTran 2.0 (Cat# [TT210002]).