

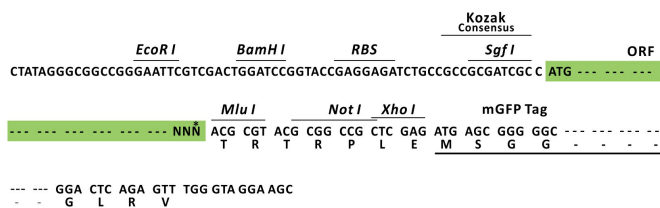
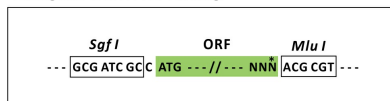
## Product datasheet for RC227263L4

### TYW1B (NM\_001145441) Human Tagged Lenti ORF Clone

#### Product data:

Product Type:	Expression Plasmids
Product Name:	TYW1B (NM_001145441) Human Tagged Lenti ORF Clone
Tag:	mGFP
Symbol:	TYW1B
Synonyms:	LINC00069; NCRNA00069; RSAFD2
Mammalian Cell Selection:	Puromycin
Vector:	pLenti-C-mGFP-P2A-Puro (PS100093)
E. coli Selection:	Chloramphenicol (34 ug/mL)
ORF Nucleotide Sequence:	The ORF insert of this clone is exactly the same as(RC227263).
Restriction Sites:	SgfI-MluI
Cloning Scheme:	

Cloning sites used for ORF Shuttling:



\* The last codon before the Stop codon of the ORF.

ACCN:	NM_001145441
ORF Size:	1413 bp



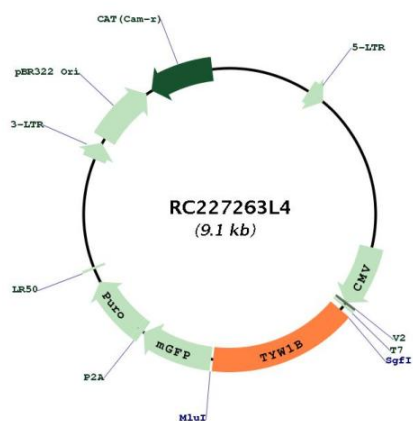
[View online »](#)



<b>OTI Disclaimer:</b>	The molecular sequence of this clone aligns with the gene accession number as a point of reference only. However, individual transcript sequences of the same gene can differ through naturally occurring variations (e.g. polymorphisms), each with its own valid existence. This clone is substantially in agreement with the reference, but a complete review of all prevailing variants is recommended prior to use. <a href="#">More info</a>
<b>OTI Annotation:</b>	This clone was engineered to express the complete ORF with an expression tag. Expression varies depending on the nature of the gene.
<b>Components:</b>	The ORF clone is ion-exchange column purified and shipped in a 2D barcoded Matrix tube containing 10ug of transfection-ready, dried plasmid DNA (reconstitute with 100 ul of water).
<b>Reconstitution Method:</b>	<ol style="list-style-type: none"> <li>1. Centrifuge at 5,000xg for 5min.</li> <li>2. Carefully open the tube and add 100ul of sterile water to dissolve the DNA.</li> <li>3. Close the tube and incubate for 10 minutes at room temperature.</li> <li>4. Briefly vortex the tube and then do a quick spin (less than 5000xg) to concentrate the liquid at the bottom.</li> <li>5. Store the suspended plasmid at -20°C. The DNA is stable for at least one year from date of shipping when stored at -20°C.</li> </ol>
<b>RefSeq:</b>	<a href="#">NM_001145441.1</a> , <a href="#">NP_001138913.1</a>
<b>RefSeq ORF:</b>	1416 bp
<b>Locus ID:</b>	441250
<b>Cytogenetics:</b>	7q11.22-q11.23
<b>MW:</b>	54.1 kDa
<b>Gene Summary:</b>	Wybutosine is a hypermodified guanosine found in phenylalanine tRNA. Wybutosine functions to stabilize codon-anticodon interactions during ribosome decoding and therefore supports the maintenance of the reading frame. In yeast, the homolog of this gene is essential for the synthesis of wybutosine. The human genome contains two closely related genes that putatively function in wybutosine synthesis. The open reading frame of this locus is disrupted in some individuals. Thus, this locus appears to be an evolving pseudogene, but may still be functional in some members of the population. [provided by RefSeq, Apr 2014]



## Product images:



Circular map for RC227263L4