

Product datasheet for **RC227250**

PTGES3L-AARSD1 (NM_001136042) Human Tagged ORF Clone

Product data:

Product Type:	Expression Plasmids
Product Name:	PTGES3L-AARSD1 (NM_001136042) Human Tagged ORF Clone
Tag:	Myc-DDK
Symbol:	PTGES3L-AARSD1
Mammalian Cell Selection:	Neomycin
Vector:	pCMV6-Entry (PS100001)
E. coli Selection:	Kanamycin (25 ug/mL)



[View online »](#)

ORF Nucleotide Sequence:

>RC227250 representing NM_001136042
 Red=Cloning site Blue=ORF Green=Tags(s)

TTTTGTAATACGACTCACTATAGGGCGGCCGGAATTCGTCGACTGGATCCGGTACCGAGGAGATCTGCC
 GCC**CGCATCGCC**

ATGTTCTCTCTTCTCAACTGCTCTCCGACCATAAAGGAGAGGCAGCTGCTGGGGCGTCCCAGG
 ATCTAAAGATAGCGGCCCTGCCTGGAAGCTCTAAATGCCACCCTGGAGCGGGAGCCGAATGGCAGCGCA
 GCACGCCCGACCTTGTGGTACGACAGGCCAGGTATGTGTTTCATGGAGTTTTGTGTTGAGGACAGCACC
 GATGTCCACGTGCTTATTGAGGATCACCGCATTGTGTTACAGTGCAGAAATGCCGATGGAGTGGAGTTGT
 ACAATGAGATTGAGTTCTATGCCAAAGTGAAGTCCAAGGACTCCCAGGATAAGCGCTCTTCCCGCTCTAT
 TACTTGTGTTGTGAGAAAATGGAAGGAAAAGTGGCCTGGCCGCGGCTTACCAAGGAGGATCAAGCCA
 GTGTGGCTGTCTGGACTTTGATAACTGGAGAGACTGGGAAGGGGATGAAGAGATGGAGCTGGCTCATG
 TGAACATTATGCAGAGCTTTTGAAGAAGTGCAGACCAAGAGACCTCCACCTGCCATGGATGATTTGGA
 TTTACCACCACCGTGGTCTCTGCTGTCCCGGAGCTGCAGACTGAAGGGAGCAACGGCAAGAAAGAA
 GTGCTGAGCGGTTTCCAAGTGGTCTGGAAGACACAGTCTTTCCCTGAGGGCGGGGACAGCCTGATG
 ACCGTGGTACAATCAATGACATCTCTGTGCTGAGAGTGAAGTCCGCGTGGGGAACAGGCTGATCATTTAC
 CCAGACACCCCTGGATCCAGGAAGCCAGGTTCTGGTCCGGGTAGATTGGGAGCGGAGTTTGACCACATG
 CAGCAGCATTACGGGCAGCATCTCATCACGGCAGTTGCTGACCATCTATTTAAGCTGAAGACAACATCAT
 GGGAGTTAGGGAGATTTTCGGAGTGCATTGAGCTGGACACCCCTCTATGACTGCAGAGCAAGTAGCTGC
 CATTGAGCAGAGCGTCAATGAAAAATCAGAGATCGGCTGCCTGTGAATGTCGAGAAGTGAAGCTGGAT
 GATCCTGAGGTGGAGCAGGTGAGTGGCCGGGTTTGCCTGATGATCATGCTGGGCCAATTCGGGTTGTTA
 ACATCGAGGGCGTTGATCCAACATGTGCTGTGGGACCCATGTGAGCAATCTCAGTGACCTCAGGTCAT
 TAAGATTCTGGGCACTGAGAAGGGGAAAAAGAACAGAACCAACCTGATATTTCTGTCTGGGAACCGGGTG
 CTGAAGTGGATGGAGAGAAGTCAATGGAAGTGAAGGACTGACTGCTCTGCTTAAAGTGTGGAGCAGAGG
 ATCATGTGAAGCAGTGAAGGCTCCAGAACTCCACCAAGATCTGCAGAAAGTAACTGAATCTGCT
 CAGAGACCTGGCTGTGCACATTGCCATAGCCTCAGGAACAGTCCAGACTGGGGAGGTGGTGCATATTA
 CACAGGAAGGAGGGTATTGAGATTGATGAATATCATTGCCAATGAGATTGGGTGAGAGGAGACCTCC
 TGTTCTTAACTGTGGCGATGAGAAAGGTGGTGGACTCTTCTTACTGGCAGGGCCACCTGCGTCTGTGGA
 GACCCTGGGGCCAGGGTGGCTGAGTCTGGAAGGCAAGGAGCAGGGAAGAAAGGCCGTTTTCAGGGC
 AAGGCCACCAAGATGAGCCGGCGATGGAGGCGCAGGCGCTTCTCCAGGACTACATCAGCACGCAGAGTG
 CTAAGGAG

ACGCGTACGCGGCCGCTCGAGCAGAAACTCATCTCAGAAGAGGATCTGGCAGCAAATGATATCCTGGATT
 ACAAGGATGACGACGATAAGGTTTAA

Protein Sequence:

>RC227250 representing NM_001136042
 Red=Cloning site Green=Tags(s)

MFSLPLNCSPDHIRRGSWGRPQDLKIAAPAWNSKCHPGAGAAMARQHARTLWYDRPRYVMEFCVEDST
 DVHVLIEDHRIVFSCKNADGVELYNEIEFYAKVNSKDSQDKRSSRSTCFVRKWKKEKVAWPRLTKEDIK
 VWLSVDFDNWRDWEDEEMELAHVEHYAELLKKVSTKRPPAMDDLDFTTTTVVSCEPAELQTEGNSGKKE
 VLSGFQVLEDTVLFPEGGGQPDDRGTINDISVLRVTRRGEQADHFTQTPLDPSQVLRVDWERRFDHM
 QQHSGQHLITAVADHLFKLKTTSWELGRFRSAIELDTPSMTAEQVAAIEQSVNEKIRDRLPVNVRELSL
 DPEVEQVSGRGLPDDHAGPIRVVNIIEGVDSNMCCGTHVSNLSDLQVIKILGTEKGKKNRNLIFLSGNRV
 LKWMERSHGTEKALTALLKCGAEDHVEAVKKLQNSTKILQKNNLNLRLAVHIAHSLRNSPDWGGVVIL
 HRKEGDSEFMNIIANEIGSEETLLFLTVDGDEKGGFLFLAGPPASVETLGPRAEVLGKAGKGRFQG
 KATKMSRRMEAQALLQDYISTQSAKE

TRTRPLEQKLISEEDLAANDILDYKDDDDKV

Chromatograms:

https://cdn.origene.com/chromatograms/mk8068_e06.zip

Restriction Sites: SgfI-MluI

Cloning Scheme:



ACCN: NM_001136042

ORF Size: 1758 bp

OTI Disclaimer: The molecular sequence of this clone aligns with the gene accession number as a point of reference only. However, individual transcript sequences of the same gene can differ through naturally occurring variations (e.g. polymorphisms), each with its own valid existence. This clone is substantially in agreement with the reference, but a complete review of all prevailing variants is recommended prior to use. [More info](#)

OTI Annotation: This clone was engineered to express the complete ORF with an expression tag. Expression varies depending on the nature of the gene.

Components: The ORF clone is ion-exchange column purified and shipped in a 2D barcoded Matrix tube containing 10ug of transfection-ready, dried plasmid DNA (reconstitute with 100 ul of water).

- Reconstitution Method:**
1. Centrifuge at 5,000xg for 5min.
 2. Carefully open the tube and add 100ul of sterile water to dissolve the DNA.
 3. Close the tube and incubate for 10 minutes at room temperature.
 4. Briefly vortex the tube and then do a quick spin (less than 5000xg) to concentrate the liquid at the bottom.
 5. Store the suspended plasmid at -20°C. The DNA is stable for at least one year from date of shipping when stored at -20°C.

Note: Plasmids are not sterile. For experiments where strict sterility is required, filtration with 0.22um filter is required.

RefSeq: [NM_001136042.2](#), [NP_001129514.2](#)

RefSeq ORF: 1761 bp

Locus ID: 100885850

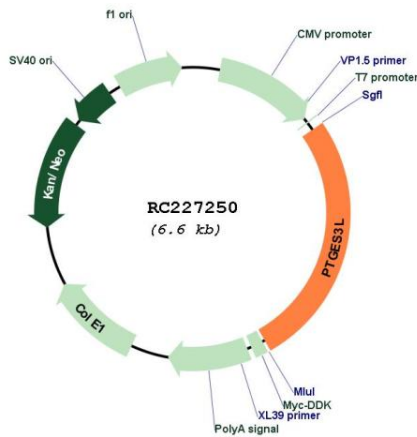
UniProt ID: [Q9BTE6](#)

Cytogenetics: 17q21.31

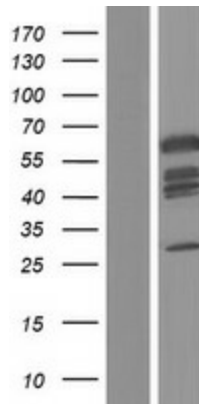
MW: 65.5 kDa

Gene Summary: This locus represents naturally occurring readthrough transcription between the neighboring PTGES3L (prostaglandin E synthase 3 (cytosolic)-like) and AARSD1(alanyl-tRNA synthetase domain containing 1) genes on chromosome 17. The readthrough transcript encodes a fusion protein that shares sequence identity with each individual gene product. [provided by RefSeq, May 2012]

Product images:



Circular map for RC227250



Western blot validation of overexpression lysate (Cat# [LY427789]) using anti-DDK antibody (Cat# [TA50011-100]). Left: Cell lysates from untransfected HEK293T cells; Right: Cell lysates from HEK293T cells transfected with RC227250 using transfection reagent MegaTran 2.0 (Cat# [TT210002]).