

Product datasheet for **RC227246**

RAB11FIP3 (NM_001142272) Human Tagged ORF Clone

Product data:

Product Type:	Expression Plasmids
Product Name:	RAB11FIP3 (NM_001142272) Human Tagged ORF Clone
Tag:	Myc-DDK
Symbol:	RAB11FIP3
Synonyms:	CART1; FIP3-Rab11; Rab11-FIP3
Mammalian Cell Selection:	Neomycin
Vector:	pCMV6-Entry (PS100001)
E. coli Selection:	Kanamycin (25 ug/mL)



[View online »](#)

ORF Nucleotide Sequence:

>RC227246 representing NM_001142272
 Red=Cloning site Blue=ORF Green=Tags(s)

TTTTGTAATACGACTCACTATAGGGCGGCCGGAATTCGTCGACTGGATCCGGTACCGAGGAGATCTGCC
 GCC**CGGATCGCC**

ATGCCCTTCTGAAGGCCAACGAGGTGACGGACAGCGCGTACATGGGCTCCGAGAGCACCTACAGTGAGT
 GTGAGACCTTACGGACGAGGACACCAGCACCTGGTGCACCCTGAGCTGCAACCTGAAGGGGACGCAGA
 CAGTGCCGGCGGCTCGGGCGTGCCTCTGAGTGCTGGACGCCATGGAGGAGCCCACCATGGTGCCTG
 CTGCTGCTCCCAGGCAGGCCTCACCCCATGGCCAGTCTGTATCACGGTGATCGGGGGCAGGAGCACT
 TTGAGGACTACGGTGAAGGCAGTGAGGCGGAGCTGTCCCAGAGACCCTATGCAACGGGCAGCTGGGCTG
 CAGTGACCCCGCTTCTCACGCCAGTCCGACAAAGCGGCTCTCCAGCAAGAAGGTGGCAAGGTACCTG
 CACCAGTCAGGGGCCCTGACCATGGAGGCCCTGGAGGACCCTTCCCCGAGCTCATGGAGGGCCAGAGG
 AGGACATTGCTGACAAGTTGTCTTCTGGAAAGCGTGTGCTGGAGCTGAAAAGGACACGGCAGCCAC
 CGGTGAGCAACACAGCCGCTGAGGCAGGAGAACCTGCAGCTGGTGCACAGAGCAACGCCCTGGAGGAG
 CAGCTGAAGGAGCAGGAGCTGAGAGCCTGCGAGATGGTCCCTGGAAGAGACCCGGCGTCAGAAGGAGCTCC
 TGTGCAAGATGGAGAGGAGAAGAGCATTGAGATCGAGAACCTGCAGACCAGGCTACAGCAACTGGACGA
 GGAGAACAGTGAACCTCCGGTCTGCACGCCCTGTCTGAAGGCCAACATTGAGCGTCTGGAGGAGGAGAAG
 CAGAAGCTGTTGGATGAGATAGAGTCGCTGACGCTGCGGCTCAGTGAAGAGCAGGAGAACAAGAGGAGAA
 TGGGGGACAGGCTGAGTCACGAGAGGCACCAGTTCAGAGGGACAAGGAGGCCACCCAGGAGCTGATCGA
 GGACCTCCGAAAGCAGCTGGAGCACCTGCAGCTCCTCAAGCTGGAGGCCAGCAGCGGGGGCCGAGC
 AGCAGCATGGGCTGCAGGAGTACCACAGCCGCGCCGGGAGAGCGAGCTGGAGCAGGAGTCCGCAGGC
 TGAAGCAGGACAACCCCAACCTGAAGGAGCAGAACGAGGAGCTGAACGGGCAGATCATTACCTCAGCAT
 CCAGGGCCCAAGAGCCTTCTTCCACAGCCTTCTCTGAGTCCCTGGCTGCAGAGATCAGCTCCGTCTCC
 CGAGATGAGCTCATGGAGGCGATTGAGAAGCAGGAGGAGATCAACTTCCGCTGCAGGACTACATCGACA
 GGATCATCGTGGCCATCATGGAGACCAACCCGTCATCCTGGAGGTCAAG

ACGCGTACGCGGCCGCTCGAGCAGAACTCATCTCAGAAGAGGATCTGGCAGCAAATGATATCCTGGATT
 ACAAGGATGACGACGATAAGGTTTAA

Protein Sequence:

>RC227246 representing NM_001142272
 Red=Cloning site Green=Tags(s)

MPFLKANEVTD SAYMGSESTYSECETFTDEDTSTLVHPELQPEGDADSAGGS AVPSECLDAMEEPDHGAL
 LLLPGRPHPHGQSVITVIGGEEHFEDYGESEAE LSPETLCNGQLGCSDPAFLTPSPTKRLSSKKVARYL
 HQSGAL TMEALDPSPELMEGPEEDIADKVVFLERRVLELEKDTAATGEQHSRLRQENLQLVHRANALEE
 QLKEQELRACEMVLEETRRQKELLCKMEREKSIEIENLQTRLQQLDEENSELRSTPCLKANIERLEEEK
 QKLLDEIESLTLRLSEEQENKRRMGDRLSHERHQFQRDKEATQELIEDLRKQLEHLQLLKLEAEQRRGRS
 SSMGLQEYHSRARESELEQEVRRLLKQDNRNLKEQNEELNGQIITLSIQGAKSLFSTAFSES LAAEISSVS
 RDELMEAIQKQEEINFRLQDYIDRIIVAIMETNPSILEVK

TRTRPLEQKLISEEDLAANDILDYKDDDDKV

Chromatograms:

https://cdn.origene.com/chromatograms/mk8032_b01.zip

Restriction Sites:

SgfI-MluI

Cloning Scheme:

ACCN: NM_001142272

ORF Size: 1380 bp

OTI Disclaimer: The molecular sequence of this clone aligns with the gene accession number as a point of reference only. However, individual transcript sequences of the same gene can differ through naturally occurring variations (e.g. polymorphisms), each with its own valid existence. This clone is substantially in agreement with the reference, but a complete review of all prevailing variants is recommended prior to use. [More info](#)

OTI Annotation: This clone was engineered to express the complete ORF with an expression tag. Expression varies depending on the nature of the gene.

Components: The ORF clone is ion-exchange column purified and shipped in a 2D barcoded Matrix tube containing 10ug of transfection-ready, dried plasmid DNA (reconstitute with 100 ul of water).

- Reconstitution Method:**
1. Centrifuge at 5,000xg for 5min.
 2. Carefully open the tube and add 100ul of sterile water to dissolve the DNA.
 3. Close the tube and incubate for 10 minutes at room temperature.
 4. Briefly vortex the tube and then do a quick spin (less than 5000xg) to concentrate the liquid at the bottom.
 5. Store the suspended plasmid at -20°C. The DNA is stable for at least one year from date of shipping when stored at -20°C.

RefSeq: [NM_001142272.1](#), [NP_001135744.1](#)
RefSeq ORF: 1341 bp

Locus ID: 9727

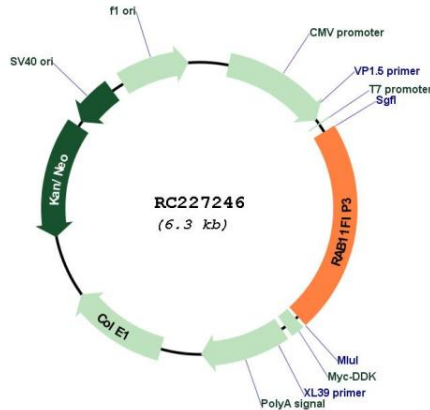
UniProt ID: [O75154](#)
Cytogenetics: 16p13.3

Protein Pathways: Endocytosis

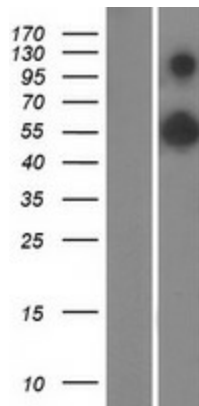
MW: 52.3 kDa

Gene Summary: Proteins of the large Rab GTPase family (see RAB1A; MIM 179508) have regulatory roles in the formation, targeting, and fusion of intracellular transport vesicles. RAB11FIP3 is one of many proteins that interact with and regulate Rab GTPases (Hales et al., 2001 [PubMed 11495908]). [supplied by OMIM, Mar 2008]

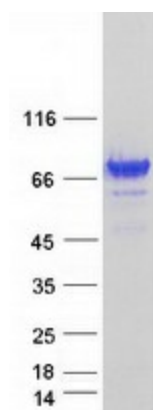
Product images:



Circular map for RC227246



Western blot validation of overexpression lysate (Cat# [LY427996]) using anti-DDK antibody (Cat# [TA50011-100]). Left: Cell lysates from untransfected HEK293T cells; Right: Cell lysates from HEK293T cells transfected with RC227246 using transfection reagent MegaTran 2.0 (Cat# [TT210002]).



Coomassie blue staining of purified RAB11FIP3 protein (Cat# [TP327246]). The protein was produced from HEK293T cells transfected with RAB11FIP3 cDNA clone (Cat# RC227246) using MegaTran 2.0 (Cat# [TT210002]).