

Product datasheet for **RC227243**

Invadolysin (LMLN) (NM_001136049) Human Tagged ORF Clone

Product data:

Product Type:	Expression Plasmids
Product Name:	Invadolysin (LMLN) (NM_001136049) Human Tagged ORF Clone
Tag:	Myc-DDK
Symbol:	Invadolysin
Synonyms:	GP63; INV; IX14; LMNL1; MSP
Mammalian Cell Selection:	Neomycin
Vector:	pCMV6-Entry (PS100001)
E. coli Selection:	Kanamycin (25 ug/mL)



[View online »](#)

**ORF Nucleotide
Sequence:**

>RC227243 representing NM_001136049
 Red=Cloning site Blue=ORF Green=Tags(s)

TTTTGTAATACGACTCACTATAGGGCGGCCGGGAATTCGTCGACTGGATCCGGTACCGAGGAGATCTGCC
 GCC**CGGATCGCC**

ATGGTAACGACGCTCGGCCGAAGATGGCGGCCGAATGGGGCGGAGGAGTGGGTTACTCGGGCTCAGGCC
 CGGGCCGAGCCGGTGGCGCTGGAGCGGTCTGTGTGGGTCCGAAGCGTTTTACTCCTGTTGGCGGGCT
 CCGGGCCAGCGCCACATCTACTCCCGTCTCCTTGGGCAGTTCCTCCCTCCCTGCCGGCACCAGTCCCTCT
 GACACTGAGGTCATAAATAAAGTTCATCTTAAGGCAAATCATGTGGTCAAGAGAGATGTTGATGAGCATT
 TAAGAATCAAGACTGTCTATGATAAAAGTGTGAAGAGTTGCTCCCTGAGAAAAAGAATCTGTAAAGAA
 CAAGCTTTTCCACAAGCGATTTCTTATTTAGAGAAGACTTTTCAGGTCCGTCGACTGCGGGCACTATC
 TTACTIONAGCAGACAATGTGCAACAAACCAATACCTCCGGAAGGAAAACGATCCTCACAGGTAAGTGCACCG
 GGGAGTGTGCCGACACAAAAGTGGCGCCCGTTATTGTTCTGAGGAACATCTCCAGCAATGCCGGGT
 CTACCGTGGGGTAAGTGGCCTCATGGAGCAGTGGGTGTCCAGACCAAGAAGGCATCTCAGATGCAGAC
 TTTGTTCTTTACGTTGGTCTCTGGCCACCGAGAGATGCAGCCATGAAAACATCATCTCTTATGCAGCCT
 ATTGTCAGCAGGAAGCAAACATGGACAGGCCAATAGCAGGATATGCTAACCTGTGTCCAATATGATCTC
 TACCCAGCCTCAGGAGTTTGTGGGATGCTGTCCACAGTAAACATGAGGTTATTCATGCCTGGGTTTC
 TCTGCTGGGCTGTTTGCATTCTACCATGATAAAGATGAAATCCTCTCACTTCAAGATTTGCAGATGGCC
 TCCCACCTTTAATTATAGTCTGGGATTATCAATGGAGTGATAAAGTAGTTCGAAAAGTGGAGAGATT
 ATGGGATGTTTCGAGATAAAGATAGTTCGTCACACTGTGTATCTCCTGGTAACGCCCTCGTGTGTTGAG
 GAAGCACGAAAACATTTGATTGTCCAGTCTAGAGGGAATGAACTTAAAAATCAAGGTGGTGTGGGCA
 CTGAGCTCAACCATTTGGGAAAAAAGGTTATTAGAGAATGAAGCGATGACTGGTTCTCACACTCAGAATCG
 AGTACTCTCTCGAATCACTCTGGCATTAAATGGAGGACACTGGCTGGTATAAAGCAAATTACAGCATGGCT
 GAGAAGTTAGACTGGGGCCGAGGAATGGCTGTGACTTTGTGAGGAAGAGCTGAAATTTGGATTGATC
 AGCAGAGACAAAAGAGACAGATGCTGAGCCCTACTGTGACACGCTCAGAAGTAACCCACTGCAGCTAAC
 TTGCAGACAGGACCAGAGAGCAGTTGCCGTGTGAATTTGCAGAAGTTCCCTAAGCCTTTACCACAGGAA
 TACCAGTACTTTGATGAACTCAGTGAATACCTGCAGAAGATTTGCCTTATTATGGTGGCTCCGTGGAAA
 TTGCTGACTACTGCCCTTTCAGTCAGGAATTCAGTTGGCATTAAAGTGGTGAATATCAGCGCAGCTCAGA
 TTGTAGAATATTGAAAATCAACCAGAAATTTTAAAGAACTATGGCGCTGAAAAGTATGGACCTCATTCC
 GTTTGTCTAATTCAGAAATCAGCATTTCGTTATGGAGAAGTGTGAGAGGAAGCTGAGTTACCCAGACTGGG
 GAAGCGGATGCTATCAGGTTTCTTGTCTCCTCAAGGTCTGAAAGTTTGGGTCCAAGATACTTCATATTT
 GTGTAGTCGGGCTGGGCAGGTCCTCCCTGTGAGTATCCAGATGAATGGCTGGATTACAGTGGAAACCTG
 CTCTGCCCATCATGTTGGGACTTCTGTGAGCTCTGTCTCCAGAAAACAGATCCTCCAGCCACTAACCTGA
 CCCGAGCTCTGCCACTTGATCTTTGTTCTCTCGAGCCTGGTGGTCACCCTCTGGCTTCTGCTAGG
 CAATCTGTTTCTCTGCTGGCTGGATTTCTTCTGTGTATATGGCAC

ACGCGTACGCGGCCGCTCGAGCAGAACTCATCTCAGAAGAGGATCTGGCAGCAAATGATATCCTGGATT
 ACAAGGATGACGACGATAAGGTTTAA

Protein Sequence: >RC227243 representing NM_001136049
Red=Cloning site Green=Tags(s)

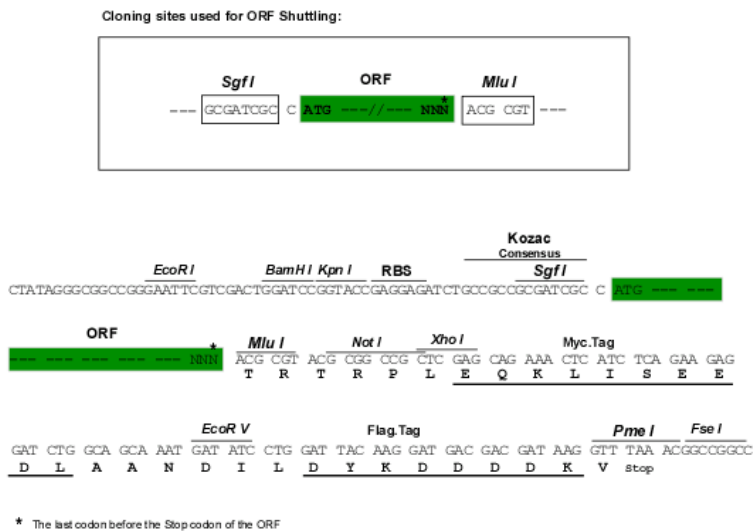
```
MVTTLGPKMAAEWGGGVGYSGSGPGRSRWRWVRSVLLLLGGLRASATSTPVSLGSSPPCRHHVPS
DTEVINKVHLKANHVVKRDVDEHLRIKTVYDKSVEELLPEKKNLVKNLFPQAISYLEKTFQVRRPAGTI
LLSRQCATNQYLKENDPHRYCTGECOAHTKCGPVIIVPEEHLQQCRVYRGGKWPFGAVGVPDQEGISDAD
FVLYV GALATERCSHENIISYAAQCQEQEANMDRPIAGYANLCPNMISTQPQEFVGM LSTVKHEVIHALGF
SAGLFAFYHDKDGNPLTSRFADGLPPFNYSGLYQWSDKVVRKVERLWDVRDNKIVRHTVYLLVTPRVVE
EARKHFDCPVLEGMELNQGGVGTLELNHWKRLLENEAMTGSHTQNRVLSRITLALMEDTGWYKANY SMA
EKLDWGRGMGCD FVRKSKFWIDQQRQRQMLSPYCDTLRSNPLQLTCRQDQRAVAVCNLQKFPKLPQE
YQYFDELSGIPAEDLPYYGGSVEIADYCPFSQEF SWHLSGEYQRSSDCRILENQPEIFKNYGAEKYGPS
VCLIQSAFVMEKCERKLSYPDWGSGCYQVSCSPQGLKVVWQDTSYLC SRAGQVLPVSIQMNQWIIHDGNL
LCPSCWDFCELPPETDPPATNLTRALPLDLCS CSSLVVTLWLLLGNLFLLAGFLLCIWH
```

TRTRPLEQKLISEEDLAANDILDYKDDDDKV

Chromatograms: https://cdn.origene.com/chromatograms/mk8006_e02.zip

Restriction Sites: SgfI-MluI

Cloning Scheme:



ACCN: NM_001136049

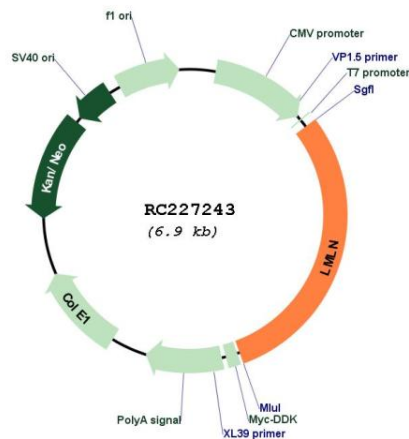
ORF Size: 2076 bp

OTI Disclaimer: The molecular sequence of this clone aligns with the gene accession number as a point of reference only. However, individual transcript sequences of the same gene can differ through naturally occurring variations (e.g. polymorphisms), each with its own valid existence. This clone is substantially in agreement with the reference, but a complete review of all prevailing variants is recommended prior to use. [More info](#)

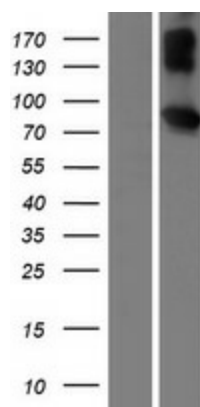
OTI Annotation: This clone was engineered to express the complete ORF with an expression tag. Expression varies depending on the nature of the gene.

Components:	The ORF clone is ion-exchange column purified and shipped in a 2D barcoded Matrix tube containing 10ug of transfection-ready, dried plasmid DNA (reconstitute with 100 ul of water).
Reconstitution Method:	<ol style="list-style-type: none"> 1. Centrifuge at 5,000xg for 5min. 2. Carefully open the tube and add 100ul of sterile water to dissolve the DNA. 3. Close the tube and incubate for 10 minutes at room temperature. 4. Briefly vortex the tube and then do a quick spin (less than 5000xg) to concentrate the liquid at the bottom. 5. Store the suspended plasmid at -20°C. The DNA is stable for at least one year from date of shipping when stored at -20°C.
Note:	Plasmids are not sterile. For experiments where strict sterility is required, filtration with 0.22um filter is required.
RefSeq:	<u>NM_001136049.2, NP_001129521.2</u>
RefSeq ORF:	2055 bp
Locus ID:	89782
UniProt ID:	<u>Q96KR4</u>
Cytogenetics:	3q29
Protein Families:	Druggable Genome, Protease, Transmembrane
MW:	77.9 kDa
Gene Summary:	This gene encodes a zinc-metallopeptidase. The encoded protein may play a role in cell migration and invasion. Studies of a similar protein in <i>Drosophila</i> indicate a potential role in mitotic progression. Alternatively spliced transcript variants have been described. [provided by RefSeq, Feb 2009]

Product images:



Circular map for RC227243



Western blot validation of overexpression lysate (Cat# [LY427793]) using anti-DDK antibody (Cat# [TA50011-100]). Left: Cell lysates from untransfected HEK293T cells; Right: Cell lysates from HEK293T cells transfected with RC227243 using transfection reagent MegaTran 2.0 (Cat# [TT210002]).