

Product datasheet for **RC227237**

PAFAH1B3 (NM_001145940) Human Tagged ORF Clone

Product data:

Product Type:	Expression Plasmids
Product Name:	PAFAH1B3 (NM_001145940) Human Tagged ORF Clone
Tag:	Myc-DDK
Symbol:	PAFAH1B3
Synonyms:	PAFAHG
Mammalian Cell Selection:	Neomycin
Vector:	pCMV6-Entry (PS100001)
E. coli Selection:	Kanamycin (25 ug/mL)
ORF Nucleotide Sequence:	>RC227237 ORF sequence Red=Cloning site Blue=ORF Green=Tags(s)

TTTTGTAATACGACTCACTATAGGGCGGCCGGAATTCGTCGACTGGATCCGGTACCGAGGAGATCTGCC
GCC**CGATCGCC**

ATGAGTGGAGAGGAGAAGCCAGCCAGCAAGCCACGCCGGTGCAGGACGTACAGGGCGACGGGCGCTGGA
TGTCCCTGCACCATCGGTTCTGGCTGACAGCAAAGATAAGGAACCCGAAGTCGTCTTCATCGGGGACTC
CTTGGTCCAGCTCATGCACCAAGTGCAGATCTGGCGGAGCTCTTCTCTCCTCTGCATGCACTTAACCTT
GGCATTGGTGGTACGGCACACAGCATGTACTGTGGCGGCTGGAGAATGGGGAGCTGGAACACATCCGGC
CCAAGATTGTGGTGGTCTGGGTGGGCACCAACAACCGACACACAGCAGAGCAGGTGACTGGTGGCAT
CAAGGCCATTGTGCAACTGGTGAATGAGCGACAGCCCCAGGCCCGGGTTGTGGTGTGGGCTGCTTCCG
CGAGGCCAACATCCCAACCCACTTCGGGAGAAGAACCGACAGGTGAACGAGCTGTTACGGCGGCGACTGG
CTGGCCACCCTCGGGCCCACTTCCTAGATGCCGACCCTGGCTTTGTGCACTCAGATGGCACCATCAGCCA
TCATGACATGTATGATTACCTGCATCTGAGCCGCTGGGCTACACACCTGTTTGGCCGGGCTCTGCACTCC
CTGCTTCTGCGTCTGCTGGCCCAAGACCAGGGCCAAGGTGCTCCCTGCTGGAGCCCGCACCC

ACGCGTACGCGGCCGCTCGAGCAGAACTCATCTCAGAAGAGGATCTGGCAGCAAATGATATCTGGATT
ACAAGGATGACGACGATAAGGTTTAA



[View online »](#)

Protein Sequence: >RC227237 protein sequence
 Red=Cloning site Green=Tags(s)

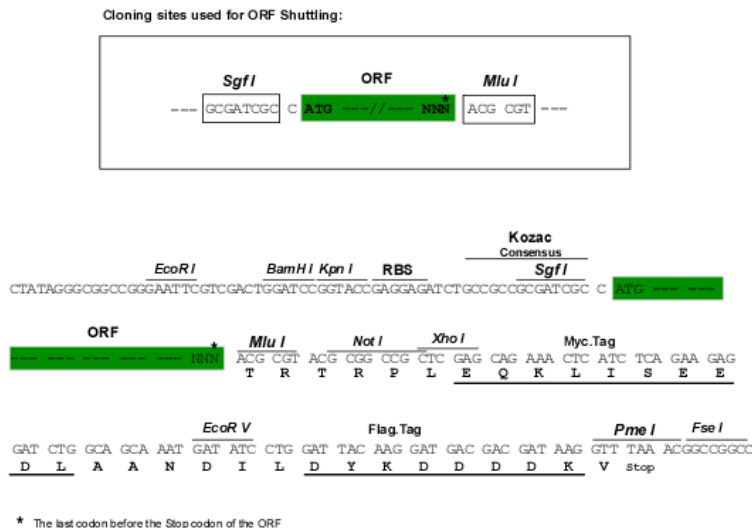
MSGREENPASKPTPVQDVQDGRWMSLHHRFVADSKDKEPEVVF IGDSLVLQMHQCEIWRELF SPLHALNF
 GIGGDGTQHVLRLENLEHIRPKIVVWVGTNNHGHTAEQVTGGIKAIVQLVNERQPQARVVVLGLLP
 RGQHPNPLREKNRQVNLVRAALAGHPRAHFLDADPGFVHSDGTISHHDMYDYLHLSRLGYTPVCRALHS
 LLLRLLAQDQGQGAPLLEPAP

TRTRPLEQKLISEEDLAANDILDYKDDDDKV

Chromatograms: https://cdn.origene.com/chromatograms/mk6083_b06.zip

Restriction Sites: SgfI-MluI

Cloning Scheme:



ACCN: NM_001145940

ORF Size: 693 bp

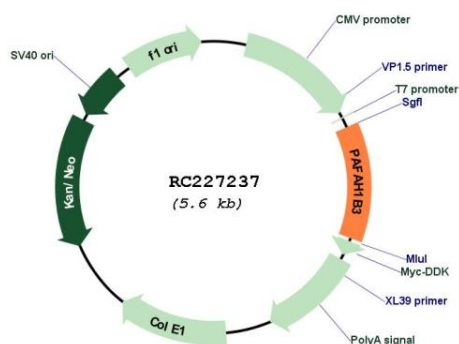
OTI Disclaimer: The molecular sequence of this clone aligns with the gene accession number as a point of reference only. However, individual transcript sequences of the same gene can differ through naturally occurring variations (e.g. polymorphisms), each with its own valid existence. This clone is substantially in agreement with the reference, but a complete review of all prevailing variants is recommended prior to use. [More info](#)

OTI Annotation: This clone was engineered to express the complete ORF with an expression tag. Expression varies depending on the nature of the gene.

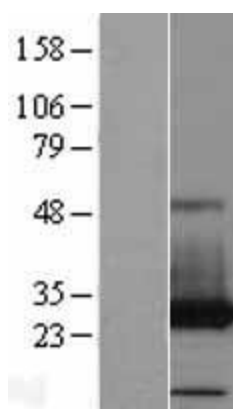
Components: The ORF clone is ion-exchange column purified and shipped in a 2D barcoded Matrix tube containing 10ug of transfection-ready, dried plasmid DNA (reconstitute with 100 ul of water).

Reconstitution Method:	<ol style="list-style-type: none"> 1. Centrifuge at 5,000xg for 5min. 2. Carefully open the tube and add 100ul of sterile water to dissolve the DNA. 3. Close the tube and incubate for 10 minutes at room temperature. 4. Briefly vortex the tube and then do a quick spin (less than 5000xg) to concentrate the liquid at the bottom. 5. Store the suspended plasmid at -20°C. The DNA is stable for at least one year from date of shipping when stored at -20°C.
RefSeq:	<u>NM_001145940.1, NP_001139412.1</u>
RefSeq Size:	869 bp
RefSeq ORF:	696 bp
Locus ID:	5050
UniProt ID:	<u>Q15102</u>
Cytogenetics:	19q13.2
Protein Families:	Druggable Genome
Protein Pathways:	Ether lipid metabolism, Metabolic pathways
MW:	25.7 kDa
Gene Summary:	<p>This gene encodes an acetylhydrolase that catalyzes the removal of an acetyl group from the glycerol backbone of platelet-activating factor. The encoded enzyme is a subunit of the platelet-activating factor acetylhydrolase isoform 1B complex, which consists of the catalytic beta and gamma subunits and the regulatory alpha subunit. This complex functions in brain development. A translocation between this gene on chromosome 19 and the CDC-like kinase 2 gene on chromosome 1 has been observed, and was associated with cognitive disability, ataxia, and atrophy of the brain. Alternatively spliced transcript variants have been described. [provided by RefSeq, Mar 2009]</p>

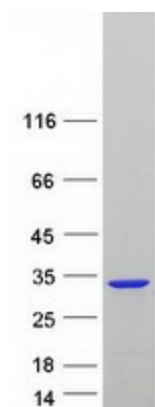
Product images:



Circular map for RC227237



Western blot validation of overexpression lysate (Cat# [LY429045]) using anti-DDK antibody (Cat# [TA50011-100]). Left: Cell lysates from untransfected HEK293T cells; Right: Cell lysates from HEK293T cells transfected with RC227237 using transfection reagent MegaTran 2.0 (Cat# [TT210002]).



Coomassie blue staining of purified PAFAH1B3 protein (Cat# [TP327237]). The protein was produced from HEK293T cells transfected with PAFAH1B3 cDNA clone (Cat# RC227237) using MegaTran 2.0 (Cat# [TT210002]).