

## Product datasheet for **RC227233**

### ZNF234 (NM\_001144824) Human Tagged ORF Clone

#### Product data:

Product Type:	Expression Plasmids
Product Name:	ZNF234 (NM_001144824) Human Tagged ORF Clone
Tag:	Myc-DDK
Symbol:	ZNF234
Synonyms:	HZF4; ZNF269
Mammalian Cell Selection:	Neomycin
Vector:	pCMV6-Entry (PS100001)
E. coli Selection:	Kanamycin (25 ug/mL)



[View online »](#)

ORF Nucleotide  
Sequence:

>RC227233 ORF sequence  
Red=Cloning site Blue=ORF Green=Tags(s)

TTTTGTAATACGACTCACTATAGGGCGGCCGGGAATTCGTCGACTGGATCCGGTACCGAGGAGATCTGCC  
GCCGCGATCGCC

ATGACCACATTCAAGGAGGGACTGACCTTCAAGGATGTGGCTGTGGTCTTCACTGAGGAGGAGCTGGGGC  
TGCTGGACCCTGTCCAGAGGAATCTGTACCAAGATGTGATGCTGGAGAATTTCAGGAACCTGCTGTCACT  
GGGGCATCACCCCTTCAAACATGATGATTCTTTTAGAAAAGGAAAAAAGCTTGATATAATGAAGACA  
GCAACTCAAAGAAAAGGAAATCAGCAGACAAGATCCAAAGTGAGGTGGAGACTGTTCCAGAAGCAGGAC  
GACATGAAGAGCTTTACTGGGGCAAATCTGGAACAGATTGCAAGTGATTAATCAAGTATGAAGACTC  
TATGATAAGTATTTCTCGGTTCCCCAGACAAGGTGATTTGTCCTGCCAGGTTAGGGCAGGACTATATACA  
ACTCACACAGGACAGAAATTTACCAATGTGATGAGTACAAAAATCCTTCACTGATGTCTTCAACTTTG  
ATCTTCATCAACAGTTACTACTCAGGAGAGAAGTCTCATACTGTGATGAGTGTGGAAAAAGCTTCTGTTA  
CATCTCAGCCCTTCATATTCATCAAAGAGTCCACATGGGAGAGAAATGCTATAAGTGTGACGTGTGTGGT  
AAGGAATTTAGTCAGAGCTCACATCTTCAAACATCAGAGAGTCCACACTGTAGAGAAACCATTCAAAT  
GTGTGGAATGTGGGAAAGGCTTCAGTCGTAGATCAACACTTACTGTACATTGCAAATTACTCAGGAGA  
GAAACCTTACAATTGTGAGGAATGTGGAAGGCCCTTCATACATGCTTCCCATCTTCAGGAACATCAGAGA  
ATTCATACTGGGAGAAACCATTCAAATGTGATACATGTGGTAAGAACTCCGTCGTAGATCAGCACTTA  
ATAATCATTGCATGGTCCACACAGGAGAGAAACCATACAAATGTGAGGACTGTGGTAAGTGTTCCTTGT  
TAGCTCAAACCTTCGATCCATCAAAGGTCACACAGGAGAGAAACCTTACAAGTGTGAAGAATGTGGT  
AAGTGTCTTATTCAGCCTTCACAATTCAGGCCATCGGAGAATCCACTGGAGAGAAACCATACGTAT  
GTAAAGTGTGGTAAGGGTTTCATTTACAGTTCAAGTTTTCAGGCCATCAGGGAGTCCACTGGAGA  
GAAGCCATACAAATGCAATGAGTGTGGGAAAGAGCTTCAGAATGAAAATTCATTATCAAGTGCATCTGGTA  
GTCCACACAGGGGAAAAACCTATAAATGTGAAGTATGTGGTAAAGCCTTCCGTCAGAGTTCATATCTTA  
AAATCCATCTGAAAGCACATAGTGTACAGAAACCTTTTAAAGTGTGAAGAGTGTGGCAGGGCTTCAATCA  
GAGCTCACGACTTCAGATTCACCAGCTGATCCATACCGGTGAGAAACCATACAAATGTGAAGAGTGC  
AAGGGATTTAGTCGTAGAGCAGATCTTAAATTCATTGTAGGATCCACACAGGGGAGAAACCATATAATT  
GTGAGGAGTGTGGGAAGGTCTTCAGTCAGGCCTCGCATCTTCTAACCCATCAGAGAGTTCACAGTGGGG  
AAAACCTTTAAATGTGAAGAGTGTGGGAAAGAGCTTCAGTCGGAGTGCACACCTTCAAGCCCATCAAAA  
GTCCACTGGAGAAAAGCCATACAAATGTGGGAGTGTGAAAGGGCTTCAAGTGGAGCTTGAACCTTG  
ACATGCATCAGAGGGTGCACACAGGAGAAAAACCTATACATGTGGGAGTGTGGGAAAGCACTTCAGTCA  
GGCCTCAAGTCTCCAACCTTCATCAGAGTGTCCACACAGGAGAGAAACCATACAAATGTGATGTATGTGGT  
AAAGTCTTCAGTCGGTCTTCAATACAGTATCATAGGCGAGTTCACACTGGGGAAAAACCTTACAAAT  
GTGAGATATGTGGTAAGAGGTTTCAGCTGGCGATCAAAATCTTGAAGTCAACAAAAATTCATGCTGCTGG  
TACATTTTATGAAAATGATGAGAATAGTAAGAACATCAGAGAGTGTGAGAGGGAGGAGTTCTACAAGG

ACGCGTACGCGGCCGCTCGAGCAGAACTCATCTCAGAAGAGGATCTGGCAGCAAATGATATCCTGGATT  
ACAAGGATGACGACGATAAGGTTTAA

**Protein Sequence:** >RC227233 protein sequence  
Red=Cloning site Green=Tags(s)

MTTFKEGLTFKDVAVVFTEELGLLDPVQRNLVQDVMLENFRNLLSVGHHPFKHDVFLLEKEKKLDIMKT  
 ATQRKGSADKIQSEVETVPEAGRHEELYWGQIWKQIASDLIKYEDSMISISRFPRQGDLSQVVRAGLYT  
 THTGQKFYQCDEYKKSFTDVFNFDLHQQLHSGEKSHTCDECGKSFICYISALHIHQRVHMGEKCYKCDVCG  
 KEFSQSSHLQTHQRVHTVEKPFKVCVECGKFSRRSTLTVHCKLHSGEKYPNCEECGRAFIHASHLQEQHQR  
 IHTGEKPFKCDTCGKNFRRRSALNNHCMVHTGEKPYKCEDCGKCFTCSSNLRHQVHTGEKPYKCEECG  
 KCFIQPSQFAHRRHTGEKPYVCKVCGKFIYSSSFQAHQGVHTGEKPYKNEECGKSFMRKIHYQVHLV  
 VHTGEKPYKCEVCGAFRQSSYLKIHLKAHSVQKPFKCEECGQGFNQSSRLQIHQLIHTGEKPYKCEECG  
 KGFRRADLKIHCRIHTGEKYPNCEECGVFSQASHLLTHQRVHSGEKPFKCEECGKFSRSAHLQAHQK  
 VHTGEKPYKCGECGKFWSLNLDMHQVHTGEKPYTCGECGKHSQASSLQLHQSVHTGEKPYKCDVCG  
 KVFSRSSQLQYHRRVHTGEKPYCEICGKRF SWRSNLVSHHKIHAAGTFYENDENSKNIRELSEGGSTR

TRTRPLEQKLISEEDLAANDILDYKDDDDKV

**Chromatograms:** [https://cdn.origene.com/chromatograms/mk6691\\_e01.zip](https://cdn.origene.com/chromatograms/mk6691_e01.zip)

**Restriction Sites:** SgfI-MluI

**Cloning Scheme:**



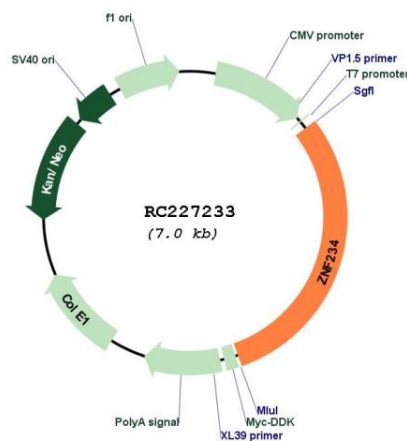
**ACCN:** NM\_001144824

**ORF Size:** 2100 bp

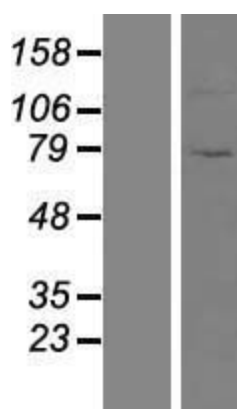
**OTI Disclaimer:** The molecular sequence of this clone aligns with the gene accession number as a point of reference only. However, individual transcript sequences of the same gene can differ through naturally occurring variations (e.g. polymorphisms), each with its own valid existence. This clone is substantially in agreement with the reference, but a complete review of all prevailing variants is recommended prior to use. [More info](#)

**OTI Annotation:** This clone was engineered to express the complete ORF with an expression tag. Expression varies depending on the nature of the gene.

<b>Components:</b>	The ORF clone is ion-exchange column purified and shipped in a 2D barcoded Matrix tube containing 10ug of transfection-ready, dried plasmid DNA (reconstitute with 100 ul of water).
<b>Reconstitution Method:</b>	<ol style="list-style-type: none"> <li>1. Centrifuge at 5,000xg for 5min.</li> <li>2. Carefully open the tube and add 100ul of sterile water to dissolve the DNA.</li> <li>3. Close the tube and incubate for 10 minutes at room temperature.</li> <li>4. Briefly vortex the tube and then do a quick spin (less than 5000xg) to concentrate the liquid at the bottom.</li> <li>5. Store the suspended plasmid at -20°C. The DNA is stable for at least one year from date of shipping when stored at -20°C.</li> </ol>
<b>RefSeq:</b>	<u>NM_001144824.2</u>
<b>RefSeq Size:</b>	4482 bp
<b>RefSeq ORF:</b>	2103 bp
<b>Locus ID:</b>	10780
<b>UniProt ID:</b>	<u>Q14588</u>
<b>Cytogenetics:</b>	19q13.31
<b>Protein Families:</b>	Transcription Factors
<b>MW:</b>	80.6 kDa
<b>Gene Summary:</b>	May be involved in transcriptional regulation.[UniProtKB/Swiss-Prot Function]

**Product images:**


Circular map for RC227233



Western blot validation of overexpression lysate (Cat# [LY428520]) using anti-DDK antibody (Cat# [TA50011-100]). Left: Cell lysates from untransfected HEK293T cells; Right: Cell lysates from HEK293T cells transfected with RC227233 using transfection reagent MegaTran 2.0 (Cat# [TT210002]).