

Product datasheet for **RC227229**

SLC25A44 (NM_001135672) Human Tagged ORF Clone

Product data:

| | |
|---------------------------|---|
| Product Type: | Expression Plasmids |
| Product Name: | SLC25A44 (NM_001135672) Human Tagged ORF Clone |
| Tag: | Myc-DDK |
| Symbol: | SLC25A44 |
| Synonyms: | FLJ90431; KIAA0446; OTTHUMP00000016580; RP11-54H19.3; solute carrier family 25, member 44 |
| Mammalian Cell Selection: | Neomycin |
| Vector: | pCMV6-Entry (PS100001) |
| E. coli Selection: | Kanamycin (25 ug/mL) |
| ORF Nucleotide Sequence: | >RC227229 representing NM_001135672 Red=Cloning site Blue=ORF Green=Tags(s) |

TTTTGTAATACGACTCACTATAGGGCGGCCGGAATTCGTCGACTGGATCCGGTACCGAGGAGATCTGCC
GCC**GCGATCGCC**

ATGGAGGACAAACGCAACATCCAGATCATCGAGTGGGAACACCTGGACAAGAAGAAGTTCTACGTGTTTG
GTGTGGCAATGACAATGATGATCCGTGTGTCAGTGTCTACCCATTCACCCTCATCCGCACCCGGTTGCAAGT
TCAGAAGGGGAAGAGCCTCTACCATGGGACCTTCGATGCCTTCATCAAGATCCTGCAGGCTGATGGACTT
CGCGGCTTCTATCGAGGCTATGTGGCTTCACTGCTTACCTATATCCCAAACAGTGTCTGTCTGGTGGCCCT
TCTATCACTTCTATGCAGAGCAGCTCTCCTACCTGTGTCCTAAGGAGTGCCTCACATTGTCTTTCAAGC
TGTCTCGGGCCCTGGCTGCAGCCACTGCCTCCATCCTACCAATCCCATGGATGTCATACGAACCCGT
GTGCAGGTTGAGGGCAAGAACTCCATCATCCTGACCTTCAGACAGCTGATGGCAGAAGAAGGCCCTGGG
GCCTCATGAAGGGCCTCTCGGCCAGAATCATCTCAGCCACACCTTCCACCATTGTATTGTGGTGGGCTA
TGAGAGCCTCAAGAACTCAGCCTCCGACCTGAGCTGGTGGACTCGAGACTGG

ACGCGTACGCGGCCGCTCGAGCAGAACTCATCTCAGAAGAGGATCTGGCAGCAAATGATATCCTGGATT
ACAAGGATGACGACGATAAGGTTTAA



[View online »](#)

Protein Sequence: >RC227229 representing NM_001135672
 Red=Cloning site Green=Tags(s)

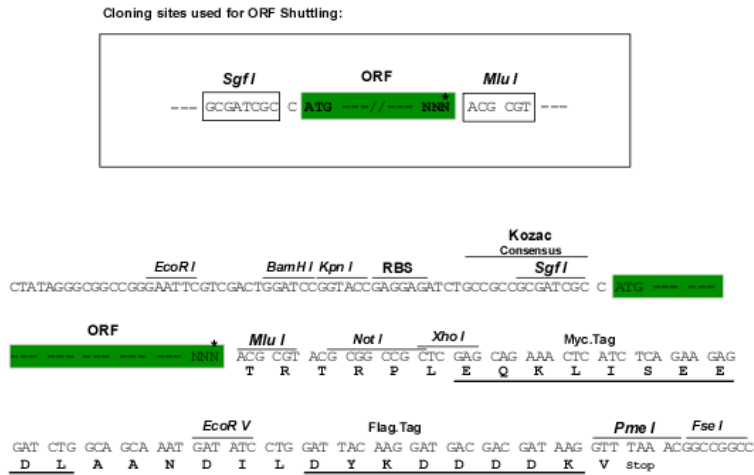
MEDKRNIIQIIEWEHLDKKKFYVFGVAMTMMIRVSVYPFTLIRTRLQVQKGKSLYHGTFDAFIKILQADGL
 RGFYRQYVASLLTYIPNSAVWWPFYHFYAEQLSYLCPKECPHIVFQAVSGPLAAATASILNPMDEVIRTR
 VQVEGKNSIILTFRQLMAEEGPWGLMKGLSARIISATPSTIVIVVGYESLKKLSLRPELVDSRHW

TRTRPLEQKLISEEDLAANDILDYKDDDDKV

Chromatograms: https://cdn.origene.com/chromatograms/ja1461_e04.zip

Restriction Sites: SgfI-MluI

Cloning Scheme:



* The last codon before the Stop codon of the ORF

ACCN: NM_001135672

ORF Size: 615 bp

OTI Disclaimer: The molecular sequence of this clone aligns with the gene accession number as a point of reference only. However, individual transcript sequences of the same gene can differ through naturally occurring variations (e.g. polymorphisms), each with its own valid existence. This clone is substantially in agreement with the reference, but a complete review of all prevailing variants is recommended prior to use. [More info](#)

OTI Annotation: This clone was engineered to express the complete ORF with an expression tag. Expression varies depending on the nature of the gene.

Components: The ORF clone is ion-exchange column purified and shipped in a 2D barcoded Matrix tube containing 10ug of transfection-ready, dried plasmid DNA (reconstitute with 100 ul of water).

Reconstitution Method:

1. Centrifuge at 5,000xg for 5min.
2. Carefully open the tube and add 100ul of sterile water to dissolve the DNA.
3. Close the tube and incubate for 10 minutes at room temperature.
4. Briefly vortex the tube and then do a quick spin (less than 5000xg) to concentrate the liquid at the bottom.
5. Store the suspended plasmid at -20°C. The DNA is stable for at least one year from date of shipping when stored at -20°C.

RefSeq: [NM_001135672.1](#), [NP_001129144.1](#)

RefSeq ORF: 617 bp

Locus ID: 9673

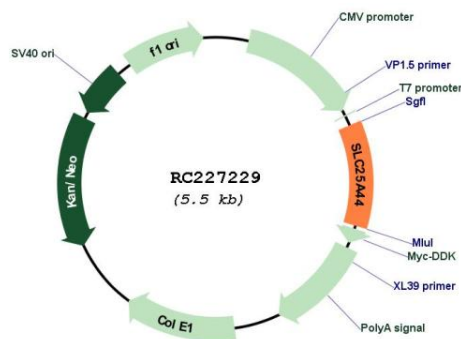
Cytogenetics: 1q22

Protein Families: Druggable Genome, Transmembrane

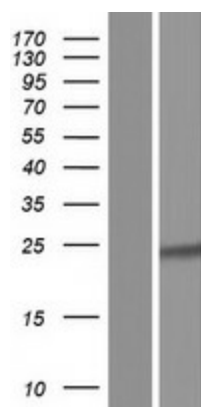
MW: 23.3 kDa

Gene Summary: SLC25A44 belongs to the SLC25 family of mitochondrial carrier proteins (Haitina et al., 2006 [PubMed 16949250]).[supplied by OMIM, Mar 2008]

Product images:



Circular map for RC227229



Western blot validation of overexpression lysate (Cat# [LY427662]) using anti-DDK antibody (Cat# [TA50011-100]). Left: Cell lysates from untransfected HEK293T cells; Right: Cell lysates from HEK293T cells transfected with RC227229 using transfection reagent MegaTran 2.0 (Cat# [TT210002]).