

Product datasheet for RC227222

Poliovirus Receptor (PVR) (NM_001135769) Human Tagged ORF Clone

Product data:

Product Type:	Expression Plasmids
Product Name:	Poliovirus Receptor (PVR) (NM_001135769) Human Tagged ORF Clone
Tag:	Myc-DDK
Symbol:	Poliovirus Receptor
Synonyms:	CD155; HVED; Necl-5; NECL5; PVS; TAGE4
Mammalian Cell Selection:	Neomycin
Vector:	pCMV6-Entry (PS100001)
E. coli Selection:	Kanamycin (25 ug/mL)
ORF Nucleotide Sequence:	>RC227222 representing NM_001135769 Red=Cloning site Blue=ORF Green=Tags(s)

TTTTGTAATACGACTCACTATAGGGCGGCCGGAATTCGTCGACTGGATCCGGTACCGAGGAGATCTGCC
GCC**CGATCGCC**

ATGGCCCGAGCCATGGCCCGCGTGGCCGCTGCTGCTGGTGGCGCTACTGGTGTCTCCTGGCCACCC
CAGGAACCGGGACGTCGTCGTCAGGCGCCACCCAGGTGCCCGGCTTCTGGGCGACTCCGTGACGCT
GCCCTGTACCTACAGGTGCCAACATGGAGGTGACGCATGTGTCACAGCTGACTGGGCGCGGCATGGT
GAATCTGGCAGCATGGCCGCTTCCACCAAACGCAGGGCCCCAGCTATTCGGAGTCAAACGGCTGGAAT
TCGTGGCAGCCAGACTGGGCGCGGAGCTGCGGAATGCCTCGTGAAGGATGTTTCGGTTGCGCGTAGAGGA
TGAAGGCAACTACACCTGCCTGTTTCGTCACGTTCCCGCAGGGCAGCAGGAGCGTGGATATCTGGCTCCGA
GTGCTTGCCAAGCCCCAGAACACAGCTGAGGTTTCAAGGTTCCAGCTCACTGGAGAGCCAGTGCCCATGG
CCCCTGCGTCTCCACAGGGGGTTCGCCCCAGCCAAATCACCTGGCACTCAGACCTGGGCGGGATGCC
CAATACGAGCCAGGTGCCAGGGTTCCTGTCTGGCACAGTCACTGTACCAGCCTCTGGATATTGGTGCC
TCAAGCCAGGTGGACGGCAAGATGTGACCTGCAAGGTGGAGCACGAGAGCTTTGAGAAGCCTCAGCTGC
TGACTGTGAACCTCACCGTGTACTACCCCCAGAGGTATCCATCTCTGGCTATGATAAACTGGTACCT
TGGCCAGAATGAGGCCACCCTGACCTGCGATGCTCGCAGCAACCCAGAGCCCACAGGCTATAATTGGAGC
ACGACCATGGGTCCCCTGCCACCCTTTGCTGTGGCCAGGGCGCCAGCTCCTGATCCGTCCTGTGGACA
AACCAATCAACACAACCTTAATCTGCAACGTACCAATGCCCTAGGAGCTCGCCAGGCAGAACTGACCGT
CCAGGTCAAAGGTACAGAGCATGCCAGCGCCTCAGCTAATGGGCATGTCTCCTATTAGCTGTGAGCAGA
GAGAACAGCTCTTCCAGGATCCACAGACAGAGGGCACAAAG

ACGCGTACGCGGCCGCTCGAGCAGAACTCATCTCAGAAGAGGATCTGGCAGCAAATGATATCCTGGATT
ACAAGGATGACGACGATAAGGTTTAA



[View online »](#)

Protein Sequence: >RC227222 representing NM_001135769
Red=Cloning site Green=Tags(s)

MARAMAAAWPLLLVALLVLSWPPPGTGDVVVQAPTQVPGFLGDSVTLPCYLQVPNMEVTHVSQLTWARHG
 ESGSMVAFHQQTQGPSYSESKRLEFVAARLGAELRNASLRMFGLRVEDEGNYTCLFVTFPQGSRSVDIWL
 VLAKPQNTAEVQKVQLTGEPVPMARCVSTGRRPPAQITWHSDLGGMPNTSQVPGFLSGTIVTSLWILVP
 SSQVDGKNVTCKVEHESFEKPOLLLTVNLTVYYPPEVSIISGYDNNWYLQNEATLTCDARSNPEPTGYNWS
 TTMGPLPPFAVAQGAQLLIRPVDPKINTTLICNVTNALGARQAEALTQVKGTEHASASANGHVSYSVAVSR
 ENSSSQDPQTEGTR

TRTRPLEQKLISEEDLAANDILDYKDDDDKV

Chromatograms: https://cdn.origene.com/chromatograms/mk8055_a01.zip

Restriction Sites: SgfI-MluI

Cloning Scheme:



ACCN: NM_001135769

ORF Size: 1092 bp

OTI Disclaimer: The molecular sequence of this clone aligns with the gene accession number as a point of reference only. However, individual transcript sequences of the same gene can differ through naturally occurring variations (e.g. polymorphisms), each with its own valid existence. This clone is substantially in agreement with the reference, but a complete review of all prevailing variants is recommended prior to use. [More info](#)

OTI Annotation: This clone was engineered to express the complete ORF with an expression tag. Expression varies depending on the nature of the gene.

Components: The ORF clone is ion-exchange column purified and shipped in a 2D barcoded Matrix tube containing 10ug of transfection-ready, dried plasmid DNA (reconstitute with 100 ul of water).

- Reconstitution Method:**
1. Centrifuge at 5,000xg for 5min.
 2. Carefully open the tube and add 100ul of sterile water to dissolve the DNA.
 3. Close the tube and incubate for 10 minutes at room temperature.
 4. Briefly vortex the tube and then do a quick spin (less than 5000xg) to concentrate the liquid at the bottom.
 5. Store the suspended plasmid at -20°C. The DNA is stable for at least one year from date of shipping when stored at -20°C.

RefSeq: [NM_001135769.3](#)

RefSeq ORF: 1095 bp

Locus ID: 5817

UniProt ID: [P15151](#)

Cytogenetics: 19q13.31

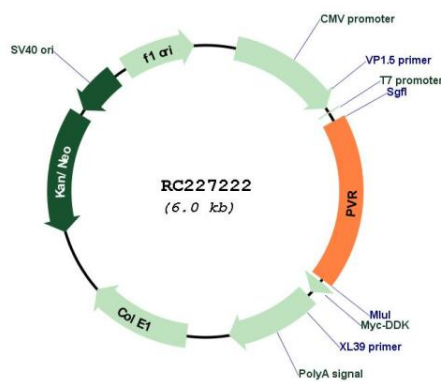
Protein Families: Druggable Genome, Transmembrane

Protein Pathways: Cell adhesion molecules (CAMs)

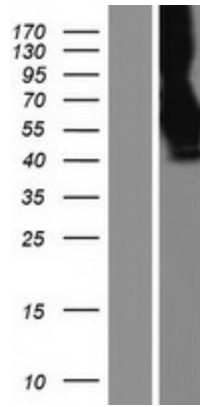
MW: 39.1 kDa

Gene Summary: The protein encoded by this gene is a transmembrane glycoprotein belonging to the immunoglobulin superfamily. The external domain mediates cell attachment to the extracellular matrix molecule vitronectin, while its intracellular domain interacts with the dynein light chain Tctex-1/DYNLT1. The gene is specific to the primate lineage, and serves as a cellular receptor for poliovirus in the first step of poliovirus replication. Multiple transcript variants encoding different isoforms have been found for this gene. [provided by RefSeq, Oct 2008]

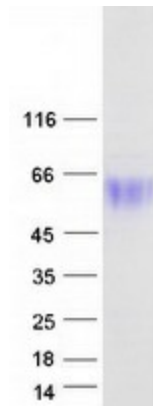
Product images:



Circular map for RC227222



Western blot validation of overexpression lysate (Cat# [LY427701]) using anti-DDK antibody (Cat# [TA50011-100]). Left: Cell lysates from untransfected HEK293T cells; Right: Cell lysates from HEK293T cells transfected with RC227222 using transfection reagent MegaTran 2.0 (Cat# [TT210002]).



Coomassie blue staining of purified PVR protein (Cat# [TP327222]). The protein was produced from HEK293T cells transfected with PVR cDNA clone (Cat# RC227222) using MegaTran 2.0 (Cat# [TT210002]).