

Product datasheet for RC227214

MEF2B (NM_001145785) Human Tagged ORF Clone

Product data:

Product Type: Expression Plasmids
Product Name: MEF2B (NM_001145785) Human Tagged ORF Clone
Tag: Myc-DDK
Symbol: MEF2B
Synonyms: RSRFR2
Mammalian Cell Selection: Neomycin
Vector: pCMV6-Entry (PS100001)
E. coli Selection: Kanamycin (25 ug/mL)
ORF Nucleotide Sequence: >RC227214 representing NM_001145785
 Red=Cloning site Blue=ORF Green=Tags(s)

TTTTGTAATACGACTCACTATAGGGCGCCGGGAATTCGTCGACTGGATCCGGTACCGAGGAGATCTGCC
 GCC**CGATCGCC**

ATGGGGAGGAAAAAATCCAGATCTCCCGCATCTGGACCAAAGGAATCGGCAGGTGACGTTACCAAGC
 GGAAGTTCGGGCTGATGAAGAAGGCCTATGAGCTGAGCGTGCTCTGTGACTGTGAGATAGCCCTCATCAT
 CTTCAACAGCGCCAACCGCCTCTCCAGTATGCCAGCACGGACATGGACCGTGTGCTGCTGAAGTACACA
 GAGTACAGCGAGCCCCACGAGAGCCGACCAACTGACATCCTCGAGACGCTGAAGCGGAGGGCATTG
 GCCTCGATGGGCCAGAGCTGGAGCCGGATGAAGGGCCTGAGGAGCCAGGAGAGAAGTTTCGGAGGCTGGC
 AGGCGAAGGGGGTGATCCGGCCTTGCCCGACCCCGGCTGTATCCTGCAGCTCCTGCTATGCCAGCCCA
 GATGTGGTATACGGGCCCTTACCGCCACAGGCTGTGACCCAGTGGGCTTGGGGAAGCACTGCCCGCC
 AGAGCCGCCATCTCCCTTCCGACCAGCAGCCCCAAAGCCGGGCCCCAGGCCTGGTGCACCCTCTCTT
 CTCACCAAGCCACCTCACCAGCAAGACACCACCCCACTGTACCTGCCGACGGAAGGGCGGAGGTGAGAC
 CTGCCTGGTGGCCTGGCTGGGCCCGAGGGGACTAAACACCTCCAGAAGCCTCTACAGTGGCCTGCAGA
 ACCCCTGCTCCACTGCAACTCCCGGACCCCACTGGGGAGCTTCCCTTCTCCCGGAGGCCCCCAAGA
 ATATGGCCTGGGAGACCCTCCACCGCCCTGGCTTGTGACGCCCCCACTGGCCCCCTGGCAGGCC
 TCGAGGGGTGATGGCCCCCGCGTGTCTCCAGCCAGTGGGGCCGAAGCCTGGCCGAGGAGGGTC
 CCCCAACCGCGCGCCTCCCGCCGACCCCACTCAGTCAAGTCTGAGCGCCTCTCTCCGGCCCC
 CGGGGGCCCCGGCGACTTTCCTAAGACCTTCCCTATCCCTTGCTCCTCGCCCGTCCCTGGCAGAGCCT
 CTGCGGCCTGGGCCCGCCTGCGCCGGCTGCCCTTGGCCGACGGCTGGCCCCGG

ACGCGTACGCGGCCGCTCGAGCAGAAACTCATCTCAGAAGAGGATCTGGCAGCAAATGATATCCTGGATT
 ACAAGGATGACGACGATAAGGTTAA



[View online »](#)

Protein Sequence: >RC227214 representing NM_001145785
Red=Cloning site Green=Tags(s)

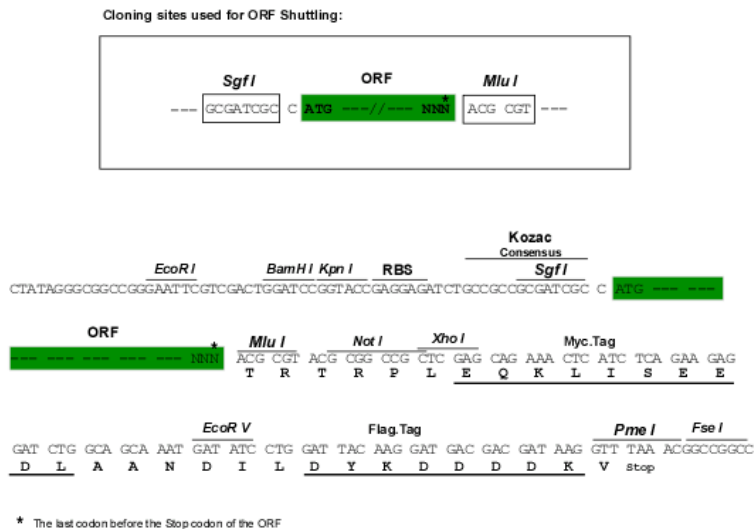
MGRKKIQISRILDQRNRQVTFTRKRFGLMKKAYELSVLCDCEIALIIFNSANRLFQYASTMDRVLLKYT
 EYSEPHESRTNTDILETLKRRGIGLDGPELEPDEGPEEPGEKFRRLAGEGGDPALPRRLYPAAPAMPSP
 DVVYGALPPPGLDPSGLGEALPAQSRSPFRPAAPKAGPPGLVHPLFSPSHLTSKTPPPL YLPTEGRRSD
 LPGGLAGPRGGLNTRSRLYSGLQNPCSTATPGPPLGSFPFLPGGPPEYGLGDP PPPPPGLLQPPTLAPWQP
 SRGDGPPAVSSQPSGGRSLGEEGPTRGASPPTPPVSIKSERLSPAPGGPGDFPKTFYPYPLLLARSLAEP
 LRPGPALRRLPLADGWPR

TRTRPLEQKLISEEDLAANDILDYKDDDDKV

Chromatograms: https://cdn.origene.com/chromatograms/mk8032_b06.zip

Restriction Sites: SgfI-MluI

Cloning Scheme:



ACCN: NM_001145785

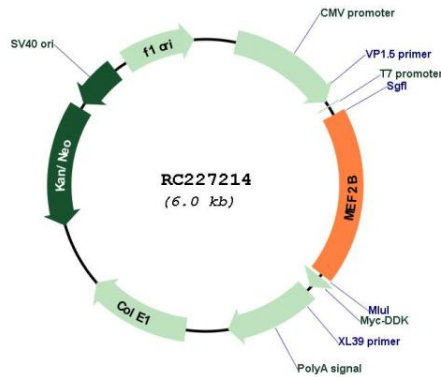
ORF Size: 1104 bp

OTI Disclaimer: Due to the inherent nature of this plasmid, standard methods to replicate additional amounts of DNA in E. coli are highly likely to result in mutations and/or rearrangements. Therefore, OriGene does not guarantee the capability to replicate this plasmid DNA. Additional amounts of DNA can be purchased from OriGene with batch-specific, full-sequence verification at a reduced cost. Please contact our customer care team at custsupport@origene.com or by calling 301.340.3188 option 3 for pricing and delivery.

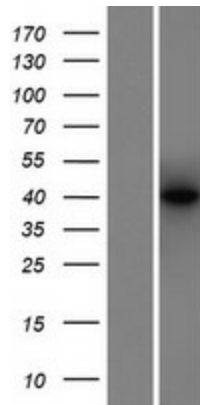
The molecular sequence of this clone aligns with the gene accession number as a point of reference only. However, individual transcript sequences of the same gene can differ through naturally occurring variations (e.g. polymorphisms), each with its own valid existence. This clone is substantially in agreement with the reference, but a complete review of all prevailing variants is recommended prior to use. [More info](#)

OTI Annotation:	This clone was engineered to express the complete ORF with an expression tag. Expression varies depending on the nature of the gene.
Components:	The ORF clone is ion-exchange column purified and shipped in a 2D barcoded Matrix tube containing 10ug of transfection-ready, dried plasmid DNA (reconstitute with 100 ul of water).
Reconstitution Method:	<ol style="list-style-type: none">1. Centrifuge at 5,000xg for 5min.2. Carefully open the tube and add 100ul of sterile water to dissolve the DNA.3. Close the tube and incubate for 10 minutes at room temperature.4. Briefly vortex the tube and then do a quick spin (less than 5000xg) to concentrate the liquid at the bottom.5. Store the suspended plasmid at -20°C. The DNA is stable for at least one year from date of shipping when stored at -20°C.
RefSeq:	NM_001145785.2
RefSeq ORF:	1107 bp
Locus ID:	100271849
UniProt ID:	Q02080
Cytogenetics:	19p13.11
MW:	39 kDa
Gene Summary:	The product of this gene is a member of the MADS/MEF2 family of DNA binding proteins. The protein is thought to regulate gene expression, including expression of the smooth muscle myosin heavy chain gene. This region undergoes considerable alternative splicing, with transcripts supporting two non-overlapping loci (GeneID 729991 and 100271849) as well as numerous read-through transcripts that span both loci (annotated as GeneID 4207). Several isoforms of this protein are expressed from either this locus or from some of the read-through transcripts annotated on GeneID 4207. [provided by RefSeq, Jan 2014]

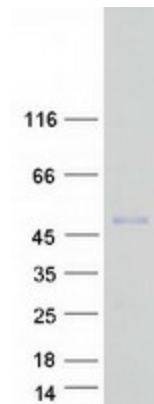
Product images:



Circular map for RC227214



Western blot validation of overexpression lysate (Cat# [LY429007]) using anti-DDK antibody (Cat# [TA50011-100]). Left: Cell lysates from untransfected HEK293T cells; Right: Cell lysates from HEK293T cells transfected with RC227214 using transfection reagent MegaTran 2.0 (Cat# [TT210002]).



Coomassie blue staining of purified MEF2B protein (Cat# [TP327214]). The protein was produced from HEK293T cells transfected with MEF2B cDNA clone (Cat# RC227214) using MegaTran 2.0 (Cat# [TT210002]).