

Product datasheet for **RC227199**

FAM157B (NM_001145249) Human Tagged ORF Clone

Product data:

Product Type:	Expression Plasmids
Product Name:	FAM157B (NM_001145249) Human Tagged ORF Clone
Tag:	Myc-DDK
Symbol:	FAM157B
Synonyms:	RP11-885N19.7
Mammalian Cell Selection:	Neomycin
Vector:	pCMV6-Entry (PS100001)
E. coli Selection:	Kanamycin (25 ug/mL)
ORF Nucleotide Sequence:	>RC227199 representing NM_001145249 Red=Cloning site Blue=ORF Green=Tags(s)

TTTTGTAATACGACTCACTATAGGGCGCCGGGAATTCGTCGACTGGATCCGGTACCGAGGAGATCTGCC
GCC**CGATCGCC**

ATGGGGCCTTTGTTCCACCACCATTCCTGGTGCCCATTCCTGGTCCCATGCGTCTCTGCCAAGAAACAGG
TAGAACCCATGGCAGTGCAGACTGCTTCTGGCAACTCCACCATGATCAGGCACACTTGTCCCATGTC
TGTCCTGTTGAGCCGGCAAGTCAAGGAAGTTGCTGCCAGAAACCAAGTGAGGACATTTACAAGAACCGG
CAGCGGGCCGAGCAGCAGCAGCAGCAGCAGCAGCAGCAGCAGCAACTGGATTTGCTTTTTACCAGAGGA
TCCAGATTTCCCTGTGGCCTCGAAACAAAAAAGAAGGAAGACGGAGCAGCACAGTCATCCCTTTGTGAA
AAAGGCATTAGGTTCTCCGCCGCCCTGGCTGCAGGCGCCCTCATCTAACAAGATGCTTCGGTCCATG
GGTGGAGGACAAAGGCCTATGGGCTTGGGAGCGAGTTCTTTCGTCTCCTACATGACCTTCATCTGCTCG
CGTTTGCCACGAAGCGCATCTGGATCCACCGGAGGGGCGAGGCCACAGCTCGACCGCAGCACCTGAGCA
TCCTGCACCGCCTGCGACGGCCGTAGGGGGCGGATGCCGCCTCACAGAACCTAAGCGGGCCCGGGT
TCCGGCACAGACGGCCTGCGGCTCAGGGGGCGGAGCCGAGCCGTCTCCTCAGGACCTACGAGGAGGCG
CCGTATCCCTACAGGGACCTGAGAGGGCCAGCCTCCTCCTCCTCAGGACCCACTCGGGAGACGCCG
CTGGCTCTTAGGAACACCTGGGACCGTGCCAGGGACGACCCAGCCTCCTCCTCAGCTCCTCAGG
AACGACTGGGAAGCTGTGGCTTCATGGTCCCCGAGGCTGCCGAGGAAAGGTATTTAGGACAGCCAGG
AGGGGGCGCACATCCGCCGCGAAACTGTGAGCAAGAGCGTCTGTGCTGAACCATGGCGCCACAGAGGGC
GCGCGATCCCGCCCAACCAACTTCCCGCTGAAGTGCCAGAAGCAGCGAGGAGTTCAACTTCTCAGGG
CAGCACGGGGTCTGTAAATTTGGTGTCTTCATTGATCCCAACAGTTATTGCTGTACCAGATTTGC
AGTGTCCACAAAATACTCCGGTATATTGTAC

ACGCGTACGCGGCCGCTCGAGCAGAACTCATCTCAGAAGAGGATCTGGCAGCAATGATATCCTGGATT
ACAAGGATGACGACGATAAGGTTTAA



[View online »](#)

Protein Sequence: >RC227199 representing NM_001145249
Red=Cloning site Green=Tags(s)

MGPLFTTIPGAHSGPMRPLPKKHVEPMAVRQLLLGNSTMIRHTCPMSVPLSRQVKEVAAQKPSEDIYKNR
 QRRQQQQQQQQQLDLLFHQRIQISLWPRKQRRKTEQHSHPFVKKAFRF SAGPGCRPSSNKMLRSM
 GGGQRPMLGSEFFRLLHDLHLLAFATKRIWIHRRGEATARPRAPEHPAPPATAVRGRDAASQNLKRRPG
 SGTDLRLQGAEPSRLLRITYAGGAVIPTGTPERAQPDPPLGRRRRLSRNTWGPWPGTTPPPSPQLLR
 NDWGS CGFMVPEAARGKVFQDSQEGAHIRRETVSKSVCAEPWRHQRRARDPAPT NFPLKCCQKQRGASTSSG
 QHGGRVNLVFFIDSPTVIAV PDLQCPTKYSGILY

TRTRPLEQKLISEEDLAANDILDYKDDDDKV

Chromatograms: https://cdn.origene.com/chromatograms/mk8032_b10.zip

Restriction Sites: SgfI-MluI

Cloning Scheme:



* The last codon before the Stop codon of the ORF

ACCN: NM_001145249

ORF Size: 1152 bp

OTI Disclaimer: The molecular sequence of this clone aligns with the gene accession number as a point of reference only. However, individual transcript sequences of the same gene can differ through naturally occurring variations (e.g. polymorphisms), each with its own valid existence. This clone is substantially in agreement with the reference, but a complete review of all prevailing variants is recommended prior to use. [More info](#)

OTI Annotation: This clone was engineered to express the complete ORF with an expression tag. Expression varies depending on the nature of the gene.

Components: The ORF clone is ion-exchange column purified and shipped in a 2D barcoded Matrix tube containing 10ug of transfection-ready, dried plasmid DNA (reconstitute with 100 ul of water).

- Reconstitution Method:**
1. Centrifuge at 5,000xg for 5min.
 2. Carefully open the tube and add 100ul of sterile water to dissolve the DNA.
 3. Close the tube and incubate for 10 minutes at room temperature.
 4. Briefly vortex the tube and then do a quick spin (less than 5000xg) to concentrate the liquid at the bottom.
 5. Store the suspended plasmid at -20°C. The DNA is stable for at least one year from date of shipping when stored at -20°C.

RefSeq: NM_001145249.1, NP_001138721.1

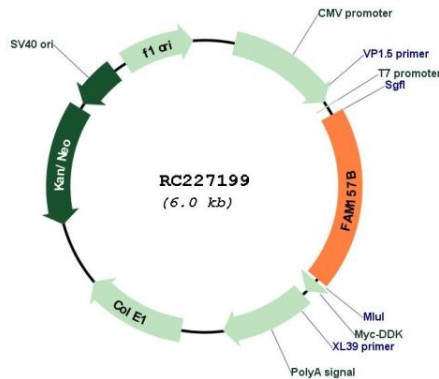
RefSeq ORF: 1155 bp

Locus ID: 100132403

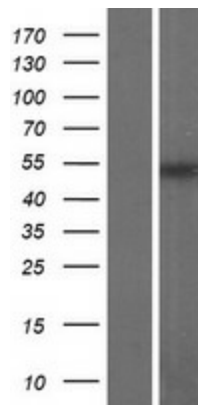
Cytogenetics: 9q34.3

MW: 42.9 kDa

Product images:



Circular map for RC227199



Western blot validation of overexpression lysate (Cat# [LY428760]) using anti-DDK antibody (Cat# [TA50011-100]). Left: Cell lysates from untransfected HEK293T cells; Right: Cell lysates from HEK293T cells transfected with RC227199 using transfection reagent MegaTran 2.0 (Cat# [TT210002]).