

## Product datasheet for **RC227190**

### **TOM1 (NM\_001135730) Human Tagged ORF Clone**

#### **Product data:**

|                           |  |
|---------------------------|--|
| Product Type:             | Expression Plasmids                        |
| Product Name:             | TOM1 (NM_001135730) Human Tagged ORF Clone |
| Tag:                      | Myc-DDK                                    |
| Symbol:                   | TOM1                                       |
| Mammalian Cell Selection: | Neomycin                                   |
| Vector:                   | pCMV6-Entry (PS100001)                     |
| E. coli Selection:        | Kanamycin (25 ug/mL)                       |



[View online »](#)

ORF Nucleotide  
Sequence:

>RC227190 representing NM\_001135730  
Red=Cloning site Blue=ORF Green=Tags(s)

TTTTGTAATACGACTCACTATAGGGCGGCCGGAATTCGTCGACTGGATCCGGTACCGAGGAGATCTGCC  
GCCGCGATCGCC

ATGGACTTTCTCCTGGGAACCCGTTCCAGTCTCCAGTGGGACAGCGCATCGAGAAAGCCACAGATGGT  
CCCTGCAGAGCGAGGACTGGGCCCTCAACATGGAGATCTGCGACATCATCAACGAGACGGAGGAAGTCC  
CAAAGATGCCCTCCGAGCAGTAAAGAAGAGAATCGTGGGAATAAGAACTTCCACGAGGTGATGCTGGT  
CTCACAGTCTTAGAAACCTGTGTCAAGAACTGCGGGCACCCTCCACGTGCTGGTGGCCAGCCAGGACT  
TCGTGGAGAGTGTGCTGGTGGAGACCATCTGCCCAAGAACAACCCACCCACCATCGTGCATGACAAAGT  
GCTCAACCTCATCCAGACCGTGTCAACTCAGAGACACAATCAGGACAGGATTCTGTGGGCACTGACTCC  
AGCCAGCAAGAGGACTCTGGCCAGCATGCTGCCCTCTGCCGCCGCCACTACTCTCCGGTGACACGC  
CCATAGCACCAACCCGGAACAGATTGGGAAGCTGCGCAGTGGAGTGGTGGTGGGAACTGGAG  
GGTGTGTCGGAGATGCTGACGGAGCTGGTGGCCACCCAGGCCGAGCCCGAGACCTGGAGCTGCTGCAG  
GAGCTCAACCGCAGTGGCCAGCCATGCAGCAGCGGGTCTGGAGCTCATCCCTCAGATCGCAATGAGC  
AGCTGACAGAGGAGCTGCTCATCGTCAATGACAATCTCAACAATGTGTTCTCGGCCATGAACGGTTTGA  
ACGGTTCCGAACAGGCCAGACCACCAAGGCCCAAGTGGAGCCGAGCCGGCAGCTGACCTGATCGACATG  
GGCCCTGACCCAGCAGCCACCGCAACCTCTCATCCAGCTGGCAGGAATGAACCTGGGCTCCAGCAGTG  
TGAGAGCTGGCCTGCAGTCTCTGGAGGCCCTCTGGTTCGACTGGAAGATGAGTTTGACATGTTTGGCCTGAC  
ACGGGGCAGCTCACTGGCTGACCAACGGAAGAGGTAAATACGAAGCCCCCAAGCAACAGACGGCCTG  
GCTGGAGCCCTGGACGCCCGCAGCAGACTGGCGCATCCCAGTCAACCCAGGCTGCCTCATGGAGG  
ACATCGAGCAGTGGTGTCCACTGACGTGGTAATGATGCGGAAGAGCCTAAGGGGTACCAGCGAAGA  
ATTTGACAAATTCCTGGAAGAACGGGCCAAAGCCGCGGACCGATTGCCCAACCTCTCCAGCCCTCAGCT  
GAGGGGCCCGGTCCCCATCTGCCCCAGGCCCGGAAGAAGACCCAGGAGAAAGATGATGACATGC  
TGTTTGCCTTA

ACGCGTACGCGGCCGCTCGAGCAGAACTCATCTCAGAAGAGGATCTGGCAGCAATGATATCCTGGATT  
ACAAGGATGACGACGATAAGGTTTAA

## Protein Sequence:

>RC227190 representing NM\_001135730  
Red=Cloning site Green=Tags(s)

MDFLLGNPFSSPVGQRIEKATDGSLSQSEDWALNMEICDIINETEEGPKDALRAVKKRIVGNKNFHEVMLA  
LTVLETCVKNCGHRFHVLVASQDFVESVLVRTILPKNNPPTIVHDKVLNLIQTVFNSETQSGQDSVGTDS  
SQQEDSGQHAAPLPAPPILSGDTPIAPTPEQIGKLRSELEMVSGNVRVMSEMLTELVTQAEPADLELLQ  
ELNRTCRAHQQRVLELIPQIANEQLTEELLIVNDLNNVFLRHERFERFRTGQTTKAPSEAEPADLIDM  
GPDPAATGNLSSQLAGMNLGSSSVRAGLSLEASGRLEDEFDMFALTRGSSLADQRKEVKYEAPQATDGL  
AGALDARQQSTGAIPVTQAACLMEDIAEQLWSTDVGNDAEPEPKGVTSEEFDKFLEERAKAADRLPNLSSPSA  
EGPPGPPSGPAPRKKTKQEKDDDMFLAL

TRTRPLEQKLISEEDLAANDILDYKDDDDKVV

## Chromatograms:

[https://cdn.origene.com/chromatograms/mk8032\\_c01.zip](https://cdn.origene.com/chromatograms/mk8032_c01.zip)

## Restriction Sites:

SgfI-MluI

**Cloning Scheme:**


**ACCN:** NM\_001135730

**ORF Size:** 1341 bp

**OTI Disclaimer:** The molecular sequence of this clone aligns with the gene accession number as a point of reference only. However, individual transcript sequences of the same gene can differ through naturally occurring variations (e.g. polymorphisms), each with its own valid existence. This clone is substantially in agreement with the reference, but a complete review of all prevailing variants is recommended prior to use. [More info](#)

**OTI Annotation:** This clone was engineered to express the complete ORF with an expression tag. Expression varies depending on the nature of the gene.

**Components:** The ORF clone is ion-exchange column purified and shipped in a 2D barcoded Matrix tube containing 10ug of transfection-ready, dried plasmid DNA (reconstitute with 100 ul of water).

**Reconstitution Method:**

1. Centrifuge at 5,000xg for 5min.
2. Carefully open the tube and add 100ul of sterile water to dissolve the DNA.
3. Close the tube and incubate for 10 minutes at room temperature.
4. Briefly vortex the tube and then do a quick spin (less than 5000xg) to concentrate the liquid at the bottom.
5. Store the suspended plasmid at -20°C. The DNA is stable for at least one year from date of shipping when stored at -20°C.

**RefSeq:** [NM\\_001135730.1](#), [NP\\_001129202.1](#)

**RefSeq ORF:** 1344 bp

**Locus ID:** 10043

**UniProt ID:** [O60784](#)

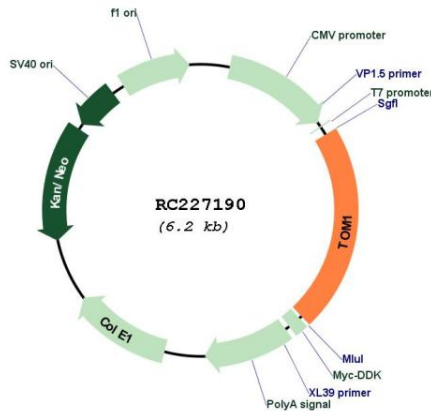
**Cytogenetics:** 22q12.3

**Protein Families:** Druggable Genome

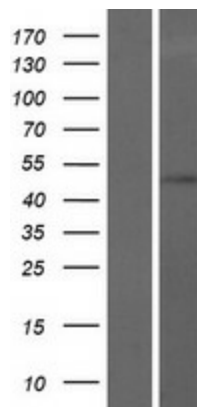
**MW:** 48.5 kDa

**Gene Summary:** This gene was identified as a target of the v-myb oncogene. The encoded protein shares its N-terminal domain in common with proteins associated with vesicular trafficking at the endosome. It is recruited to the endosomes by its interaction with endofin. Several alternatively spliced transcript variants encoding different isoforms have been found for this gene. [provided by RefSeq, Oct 2008]

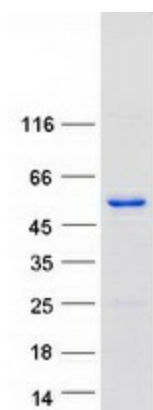
**Product images:**



Circular map for RC227190



Western blot validation of overexpression lysate (Cat# [LY427685]) using anti-DDK antibody (Cat# [TA50011-100]). Left: Cell lysates from untransfected HEK293T cells; Right: Cell lysates from HEK293T cells transfected with RC227190 using transfection reagent MegaTran 2.0 (Cat# [TT210002]).



Coomassie blue staining of purified TOM1 protein (Cat# [TP327190]). The protein was produced from HEK293T cells transfected with TOM1 cDNA clone (Cat# RC227190) using MegaTran 2.0 (Cat# [TT210002]).