

Product datasheet for **RC227189**

BAFF (TNFSF13B) (NM_001145645) Human Tagged ORF Clone

Product data:

Product Type:	Expression Plasmids
Product Name:	BAFF (TNFSF13B) (NM_001145645) Human Tagged ORF Clone
Tag:	Myc-DDK
Symbol:	BAFF
Synonyms:	BAFF; BLYS; CD257; DTL; TALL-1; TALL1; THANK; TNFSF20; TNLG7A; ZTNF4
Mammalian Cell Selection:	Neomycin
Vector:	pCMV6-Entry (PS100001)
E. coli Selection:	Kanamycin (25 ug/mL)
ORF Nucleotide Sequence:	>RC227189 representing NM_001145645 Red=Cloning site Blue=ORF Green=Tags(s)

TTTTGTAATACGACTCACTATAGGGCGGCCGGAATTCGTCGACTGGATCCGGTACCGAGGAGATCTGCC
GCC**CGATCGCC**

ATGGATGACTCCACAGAAAGGGAGCAGTCACGCCTTACTTCTTGCCTTAAGAAAAGAGAAGAAATGAAAC
TGAAGGAGTGTGTTTCCATCCTCCACGGAAGGAAAGCCCTCTGTCCGATCCTCAAAGACGGAAAGCT
GCTGGCTGCAACCTTGCTGCTGGCACTGCTGTCTTGTGCCTCACGGTGGTGTCTTTCTACCAGGTGGCC
GCCCTGCAAGGGGACCTGGCCAGCCTCCGGCAGAGCTGCAGGGCCACCACGCGGAGAAGCTGCCAGCAG
GAGCAGGAGCCCCAAGGCCGGCCTGGAGGAAGCTCCAGCTGTACCCGCGGGACTGAAAACTTTGAACC
ACCAGCTCCAGGAGAAGGCAACTCCAGTCAGAACAGCAGAAATAAGCGTGCCGTTTCCAGGTCAGAGAA
ACAGGATCTTACACATTTGTTCCATGGCTTCTCAGCTTTAAAAGGGGAAGTGCCCTAGAAGAAAAAGAGA
ATAAAATATTGGTCAAAGAACTGGTTACTTTTTATATATGGTCAGTTTTATATACTGATAAGACCTA
CGCCATGGGACATCTAATTCAGAGGAAGAAGGTCCATGTCTTTGGGGATGAATTGAGTCTGGTGACTTTG
TTTCGATGTATTCAAAATATGCCTGAAACACTACCAATAATTCCTGCTATTGAGCTGGCATTGCAAAAC
TGAAGAAGGAGATGAACTCCAATTGCAATACCAAGAGAAAAATGCACAAATATCACTGGATGGAGATGT
CACATTTTTTGGTGCATTGAAACTGCTG

ACGCGTACGCGGCCGCTCGAGCAGAAACTCATCTCAGAAGAGGATCTGGCAGCAAATGATATCCTGGATT
ACAAGGATGACGACGATAAGGTTTAA



[View online »](#)

Protein Sequence: >RC227189 representing NM_001145645
Red=Cloning site Green=Tags(s)

MDDSTEREQSRLTSLKKREEMKLKECVSILPRKESPSVRSSKDGKLLAATLLLALLSCCLTVVSFYQVA
 ALQGDLASLRAELQGHAEKLPAGAGAPKAGLEEAPAVTAGLKIPEPPAPGEGNSSQNSRNKRAVQGPEE
 TGSYTFVPWLLSFKRGSAL EEKENKILVKETGYFFIYGQVLYTDKTYAMGHLIQRKKVHVFGDEL SLVTL
 FRCIQNMPETLPNNSCYSAGIAKLEEGDELQLAIPRENAQISLDGDVTFFGALKLL

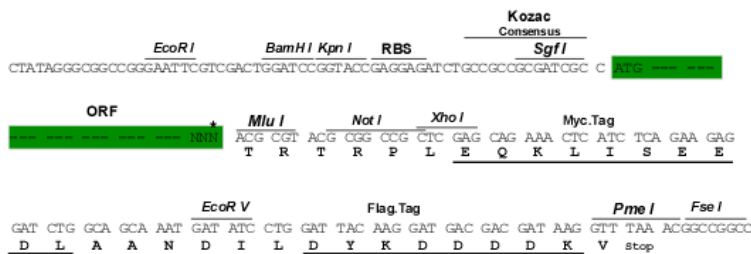
TRTRPLEQKLISEEDLAANDILDYKDDDDKV

Chromatograms: https://cdn.origene.com/chromatograms/mk8048_a09.zip

Restriction Sites: SgfI-MluI

Cloning Scheme:

Cloning sites used for ORF Shuttling:



* The last codon before the Stop codon of the ORF

ACCN: NM_001145645

ORF Size: 798 bp

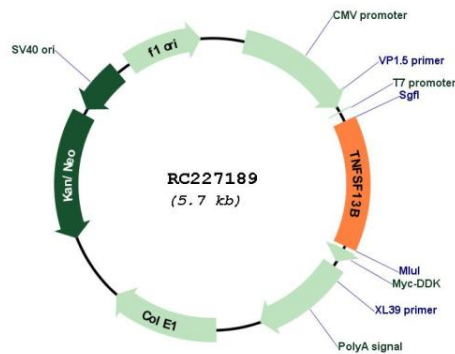
OTI Disclaimer: Due to the inherent nature of this plasmid, standard methods to replicate additional amounts of DNA in E. coli are highly likely to result in mutations and/or rearrangements. Therefore, OriGene does not guarantee the capability to replicate this plasmid DNA. Additional amounts of DNA can be purchased from OriGene with batch-specific, full-sequence verification at a reduced cost. Please contact our customer care team at custsupport@origene.com or by calling 301.340.3188 option 3 for pricing and delivery.

The molecular sequence of this clone aligns with the gene accession number as a point of reference only. However, individual transcript sequences of the same gene can differ through naturally occurring variations (e.g. polymorphisms), each with its own valid existence. This clone is substantially in agreement with the reference, but a complete review of all prevailing variants is recommended prior to use. [More info](#)

OTI Annotation: This clone was engineered to express the complete ORF with an expression tag. Expression varies depending on the nature of the gene.

Components:	The ORF clone is ion-exchange column purified and shipped in a 2D barcoded Matrix tube containing 10ug of transfection-ready, dried plasmid DNA (reconstitute with 100 ul of water).
Reconstitution Method:	<ol style="list-style-type: none"> 1. Centrifuge at 5,000xg for 5min. 2. Carefully open the tube and add 100ul of sterile water to dissolve the DNA. 3. Close the tube and incubate for 10 minutes at room temperature. 4. Briefly vortex the tube and then do a quick spin (less than 5000xg) to concentrate the liquid at the bottom. 5. Store the suspended plasmid at -20°C. The DNA is stable for at least one year from date of shipping when stored at -20°C.
RefSeq:	<u>NM_001145645.2</u>
RefSeq ORF:	801 bp
Locus ID:	10673
UniProt ID:	<u>Q9Y275</u>
Cytogenetics:	13q33.3
Protein Families:	Druggable Genome, Secreted Protein, Transmembrane
Protein Pathways:	Cytokine-cytokine receptor interaction
MW:	29 kDa
Gene Summary:	The protein encoded by this gene is a cytokine that belongs to the tumor necrosis factor (TNF) ligand family. This cytokine is a ligand for receptors TNFRSF13B/TACI, TNFRSF17/BCMA, and TNFRSF13C/BAFFR. This cytokine is expressed in B cell lineage cells, and acts as a potent B cell activator. It has been also shown to play an important role in the proliferation and differentiation of B cells. Alternatively spliced transcript variants encoding distinct isoforms have been identified. [provided by RefSeq, Mar 2011]

Product images:



Circular map for RC227189