

Product datasheet for **RC227172**

NELL1 (NM_201551) Human Tagged ORF Clone

Product data:

Product Type:	Expression Plasmids
Product Name:	NELL1 (NM_201551) Human Tagged ORF Clone
Tag:	Myc-DDK
Symbol:	NELL1
Synonyms:	IDH3GL; NRP1
Mammalian Cell Selection:	Neomycin
Vector:	pCMV6-Entry (PS100001)
E. coli Selection:	Kanamycin (25 ug/mL)



[View online »](#)

ORF Nucleotide
Sequence:

>RC227172 representing NM_201551
 Red=Cloning site Blue=ORF Green=Tags(s)

TTTTGTAATACGACTCACTATAGGGCGGCCGGGAATTCGTCGACTGGATCCGGTACCGAGGAGATCTGCC
 GCC**CGGATCGCC**

ATGCCGATGGATTGATTTTAGTTGTGTGTTCTGTGTGTGCACTGCCAGGACAGTGGTGGCTTTGGGA
 TGGACCTTGACCTTCAGATGGATATCGTCACCGAGCTTGACCTTGTGAACACCACCTTGGAGTTGCTCA
 GGTGTCTGGAATGCACAATGCCAGCAAAGCATTATTTATTTCAAGACATAGAAAGAGAGATCCATGCAGCT
 CCTCATGTGAGTGAGAAATTAATTCAGCTGTTCCGGAACAAGAGTGAATTCACCATTTTGGCCACTGTAC
 AGCAGAAGCCATCCACTTCAGGAGTGATACTGTCCATTGAGAACTGGAGCACAGCTATTTTGAAGTGGAA
 GAGCAGTGGCCTGAGGGATGAGATTCCGGTATCACTACATACACAATGGGAAGCCAAGGACAGAGGCCACTT
 CCTTACCGCATGGCAGATGGACAATGGCACAAGGTTGCACTGTGAGTTAGCGCCTCTCATCTCTGCTCC
 ATGTCGACTGTAAACAGGATTTATGAGCGTGTGATAGACCCTCCAGATACCAACCTTCCCCAGGAATCAA
 TTTATGGCTTGGCCAGCGCAACCAAAAGCATGGCTTATTTCAAAGGGATCATCCAAGATGGGAAGATCATC
 TTTATGCCGAATGGATATATAACACAGTGTCCAAATCTAAATCACACTTGCCCAACTGCAGTGATTCTCT
 TAAGCCTGGTGCAGGAATAATGGATTTACAAGAGCTTTTGGCCAAGATGACTGCAAAAATAAATATGCA
 AGAGACAAGACTTAGTCAATTGGAAAAGTGCATTGTGAGAAGACTTGTCAAGTGAAGTGGACTGCTCTAT
 CGAGATCAAGACTCTTGGGTAGATGGTGACCATTGCAGGAACTGCACTTGCAAAAAGTGGTGGCCGGAAT
 GCCGAAGGATGTCCTGTCCCCCTCTCAATTGCTCCCCAGACTCCCTCCAGTGCACATTGCTGGCCAGTG
 CTGTAAGTCTGCCGACCAAAAATGATCTATGGAGGAAAAGTCTTGCAGAAGGCCAGCGGATTTAACC
 AAGAGCTGTCCGGAATGCCGAGGTGGAGTTTGTAGTAAAAATTACAGAAAATGTGTCCTCTTTGAAGTGC
 CAGAAAAGGATCACATTTCTCTGAGAATCAGTGTGCTGCTGTGAGAGGTCACTAACTTTTGTGCAGA
 AGGACCTAAATGTGGTGAAAATCAGAGTGCAAAAGTGAATACAAAAGCTACTTGTGAGTGAAGAGT
 GGTACATCTCTGTCCAGGGAGACTCTGCCTACTGTGAAGATATTGATGAGTGTGAGTGAAGTGCATT
 ACTGTCATGCCAATACTGTGTGTCAACCTTCTGGGTATATCGCTGTGACTGTGCCAGGATACAT
 TCGTGTGGATGACTTCTTGTACAGAACACGATGAATGTGGCAGCGGCCAGCACAACCTGTGATGAGAA
 GCCATCTGCACCAACACTGTCCAGGGACACAGCTGCACCTGCAAACCGGGCTACGTGGGGAACGGGACCA
 TCTGCAGAGCTTCTGTGAAGAGGGCTGCAGATACGGTGAACGTGTGTGGCTCCCAACAAATGTGTCTG
 TCCATCTGGATTCACAGGAAGCCACTGCGAGAAAAGACATTGATGAATGTGCCTTAAGAAGTACACCTGT
 TGGAACGATTCTGCCTGCATCAACCTGGCAGGGGGCTTTGACTGTCTGTGCCCTCTGGGCCCTCTGCT
 CTGGTGTGCTCATGAAGGGGGGCTGAAGCACAATGGCCAGGTGTGGACCTTGAAAGAAGACAGGTG
 TTCTGTCTGCTCCTGCAAGGATGGCAAGATATTCTGCCGACGGACAGCTTGTGATTGCCAGAATCCAAGT
 GCTGACCTATTCTGTTGCCCAGAATGTGACACCAGAGTCAAAAGTCAATGTTTAGACCAAAATGGTCACA
 AGCTGTATCGAAGTGGAGACAAATGGACCATAGCTGTGAGCAGTGTCCGTGTCTGGAAGGAGAGGTAGA
 TTGCTGGCCACTCACTTGCCTCACTTGGAGCTGTGAGTATACAGCTATCTTAGAAGGGGAATGTTGTCCC
 CGCTGTGTCAGTGACCCCTGCCTAGCTGATAACATCACCTATGACATCAGAAAAACTTGCCTGGACAGCT
 ATGGTGTTCACGGCTTAGTGGCTCAGTGTGGACGATGGCTGGATCTCCCTGCACAACCTGTAATGCAA
 GAATGGAAGAGTCTGTTGTTCTGTGGATTTTGAAGTGTCTTCAAAAATAAT

ACGCGTACGCGGCCGCTCGAGCAGAAACTCATCTCAGAAGAGGATCTGGCAGCAATGATATCCTGGATT
 ACAAGGATGACGACGATAAGGTTTAA

Protein Sequence: >RC227172 representing NM_201551
 Red=Cloning site Green=Tags(s)

MPMDLILVVWFCVCTARTVVVFGMDPDLQMDIVTELDLVNTTLGVAQVSGMHNASKAFLFQDIEREIHAA
 PHVSEKLIQLFRNKSEFTILATVQQKPSTSGVILSIRELEHSYFELESSGLRDEIRYHYIHNGKPRTEAL
 PYRMADGQWHKVALSVSASHLLLVHDCNRIYERVIDPPDTNLPPIGWLWLGQRNQKHGLFKGIIQDGKII
 FMPNGYITQCPNLNHTCPTCSDFLSLVQGIMDLQELLAKMTAKLNYAETRLSQLENCHCEKTCQVSGLLY
 RDQDSWVDGDHCRNCTCKSGAVECRRMSCPPLNCSPLPVHIAQQCCKVCRPKCIYGGKVLAEQQRILT
 KSCRECRGGVLVKITEMCPPLNCSEKDHLIPENQCCRVCRGHNFCAEGPKCGENSECKNWNWTKATCECKS
 GYISVQGDSAYCEDIDECAAKMHYCHANTVCVNLPLGLYRCDVPGYIRVDDFSCTEHDECQSGQHNCDEN
 AICTNTVQGHSCCKPGYVNGTICRAFCEEGCRYGTCVAPNKCVCPSGFTGSHCEKDIDECALRHTTC
 WNDACINLAGGFDCPCSPGSCSGDCPHEGLKHNGQVWTLKEDRCSVCCKDKGIFCRRTACDCQNPS
 ADLFCCECDTRVTSQCLDQNGHKL YRSGDNWTHSCQQCRLEGEVDCWPLTCPNLSCYEYTAILEGECPC
 RCVSDPCLADNITYDIRKTCLDSYGVSRLLSGSVWTMAGSPCTTCKCKNGRVCCSVDFECLQNN

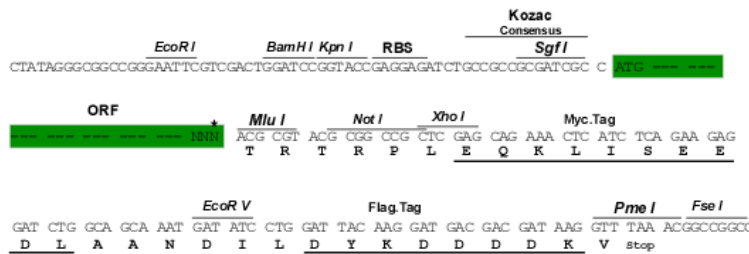
TRTRPLEQKLISEEDLAANDILDYKDDDDKV

Chromatograms: https://cdn.origene.com/chromatograms/mk8102_h01.zip

Restriction Sites: SgfI-MluI

Cloning Scheme:

Cloning sites used for ORF Shuttling:



* The last codon before the Stop codon of the ORF

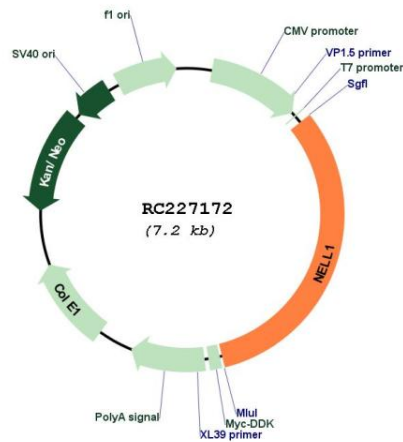
ACCN: NM_201551

ORF Size: 2289 bp

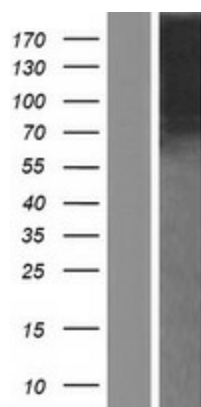
OTI Disclaimer: The molecular sequence of this clone aligns with the gene accession number as a point of reference only. However, individual transcript sequences of the same gene can differ through naturally occurring variations (e.g. polymorphisms), each with its own valid existence. This clone is substantially in agreement with the reference, but a complete review of all prevailing variants is recommended prior to use. [More info](#)

OTI Annotation: This clone was engineered to express the complete ORF with an expression tag. Expression varies depending on the nature of the gene.

Components:	The ORF clone is ion-exchange column purified and shipped in a 2D barcoded Matrix tube containing 10ug of transfection-ready, dried plasmid DNA (reconstitute with 100 ul of water).
Reconstitution Method:	<ol style="list-style-type: none"> 1. Centrifuge at 5,000xg for 5min. 2. Carefully open the tube and add 100ul of sterile water to dissolve the DNA. 3. Close the tube and incubate for 10 minutes at room temperature. 4. Briefly vortex the tube and then do a quick spin (less than 5000xg) to concentrate the liquid at the bottom. 5. Store the suspended plasmid at -20°C. The DNA is stable for at least one year from date of shipping when stored at -20°C.
RefSeq:	<u>NM_201551.2, NP_963845.1</u>
RefSeq Size:	3114 bp
RefSeq ORF:	2292 bp
Locus ID:	4745
UniProt ID:	<u>Q92832</u>
Cytogenetics:	11p15.1
Protein Families:	Secreted Protein
MW:	84.4 kDa
Gene Summary:	This gene encodes a cytoplasmic protein that contains epidermal growth factor (EGF)-like repeats. The encoded heterotrimeric protein may be involved in cell growth regulation and differentiation. A similar protein in rodents is involved in craniosynostosis. Alternative splicing results in multiple transcript variants. [provided by RefSeq, Dec 2013]

Product images:


Circular map for RC227172



Western blot validation of overexpression lysate (Cat# [LY430874]) using anti-DDK antibody (Cat# [TA50011-100]). Left: Cell lysates from untransfected HEK293T cells; Right: Cell lysates from HEK293T cells transfected with RC227172 using transfection reagent MegaTran 2.0 (Cat# [TT210002]).