

Product datasheet for **RC227147**

CCDC154 (NM_001143980) Human Tagged ORF Clone

Product data:

Product Type:	Expression Plasmids
Product Name:	CCDC154 (NM_001143980) Human Tagged ORF Clone
Tag:	Myc-DDK
Symbol:	CCDC154
Synonyms:	C16orf29
Mammalian Cell Selection:	Neomycin
Vector:	pCMV6-Entry (PS100001)
E. coli Selection:	Kanamycin (25 ug/mL)



[View online »](#)

ORF Nucleotide
Sequence:

>RC227147 representing NM_001143980
Red=Cloning site Blue=ORF Green=Tags(s)

TTTTGTAATACGACTCACTATAGGGCGGCCGGAATTCGTCGACTGGATCCGGTACCGAGGAGATCTGCC
GCC**CGGATCGCC**

ATGTCAGAGTTGGCTGACAGTGGACCCTCAGGGGCATCGGCCCTTCCCAGCTGAGAGCCGTCAACCCTGG
AAGACCTGGGGCTCCTCCTGGCAGGAGGCTGGCCAGCCCCGAGCCCTTGAGCCTGGAGGAGCTCTCGGA
GAGGTATGAGTCCAGCCATCCGACATCCACGGCCTCTGTCCCGAGCAGGACACCGCCAAGCACTGGAAC
CAGCTGGAGCAGTGGTGGTGGAGCTGCAGGCCGAGGTGGCTGCCTGCGGGAGCACAAGCAGCGTGTG
AGCGCGCCACGCGGAGCCTGCTGCGGGAGCTGCTCCAGGTGCGGGCCCGCTGCAGCTGCAGGGCTCAGA
GCTGAGGCAGTTGCAGCAGGAGGCGCGGCCAGCCAGGCCCCGAAAAGGAGGCGCCGGAGTTCTCT
GGTCTCCAGAACCAGATGCAGGCCCTGGACAAAAGGCTGGTGGAGGTCCGGGAAGCCTTGACCCGGCTCA
GGAGGAGCAGGTGCAACAGGAGGCGGAGAGAAGGGGCGCCGAGCAAGAGGCCGCTCAGACTGGCCAA
GCTGACCGACTTGTGCAGCAGGAGGAGCAGGGCCGGGAGGTGGCTGCGGCGCCCTGCAGAAGAACC
GAGGACAGCAGCCGGAGGGTGGACTGGAGGTGGCCAGAATGCAGGCCAGGTGACCAAGCTCGGCGAAG
AGGTGAGCCTGCGCTTCTGAAGAGGGAGGCCAAGCTGTGCGGCTTCTGCAGAAGAGCTTCTGGCCCT
GGAGAAGAGAATGAAGGCCTCGGAGAGCTCACGGCTGAAGCTGGAGGGCAGCCTGCGGGGCGAGCTGGAG
AGCCGGTGGGAGAAGCTTCGGGGCTGATGGAGGAGCGCTGCGGGCCCTGCAGGGGCGAGCATGAGGAGA
GCCACCTCCTGGAGCAGTGCAGGGCCTGGATGCTGCCGTGGCCAGCTGACCAAGTTTGTGCAGCAGAA
CCAGGCGTCGTGAACCGTGTCTACTGGCCGAGGAGAAAAGCCTGGGACGCCAAGGGGCGCTTGGAGGAA
AGCCGGCTGGGAGCTGGCCGCTATGTGCAGGAGAACCTGGAGGCCGACAGCTGGCTGGCGAGCTGG
CCCGGCAGGAGATGCATGGAGAGCTGGTGTCTCCGAGAGAAGAGCCGGGCTCTGGAGGCATCCGTGGC
GCAGCTGGCCGGCAGTTAAAGGAGCTGAGTGGCCATCTCCCGGCTCTGAGCAGCCGGCTCGATCTGCAG
GAGCAGATGCTGGCCTCAGGCTGTCCGAGGCAAAGACCGAATGGGAAGGTGCAGAGAGGAAGTCCCTGG
AGGACCTGGCCAGGTGGCGGAAGGAGGTGACCGAACACCTGCGAGGGGTGCGGGAGAAGGTGGATGGCCT
CCCCCAGCAGATAGAGAGTGTCTCCGACAAGTGCCTGCTTATAAGAGCGACTCAGACCTCAGGATTTCC
GCCGAAGCAAGGCCAGGGAGTTCAAGGTTGGGGCCCTGCGGCAGGAGCTGGCCACGCTACTATCATCCG
TGCAGCTGCTAAAGGAAGACAACCCTGGGCGGAAGATCGCGGAGATGCAGGGCAAGCTGGCCACGTTTCA
GAACCAATAATGAAGCTGGAAAAGTGCCTCCAGGCCAACAGACCATCCAGAACCTCAGGTTCAACACT
GAGGCCCGGCTGCGCACGCAGGAGATGGCCACCCTGTGGGAGAGTGTGCTCCGGCTGTGGAGTGAGGAGG
GCCCGCGGACGCCGCTGGGCAGCTGGAAGGCGCTCCCATCCCTGGTGAGGCCGCGGGTCTTCATCAAGGA
CATGGCGCCTGGCAAGGTGGTGGCCATGAAGTGTGGGGCGTGTACCAGGCTGTGAGGTGGCTGGCTGG
AAGGCGTCCCTCATAAAGCTCAGGGCCCTGCGGAGGCCAGGAGGGTCTGGAGAAGCCCCACAGCCAGG
AGCAGGTGCAGCAGCTCACACCCTCACTGTTTATCCAGAAA

ACGCGTACGCGGGCCGCTCGAGCAGAAACTCATCTCAGAAGAGGATCTGGCAGCAAATGATATCCTGGATT
ACAAGGATGACGACGATAAGGTTTAA

Protein Sequence: >RC227147 representing NM_001143980
Red=Cloning site Green=Tags(s)

MSELADSGPSGASAPSQLRAVTLEDLGLLLAGGLASPEPLSLEELSERYESHPTSTASVPEQDTAKHWN
 QLEQWVVELQAEVACLREHKQRCERATRSLLRELLQVRARVQLQGSSELRQLQQEARPAQAPEKEAPEFS
 GLQNQMQUALDKRLVEVREALTRLRRRQVQQAERRGAEQEAQLRLAKLTDLLQQEEQGREVACGALQKNQ
 EDSSRRVDLEVARMQAVTKLGEVSLRFLKREAKLCGFLOKSFLEALEKRMKASESSRLKLEGLRGELE
 SRWEKLRGLMEERLRALQGQHEESHLLLEQCQGLDAAVAQLTKFVQQNQASLNRVLLAEEKAWDAKGRLEE
 SRAGELAAVYQENLEAAQLAGELARQEMHGELVLLREKSRALASVAQLAGQLKELSGHLPALSSRLDLQ
 EQMLGLRLSEAKTEWEGAERKSLEDLARWRKEVTEHLRGVREKVDGLPQQIESVSDKCLLHKSDSDLRIS
 AEGKAREFKVGLRQELATLLSSVQLLKEDNPGRKIAEMQGKLATFQNQIMKLENCVQANKTIQNLRFNT
 EARLRTQEMATLWESVLRRLWSEEGPRTPLGSKALPSLVRPRVFIKDMAPGKVVPMNCWGVYQAVRWLRW
 KASLIKLRALRRPGGVLEKPHSQEVQVQLTPSLFIQK

TRTRPLEQKLISEEDLAANDILDYKDDDDKV

Chromatograms: https://cdn.origene.com/chromatograms/mk8032_c08.zip

Restriction Sites: SgfI-MluI

Cloning Scheme:



ACCN: NM_001143980

ORF Size: 2001 bp

OTI Disclaimer: The molecular sequence of this clone aligns with the gene accession number as a point of reference only. However, individual transcript sequences of the same gene can differ through naturally occurring variations (e.g. polymorphisms), each with its own valid existence. This clone is substantially in agreement with the reference, but a complete review of all prevailing variants is recommended prior to use. [More info](#)

OTI Annotation: This clone was engineered to express the complete ORF with an expression tag. Expression varies depending on the nature of the gene.

Components: The ORF clone is ion-exchange column purified and shipped in a 2D barcoded Matrix tube containing 10ug of transfection-ready, dried plasmid DNA (reconstitute with 100 ul of water).

- Reconstitution Method:**
1. Centrifuge at 5,000xg for 5min.
 2. Carefully open the tube and add 100ul of sterile water to dissolve the DNA.
 3. Close the tube and incubate for 10 minutes at room temperature.
 4. Briefly vortex the tube and then do a quick spin (less than 5000xg) to concentrate the liquid at the bottom.
 5. Store the suspended plasmid at -20°C. The DNA is stable for at least one year from date of shipping when stored at -20°C.

RefSeq: [NM_001143980.1](#), [NP_001137452.1](#)

RefSeq ORF: 2004 bp

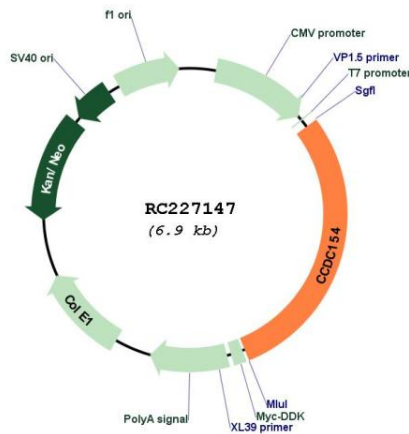
Locus ID: 645811

UniProt ID: [A6NI56](#)

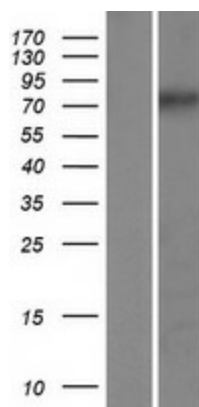
Cytogenetics: 16p13.3

MW: 75.2 kDa

Product images:



Circular map for RC227147



Western blot validation of overexpression lysate (Cat# [LY428440]) using anti-DDK antibody (Cat# [TA50011-100]). Left: Cell lysates from untransfected HEK293T cells; Right: Cell lysates from HEK293T cells transfected with RC227147 using transfection reagent MegaTran 2.0 (Cat# [TT210002]).