

Product datasheet for **RC227128**

CCDC124 (NM_001136203) Human Tagged ORF Clone

Product data:

Product Type: Expression Plasmids
Product Name: CCDC124 (NM_001136203) Human Tagged ORF Clone
Tag: Myc-DDK
Symbol: CCDC124
Mammalian Cell Selection: Neomycin
Vector: pCMV6-Entry (PS100001)
E. coli Selection: Kanamycin (25 ug/mL)
ORF Nucleotide Sequence: >RC227128 ORF sequence
Red=Cloning site Blue=ORF Green=Tags(s)

TTTTGTAATACGACTCACTATAGGGCGGCCGGAATTCGTCGACTGGATCCGGTACCGAGGAGATCTGCC
GCC**CGATCGCC**

ATGCCCAAGAAGTTCAGGGTGAGAACAACCAAGTCGGCAGCGGCCCGGGCACGGAGGGCAGAGGCCAAGG
CGGCCGCTGATGCCAAGAAGCAGAAGGAGCTGGAGGATGCCTACTGGAAGGACGACGACAAAACACGTCAT
GAGGAAGGAGCAGCGCAAGGAGGAGAAGGAGAAGCGGCCCTCGACCAGCTGGAACGTAGAAGGAGACG
CAGCGCCTACTGGAGGAGGAGGACTCCAAGCTCAAGGGCGGCAAGGCGCCGGGTGGCCACGTCACGCA
AGGTCACCCGGGCCAGATCGAGGACAGCTGCGCCGAGACCATCAGCTCAGGGAGGCCCGGACACAGC
CGAGAAAAGCCAAGAGCCATCTGGAGGTGCGCTGGAGGAGAACGTGAACCGCCGCTGCTGGAGGAGGGC
AGCGTGGAGGCGCGCACCATCGAGGACGCCATTGCAAGTGTCTCAGCGTGGCGGAGGAGGCGCCGACCGGC
ACCCAGAAAGACGCATGCGGGCAGCCTTACAGCCTTTGAGGAAGCCAGCTGCCCGGGCTCAAACAAGA
GAACCCCAACATGCGGCTGTCGACGCTGAAACAGCTGCTCAAGAAGGAGTGGCTCCGCTCTCCTGACAAC
CCCATGAACCAGCGGGCCGTCCTTCAATGCCCCCAAG

ACGCGTACGCGGCCGCTCGAGCAGAAACTCATCTCAGAAGAGGATCTGGCAGCAAATGATATCTGGATT
ACAAGGATGACGACGATAAGGTTTAA

Protein Sequence: >RC227128 protein sequence
Red=Cloning site Green=Tags(s)

MPKKFQGENTKSAARARRAEAKAAADAKKQKELEDAYWKDDDKHVMRKEQRKEEKEKRRLDQLERKKET
QRLLLEEEDSKLKGKAPRVATSSKVTRAQIEDTLRRDHQLREAPDTAEKAKSHLEVPLEENVNRRVLEEG
SVEARTIEDAIAVLSVAEEAADRHPERRMRAAFTAFEEAQLPRLKQENPNMRLSQLKQLLKEWLRSPDN
PMNQRAVFPNAPK

TRTRPLEQKLISEEDLAANDILDYKDDDDKV



Chromatograms: https://cdn.origene.com/chromatograms/mk6429_g04.zip

Restriction Sites: SgfI-MluI

Cloning Scheme:



ACCN: NM_001136203

ORF Size: 669 bp

OTI Disclaimer: The molecular sequence of this clone aligns with the gene accession number as a point of reference only. However, individual transcript sequences of the same gene can differ through naturally occurring variations (e.g. polymorphisms), each with its own valid existence. This clone is substantially in agreement with the reference, but a complete review of all prevailing variants is recommended prior to use. [More info](#)

OTI Annotation: This clone was engineered to express the complete ORF with an expression tag. Expression varies depending on the nature of the gene.

Components: The ORF clone is ion-exchange column purified and shipped in a 2D barcoded Matrix tube containing 10ug of transfection-ready, dried plasmid DNA (reconstitute with 100 ul of water).

Reconstitution Method:

1. Centrifuge at 5,000xg for 5min.
2. Carefully open the tube and add 100ul of sterile water to dissolve the DNA.
3. Close the tube and incubate for 10 minutes at room temperature.
4. Briefly vortex the tube and then do a quick spin (less than 5000xg) to concentrate the liquid at the bottom.
5. Store the suspended plasmid at -20°C. The DNA is stable for at least one year from date of shipping when stored at -20°C.

RefSeq: [NM_001136203.1](#), [NP_001129675.1](#)

RefSeq Size: 1004 bp

RefSeq ORF: 672 bp

Locus ID: 115098

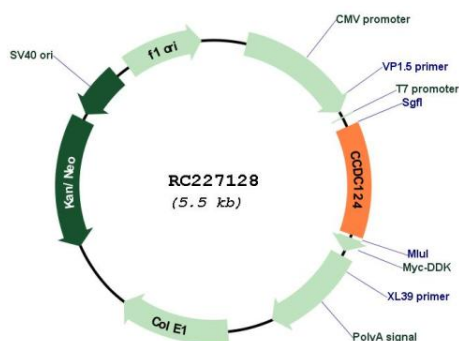
UniProt ID: [Q96CT7](#)

Cytogenetics: 19p13.11

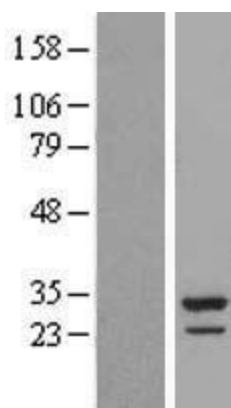
MW: 25.8 kDa

Gene Summary: Required for proper progression of late cytokinetic stages.[UniProtKB/Swiss-Prot Function]

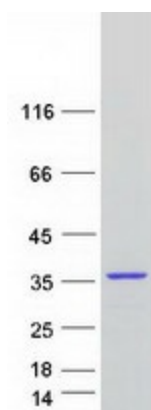
Product images:



Circular map for RC227128



Western blot validation of overexpression lysate (Cat# [LY427851]) using anti-DDK antibody (Cat# [TA50011-100]). Left: Cell lysates from untransfected HEK293T cells; Right: Cell lysates from HEK293T cells transfected with RC227128 using transfection reagent MegaTran 2.0 (Cat# [TT210002]).



Coomassie blue staining of purified CCDC124 protein (Cat# [TP327128]). The protein was produced from HEK293T cells transfected with CCDC124 cDNA clone (Cat# RC227128) using MegaTran 2.0 (Cat# [TT210002]).