

Product datasheet for **RC227127**

SLC37A2 (NM_001145290) Human Tagged ORF Clone

Product data:

Product Type:	Expression Plasmids
Product Name:	SLC37A2 (NM_001145290) Human Tagged ORF Clone
Tag:	Myc-DDK
Symbol:	SLC37A2
Synonyms:	pp11662
Mammalian Cell Selection:	Neomycin
Vector:	pCMV6-Entry (PS100001)
E. coli Selection:	Kanamycin (25 ug/mL)



[View online »](#)

ORF Nucleotide Sequence:

>RC227127 representing NM_001145290
 Red=Cloning site Blue=ORF Green=Tags(s)

TTTTGTAATACGACTCACTATAGGGCGGCCGGAATTCGTCGACTGGATCCGGTACCGAGGAGATCTGCC
 GCC**CGGATCGCC**

ATGCGGTCTCCCTGGCTCCGGGAGTCTGGTTCTCCGGGCTTCTCCAGGGACAGCTGGTTCAGAGGCC
 TCATCCTGCTGCTGACCTTCTAATTTACGCCTGCTATCACATGTCCAGGAAGCCTATCAGTATCGTCAA
 GAGCCGCTGCACCAGAAGTCTCGGAGCAGATCAAACCCATCAATGATACTCACAGTCTCAATGACACC
 ATGTGGTGCAGCTGGGCCCATTTGACAAGGACAACTATAAGGAGTTACTAGGGGGCGTGGACAACGCCCT
 TCCTCATCGCCTATGCCATCGGCATGTTTATCAGTGGGGTTTTGGGGAGCGGCTCCGCTCCGTTACTA
 CCTCTCAGCTGGAATGCTGCTCAGTGGCCTTTTACCTCGCTCTTGGCCTGGGATTTTCTGGAACATC
 CACGAGCTCTGGTACTTTGTGGTATCCAGGTCTGTAATGGACTCGTCCAGACCACAGGCTGGCCCTCTG
 TGGTGACCTGTGTGGCAACTGGTTCGGGAAGGGGAAGCGGGGTTTATCATGGGCATCTGGAATCCCA
 CACATCTGTGGCAACATCCTGGGCTCCCTGATCGCCGGCATCTGGGTGAACGGGCAGTGGGGCCTGTCCG
 TTCATCGTGCCTGGCATATTACTGCCGTATGGGCGTATCACCTTCTCTTCCATCGAACACCCAG
 AAGATGTGGACTGCGCCCTCCTCAGCACCACGGTGAGCCAGCTGAGAACCAGGACAACCCCTGAGGACCC
 TGGGAACAGTCCCTGCTATCAGGGAGAGCGCCTTGAGACTGTGGCCAAATGCTCCAAGGGGCCATGC
 GAAGAGCCTGCTGCCATCAGCTTCTTTGGGGCGCTCCGGATCCCAGGCGTGGTCGAGTTCTCTGTGTC
 TGCTGTTTGCCAAGCTGGTCACTACACCTTCTCTACTGGTGGCCCTTACATCGCCAATGTGGCTCA
 CTTTAGTGCCAAGGAGGCTGGGGACCTGTCTACACTCTTCGATGTTGGTGGCATCATAGGCGGCATCGTG
 GCAGGGCTCGTCTGACTACACCAATGGCAGGGCCACCACTTGCTGTGTATGCTCATCTGGTGGCC
 CCATGATGTTCTGTACAACATACATTGGCCAGGACGGGATTGCCAGCTCCATAGTATGATGCTGATCTG
 TGGGGCCTGGTCAATGGCCATACGCGCTCATACCACCTGCTGTCTGCTGATCTGGGACTACAAG
 AGCCTGAAGGGCAACGCCAAAGCCCTGTCCACGGTCACGGCCATCATTGACGGCACCGGCTCCATAGGTG
 CGGCTCTGGGGCCTCTGCTGGCTGGGCTCATCTCCCCACGGGCTGGAACAATGTCTTACATGCTCAT
 CTCTGCCGACGTCTAGCCTGCTTGTCTCTTGGCGTTAGTATACAAAGAGATCTTGGCCTGGAAGGTG
 TCCCTGAGCAGAGGCAGCGGTTAAAGAAATA

ACGCGTACGCGGCCGCTCGAGCAGAACTCATCTCAGAAGAGGATCTGGCAGCAAATGATATCCTGGATT
 ACAAGGATGACGACGATAAGGTTTAA

Protein Sequence:

>RC227127 representing NM_001145290
 Red=Cloning site Green=Tags(s)

MRSSLAPGVWFFRAFSRDSWFRGLILLTFLIYACYHMSRKPISIVKSRLHQNCSEQIKPINDTHSLNDT
 MWCSWAPFDKDYKELLGGVDNAFLIAYAIMFISGVFGERLPLRYL SAGMLLSGLFTSLFGLGYFWNI
 HELWYFVVIQVCNGLVQTTGWPSVVTVCGNWFGKGRGFIMGIWNSHTSVGNILGSLIAGIWNQWGLS
 FIVPGIITAVMGVITFLFLIEHPEDVDCAPPQHHEPAENQDNPDPGNSPCSIRESGLETVAKCSKGPC
 EEPAAISFFGALRIPGVVEFSLCLLFAKLVSYTFLYWLPYIANVAHFSAKEAGDLSTLFDVGGIIGGIV
 AGLVSDYTNGRATTCVMLILAAPMMFLYNYIGQDGIASSIVMLIICGGLVNGPYALITTAVSADLGT
 HKSLKGNALSTVTAIIDGTGSIGAALGPLLAGLISPTGWNVNFYMLISADVLACLLLCRLVYKEILAWKV
 SLSRGSGYKEI

TRTRPLEQKLISEEDLAANDILDYKDDDDKV

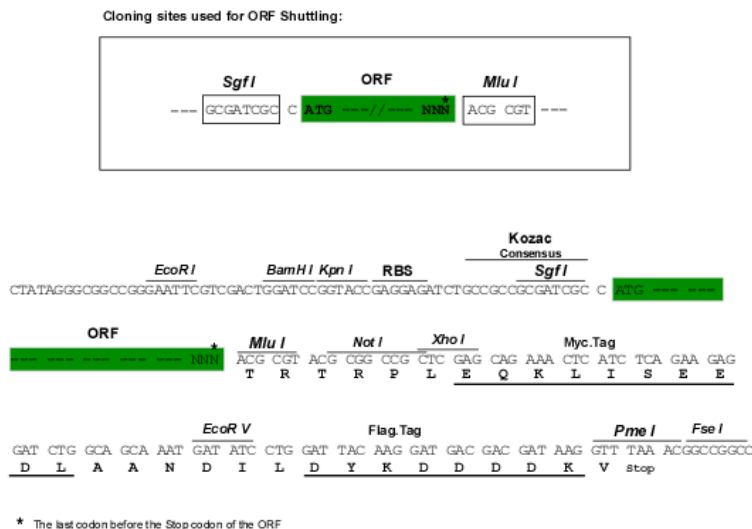
Chromatograms:

https://cdn.origene.com/chromatograms/mk8063_g05.zip

Restriction Sites:

Sgfl-Mlul

Cloning Scheme:



ACCN: NM_001145290

ORF Size: 1503 bp

OTI Disclaimer: The molecular sequence of this clone aligns with the gene accession number as a point of reference only. However, individual transcript sequences of the same gene can differ through naturally occurring variations (e.g. polymorphisms), each with its own valid existence. This clone is substantially in agreement with the reference, but a complete review of all prevailing variants is recommended prior to use. [More info](#)

OTI Annotation: This clone was engineered to express the complete ORF with an expression tag. Expression varies depending on the nature of the gene.

Components: The ORF clone is ion-exchange column purified and shipped in a 2D barcoded Matrix tube containing 10ug of transfection-ready, dried plasmid DNA (reconstitute with 100 ul of water).

- Reconstitution Method:
1. Centrifuge at 5,000xg for 5min.
 2. Carefully open the tube and add 100ul of sterile water to dissolve the DNA.
 3. Close the tube and incubate for 10 minutes at room temperature.
 4. Briefly vortex the tube and then do a quick spin (less than 5000xg) to concentrate the liquid at the bottom.
 5. Store the suspended plasmid at -20°C. The DNA is stable for at least one year from date of shipping when stored at -20°C.

RefSeq: [NM_001145290.2](#)

RefSeq ORF: 1506 bp

Locus ID: 219855

UniProt ID: [Q8TED4](#)

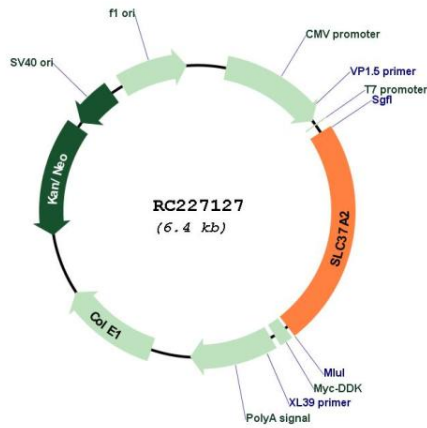
Cytogenetics: 11q24.2

Protein Families: Transmembrane

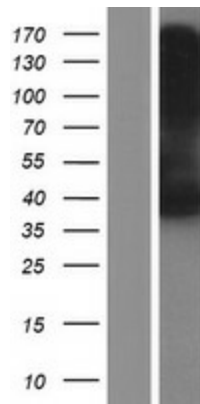
MW: 54.3 kDa

Gene Summary: Inorganic phosphate and glucose-6-phosphate antiporter. May transport cytoplasmic glucose-6-phosphate into the lumen of the endoplasmic reticulum and translocate inorganic phosphate into the opposite direction. Independent of a luminal glucose-6-phosphatase. May not play a role in homeostatic regulation of blood glucose levels.[UniProtKB/Swiss-Prot Function]

Product images:



Circular map for RC227127



Western blot validation of overexpression lysate (Cat# [LY428794]) using anti-DDK antibody (Cat# [TA50011-100]). Left: Cell lysates from untransfected HEK293T cells; Right: Cell lysates from HEK293T cells transfected with RC227127 using transfection reagent MegaTran 2.0 (Cat# [TT210002]).