

Product datasheet for RC227117

CHM (NM_001145414) Human Tagged ORF Clone

Product data:

Product Type: Expression Plasmids
Product Name: CHM (NM_001145414) Human Tagged ORF Clone
Tag: Myc-DDK
Symbol: CHM
Synonyms: DXS540; GGTA; HSD-32; REP-1; TCD
Mammalian Cell Selection: Neomycin
Vector: pCMV6-Entry (PS100001)
E. coli Selection: Kanamycin (25 ug/mL)
ORF Nucleotide Sequence: >RC227117 representing NM_001145414
Red=Cloning site Blue=ORF Green=Tags(s)

TTTTGTAATACGACTCACTATAGGGCGCCGGGAATTCGTCGACTGGATCCGGTACCGAGGAGATCTGCC
GCC**CGGATCGCC**

ATGGCGGATACTCTCCCTTCGGAGTTTGATGTGATCGTAATAGGGACGGGTTTCCTGAATCCATCATTG
CAGCTGCATGTTCAAGAAGTGGCCGGAGAGTTCTGCATGTTGATTCAAGAAGCTACTATGGAGGAACTG
GGCCAGTTTTAGCTTTTCAGGACTATTGCCTGGCTAAAGGAATACCAGGAAAACAGTGACATTGTAAGT
GACAGTCCAGTGTGGCAAGACCAGATCCTTAAAAATGAAGAAGCCATTGCTCTTAGCAGGAAGGACAAAA
CTATTCAACATGTGGAAGTATTTGTTATGCCAGGTCCACGCTGCTTTTA

ACGCGTACGCGGCCGCTCGAGCAGAAACTCATCTCAGAAGAGGATCTGGCAGCAAATGATATCCTGGATT
ACAAGGATGACGACGATAAGGTTTAA

Protein Sequence: >RC227117 representing NM_001145414
Red=Cloning site Green=Tags(s)

MADTLPSEFDVIVIGTGLPESIIAAACSRSGRRVLHVDSRSYYGGNWSFSFSGLLSWLKEYQENSIDIVS
DSPVWQDQILENEEAIALSRKDKTIQHVEVFCYARSTLLL

TRTRPLEQKLISEEDLAANDILDYKDDDDKV

Chromatograms: https://cdn.origene.com/chromatograms/mk8032_h07.zip

Restriction Sites: SgfI-MluI



[View online »](#)

Cloning Scheme:


ACCN: NM_001145414

ORF Size: 330 bp

OTI Disclaimer: The molecular sequence of this clone aligns with the gene accession number as a point of reference only. However, individual transcript sequences of the same gene can differ through naturally occurring variations (e.g. polymorphisms), each with its own valid existence. This clone is substantially in agreement with the reference, but a complete review of all prevailing variants is recommended prior to use. [More info](#)

OTI Annotation: This clone was engineered to express the complete ORF with an expression tag. Expression varies depending on the nature of the gene.

Components: The ORF clone is ion-exchange column purified and shipped in a 2D barcoded Matrix tube containing 10ug of transfection-ready, dried plasmid DNA (reconstitute with 100 ul of water).

- Reconstitution Method:**
1. Centrifuge at 5,000xg for 5min.
 2. Carefully open the tube and add 100ul of sterile water to dissolve the DNA.
 3. Close the tube and incubate for 10 minutes at room temperature.
 4. Briefly vortex the tube and then do a quick spin (less than 5000xg) to concentrate the liquid at the bottom.
 5. Store the suspended plasmid at -20°C. The DNA is stable for at least one year from date of shipping when stored at -20°C.

RefSeq: [NM_001145414.4](#)

RefSeq ORF: 333 bp

Locus ID: 1121

UniProt ID: [P24386](#)

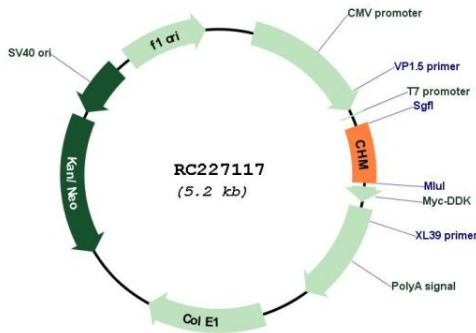
Cytogenetics: Xq21.2

Protein Families: Druggable Genome

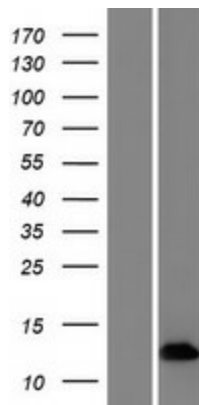
MW: 12.1 kDa

Gene Summary: This gene encodes component A of the RAB geranylgeranyl transferase holoenzyme. In the dimeric holoenzyme, this subunit binds unprenylated Rab GTPases and then presents them to the catalytic Rab GGTase subunit for the geranylgeranyl transfer reaction. Rab GTPases need to be geranylgeranylated on either one or two cysteine residues in their C-terminus to localize to the correct intracellular membrane. Mutations in this gene are a cause of choroideremia; also known as tapetochoroidal dystrophy (TCD). This X-linked disease is characterized by progressive dystrophy of the choroid, retinal pigment epithelium and retina. Alternatively spliced transcript variants have been found for this gene. [provided by RefSeq, Mar 2016]

Product images:



Circular map for RC227117



Western blot validation of overexpression lysate (Cat# [LY428873]) using anti-DDK antibody (Cat# [TA50011-100]). Left: Cell lysates from untransfected HEK293T cells; Right: Cell lysates from HEK293T cells transfected with RC227117 using transfection reagent MegaTran 2.0 (Cat# [TT210002]).