

## Product datasheet for **RC227106**

### WIBG (PYM1) (NM\_001143853) Human Tagged ORF Clone

#### Product data:

**Product Type:** Expression Plasmids  
**Product Name:** WIBG (PYM1) (NM\_001143853) Human Tagged ORF Clone  
**Tag:** Myc-DDK  
**Symbol:** WIBG  
**Synonyms:** PYM; WIBG  
**Mammalian Cell Selection:** Neomycin  
**Vector:** pCMV6-Entry (PS100001)  
**E. coli Selection:** Kanamycin (25 ug/mL)  
**ORF Nucleotide Sequence:** >RC227106 representing NM\_001143853  
 Red=Cloning site Blue=ORF Green=Tags(s)

TTTTGTAATACGACTCACTATAGGGCGGCCGGAATTCGTCGACTGGATCCGGTACCGAGGAGATCTGCC  
 GCC**CGATCGCC**

ATGGCGACTCCCTATGTTACTGACGAGACCGGGCAAGTATATCGCGTCAACACAGCGACCTGACGGGA  
 CCTGGCGCAAGCAGCGGAGGGTGAAGAAGGATATGTGCCCCAGGAGGAGTCCCAGTATATGAAAAACA  
 GTATGTGAAGTTTTCAAGAGTAAACCAGAGTTGCCCCAGGGCTAAGCCCTGAGGCCACTGCTCCTGTC  
 ACCCCATCCAGGCTGAAGGTGGTGAACCAGGCCCTCTCCAAGACGCCAAACGTAACCTGAAGCGAAAGG  
 AGAAGAGGCGGCAGCAGCAAGAGAAAGGAGAGGCAGAGGCCTTGAGCAGGACTCTTGATAAGGTGTCCCT  
 GGAAGAGACAGCCAACTCCCCAGTGCTCCACAGGGCTCTCGGGCAGCCCCACAGCTGCATCTGACCAG  
 CCTGACTCAGTGCCACCACTGAGAAAGCCAAGAAGATAAAGAACCTAAAGAAGAACTCCGGCAGGTGG  
 AAGAGTGCAGCAGCGGATCCAGGCTGGGGAAGTCAGCCAGCCCAGCAAAGAGCAGCTAGAAAAGCTAGC  
 AAGGAGGAGGGCGCTAGAAGAGGAGTTAGAGGACTTGAGTTAGGCCTC

**ACGCGT**ACGCGGCCGCTCGAGCAGAACTCATCTCAGAAGAGGATCTGGCAGCAATGATATCCTGGATT  
 ACAAGGATGACGACGATAAGGTTTAA

**Protein Sequence:** >RC227106 representing NM\_001143853  
 Red=Cloning site Green=Tags(s)

MATPYVTDETGGKYIASTQRPDGTWRKQRRVKEGYVPQEEVPVYENKYVFFKSKPELPPGLSPEATAPV  
 TPSRPEGGEPGLSKTAKRNLKRKEKRRQQEKGEAEALSRDLKVSLEETAQLPSAPQGSRAAPTAASDQ  
 PDSAATTEKAKKIKNLKKLRQVEELQQRIQAGEVSQPSKEQLEKLARRRALEEEELELGL

**TRTRPLEQKLI**SEEDLAANDILDYKDDDDKV



[View online »](#)

**Chromatograms:** [https://cdn.origene.com/chromatograms/mg4719\\_e09.zip](https://cdn.origene.com/chromatograms/mg4719_e09.zip)

**Restriction Sites:** SgfI-MluI

**Cloning Scheme:**



**ACCN:** NM\_001143853

**ORF Size:** 609 bp

**OTI Disclaimer:** The molecular sequence of this clone aligns with the gene accession number as a point of reference only. However, individual transcript sequences of the same gene can differ through naturally occurring variations (e.g. polymorphisms), each with its own valid existence. This clone is substantially in agreement with the reference, but a complete review of all prevailing variants is recommended prior to use. [More info](#)

**OTI Annotation:** This clone was engineered to express the complete ORF with an expression tag. Expression varies depending on the nature of the gene.

**Components:** The ORF clone is ion-exchange column purified and shipped in a 2D barcoded Matrix tube containing 10ug of transfection-ready, dried plasmid DNA (reconstitute with 100 ul of water).

**Reconstitution Method:**

1. Centrifuge at 5,000xg for 5min.
2. Carefully open the tube and add 100ul of sterile water to dissolve the DNA.
3. Close the tube and incubate for 10 minutes at room temperature.
4. Briefly vortex the tube and then do a quick spin (less than 5000xg) to concentrate the liquid at the bottom.
5. Store the suspended plasmid at -20°C. The DNA is stable for at least one year from date of shipping when stored at -20°C.

**RefSeq:** [NM\\_001143853.1](#), [NP\\_001137325.1](#)

**RefSeq ORF:** 612 bp

**Locus ID:** 84305

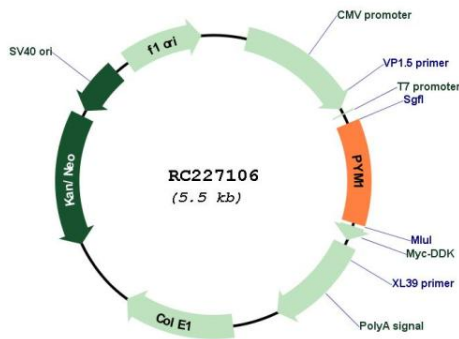
**UniProt ID:** [Q9BRP8](#)

**Cytogenetics:** 12q13.2

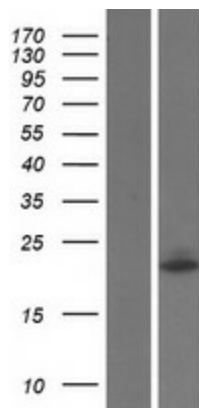
**MW:** 22.5 kDa

**Gene Summary:** Key regulator of the exon junction complex (EJC), a multiprotein complex that associates immediately upstream of the exon-exon junction on mRNAs and serves as a positional landmark for the intron exon structure of genes and directs post-transcriptional processes in the cytoplasm such as mRNA export, nonsense-mediated mRNA decay (NMD) or translation. Acts as an EJC disassembly factor, allowing translation-dependent EJC removal and recycling by disrupting mature EJC from spliced mRNAs. Its association with the 40S ribosomal subunit probably prevents a translation-independent disassembly of the EJC from spliced mRNAs, by restricting its activity to mRNAs that have been translated. Interferes with NMD and enhances translation of spliced mRNAs, probably by antagonizing EJC functions. May bind RNA; the relevance of RNA-binding remains unclear in vivo, RNA-binding was detected by PubMed:14968132, while PubMed:19410547 did not detect RNA-binding activity independently of the EJC.[UniProtKB/Swiss-Prot Function]

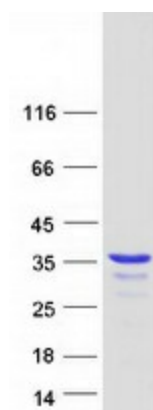
**Product images:**



Circular map for RC227106



Western blot validation of overexpression lysate (Cat# [LY428389]) using anti-DDK antibody (Cat# [TA50011-100]). Left: Cell lysates from untransfected HEK293T cells; Right: Cell lysates from HEK293T cells transfected with RC227106 using transfection reagent MegaTran 2.0 (Cat# [TT210002]).



Coomassie blue staining of purified PYM1 protein (Cat# [TP327106]). The protein was produced from HEK293T cells transfected with PYM1 cDNA clone (Cat# RC227106) using MegaTran 2.0 (Cat# [TT210002]).