

Product datasheet for **RC227096**

PCDH15 (NM_001142771) Human Tagged ORF Clone

Product data:

Product Type:	Expression Plasmids
Product Name:	PCDH15 (NM_001142771) Human Tagged ORF Clone
Tag:	Myc-DDK
Symbol:	PCDH15
Synonyms:	CDHR15; DFNB23; USH1F
Vector:	pCMV6-Entry (PS100001)
E. coli Selection:	Kanamycin (25 ug/mL)
Cell Selection:	Neomycin
ORF Nucleotide Sequence:	>RC227096 representing NM_001142771 Red=Cloning site Blue=ORF Green=Tags(s)

TTTTGTAATACGACTCACTATAGGGCGCCGGAATTCGTCGACTGGATCCGGTACCGAGGAGATCTGCC
GCC**CGATCGCC**

ATGTTTCGACAGTTTTATCTCTGGACATGTTTAGCTTCAGGGATCATCCTGGGCTCTCTCTTTGAAATCT
GCTTGGGCCAGTATGATGATGACTGGCAATATGAGGATTGCAAACAGCTAGGGGAGGACCACCAGCTAC
CATAGTTGCTATTGATGAAGAAAGTCGGAATGGTACAATTCTGGTGGACAACATGCTGATCAAAGGGACT
GCTGGAGGACCAGACCCACCATAGAATTTCTTTAAAGGATAATGTGGATTACTGGGTGTTGATGGATC
CTGTTAAGCAAATGCTTTTCTGAACAGCACCCGGAAGAGTTCTGGATAGAGATCCACCGATGAACATACA
CTCCATTGTGGTGCAGGTCCAGTGCATCAACAAAAAGTGGGCACTATTATCTACCATGAAGTGCGAATA
GTGGTGAGAGACAGGAATGACAACCTACCCACTTTCAAGCATGAAAGCTACTATGCCACAGTGAATGAGC
TCACTCCAGTTGGTACCACAATATTCACAGGATTTTCAGGAGACAATGGAGCTACAGATATAGATGATGG
ACCAATGGACAGATAGAGTATGTTATTCAGTATAATCCAGATGATCCGACATCCAATGACACCTTTGAA
ATTCCTTAATGTTGACTGGAAATATAGTGTAAAGGAAGAGGCTCAACTATGAAGATAAGACTCGCTACT
TTGTCATAATCCAAGCTAATGACCGTGCCAAAATCTGAATGAGAGGCGAACCACCACCACCTCAC
AGTGGATGTTCTGGATGGAGATGACTTGGGTCCAATGTTTCTTCTTGTCTTGTGCTTGTGCCAAACACTCGT
GATTGCCGTCCACTCACTTATCAAGCTGCCATACCTGAGTTGAGAACTCCGGAAGAACTGAACCCCATTA
TTGTTACGCCACCAATCCAAGCCATTGATCAGGACCGGAATATTCACCAGCCATCAGATAGGCCAGGAAT
CCTCTATTCCATCCTTGTGGGACTCCTGAGGATTACCCACGATTTTCCATATGCATCCTAGGACAGCA
GAACCTAGTCTCCTGGAGCCAGTAAACAGAGACTTTACCAGAAATTTGATTTGGTTATTAAGGCTGAAC
AAGACAATGGTCATCCTTCTGCTTTGCCGGTCTACACATTGAAATACTGGATGAAAACAATCAAAG
TCCATATTTACAATGCCAGTTATCAAGGCTATATCCTGGAATCTGCCAGTGGGAGCAACCATTTCCG
GACAGTCTCAATTTGACTTCACCTTTAAGAATAGTAGCTCTGGACAAGGACATAGAAGATACAAAAGACC
CAGAGCTTCACTTTTCTGAATGACTACACCTCAGTCTTACCCTCACACAGACTGGTATTACTCGCTA
CCTCACCTTACTTCAACCAAGTGGACAGGGAAGAAGCAAACTTACACCTTTTCGATAACAGCATTGAT
GGTGTAAGAAAGTGAAGCCAGTCATCGTCAATATTCAAGTATGGATGCAAATGATAACAGCCAACT



[View online »](#)

TCCCTGAAATATCCTATGATGTGTATGTTTATACAGACATGAGACCTGGGGACAGTGTGCATACAGCTCAC
 TGCAGTCGACGCAGACGAAGGGTCAAATGGGGAGATCACATATGAAATCCTTGTTGGGGCTCAGGGAGAC
 TTCATCATCAATAAAACAACAGGGCTTATCACCATCGCTCCAGGGGTGAAATGATAGTCGGGGCGGACTT
 ACGCACTACGGTCCAAGCAGCGGATAATGCTCCTCCTGCAGAGCGAAGGAACTCCATCTGCACTGTGTA
 TATTGAAGTGCTCCACCAAATAATCAAAGCCCTCCTCGTTCCACAGCTGATGATAGCCTTGAATTA
 AGTGAAGCCATGAGGGTGGTGTGTTTTATTAATCTACAGGCAACTGATCGAGAGGGAGACTCAATAA
 CATATGCCATTGAGAATGGAGATCCTCAGAGAGTTTTTAATCTTTCAGAAACCACGGGATTCTAACCTT
 AGGGAAAAGCACTGGACAGGGAAAAGCACTGATCGCTACATTCTGATCATCACAGCTTCAGATGGCAGGCCA
 GATGGGACCTCAACTGCCACAGTAAACATAGTGGTGACAGATGTCAATGACAATGCTCCAGTGTTTGATC
 CTTATCTGCCAAGAAATTTATCTGTGGTGAAGAAGAAGCCAATGCCTTTGTGGGTCAAGTAAAAGCAAC
 AGACCCTGATGCTGGAATAAATGGTCAAGTGCCTACAGTTTGGGTAACCTTAATAATCTTTTTCGTATC
 ACATCCAATGGGAGCATTACACAGCAGTGAAGCTAACAGAGAAGTCAGGGACTACTATGAACTTGTG
 TTGTGGCAACAGATGGAGCAGTACACCCTCGTCACTCAACTTAACTTGGCCATCAAGTTTTGGACAT
 TGATGATAACAGTCTGTGTTACCAATTCAACATACACTGTCTTGTGAAGAGAAATTTGCCAGCTGGG
 ACTACCATCCTTCAAATAGAGGCCAAAGATGTCGACCTTGGAGCAAATGTGTCTTACCGGATAAGAAGCC
 CAGAAGTGAAGCACTTTTTTGCCTACATCCATTTACAGGAGAATATCGCTTTTAAAGGAGTTTAGATTA
 TGAGGCATTTCCAGACCAAGAAGCAAGTATCACTTTTCTGGTAGAGGCCCTTGTATTTATGGAACAATG
 CCACCTGGTATTGCTACTGTACAGTGATTGTAAGGATATGAATGATTATCCTCCTGTCTTTAGTAAAC
 GAATATACAAAGGGATGGTGGCTCCGGATGCAGTCAAGGGTACACCTATCACAACAGTTTATGCTGAAGA
 TGCAGACCCTCCTGGATTACCTGCAAGTCGTGTGAGGTATAGAGTAGATGATGACAGTTTCTTACCTT
 GCCAGTATTTTTGAAGTGAAGAAGATTCTGGAAGAGTAATAACACGAGTCAATCTAATGAAGAACCTA
 CAACAATTTTTAAGTGGTGGTGGTGTCTTTGATGATGGGGAGCCTGTGATGTCCAGCAGTGCCACAGT
 GAAGATTTCTGTCTTACATCCTGGTGGAGATCCCACGCTTACACAGGAGGAATATAGACTCCTCCAGTA
 AGTGAACCTTGCACCAAAGGGACCATGGTTGGTGAATTTCTGCTGCTGCCATTAATCAAAGTATTGTGT
 ACTCCATTGTTTCAGAAATGAAGAAGATACATTTGGAATTAATAACATCACAGGTGTTATCTATGTGAA
 TGGACCTCTGGATTATGAGACCAGGACAAGCTATGTAATTCGAGTCCAAGCTGATCCCTGGAAAGTGGTC
 CTTGCCAATCTCCGAGTTCCTTCAAAAAGCAATACAGCTAAAGTATACATTGAGATTGAGGATGAAAATA
 ATCATCCCCAGTGTTCAGAAAAAATCTACATCGGAGGTGATCTGAAGATGCAAGAATGTTTACTTCT
 TGTACTCAGAGTGAAGGCTACTGATAAAGATACTGGCAATTATAGTGTGATGGCTACAGACTCATAATA
 CCACCAATTAAGAGGGAAAAGAAGGATTTGTAGTGGAAACATACAGGGCTTATCAAAGTGTCTATGC
 TCTTCCATAATATGAGGAGATCCTACTTCAAGTTTCAAGTATTGCAACTGACACTATGGGAAGGGACT
 GAGCGGCAAGGCCGATGTACTCGTCTCCGTGGTCAATCAGCTGGATATGCAAGTCAATGTTTCCAATGTG
 CCTCCTACTCTAGTGGAAAAAAGATAGAAGATCTTACAGAGATCTTGGATCGCTATGTTTCAAGAACAA
 TTCTGGTGGCAAGGTCGTAGTGGAGTCCATTGGAGCTCGCCGGCATGGAGATGCCTTTTCCCTAGAAGA
 TTACACCAAAATGTGACTTACTGTCTATGCAATTGACCCCAACCAACAGGCCATCGATAGAAATGAG
 CTTTTTAAATTTTTGGATGGCAAACTACTTGATATCAATAAAGACTTTCAGCCGATTATGGGGAAGGAG
 GACGCATTCTGGAGATCCGGACTCCAGAGGCAGTGACCAGCATTAAAAAGAGAGGAGAAAGTCTAGGATA
 CACAGAAGGGCCCTTGTGGCTCTGGCCTTCATCATATCCTCTGCTGCATTCTGCCATCTTGGTGGTT
 TTGGTCAGCTACAGACAGTTTAAAGTACGTCAAGCTGAGTGTACAAAGACTGCACGAATTCAGGCCGAT
 TACCCGCGGCTAAACCAGCAGTGCCGGCTCCTGCACCAGTGGCAGCGCCCCGCGCCGCGCCCTCC
 GCCAGGTGCGCATCTCTATGAAGAACTTGAGACAGCTCAATGCATAAGTATGAAATGCCTCAATATGGG
 AGTCGCGCTCGATTGTTACCACCAGCTGGACAGGAGGAATATGGTGGAGTGGTGGTGAAGCTGAGGAAG
 AATATGAGGAGGAAGAGTGGCAAGAAAAAGAATGATCAAGTTAGTTGTTGATCGAGAGTATGAAACCAG
 CTCAACTGGAGAAGACAGTGTCTCCTGAATGTCAGAGAAACCGTCTTACCATCCTAGTATCCACAGTAAT
 ATCAACGGCAATATATATTGCACAGAATGGTCTGTGGTGAGAACCCGCGTGCCTGCCTCACGGACA
 ACTTAAAAGTTGCTTCCCTGTTTGCAGTGGGAGGGCCCTTAAAGAACTAGACAAGTTGGCAGTGACACA
 TGAGGAGAATGTACCTCTGAACACATTCAAAGGGGCCATTTTCTACTGAAAAAATGAATGCAAGACCA
 ACTCTGGTTACATTTGCCCTTGGCCTGTGGGGACTGACAATACAGCGGTGAAGCCACTAAGGAACAGGC
 TGAAAAGCACAGTTGAACAGGAGTCCATGATTGACAGTAAGAACATCAAGGAGGCTTTGGAATTTATAG
 TGACCACACAGTCTGATGATGAAGAGCTTTGGATGGGCCCTGGAACAACCTCCATATACCAATGACA
 AACTG

ACGCGTACGCGGCCGCTCGAGCAGAACTCATCTCAGAAGAGGATCTGGCAGCAAATGATATCCTGGATT
ACAAGGATGACGACGATAAGGTTAA

Protein Sequence:

>RC227096 representing NM_001142771
Red=Cloning site Green=Tags(s)

MFRQFYLWTLASGIILGSLFEICLGQYDDDWQYEDCKLARGPPATIVAIDEESRNGTILVDNMLIKGT
AGGPDPTIELSLKDNVDYWLMDPVKQMLFLNSTGRVLRDPPMNIHSIVVQVCINKKVGTTIYHEVRI
VVRDRNDNSPTFKHESYATVNELTPVGTTFITGFGSDNGATDIDDGPNQIEYVIQYNPDDPTSNDTFE
IPLMLTGNIVLRKRLNYEDKTRYFVVIQANDRAQNLNERRTTTTLTVDVLGDGDLGPMFLPCVLPNTR
DCRPLTYQAAIPELRTPEELNPIIVTPPIQAIDQDRNIQPPSDRPGILYSILVGTPEYPRFFHMHPRTA
ELSLLEPVNRDFHQKFDLVIAEQDNGHPLPAFAGLHIEILDENNQSPYFTMPSYQGYILESAPVGATIS
DSLNLTSPLRIVALDKDIEDTKDPELHLFLNDYTSVFTVTQTGITRYLTLQPVDRREEQQTTFYSITAFD
GVQSEPVIVNIQVMDANDNTPTFPEISYDVVYVYTDMPRGSVIQLTAVDADEGSNGEITVEILVGAQGD
FIINKTTGLITIIAPGVEMIVGRYALTVAADNAPPAERRNSICTVYIEVLPPNNQSPRFPQLMYSLEI
SEAMRVGAVLLNLQATDREGDSITYAIEGDPQRVFNLSETTGILTLGKALDRESTDRYILIIITASDGRP
DGTSTATVNIIVTDVNDNAPVFDPYLPRNLSVVEEENAFVGVKATDPDAGINGQVHSLGNFNLFRI
TSNGSIYAVKLNREVRDYYELVVVATDGAVHPRHSTLTLAIKVLIDDNSPVFTNSTYTVLVEENLPAG
TTILQIEAKDVLGANVSYRIRSPVKKHFFALHPFTGELSLRSLDYEAFPDQEASITFLVEAFDIYGTM
PPGIATVTVIVKDMNDYPPVFSKRIYKGMVAPDAVKGTPITTVYAEDADPPGLPASRVRYRVDVQFPYP
ASIFEVEEDSGRVITRVNLNEEPTTIFKLVVAFDDGEPVMSSSATVKILVHPGEIPRFTQEEYRPPPV
SELATKGTVMGVISAAAINQSIYVSIYSGNEEDTFGINNITGVIYVNGPLDYETRTSYVLRVQADSLEVV
LANLRVPSKSNATKVIIEIQDENNHPPVFQKFKYIGGVSEDAFMFTSVLRVKATDKDTGNYVMAYRLII
PPIKEGKEGFVYETYTGLIKTAMLFHNMRRSYFKFQVIATDDYKGLSGKADVLVSVVNQLDMQVIVSNV
PPTLVEKKIEDLTEILDYVQEQIPGAKVVVESIGARRHGDAFSLDYTKCDLTVYAIDPQTNRAIDRNE
LFKFLDGKLLDINKDFQPYGEGGRILEIRTPEAVTSIKKRGESLGYTEGALLALAFIIILCCIPAILVV
LVSYRQFKVQRQAECTKTARIQAALPAKPAVPAPAPVAAPPPPPPPGHAHLYEELGDSSMHKYEYMPQYG
SRRRLPPAQEEYGEVVGAEAEYEEYEWARKRMIKLVVDREYETSSTGEDSAPECQRNRLHHSIHSN
INGNIYIAQNGSVVRTRRACLTDNLKVASPVRLGGPFKKLTKLAVTHEENVLNTLSKGFSTEKMNARP
TLVTFAPCPVGTNTAVKPLRNRLKSTVEQESMIDSKNIKEALEFHSHTQSDDEELWMPGNLHHPMT
KL

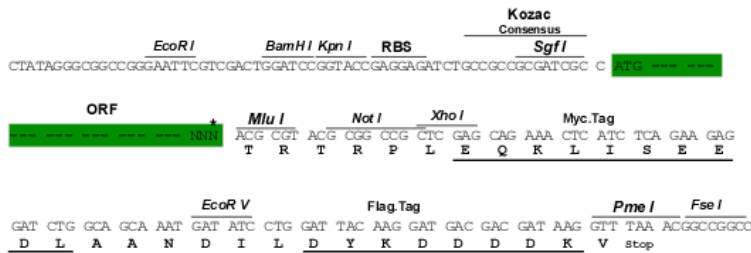
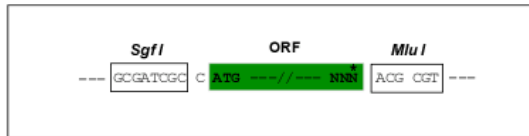
TRTRPLEQKLISEEDLAANDILDYKDDDDKV

Restriction Sites:

SgfI-MluI

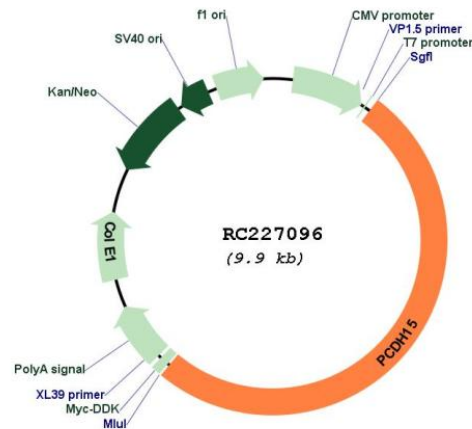
Cloning Scheme:

Cloning sites used for ORF Shuttling:



* The last codon before the Stop codon of the ORF

Plasmid Map:



ACCN: NM_001142771

ORF Size: 5046 bp

OTI Disclaimer: The molecular sequence of this clone aligns with the gene accession number as a point of reference only. However, individual transcript sequences of the same gene can differ through naturally occurring variations (e.g. polymorphisms), each with its own valid existence. This clone is substantially in agreement with the reference, but a complete review of all prevailing variants is recommended prior to use. [More info](#)

OTI Annotation: This clone was engineered to express the complete ORF with an expression tag. Expression varies depending on the nature of the gene.

Components:	The ORF clone is ion-exchange column purified and shipped in a 2D barcoded Matrix tube containing 10ug of transfection-ready, dried plasmid DNA (reconstitute with 100 ul of water).
Reconstitution Method:	<ol style="list-style-type: none">1. Centrifuge at 5,000xg for 5min.2. Carefully open the tube and add 100ul of sterile water to dissolve the DNA.3. Close the tube and incubate for 10 minutes at room temperature.4. Briefly vortex the tube and then do a quick spin (less than 5000xg) to concentrate the liquid at the bottom.5. Store the suspended plasmid at -20°C. The DNA is stable for at least one year from date of shipping when stored at -20°C.
RefSeq:	<u>NM_001142771.2</u>
RefSeq ORF:	5049 bp
Locus ID:	65217
Cytogenetics:	10q21.1
Protein Families:	Druggable Genome, Transmembrane
MW:	186.95 kDa
Gene Summary:	<p>This gene is a member of the cadherin superfamily. Family members encode integral membrane proteins that mediate calcium-dependent cell-cell adhesion. It plays an essential role in maintenance of normal retinal and cochlear function. Mutations in this gene result in hearing loss and Usher Syndrome Type 1F (USH1F). Extensive alternative splicing resulting in multiple isoforms has been observed in the mouse ortholog. Similar alternatively spliced transcripts are inferred to occur in human, and additional variants are likely to occur. [provided by RefSeq, Dec 2008]</p>