

Product datasheet for RC227068

SLC35B3 (NM_001142541) Human Tagged ORF Clone

Product data:

Product Type:	Expression Plasmids
Product Name:	SLC35B3 (NM_001142541) Human Tagged ORF Clone
Tag:	Myc-DDK
Symbol:	SLC35B3
Synonyms:	C6orf196; CGI-19; PAPST2
Mammalian Cell Selection:	Neomycin
Vector:	pCMV6-Entry (PS100001)
E. coli Selection:	Kanamycin (25 ug/mL)
ORF Nucleotide Sequence:	>RC227068 ORF sequence Red=Cloning site Blue=ORF Green=Tags(s)

TTTTGTAATACGACTCACTATAGGGCGCCGGGAATTCGTCGACTGGATCCGGTACCGAGGAGATCTGCC
GCC**CGATCGCC**

ATGGACTTGACACAGCAAGCAAAAGACATACAGAACATAACAGTCCAGGAAACCAAAAAAATACTCTG
AAAGCATTGAATGCAGCAAAATAACAATGGATCTCAAGTTCAACAATCCAGGAAATATATTTCTATCAC
TGTGCCATCCAAAACCAACAATGTCACCACACATCAAGTCAGTTGACGACGTTGTGGTACTTGGCATG
AATCTCAGCAAGTTAAACAACTTACTCAGTTTTTCATATGTGTTGCTGGAGTTTTGTATTTTACCTAA
TTTATGGGTATTTACAGGAATTAATATTTTCAGTGGAGGGTTTTAAGTCCTGTGGCTGGTACCTTACCTT
AGTGCAGTTTGCCTTTTACTCCATATTTGGCCTAATAGAACTTCAGCTTATTCAGGACAAAAGGAGGAGA
ATACCAGGAAAAACCTACATGATAATAGCTTTTCTAACTGTGGTACTATGGGGTTATCAAAACCTTCTT
TGGGCTACCTGAATTACCCTACCAAGTCATCTTCAAGTGTGCAAAATTGATTCTCTGTTATGCTAGGAGG
AGTTTTTATTCAAGGAAAGCGTTATAATGTTGCAGATGTGTCTGCTGCCATATGTATGAGCCTTGGCCTG
ATATGGTTTACCCTCGCTGACAGCACAACCTGCACCAATTTCAACCTGACGGGTGTGGTCTTATTTCC
TGGCACTATGTGCAGATGCCGTCATTGGAAATGTTCAAGAGAAAGCTATGAACTTCATAATGCTTCTAA
TTCTGAAATGGTATTGTATTTCGATTCAATTGGTTTTGTATACATTTTACTGGGATTGACATGCACTAGT
GGATTAGGCCCTGCAGTAACATTTTGTGCAAGAATCCAGTTCGGACCTATGGTTATGCGTTCCTTTTTT
CCCTCACTGGATATTTTGAATCTCCTTTGTCTGGCTTTGATTAATAATTTTGGTGCACCTATTGCTGT
AACAGTGACAACAGGAAGAAAAGCAATGACCATTGTAATTTCTGTTTATATTCTTTGCTAAACCATTACAG
TTTCAGTATGTATGGTCTGGTTTGTAGTTGCTCTTGGTATATTTCTCAATGTTTACAGCAAAAATATGG
ATAAAAATAAGACTACCATCACTGTATGATTTGATAAACAATCAGTGGAAGCAAGAAAGTCAAGGACGCT
GGCACAGACTGTA

ACGCGTACGCGGCCGCTCGAGCAGAAACTCATCTCAGAAGAGGATCTGGCAGCAATGATATCCTGGATT
ACAAGGATGACGACGATAAGGTTTAA



[View online >](#)

Protein Sequence: >RC227068 protein sequence
Red=Cloning site Green=Tags(s)

MDLTQQAKDIQNITVQETNKNNSEIECSKITMDLKFNNRKYISITVPSKTQTMSPHIKSVDDVVVLGM
 NLSKFNKLTQFFICVAGVFVYLIYGYLQELIFSVEGFKSCGWYLTLVQFAFYSIFGLIELQLIQDKRRR
 IPGKTYMIIAFLTVGTMGLSNTSLGYLNYPTQVIFKCKLIPVMLGGVF IQGKRYNVADVSAIICMSLGL
 IWFTLADSTTAPNFNL TGVVLLISLALCADAVIGNVQEKAMKLNASNSEMLVLSYSIGFVYILLGLTCTS
 GLGPAVTFCAKNPVRTYGYAFLFSLTGYFGISFVLALIKIFGALIAVTVTTRKAMTIVLSFIFFAKPFT
 FQYVWSGLLVVLGIFLNYSKNMDKIRLPSLYDLINKSVEARKSRTLAQTV

TRTRPLEQKLISEEDLAANDILDYKDDDDKV

Chromatograms: https://cdn.origene.com/chromatograms/mk6674_d06.zip

Restriction Sites: SgfI-MluI

Cloning Scheme:



ACCN: NM_001142541

ORF Size: 1203 bp

OTI Disclaimer: The molecular sequence of this clone aligns with the gene accession number as a point of reference only. However, individual transcript sequences of the same gene can differ through naturally occurring variations (e.g. polymorphisms), each with its own valid existence. This clone is substantially in agreement with the reference, but a complete review of all prevailing variants is recommended prior to use. [More info](#)

OTI Annotation: This clone was engineered to express the complete ORF with an expression tag. Expression varies depending on the nature of the gene.

Components: The ORF clone is ion-exchange column purified and shipped in a 2D barcoded Matrix tube containing 10ug of transfection-ready, dried plasmid DNA (reconstitute with 100 ul of water).

Reconstitution Method:

1. Centrifuge at 5,000xg for 5min.
2. Carefully open the tube and add 100ul of sterile water to dissolve the DNA.
3. Close the tube and incubate for 10 minutes at room temperature.
4. Briefly vortex the tube and then do a quick spin (less than 5000xg) to concentrate the liquid at the bottom.
5. Store the suspended plasmid at -20°C. The DNA is stable for at least one year from date of shipping when stored at -20°C.

RefSeq: [NM_001142541.2](#), [NP_001136013.1](#)

RefSeq Size: 1860 bp

RefSeq ORF: 1206 bp

Locus ID: 51000

UniProt ID: [Q9H1N7](#)

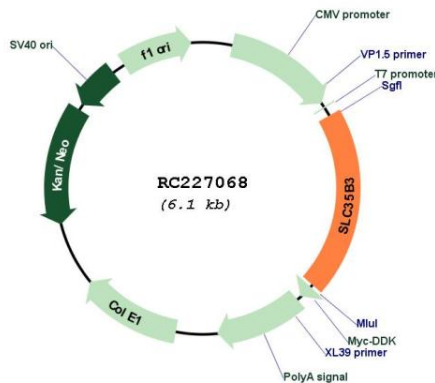
Cytogenetics: 6p24.3

Protein Families: Transmembrane

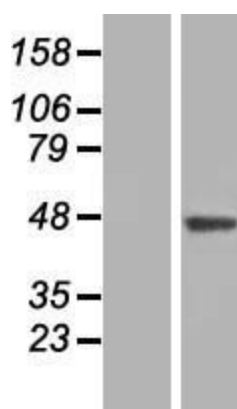
MW: 44.6 kDa

Gene Summary: This gene is a member of the solute carrier family. The encoded protein is involved in the transport of 3-prime phosphoadenosine 5-prime phosphosulfate (PAPS) from the nucleus or the cytosol to the Golgi lumen. This gene has been reported to be expressed preferentially in the human colon tissues. Alternative splicing results in multiple transcript variants. [provided by RefSeq, Dec 2013]

Product images:



Circular map for RC227068



Western blot validation of overexpression lysate (Cat# [LY428161]) using anti-DDK antibody (Cat# [TA50011-100]). Left: Cell lysates from untransfected HEK293T cells; Right: Cell lysates from HEK293T cells transfected with RC227068 using transfection reagent MegaTran 2.0 (Cat# [TT210002]).