

## Product datasheet for **RC227054**

### GLG1 (NM\_001145666) Human Tagged ORF Clone

#### Product data:

Product Type:	Expression Plasmids
Product Name:	GLG1 (NM_001145666) Human Tagged ORF Clone
Tag:	Myc-DDK
Symbol:	GLG1
Synonyms:	CFR-1; ESL-1; MG-160; MG160
Mammalian Cell Selection:	Neomycin
Vector:	pCMV6-Entry (PS100001)
E. coli Selection:	Kanamycin (25 ug/mL)
ORF Nucleotide Sequence:	>RC227054 representing NM_001145666 Red=Cloning site Blue=ORF Green=Tags(s)

CTATAGGGCGCCCGGAATTCGTCGACTGGATCCGGTACCGAGGAGATCTGCCGCCGCGATCGCCGGCGC  
GCC

ATGGCGCGTGTGGACGTGTACGGAGGATGTTCCGCTTGTGGCGCGCTGCATCTGCTGCTGCTATTTCG  
CGGCCGGGCGGAGAACTCCCCGCCAGGGCGTCCACAGCCAGGGCCAGGGTCCCAGGGGCAACTTTGT  
GTCCTTCGTAGGGCAGGCCGGAGCGCGGCCCGGGTCCAGCAGCTGCCCCAGCTGCCTCAGTCATCG  
CAGCTTCAGCAGCAACAGCAGCAGCAACAGCAACAGCAGCCTCAGCCGCCAGCCGCTTTCCCGG  
CGGGTGGCCTCCGGCCCGGGGAGGAGCGGGGCTGGTGGGGCTGGAAGCTGGCGGAGGAAGAGTC  
CTGAGGGAGGACGTGACCCGCGTGTGCCCTAAGCACACCTGGAGCAACAACCTGGCGGTGCTCGAGTGC  
CTGCAGGATGTGAGGGAGTTGTTGTGGAATTATAAGCTGAACCTAACTACAGATCCCAAATTTGAATCTG  
TGGCCAGAGAGTTTGAATCTACTATAACAGAGATTAAGAATGTGCTGATGAACCGGTTGAAAAGG  
TTACATGGTTTCTGCTTGGTGGATCACCGAGGCAACATCACTGAGTATCAGTGTACCAGTACATTACC  
AAGATGACGGCCATCATTTTTAGTGATTACCGTTAATCTGTGGCTTCATGGATGACTGCAAAAATGACA  
TCAACATTCTGAAATGTGGCAGTATTCGGCTTGGAGAAAAGGATGCACATTCACAAGGTGAGGTGGTATC  
ATGCTTGGAGAAAGCCCTGGTGAAGAAGCAGAAGAAAGAGAACCAAGATTCAAGTTTCTGAACCTG  
AAGAAAGCCATTCTCCGGTGGCTGAGCTGTCTCGGATGACTTCACTTAGCCGCATTATATTTTG  
CTTGCCGAGATGATCGGGAGCGTTTTTGTGAAAATACACAAGCTGGTGGGCGAGAGTATAAGTGCCT  
CTTAAACCATAAATTTGAAGAATCCATGAGTGAAGAAGTGTGAGAAGCACTTACAACCCGCAAAAAGCTG  
ATTGCCAGGATTATAAAGTCAGTTATTATTGGCCAAATCCTGTAAAAGTGAAGTGAAGAAATACCGGT  
GCAATGTGAAAACCTTCCGCGATCGCGTGAAGCCAGGCTCTCCTACTTGTAAATGTGCCTGGAGTCAGC  
TGTACACAGAGGGCGACAAGTCAGCAGTGTGAGTCCAGGGGAGATGCTGGATTACCGACGCATGTTGATG  
GAAGACTTTTCTGAGCCCTGAGATCATCTAAGCTGTGGGGGAGATTGAACACCATTGTTCCGGAT  
TACATCGAAAAGGGCGACCTACTGTCTGATGAAAGTAGTTCGAGGGGAGAAGGGAACTTGAAT  
GAACTGCCAGCAGCGCTTCAAACACTGATTCAGGAGACTGACCTGGTGCAGATTACCGCATTGATCGA



[View online »](#)

GCTTTGAATGAAGCTTGTGAATCTGTAATCCAGACAGCCTGCAAACATATAAGATCTGGAGACCCAATGA  
TCTTGTGCTGCCTGATGGAAACATTTATACACAGAGAAGATGGTAGAAGACTGTGAACACCGTCTCTTAGA  
GCTGCAGTATTTTCATCTCCCGGATTGGAAGCTGGACCCTGTCCTGTACCGCAAGTGCCAGGGAGACGCT  
TCTCGTCTTTGCCACACCCACGGTTGGAATGAGACCAGTGAATTTATGCCTCAGGGAGCTGTGTTCTCTT  
GTTTATACAGACACGCCCTACCGCACTGAGGAACAGGGAAGGAGGCTCTCACGGGAGTGCCGAGCTGAAGT  
CCAAAGGATCCTACACCAGCGTGCCATGGATGTCAAGCTGGATCCTGCCCTCAGGATAAGTGCCTGATT  
GATCTGGGAAAAATGGTGCAGTGAGAAAAACAGAGACTGGACAGGAGCTGGAGTGCCTCAGGACCATCTGG  
ATGACTTGGTGGTGGAGTGTAGAGATATAGTTGGCAACCTCACTGAGTTAGAATCAGAGGATATTCAAAT  
AGAAGCCTTGCTGATGAGAGCCTGTGAGCCATAATTCAAGACTTCTGCCACGATGTGGCAGATAACCAG  
ATAGACTCTGGGGACCTGATGGAGTGTCTGATACAGAACAAACACCAGAAGGACATGAACGAGAAGTGTG  
CCATCGGAGTTACCCACTTCCAGCTGGTGCAGATGAAGGATTTTCGGTTTTCTTACAAGTTTAAAAATGGC  
CTGCAAGGAGGACGTGTTGAAGCTTTGCCCAAACATAAAAAAGAAGGTGGACGTGGTGTCTGCCTGAGC  
ACGACCGTGCGAATGACTCTGCAGGAAGCCAAGGAGCACAGGGTGTCCCTGAAGTCCCGCAGGCAGC  
TCCGTGTGGAGGAGCTGGAGATGACGGAGGACATCCGCTTGGAGCCAGATCTATACGAAGCTGCAAGAG  
TGACATCAAAAATTCTGTTCCGCTGTGCAATATGGCAACGCTCAGATTATCGAATGTCTGAAAGAAAAC  
AAGAAGCAGTAAAGCACCGCTGCCACCAAAAAGTATTTAAGCTCAGAGGACAGAGATGATGGACCCAG  
AGCTAGACTACACCCCTCATGAGGGTCTGCAAGCAGATGATAAAGAGGTTCTGTCCGGAAGCAGATTCTAA  
AACCATGTTGCAGTGTGTTGAAGCAAAATAAAAACAGTGAATTGATGGATCCCAATGCAAACAGATGATA  
ACCAAGCGCCAGATCACCCAGAACACAGATTACCGCTTAAACCCCATGTTAAGAAAAGCCTGTAAAGCTG  
ACATTCCTAAATTCTGTCACGGTATCCTGACTAAGGCCAAGGATGATTCAGAATTAAGAAGGACAAGTCAT  
CTCTTGCTGAAGCTGAGATATGCTGACCAGCGCCTGTCTCAGACTGTGAAGACCAGATCCGAATCATT  
ATCCAGGAGTCCGCCCTGGACTACCGCCTGGATCCTCAGCTCCAGCTGCACTGCTCAGACGAGATCTCCA  
GTCTATGTGCTGAAGAAGCAGCAGCCCAAGAGCAGAGGTCAGGTGGAGGAGTGCCTCAAGGTCAACCT  
GCTCAAGATCAAAACAGAATTGTGTA AAAAGGAAGTGCTAAACATGCTGAAGGAAAGCAAAGCAGACATC  
TTTGTTGACCCGGTACTTCATACTGCTTGTGCCCTGGACATTA AACACCACTGCGCAGCCATCACCCCTG  
GCCGCGGGCGTCAAATGTCTGTCTCATGGAAGCACTGGAGGATAAGCGGGTGGAGTTACAGCCCGAGTG  
CAAAAAGCGCCTCAATGACCGGATTGAGATGTGGAGTTACGCAGCAAAGGTGGCCCCAGCAGATGGCTTC  
TCTGATCTTGCCATGCAAGTAATGACGTCTCCATCTAAGAACTACATTCTCTGTGATCAGTGGGAGCA  
TCTGTATATTGTTCTGATTGGCCTGATGTGTGGACGGATACCAAGCGAGTGACACGAGAGCTCAAGGA  
CAGGCTACAATACAGGTCAGAGACAATGGCTTATAAAGGTTTAGTGTGGTCTCAGGATGTGACAGGCAGT  
CCAGCC

ACGCGTACGCGGCGCTCGAGCAGAACTCATCTCAGAAGAGGATCTGGCAGCAAATGATATCCTGGATT  
ACAAGGATGACGACGATAAGGTTTAA

**Protein Sequence:** >RC227054 representing NM\_001145666  
 Red=Cloning site Green=Tags(s)

```

MAACGRVRRMFRLSAALHLLLLFAAGAEKLPQGQVHSQGGPGANFVSFVQAGGGGPAGQQLPQLPQSS
QLQQQQQQQQQQPQPQPPFPAGGPPARRGGAGGGWKLAEESCREVDVTRVCPKHTWSNNLAVLEC
LQDVRELLWNYKLNLTDPKFESVAREVCKSTITEIKECADEPVGKGYMVSCLVDHRGNITEYQCHQYIT
KMTAIIIFSDYRLICGFMDDCKNDINILKCGSIRLGEKDAHSQGEVVSCLEKGLVKEAEEREPKIQVSEL
KKAILRVAELSSDDFHLDRLHYFACRDDRERFCENTQAGEGRVYKCLFNHKFEESMSEKCREALTTROKL
IAQDYKVSYSLAKSCKSDLKKYRCNVENLPRSREARLSYLLMCLESVHRGRQVSSECQGEMLDYRRMLM
EDFSLSPEIILSCRGEIEHHCSGLHRKGRTLHCLMKVVRGEKGNLGMNCQALQTLIQETDPGADYRIDR
ALNEACESVIQTACKHIRSGDPMILSCLMEHLYTEKMVEDCEHRLLELQYFISRDKLDPVLYRKCQGDA
SRLCHTHGWNETSEFMPQGA VFSCLYRHAYRTEEQGRRLSRECRAEVQRILHQRAMDVKLDPALQDKCLI
DLGKWCSEKTETGQELECLQDHLDDLVECRDIVGNLTELESEDIQIEALLMRACEPIIQNFCHDVADNQ
IDSGDLMECLIQNKHQKDMNEKCAIGVTHFQLVQMKDFRF SYKFKMACKEDVLKLCPNIKKKVDDVVICLS
TTVRNDTLQEAKEHRVSLKCRRLRVEELEMEDIRLEPDLYEACKSDIKNFCSAVQYGNAQIIECLKEN
KKQLSTRCHQKVFQLQETEMMDPELDYTLMRVCKQMIKRFCEADSKTMLQCLKQNKNSSELMDPKCKQMI
TKRQITQNTDYRLNPMLRKACKADIPKFCHGILTKAKDDSELEGQVISCLKLRADQRLSSDCEDQIRII
IQESALDYRLDPQLQLHCSDEISSLCAEAAAQEQTGQVEECLKVNLLKIKTELCKKEVLNMLKESKADI
FVDPVLHTACALDIKHHCAAITPGRGRQMSCLMEALEDKRVRLQPECKRLNDRIEMWSYAAKVAPADGF
SDLAMQVMTSPSKNYILSVISGSICILFLIGLMCGRITKRVTRRELKDRLQYRSETMAYKGLVWSQDVTGS
PA
  
```

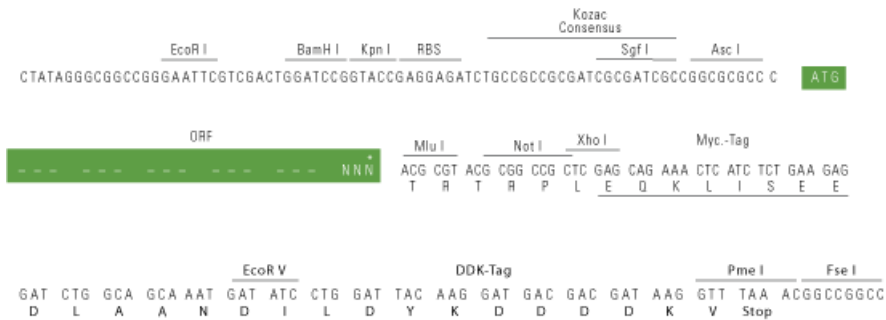
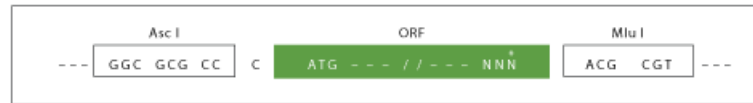
TRTRPLEQKLISEEDLAANDILDYKDDDDKIV

**Restriction Sites:**

AscI-MluI

**Cloning Scheme:**

Cloning sites used for ORF Shuttling:



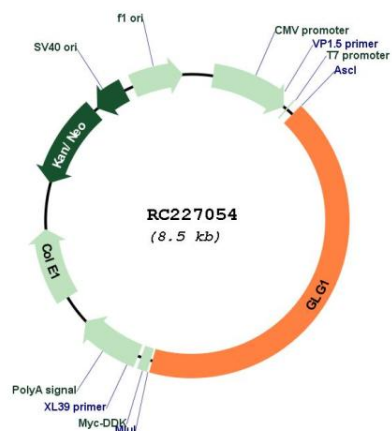
\* The last codon before the Stop codon of the ORF

**ACCN:** NM\_001145666

**ORF Size:** 3576 bp

<b>OTI Disclaimer:</b>	The molecular sequence of this clone aligns with the gene accession number as a point of reference only. However, individual transcript sequences of the same gene can differ through naturally occurring variations (e.g. polymorphisms), each with its own valid existence. This clone is substantially in agreement with the reference, but a complete review of all prevailing variants is recommended prior to use. <a href="#">More info</a>
<b>OTI Annotation:</b>	This clone was engineered to express the complete ORF with an expression tag. Expression varies depending on the nature of the gene.
<b>Components:</b>	The ORF clone is ion-exchange column purified and shipped in a 2D barcoded Matrix tube containing 10ug of transfection-ready, dried plasmid DNA (reconstitute with 100 ul of water).
<b>Reconstitution Method:</b>	<ol style="list-style-type: none"><li>1. Centrifuge at 5,000xg for 5min.</li><li>2. Carefully open the tube and add 100ul of sterile water to dissolve the DNA.</li><li>3. Close the tube and incubate for 10 minutes at room temperature.</li><li>4. Briefly vortex the tube and then do a quick spin (less than 5000xg) to concentrate the liquid at the bottom.</li><li>5. Store the suspended plasmid at -20°C. The DNA is stable for at least one year from date of shipping when stored at -20°C.</li></ol>
<b>RefSeq:</b>	<a href="#">NM_001145666.2</a>
<b>RefSeq ORF:</b>	3579 bp
<b>Locus ID:</b>	2734
<b>UniProt ID:</b>	<a href="#">Q92896</a>
<b>Cytogenetics:</b>	16q23.1
<b>Protein Families:</b>	Druggable Genome, Transmembrane
<b>Protein Pathways:</b>	Cell adhesion molecules (CAMs)
<b>MW:</b>	135.8 kDa
<b>Gene Summary:</b>	Binds fibroblast growth factor and E-selectin (cell-adhesion lectin on endothelial cells mediating the binding of neutrophils).[UniProtKB/Swiss-Prot Function]

Product images:



Circular map for RC227054