

Product datasheet for **RC227050**

SCRN1 (NM_001145514) Human Tagged ORF Clone

Product data:

Product Type:	Expression Plasmids
Product Name:	SCRN1 (NM_001145514) Human Tagged ORF Clone
Tag:	Myc-DDK
Symbol:	SCRN1
Synonyms:	SES1
Mammalian Cell Selection:	Neomycin
Vector:	pCMV6-Entry (PS100001)
E. coli Selection:	Kanamycin (25 ug/mL)



[View online »](#)

ORF Nucleotide
Sequence:

>RC227050 representing NM_001145514
Red=Cloning site Blue=ORF Green=Tags(s)

TTTTGTAATACGACTCACTATAGGGCGGCCGGAATTCGTCGACTGGATCCGGTACCGAGGAGATCTGCC
GCC**CGGATCGCC**

ATGGTACAGGACGGCACTTTTAAAACCAGGGACTCGACTTGGACGTGCGAGTCAACAAGGATGGCTGCAG
CTCCTCCAAGTTACTGTTTTGTTGCCTTCCCTCCAGTGCCTAAGGATGGTCTGGTGGTATTTGGGAAAAA
TTCAGCCCGGCCAGAGATGAAGTGCAAGAGGTTGTGATTTCTCGGCTGCTGATCACGAACCGGAGAGC
AAGGTTGAGTGCACCTTACATTTCAATCGACCAAGTTCCAAGGACCTATGCCATAATGATAAGCAGACCCG
CCTGGCTCTGGGAGCAGAAATGGGAGCCAATGAACATGGAGTGTGCATAGCCAATGAAGCCATCAACAC
CAGAGAGCCAGCTGCCGAGATAGAAGCCTTGTGGGGATGGATCTGGTCAGGCTTGGTTAGAAAGAGGG
GAAACAGCTAAAGAAGCCTTAGATGTCATTGTCTCCTTGTGGAAGAATGGACAAGGTGGGAATTACT
TTGAAGATGCAAACCTGCCACAGCTTCAAAGTGCATATCTGATTGTGGATCGTGATGAAGCCTGGGT
GCTCGAGACCATAGGGAAGTACTGGGCTGCCGAGAAAGTACAGAGGGAGTGGGTGCATTTGCAGTCAG
CTTTCGCTCAACCTAAGATGGATGCAGAGCATCCGGAACCTCAGGAGTACGCTCAGAGCCAAGGTTGGT
GGACGGGAGAGGGCGAGTTCAATTTTTCCGAAGTCTTTCTCCAGTTGAGGATCATCTAGACTGCGGTGC
TGGCAAAGACAGCTTAGAAAAACAAGAAGAAAGCATCACAGTGCAGACTATGATGAACACCTTACGGGAC
AAAGCCAGCGGAGTGTGCATAGACTCTGAGTTTTCTCACCACAGCCAGTGGAGTGTCTGTCTGCCGC
AGAATAGAAGCTCTCCGTGCATTCACTACTTCACTGGAACCCCTGATCCTTCCAGGTCCATATCAAGCC
TTTCATCTTTGTGATGACGTAACCTTGTCCCAAAACACAGTCTCCCTGTTTTGGGGATGACGACCCT
GCCAAAAGGAGCCTCGTTCCAGGAGAAACAGACCCCGGCATGAGCTGTACAAGCCACGAGTGGG
CAGTGCCATCATCGAAAGTGACCAGGAGCAAGTCCGAAGCTGAGGAGCACCATGCTGGAGCTGGAGAA
GCAAGGCTGGAAGCCTGGAAGAAATCCTGACCAGCTCCGAGCCACTGGACCCTGCGGAAGTGGGGGAC
CTTTTCTATGACTGTGTTGACACGGAGATTAAGTCTTTAAG

ACGCGTACGCGGCCGCTCGAGCAGAAACTCATCTCAGAAGAGGATCTGGCAGCAAATGATATCCTGGATT
ACAAGGATGACGACGATAAGGTTTAA

Protein Sequence:

>RC227050 representing NM_001145514
Red=Cloning site Green=Tags(s)

MVQDGFKTRDSTWTCESTRMAAAPPSCYFVAFPPRAKDGLVVF GKNSARPRDEVQEVVYFSAADHEPES
KVECTYISIDQVPRTYAIMISRPALWGAEMGANEHGVCIANEAINTREPAAEIEALLGMDLVRLGLERG
ETAKEALDVIVSLLLEEHGQGGNYFEDANSCHSFQSAYLIVDRDEAWVLETIGKYWAAEKVTEGVRCICSQ
LSLTTKMDAHEPELRSYAQSQGWWTGEGEFNFSEVFSPEVDHLDGAGKDSLEKQEESITVQTMMLTRD
KASGVCIDSEFFLTTASGVSVLPQNRSSPCIHYFTGTPDPSRSIFKPFIFVDDVKLVPKTQSPCFGDDDP
AKKEPRFQEKPDRRHELKHAHEWARAIIIESDQEQRKLRSTMLELEKQGLEAMEEILTSSEPLDPAEVGD
LFYDCVDTEIKFFK

TRTRPLEQKLISEEDLAANDILDYKDDDDKV

Chromatograms:

https://cdn.origene.com/chromatograms/mk8059_f09.zip

Restriction Sites:

SgfI-MluI

Cloning Scheme:


ACCN: NM_001145514

ORF Size: 1302 bp

OTI Disclaimer: The molecular sequence of this clone aligns with the gene accession number as a point of reference only. However, individual transcript sequences of the same gene can differ through naturally occurring variations (e.g. polymorphisms), each with its own valid existence. This clone is substantially in agreement with the reference, but a complete review of all prevailing variants is recommended prior to use. [More info](#)

OTI Annotation: This clone was engineered to express the complete ORF with an expression tag. Expression varies depending on the nature of the gene.

Components: The ORF clone is ion-exchange column purified and shipped in a 2D barcoded Matrix tube containing 10ug of transfection-ready, dried plasmid DNA (reconstitute with 100 ul of water).

Reconstitution Method:

1. Centrifuge at 5,000xg for 5min.
2. Carefully open the tube and add 100ul of sterile water to dissolve the DNA.
3. Close the tube and incubate for 10 minutes at room temperature.
4. Briefly vortex the tube and then do a quick spin (less than 5000xg) to concentrate the liquid at the bottom.
5. Store the suspended plasmid at -20°C. The DNA is stable for at least one year from date of shipping when stored at -20°C.

RefSeq: [NM_001145514.1](#), [NP_001138986.1](#)

RefSeq ORF: 1305 bp

Locus ID: 9805

UniProt ID: [Q12765](#)

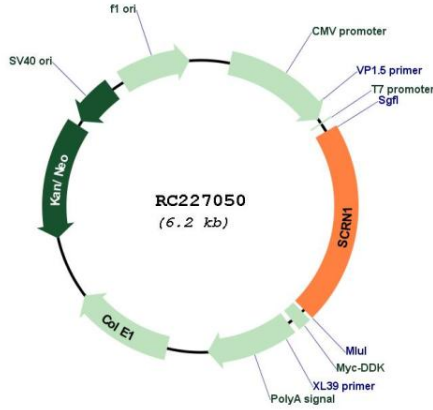
Cytogenetics: 7p14.3

MW: 48.5 kDa

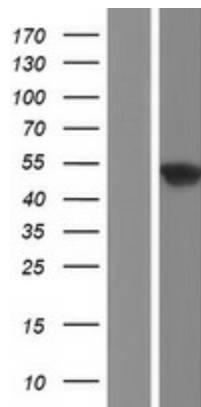
Gene Summary:

This gene likely encodes a member of the secernin family of proteins. A similar protein in rat functions in regulation of exocytosis in mast cells. Alternatively spliced transcript variants have been described. [provided by RefSeq, Mar 2009]

Product images:



Circular map for RC227050



Western blot validation of overexpression lysate (Cat# [LY428919]) using anti-DDK antibody (Cat# [TA50011-100]). Left: Cell lysates from untransfected HEK293T cells; Right: Cell lysates from HEK293T cells transfected with RC227050 using transfection reagent MegaTran 2.0 (Cat# [TT210002]).