

## Product datasheet for **RC227045**

### FSD1L (NM\_001145313) Human Tagged ORF Clone

#### Product data:

Product Type:	Expression Plasmids
Product Name:	FSD1L (NM_001145313) Human Tagged ORF Clone
Tag:	Myc-DDK
Symbol:	FSD1L
Synonyms:	CCDC10; CSDUFD1; FSD1CL; FSD1NL; MIR1
Mammalian Cell Selection:	Neomycin
Vector:	pCMV6-Entry (PS100001)
E. coli Selection:	Kanamycin (25 ug/mL)



[View online »](#)

**ORF Nucleotide Sequence:**

>RC227045 representing NM\_001145313  
 Red=Cloning site Blue=ORF Green=Tags(s)

TTTTGTAATACGACTCACTATAGGGCGGCCGGAATTCGTCGACTGGATCCGGTACCGAGGAGATCTGCC  
 GCC**CGCATCGCC**

ATGGACTCCCAGAAATACTGCTTTAAGGAGAATGAAAACGTTACAGTTGATAAAGCCTGTTTCTGATCT  
 CTAACATCACTATTGGACCAGAGTCTATTAACCTGCAGCAGGAAGCTCTACAGAGGATCATTCAACTCT  
 GGCAAATAAAAAATGATGAAATTCAGAACTTTATTGATACACTACATCATACTAAAAAGGAGTTCAGGAA  
 AATTCGTCCAACATACTCTCAGAGTTAGATGAAGAATTTGATAGTTTATACTCTATACTGGATGAAGTAA  
 AAGAAAGTATGATTAACGTATCAAGCAGGAACAAGCTCGTAAATCCCAAGAGTTACAGAGTCAGATTAG  
 TCAATGTAATAATGCCCTGGAGAAGCTCTGAAGAAGCTATTAGAATTTGCAACAAGGTCATTAGATATAAG  
 GAACCTGAAGAATTTCAAAGGCTGCCAGACAGATCAAGGATAGAGTCACAATGGCTTCAGCCTTCGCC  
 TTTCTTTGAAACCAAGGTCAGTGACAACATGACTCATTTAATGGTGGATTTCTCACAGGAAAGACAGAT  
 GCTGCAAACTTTGAAGTTTTTCCAGTCCCAAGCTCCAGAGATAGATCCAGTAGAGTGTGGTGGCA  
 GATAACTCTGTAACAGTGGCTTGGAAGATGCCAGAAGAAGATAATAAGATTGACCATTTTATACTGGAAC  
 ATAGGAAGACTAATTTTATGATGGACTTCCACGTGTAAGGATGAGCGATGCTGGGAGATAATTGATATAT  
 TAAGGGTACTGAATATACACTATCAGGCTTAAATTTGATTCAAAGTATATGAATTTTCAAGTGGAGCT  
 TGTAACAAGGCTGTGGCTGGAGAGTATTCTGATCCAGTACTCTAGAGACCAAGCACTTAACTTCAATT  
 TGGATAACTCCTCATCCCATTGAACTGAAAGTTGAAGATACATGTGTAGAGTGGGATCCTACTGGAGG  
 AAAAGGTCAAGAAAGTAAATTAAGGAAAAGAGAACAAGGCCAGAAGTGGTACACCATCCCCAAAACGA  
 ACATCTGTAGGCTCCAGGCCACCAGCAGTAAGAGGCAGTAGAGATCGTTTTACTGGAGAATCATAACAG  
 TGCTGGGAGACACTGCTATTGAAAGTGGACAACATTATTGGGAGTCAAGGCCAGAAGGATTGTAATC  
 CTACAGTGTGGGAGTAGCATACAAAACGTTGGGAAATTTGACCAATTGGGAAAGACAAACTAGTTGG  
 TGTATCCATGTCAACAACCTGGCTACAAAACACATTTGCAGCAAAGCATAATAATAAAGTCAAAGCTTTGG  
 ATGTTACTGTTCTGAAAAAATAGGTGATTTTGTGATTTTGTGGGGTCAACTTTCATTCTATGATGC  
 AAATTCTAAACAGTTGCTATATTCCTTTAAGACAAAATTTACTCAGCCAGTACTACCTGGTTTCATGGTA  
 TGGTGTGGTGGACTTTCTTTGAGTACTGGGATGCAGGTTCCAAGTGTGTGAGAACAACCTCAGAAAAGTG  
 AAAATGGAATGACTGGTTCAGCTAGCAGCCTGAACAATGTTGTTACTCAA

**ACGCGT**ACGCGGCCGCTCGAGCAGAACTCATCTCAGAAGAGGATCTGGCAGCAAATGATATCCTGGATT  
 ACAAGGATGACGACGATAAGGTTTAA

**Protein Sequence:**

>RC227045 representing NM\_001145313  
 Red=Cloning site Green=Tags(s)

MDSQKYCFKENENVTVDKACFLISNITIGPESINLQQEALQRIISTLANKNDEIQNFIDTLHHTLKGVQE  
 NSSNILSELDEEFDLSYLDEVKESMINCIKQEQARKSQELQSQISQCNNALENSEELLEFATRSLDIK  
 EPEEFKAARQIKDRVTMASAFRLSLKPKVSDNMTHLMVDFSQERQMLQTLKFLPVPKAPEIDPVECLVA  
 DNSVTVAWRMPEEDNKIDHFILEHRKTNFDGLPRVKDERCWEIIDNIKGTEYTLGSLKFDKSKYMNFRVRA  
 CNKAVAGEYSDPVTLETKALNFNLDNSSSHLNLKVEDTCVEWDPTGGKGQESKIKKENKGRSGTSPKR  
 TSVGSRPPAVRGSRRDFTGESYTVLGDTAIESGQHYWEVKAQKDKCSYVGVAYKTLGKFDQLGKTNTSW  
 CIHVNNWLQNTFAAKHNNKVKALDVTVPEKIGVFCDFDGGQLSFYDANSKQLLYSFKTKFTQPVLPGFMV  
 WCGGLSLSTGMQVPSAVRTLQKSENGMTGSASSLNNVVTQ

**TRTRPLEQKLI**SEEDLAANDILDYKDDDDKV

**Chromatograms:**

[https://cdn.origene.com/chromatograms/mk8033\\_a09.zip](https://cdn.origene.com/chromatograms/mk8033_a09.zip)

**Restriction Sites:**

SgfI-MluI

**Cloning Scheme:**


**ACCN:** NM\_001145313

**ORF Size:** 1590 bp

**OTI Disclaimer:** The molecular sequence of this clone aligns with the gene accession number as a point of reference only. However, individual transcript sequences of the same gene can differ through naturally occurring variations (e.g. polymorphisms), each with its own valid existence. This clone is substantially in agreement with the reference, but a complete review of all prevailing variants is recommended prior to use. [More info](#)

**OTI Annotation:** This clone was engineered to express the complete ORF with an expression tag. Expression varies depending on the nature of the gene.

**Components:** The ORF clone is ion-exchange column purified and shipped in a 2D barcoded Matrix tube containing 10ug of transfection-ready, dried plasmid DNA (reconstitute with 100 ul of water).

- Reconstitution Method:**
1. Centrifuge at 5,000xg for 5min.
  2. Carefully open the tube and add 100ul of sterile water to dissolve the DNA.
  3. Close the tube and incubate for 10 minutes at room temperature.
  4. Briefly vortex the tube and then do a quick spin (less than 5000xg) to concentrate the liquid at the bottom.
  5. Store the suspended plasmid at -20°C. The DNA is stable for at least one year from date of shipping when stored at -20°C.

**RefSeq:** [NM\\_001145313.3](#)

**RefSeq ORF:** 1593 bp

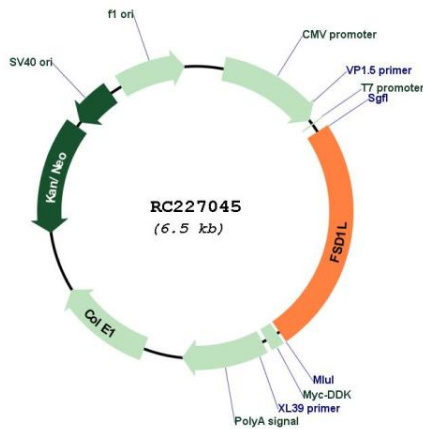
**Locus ID:** 83856

**UniProt ID:** [Q9BXM9](#)

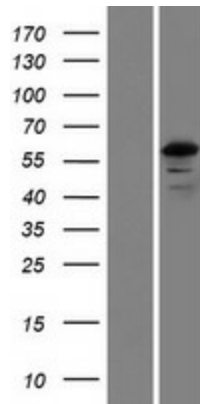
**Cytogenetics:** 9q31.2

**MW:** 59.4 kDa

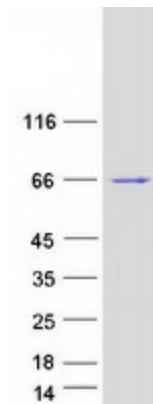
Product images:



Circular map for RC227045



Western blot validation of overexpression lysate (Cat# [LY428816]) using anti-DDK antibody (Cat# [TA50011-100]). Left: Cell lysates from untransfected HEK293T cells; Right: Cell lysates from HEK293T cells transfected with RC227045 using transfection reagent MegaTran 2.0 (Cat# [TT210002]).



Coomassie blue staining of purified FSD1L protein (Cat# [TP327045]). The protein was produced from HEK293T cells transfected with FSD1L cDNA clone (Cat# RC227045) using MegaTran 2.0 (Cat# [TT210002]).