

Product datasheet for RC227022

PCDH15 (NM_001142770) Human Tagged ORF Clone

Product data:

Product Type:	Expression Plasmids
Product Name:	PCDH15 (NM_001142770) Human Tagged ORF Clone
Tag:	Myc-DDK
Symbol:	PCDH15
Synonyms:	CDHR15; DFNB23; USH1F
Vector:	pCMV6-Entry (PS100001)
E. coli Selection:	Kanamycin (25 ug/mL)
Cell Selection:	Neomycin
ORF Nucleotide Sequence:	>RC227022 representing NM_001142770 Red=Cloning site Blue=ORF Green=Tags(s)

TTTTGTAATACGACTCACTATAGGGCGGCCGGAATTCGTCGACTGGATCCGGTACCGAGGAGATCTGCC
GCC**CGATCGCC**

ATGTTTCGACAGTTTTATCTCTGGACATGTTTAGCTTCAGGGATCATCCTGGGCTCTCTCTTTGAAATCT
GCTTGGGCCAGTATGATGATGATTGCAAAGTAGCTAGGGGAGGACCACCAGCTACCATAGTTGCTATTGA
TGAAGAAAGTCGGAATGGTACAATTCTGGTGGACAACATGCTGATCAAAGGGACTGCTGGAGGACCAGAC
CCCACCATAGAAGTTCTTTAAAGGATAATGTGGATTACTGGGTGTTGATGGATCCTGTTAAGCAAATGC
TTTTCTGAACAGCACCGGAAGAGTTCTGGATAGAGATCCACCGATGAACATACACTCCATTGTGGTGCA
GGTCCAGTGATCAACAAAAAGTGGGCACTATTATCTACCATGAAGTGCGAATAGTGGTGAGAGACAGG
AATGACAACCTACCCACTTTCAAGCATGAAAGCTACTATGCCACAGTGAATGAGCTCACTCCAGTTGGTA
CCACAATATTCACAGGATTTTCAGGAGACAATGGAGCTACAGATATAGATGATGGACCAATGGACAGAT
AGAGTATGTTATTCAGTATAATCCAGATGATCCGACATCCAATGACACCTTTGAAATCCCTAATGTTG
ACTGAAAATAGTGTTAAGGAAGAGGCTCAACTATGAAGATAAGACTCGCTACTTTGTCATAATCCAAG
CTAATGACCGTGCCAAAATCTGAATGAGAGGCGAACCACCACCACCTCTCACAGTGGATGTTCTGGA
TGGAGATGACTTGGGTCCAATGTTTCTTCTTGTGTCCTTGTGCCAAACACTCGTGATTGCCGTCCACTC
ACTTATCAAGCTGCCATACCTGAGTTGAGAAGTCCGGAAGAAGTGAACCCATTATTGTTACGCCACCAA
TCCAAGCCATTGATCAGGACCGGAATTTCAACCGCCATCAGATAGGCCAGGAATCCTCTATTCCATCCT
TGTTGGGACTCCTGAGGATTACCACGATTTTCCATATGCATCCTAGGACAGCAGAAGTCTGCTCCTG
GAGCCAGTAAACAGAGACTTTCACCAGAAATTTGATTTGGTTATTAAGGCTGAACAAGACAATGGTCATC
CTCTTCTGCCTTTCGCCGTCTACACATGAAACTGGATGAAAACAATCAAAGTCCATATTTTACAAT
GCCAGTTATCAAGGCTATATCCTGGAATCTGCCAGTGGGAGCAACCATTTCCGACAGTCTCAATTTG
ACTTCACCTTTAAGAATAGTAGCTCTGGACAAGGACATAGAAGATACAAAAGACCAGAGCTTCACCTTT
TTCTGAATGACTACACCTCAGTCTTACCGTACACAGACTGGTATTACTCGCTACCTCCTTACTTCA
ACCAGTGGACAGGGAAGAACAGCAAACCTTACACCTTTTCGATAACAGCATTGATGGTGTACAAGAAAGT
GAGCCAGTCATCGTCAATATTCAAGTATGGATGCAAAATGATAACACGCCAACCTTCCCTGAAATATCCT



ATGATGTGTATGTTTATACAGACATGAGACCTGGGGACAGTGTGCATACAGCTCACTGCAGTCGACGCAGA
CGAAGGGTCAAATGGGGAGATCACATATGAAATCCTTGTGGGGCTCAGGGAGACTTCATCATCAATAAA
ACAACAGGGCTTATACCCATCGCTCCAGGGGTGAAATGATAGTCGGGCGGACTTACGCACTCACGGTCC
AAGCAGCGGATAATGCTCCTCCTGCAGAGCGAAGGAACCCATCTGCAGTGTGTATATTGAAGTCTTCC
ACCAAATAATCAAAGCCCTCCTCGCTCCACAGCTGATGTATAGCCTTGAAATAGTGAAGCCATGAGG
GTTGGTGTCTTTTTATTAATCTACAGGCAACTGATCGAGAGGGAGACTCAATAACATATGCCATTGAGA
ATGGAGATCCTCAGAGAGTTTTTAACTTTTCAGAAACCACGGGGATTCTAACCTTAGGGAAGCACTGGA
CAGGGAAAGCACTGATCGCTACATTCTGATCATCACAGCTTCAGATGGCAGGCCAGATGGGACCTCAACT
GCCACAGTAAACATAGTGGTGACAGATGTCAATGACAATGCTCCAGTGTGGATCCTTATCTGCCAAGAA
ATTTATCTGTGGTGAAGAAGAAGCCAATGCCTTTGTGGGTCAAGTAAAAGCAACAGACCCTGATGCTGG
AATAAATGGTCAAGTGCCTACAGTTTGGGTAACCTTAAATAATCTTTTTCGTATCACATCCAATGGGAGC
ATTTACACAGCAGTGAAGCTTACAGAGAAGTCAGGGACTACTATGAACTTGTGTTGTGGCAACAGATG
GAGCAGTACACCCTCGTATTCAACTCTAACCTTGGCCATCAAGGTTTTGGACATTGATGATAACAGTCC
TGTGTTACCAATTCAACATACACTGCCTTGTGAAGAGAATTTGCCAGCTGGGACTACCATCCTTCAA
ATAGAGGCCAAAGATGTCGACCTTGGAGCAAATGTGTCTTACCGGATAAGAAGCCAGAAGTGAAGCACT
TTTTTGCACTACATCCATTTACAGGAGAACTATCGCTTTTAAGGAGTTTAGATTATGAGGCAATTTCCAGA
CCAAGAAGCAAGTATCACTTTTCTGGTAGAGGCCCTTTGATATTTATGGAACAATGCCACCTGGTATTGCT
ACTGTCACAGTGAATGTAAGGATATGAATGATTATCCTCCTGTCTTTAGTAAACGAATATACAAAGGGA
TGGTGGCTCCGGATGCAGTCAAGGGTACACCTATCACACAGTTTATGCTGAAGATGCAGACCCTCCTGG
ATTACCTGCAAGTCGTGTGAGGTATAGAGTAGATGTACAGTTTCTTACCCTGCCAGTATTTTTGAA
GTGGAAGAAGATTCTGGAAGAGTAATAACACGAGTCAATCTTAAATGAAGAACCACAACAATTTTTAAGT
TGGTGGTGGTGTCTTTGATGATGGGGAGCCTGTGATGTCAGCAGTGCACAGTGAAGATTCTTGTCTT
ACATCCTGGTGAATCCCACGCTTACACAGGAGGAATATAGACCTCCTCCAGTAACTGAACTTCCACC
AAAGGGACCATGGTTGGTGAATTTCTGCTGCTGCCATTAATCAAAGTATTGTGTACTCCATTGTTTCAG
GAAATGAAGAAGATACATTTGGAATTAATAACATCACAGGTGTTATCTATGTGAATGGACCTCTGGATTA
TGAGACCAGGACAAGCTATGACTTCGAGTCCAAGCTGATTCCTGGAAGTGGTCTTGGCAATCTCCGA
GTTCTTCAAAAAGCAATACAGCTAAAGTATACATTTGAGATTCAGGATGAAAATAATCATCCCCAGTGT
TTCAGAAAAAATCTACATCGGAGGTGATCTGAAGATGCAAGAATGTTTACTTCTGACTCAGAGTGAA
GGCTACTGATAAAGATACTGGCAATTATAGTGTCATGGCCTACAGACTCATAATACCACCAATTAAGAG
GGAAAAGAAGGATTTGTAGTGAACATATACAGGGCTTATCAAACCTGCTATGCTTCCATAATATGA
GGAGATCCTACTCAAGTTTCAAGTTATTGCAACTGACGACTATGGGAAGGGACTGAGCGGCAAAGCCGA
TGTAAGTCTCCTGGTCAATCAGCTGGATATGCAAGTCAATGTTTCCAATGTGCTCCTACTCTAGTG
GAAAAAAGATAGAAGATCTTACAGAGATCTTGGATCGCTATGTTTCAGGAACAAATTCCTGGTGCCAAGG
TCGTAGTGGAGTCCATTGGAGCTCGCCGGCATGGAGATGCCTTTTCCCTAGAAGATTACACCAATGTGA
CTTGACTGTCTATGCAATTGACCCCAACCAACAGAGCCATCGATAGAAATGAGCTTTTTAAATTTTTG
GATGGCAAACCTTATGATCAATAAAGACTTTTACGCCGATTATGGGGAAGGAGGACGCATTCTGGAGA
TCCGGACTCCAGAGGCAGTGACCAGCATTAAAAAGAGAGGAGAAAGTCTAGGATACACAGAAGGGCCCTT
GTTGGCTCTGGCCTTATCATCATCCTCTGCTGCATTCTGCCATCTTGGTGGTTTTGGTCAGCTACAGA
CAGTTTTAAGTACGTCAAGCTGAGTGTACAAAGACTGCACGAATTCAGGCCGATTACCCGCGCTAAAC
CAGCAGTCCCGGCTCCTGCACCAGTGGCAGCGCCCGCCGCGCCGCTCCGCCAGTGCATCT
CTATGAAGAACTTGGAGACAGCTCAATGCATAAGAATTATCCATGGAGTCTGGAATTGATCCTGGCCAGG
AATATGGACAAGATTATTACAGTTATGAGCATGGGTATGAAATGCCTCAATATGGGAGTCCCGTCGATT
GTTACCACAGCTGGACAGGAGGAATAATGGTGGTGGTGGTGAAGCTGAGGAAGAATATGAGGAGGAA
GAGGAAGAGCCAAAGAAAATTA AAAAACCAAGGTTGAAATTAGAGAGCCTAGTGAAGGAGGAAGAAG

ACGCGTACGCGGCCGCTCGAGCAGAACTCATCTCAGAAGAGGATCTGGCAGCAATGATATCCTGGATT
ACAAGGATGACGACGATAAGGTTTAA

Protein Sequence: >RC227022 representing NM_001142770
 Red=Cloning site Green=Tags(s)

MFRQFYLWTLASGIILGSLFEICLGQYDDDCKLARGGPPATIVAIDEE SRNGTILVDNMLIKGTAGGPD
 PTIELSLKDNVDYVWMLMDPVKQMLFLNSTGRVLRDPPMNIHSIVVQVCINKKVGTTIYHEVRIVVRDR
 NDNSPTFKHESYATVNELTPVGTTFITGFSGDNGATDIDDGPNQIEYVIQYNPDPTSNDTFEIPMLL
 TGNIVLRKRLNYEDKTRFYVVIQANDRAQNLNERRTTTTLTVDVLDGDDL GPMFLPCVL VPNTRDCRPL
 TYQAAIPELRTPEELNPIIVTPPIQAIDQRNIQPPSDRPGILYSILVGTPEDYPRFFHMHPRTAELSLL
 EPVNRDFHQKFDLVIKAEQDNGHPLPAFAGLHIEILDENNQSPYFTMPSYQGYILESAPVGATISDSLNL
 TSPLRIVALDKDIEDTKDPELHLFLNDYTSVFTVTQTGITRYL TLLQPVDREEQTYTFSITAFDGVQES
 EPVIVNIQVMDANDNTPTFPEISYDVVYVYDMRPGDSVIQLTAVDADEGSNGEITYEILVGAQGDFIINK
 TTGLITIAPGVEMIVGRTYALTVQAADNAPPAERRNSICTVYIEVLPNNQSPRFPQLMYSLEISEAMR
 VGAVLLNLQATDREGDSITYAIENGDPQRVFNLSETTGILTLGKALDRESTDRYIL IITASDGRPDGTST
 ATVNIVVTDVNDNAPVDFPYLPRNLSVVEEEANAFVGVKATDPDAGINGQVHYSLGNFNFLFRITSNGS
 IYTAVKLNREVRDYYELVVVATDGAHVHRHSTLTLAIKVL DIDDNSPVFTNSTYTVLVEENLPAGTTILQ
 IEAKVDVLDGANVSYRIRSPVKHFFALHPFTGELSLRSLDYEAFPDQEASITFLVEAFDIYGTMPGGIA
 TVTVIVKDMNDYPPVFSKRIYKGMVAPDAVKGTPITTVYAEDADPPGLPASRVRYRVDDVQFPYPASIFE
 VEEDSGRIVITRVNLNEEPTTIFKLVVAFDDGEPVMSSSATVKILVHPGEIPRFTQEEYRPPVSELAT
 KGTVMGVISAAAINQSIYVSIYSGNEEDTFGINNITGVIYVNGPLDYETRTSYVLRVQADSLEVLANLR
 VPSKSNTAKVYIEIQDENNHPPVFQKKFYIGGVSEDARMTSVLRVKATDKDTGNYSVMAYRLIIPPIKE
 GKEGFVVEYTYGLIKTAML FHNMRRSYFKFQVIATDDY GKL SGKADVLVSVVNQLDMQVIVSNVPTLV
 EKKIEDLTEILDRYVQE QIPGAKVVVESIGARRHGDAF SLEDYTKCDLTVY AIDPQTNRAIDRNELFKFL
 DGKLLDINKDFQPYGEGGRILEIRTPEAVTSIKKRGESLGYTEGALLALAFI IILCCIPAILVVLVSYR
 QFKV RQAECTKTARIQAALPAAKPAVPAPAPVAAPPPPPPPG AHL YEELGDSSMHKNYPWSLELILAR
 NMDKIITVMSGMKCLNMGVAVD CYHQLDRRNMVRWL VKLRKNMRRKRKSQRKLNQRLKLESLVRRKK

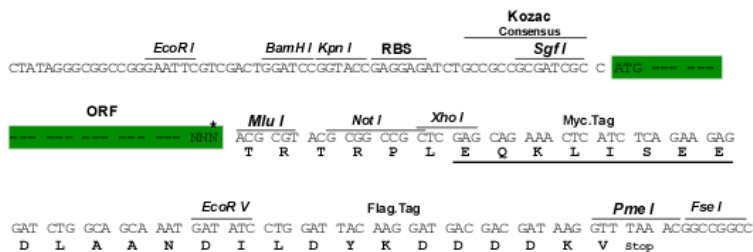
TRTRPLEQKLISEEDLAANDILDYKDDDDKV

Restriction Sites:

Sgfl-MluI

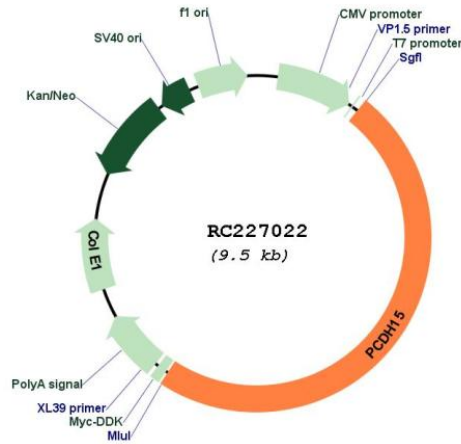
Cloning Scheme:

Cloning sites used for ORF Shuttling:



* The last codon before the Stop codon of the ORF

Plasmid Map:



ACCN: NM_001142770

ORF Size: 4617 bp

OTI Disclaimer: The molecular sequence of this clone aligns with the gene accession number as a point of reference only. However, individual transcript sequences of the same gene can differ through naturally occurring variations (e.g. polymorphisms), each with its own valid existence. This clone is substantially in agreement with the reference, but a complete review of all prevailing variants is recommended prior to use. [More info](#)

OTI Annotation: This clone was engineered to express the complete ORF with an expression tag. Expression varies depending on the nature of the gene.

Components: The ORF clone is ion-exchange column purified and shipped in a 2D barcoded Matrix tube containing 10ug of transfection-ready, dried plasmid DNA (reconstitute with 100 ul of water).

Reconstitution Method:

1. Centrifuge at 5,000xg for 5min.
2. Carefully open the tube and add 100ul of sterile water to dissolve the DNA.
3. Close the tube and incubate for 10 minutes at room temperature.
4. Briefly vortex the tube and then do a quick spin (less than 5000xg) to concentrate the liquid at the bottom.
5. Store the suspended plasmid at -20°C. The DNA is stable for at least one year from date of shipping when stored at -20°C.

RefSeq: [NM_001142770.3](#)

RefSeq ORF: 4620 bp

Locus ID: 65217

Cytogenetics: 10q21.1

Protein Families: Druggable Genome, Transmembrane

MW: 171.26 kDa

Gene Summary: This gene is a member of the cadherin superfamily. Family members encode integral membrane proteins that mediate calcium-dependent cell-cell adhesion. It plays an essential role in maintenance of normal retinal and cochlear function. Mutations in this gene result in hearing loss and Usher Syndrome Type 1F (USH1F). Extensive alternative splicing resulting in multiple isoforms has been observed in the mouse ortholog. Similar alternatively spliced transcripts are inferred to occur in human, and additional variants are likely to occur. [provided by RefSeq, Dec 2008]