

## Product datasheet for **RC227014**

### **TMEM169 (NM\_001142311) Human Tagged ORF Clone**

#### Product data:

**Product Type:** Expression Plasmids  
**Product Name:** TMEM169 (NM\_001142311) Human Tagged ORF Clone  
**Tag:** Myc-DDK  
**Symbol:** TMEM169  
**Mammalian Cell Selection:** Neomycin  
**Vector:** pCMV6-Entry (PS100001)  
**E. coli Selection:** Kanamycin (25 ug/mL)  
**ORF Nucleotide Sequence:** >RC227014 ORF sequence  
**Red=Cloning site Blue=ORF Green=Tags(s)**

TTTTGTAATACGACTCACTATAGGGCGCCGGGAATTCGTCGACTGGATCCGGTACCGAGGAGATCTGCC  
GCC**CGATCGCC**

ATGGAAGAGCCAACAGCAGTAGAAGGCCAGGTCCAGCTTCCAAGCCCCACCAGGGCTCTCTCAGGAAGG  
CTGTGGCTGTGCCCTGGCGCTGGATGGGAATCCACAATGGGGCACAGGAAAAAGAGGAAAGAGTC  
ACGCCAGAATCCATCATCATCTACCGCTCAGACAATGAGAAAACAGATGAGGAGCCCGGAGAATCAGAA  
GGTGGAGATCAGCCTAAAGAGGAGGAGGGAGATGATTTCCCTAGACTATCCTGTGGATGATGATATGTGGA  
ACCTGCCTCTGGACAGCCGCTACGTCACCTTAACTGGGACCATCACACGAGGGAAGAAAAAGGGTCAGAT  
GGTGGACATCCATGTACATTGACAGAGAAAGAGCTGCAGGAACCTGACCAAACCTAAAGAGTCATCAAGG  
GAAACGACGCCTGAAGGAAGAATGGCCTGCCAGATGGGAGCTGACCGTGGGCCCCATGTGGTCCTCTGGA  
CGCTGATCTGCCTGCCTGTGGTTTTTCATCCTTTCTTTTGTGTCTTTTCTACTACGGCACTATCACCTG  
GTACAACATCTTCTCGTGTATAATGAGGAAAGGACCTTCTGGCACAAGATCTCGTATTGCCCTTGCCTC  
GTTCTTCTATCCAGTGCTCATCATGGCCATGGCTTCTCCCTCGGCCTCTACGCTGCTGTGGTCCAGC  
TCTCGTGGTCTGGGAAGCATGGTGGCAAGCTGCCCGGACATGGAGAAAGGCTTCTGTGGCTGGCTCTG  
CAGCAAGCTGGGTCTGGAGGACTGTTCTCCCTACAGCATTGTGGAGTTGCTTGAATCCGACAATATCTCA  
AGCACTCTCTCCAACAAGGACCCATCCAAGAAGTAGAAAACCTCCACGGT

**ACGCGT**ACGCGGCCGCTCGAGCAGAAACTCATCTCAGAAGAGGATCTGGCAGCAAATGATATCCTGGATT  
ACAAGGATGACGACGATAAGGTTTAA



[View online »](#)

**Protein Sequence:** >RC227014 protein sequence  
Red=Cloning site Green=Tags(s)

MEEPTAVEGQVQLPSPHQGLRKAVAAALDGESTMGHRKKRKRKESRPESIIYRSDNEKTDEEPGESE  
GGDQPKEEEGDDFLDYPVDDDMWNLPLDSRYVTLTGTITRGKKKGQMVDIHVTLTEKELQELTKPKESSR  
ETTPEGRMACQMGAADRGPHVVLWTLICLPVVFILSFVVSFYYGTITWYNIFLVYNEERTFWHKISYCPCL  
VLFYFVLIIMASSLGLYAAVVQLSWSWEAWWQAARDMEKGF CGWLCSKLGLEDSPYSIVELLESDNIS  
STLSNKDPIQEVTSTV

TRTRPLEQKLISEEDLAANDILDYKDDDDKV

**Chromatograms:** [https://cdn.origene.com/chromatograms/mk6301\\_f11.zip](https://cdn.origene.com/chromatograms/mk6301_f11.zip)

**Restriction Sites:** SgfI-MluI

**Cloning Scheme:**

Cloning sites used for ORF Shuttling:



\* The last codon before the Stop codon of the ORF

**ACCN:** NM\_001142311

**ORF Size:** 891 bp

**OTI Disclaimer:** The molecular sequence of this clone aligns with the gene accession number as a point of reference only. However, individual transcript sequences of the same gene can differ through naturally occurring variations (e.g. polymorphisms), each with its own valid existence. This clone is substantially in agreement with the reference, but a complete review of all prevailing variants is recommended prior to use. [More info](#)

**OTI Annotation:** This clone was engineered to express the complete ORF with an expression tag. Expression varies depending on the nature of the gene.

**Components:** The ORF clone is ion-exchange column purified and shipped in a 2D barcoded Matrix tube containing 10ug of transfection-ready, dried plasmid DNA (reconstitute with 100 ul of water).

**Reconstitution Method:**

1. Centrifuge at 5,000xg for 5min.
2. Carefully open the tube and add 100ul of sterile water to dissolve the DNA.
3. Close the tube and incubate for 10 minutes at room temperature.
4. Briefly vortex the tube and then do a quick spin (less than 5000xg) to concentrate the liquid at the bottom.
5. Store the suspended plasmid at -20°C. The DNA is stable for at least one year from date of shipping when stored at -20°C.

**RefSeq:** [NM\\_001142311.2](#)

**RefSeq Size:** 3391 bp

**RefSeq ORF:** 894 bp

**Locus ID:** 92691

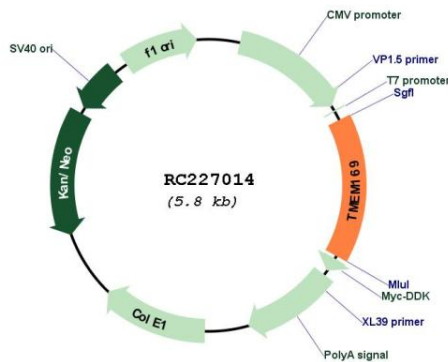
**UniProt ID:** [Q96HH4](#)

**Cytogenetics:** 2q35

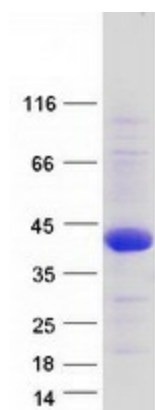
**Protein Families:** Transmembrane

**MW:** 33.6 kDa

**Product images:**



Circular map for RC227014



Coomassie blue staining of purified TMEM169 protein (Cat# [TP327014]). The protein was produced from HEK293T cells transfected with TMEM169 cDNA clone (Cat# RC227014) using MegaTran 2.0 (Cat# [TT210002]).