

Product datasheet for **RC227013**

FKBP51 (FKBP5) (NM_001145775) Human Tagged ORF Clone

Product data:

Product Type:	Expression Plasmids
Product Name:	FKBP51 (FKBP5) (NM_001145775) Human Tagged ORF Clone
Tag:	Myc-DDK
Symbol:	FKBP51
Synonyms:	AIG6; FKBP51; FKBP54; P54; PPIase; Ptg-10
Mammalian Cell Selection:	Neomycin
Vector:	pCMV6-Entry (PS100001)
E. coli Selection:	Kanamycin (25 ug/mL)



[View online »](#)

ORF Nucleotide Sequence:

>RC227013 representing NM_001145775
 Red=Cloning site Blue=ORF Green=Tags(s)

TTTTGTAATACGACTCACTATAGGGCGGCCGGAATTCGTCGACTGGATCCGGTACCGAGGAGATCTGCC
 GCC**CGCATCGCC**

ATGACTACTGATGAAGGTGCCAAGAACAATGAAGAAAGCCACAGCCACTGTTGCTGAGCAGGGAGAGG
 ATATTACCTCCAAAAAGACAGGGGAGTATTAAGATTGTCAAAAGAGTGGGGAATGGTGAGGAAACGCC
 GATGATTGGAGACAAAGTTTATGTCCATTACAAAGGAAAATTGTCAAATGGAAAGAAGTTTGATTCCAGT
 CATGATAGAAATGAACATTTGTCTTTAGTCTTGGCAAAGGCCAAGTCATCAAGGCATGGGACATTTGGG
 TGGCTACCATGAAGAAAGGAGAGATATGCCATTTACTGTGCAAACCAGAAATATGCATATGGCTCGGCTGG
 CAGTCTCCCTAAAATTCCTCGAATGCAACTCTCTTTTTGAGATTGAGCTCCTTGATTTCAAAGGAGAG
 GATTTATTTGAAGATGGAGGCATTATCCGGAGAACCAACGAAAGGAGAGGGATATTCAAATCCAAACG
 AAGGAGCAACAGTAGAAATCCACCTGGAAGGCCGCTGTGGTGAAGGATGTTTGACTGCAGAGATGTGGC
 ATTCACTGTGGGCGAAGGAGAAGACCACGACATCCAATTGGAATTGACAAAGCTCTGGAGAAAATGCAG
 CGGAAGAACAATGTATTTTATATCTTGGACCAAGATATGGTTTTGGAGAGGCAGGGAAGCCTAAATTTG
 GCATTGAACCTAATGCTGAGCTTATATATGAAGTTACACTTAAGAGCTTCGAAAAGGCCAAAGAATCCTG
 GGAGATGGATACCAAGAAAAATTTGGAGCAGGCTGCCATTGTCAAAGAGAAGGGAACCGTATACTTCAAG
 GGAGGCAATACATGCAGGCGGTGATTCAGTATGGGAAGATAGTGTCTGGTTAGAGATGGAATATGGTT
 TATCAGAAAAGGAATCGAAAGCTTCTGAATCATTTCTCCTTGCTGCCTTTCTGAACCTGGCCATGTGCTA
 CCTGAAGCTTAGAGAATACCCAAGCTGTTGAATGCTGTGACAAGGCCCTTGGACTGGACAGTGCCAAAT
 GAGAAAAGCTTGTATAGGAGGGGTGAAGCCAGCTGCTCATGAACGAGTTTGAGTCAGCCAAGGGTGACT
 TTGAGAAAAGTGTGAAGTAAACCCCAAGAATAAGGCTGCAAGACTGCAGATCTCCATGTGCCAGAAAAA
 GGCCAAGGAGCACACGAGCGGGACCGCAGGATATACGCCAACATGTTCAAGAAGTTTGAGAGCAGGAT
 GCCAAGGAAGAGGCCAATAAAGCAATGGCAAGAAGACTTCAGAAGGGGTCACTAATGAAAAAGGAACAG
 ACAGTCAAGCAATGGAAGAAGAGAAACCTGAGGGCCACGTA

ACGCGTACGCGGCCGCTCGAGCAGAACTCATCTCAGAAGAGGATCTGGCAGCAAATGATATCCTGGATT
 ACAAGGATGACGACGATAAGGTTTAA

Protein Sequence:

>RC227013 representing NM_001145775
 Red=Cloning site Green=Tags(s)

MTTDEGAKNNEESPTATVAEQGEDITSKKDRGVLIKIVKRVNGEETPMIGDKVYVHYKGLSNGKKFDSS
 HDRNEPFVFSLKGQVIKAWDIGVATMKGGEICHLLCKPEYAYGSAGSLPKIPSNATLFFEIELLDFKGE
 DLFEDGGIIRRTKRKGEYSNPNEGATVEIHLEGRCGGRMFDCRDVAFTVGEGEDHDIPIGIDKALEKMQ
 REEQCILYLGPYGFGEAGKPKFGIEPNAELIYEVTLKSF EKAKESWEMDTKEKLEQAAIVKEKGTVYFK
 GGYMQAVIQYKIVSWLEMEYGLSEKESKASESFLLAFLNLAMCYLKLREYTKAVECCDKALGLDSAN
 EKGLYRRGEAQLLMNEFESAKGDFEKVLEVNPNQNKAAARLQISMCQKKAKEHNERDRRIYANMFKKFAEQD
 AKEEANKAMGKKTSEGVNTEKGTDSQAMEEEKPEGHV

TRTRPLEQKLISEEDLAANDILDYKDDDDKV

Chromatograms:

https://cdn.origene.com/chromatograms/mg2488_e04.zip

Restriction Sites:

Sgfl-Mlul

Cloning Scheme:


ACCN: NM_001145775

ORF Size: 1371 bp

OTI Disclaimer: Due to the inherent nature of this plasmid, standard methods to replicate additional amounts of DNA in E. coli are highly likely to result in mutations and/or rearrangements. Therefore, OriGene does not guarantee the capability to replicate this plasmid DNA. Additional amounts of DNA can be purchased from OriGene with batch-specific, full-sequence verification at a reduced cost. Please contact our customer care team at custsupport@origene.com or by calling 301.340.3188 option 3 for pricing and delivery.

The molecular sequence of this clone aligns with the gene accession number as a point of reference only. However, individual transcript sequences of the same gene can differ through naturally occurring variations (e.g. polymorphisms), each with its own valid existence. This clone is substantially in agreement with the reference, but a complete review of all prevailing variants is recommended prior to use. [More info](#)

OTI Annotation: This clone was engineered to express the complete ORF with an expression tag. Expression varies depending on the nature of the gene.

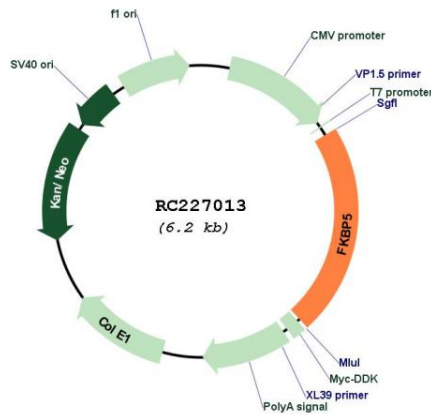
Components: The ORF clone is ion-exchange column purified and shipped in a 2D barcoded Matrix tube containing 10ug of transfection-ready, dried plasmid DNA (reconstitute with 100 ul of water).

- Reconstitution Method:**
1. Centrifuge at 5,000xg for 5min.
 2. Carefully open the tube and add 100ul of sterile water to dissolve the DNA.
 3. Close the tube and incubate for 10 minutes at room temperature.
 4. Briefly vortex the tube and then do a quick spin (less than 5000xg) to concentrate the liquid at the bottom.
 5. Store the suspended plasmid at -20°C. The DNA is stable for at least one year from date of shipping when stored at -20°C.

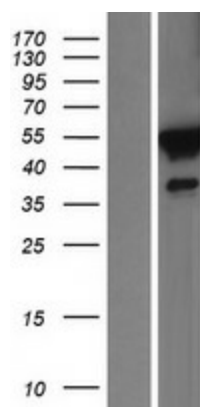
RefSeq: [NM_001145775.2](#), [NP_001139247.1](#)
RefSeq ORF: 1374 bp
Locus ID: 2289
UniProt ID: [Q13451](#)
Cytogenetics: 6p21.31
Protein Families: Druggable Genome
MW: 51 kDa

Gene Summary: The protein encoded by this gene is a member of the immunophilin protein family, which play a role in immunoregulation and basic cellular processes involving protein folding and trafficking. This encoded protein is a cis-trans prolyl isomerase that binds to the immunosuppressants FK506 and rapamycin. It is thought to mediate calcineurin inhibition. It also interacts functionally with mature hetero-oligomeric progesterone receptor complexes along with the 90 kDa heat shock protein and P23 protein. This gene has been found to have multiple polyadenylation sites. Alternative splicing results in multiple transcript variants. [provided by RefSeq, Mar 2009]

Product images:



Circular map for RC227013



Western blot validation of overexpression lysate (Cat# [LY429003]) using anti-DDK antibody (Cat# [TA50011-100]). Left: Cell lysates from untransfected HEK293T cells; Right: Cell lysates from HEK293T cells transfected with [RC227040] using transfection reagent MegaTran 2.0 (Cat# [TT210002]).